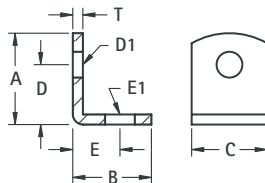
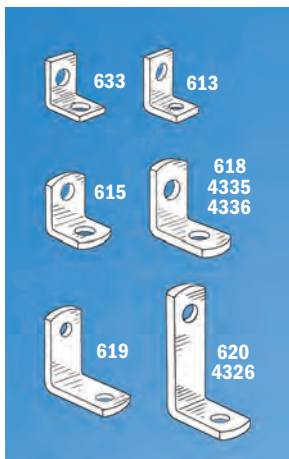


UNIVERSAL CLEAR HOLE BRACKETS



CAT. NO.	A	B	C	D	D HOLE DIAMETER	E	E HOLE DIAMETER	T	MATERIAL	FINISH
633	.375 (9.5)	.375 (9.5)	.281 (7.1)	.218 (5.5)	.140 (3.6)	.218 (5.5)	.140 (3.6)	.032 (.81)	Brass	Nickel
613	.390 (9.9)	.453 (11.5)	.375 (9.5)	.234 (5.9)	.147 (3.7)	.299 (7.6)	.128 (3.3)	.032 (.81)	Brass	Nickel
615	.420 (10.7)	.343 (8.7)	.281 (7.1)	.281 (7.1)	.144 (3.7)	.203 (5.2)	.128 (3.3)	.032 (.81)	Brass	Tin
4335	.562 (14.3)	.562 (14.3)	.500 (12.7)	.412 (10.5)	.120 (3.0)	.411 (10.4)	.120 (3.0)	.062 (1.57)	Steel	Nickel
4336	.562 (14.3)	.562 (14.3)	.500 (12.7)	.412 (10.5)	.144 (3.7)	.412 (10.5)	.144 (3.7)	.062 (1.57)	Steel	Nickel
618	.628 (16.0)	.628 (16.0)	.375 (9.5)	.378 (9.6)	.169 (4.3)	.378 (9.6)	.169 (4.3)	.050 (1.27)	Brass	Tin
619	.687 (17.4)	.687 (17.4)	.375 (9.5)	.500 (12.7)	.144 (3.7)	.500 (12.7)	.144 (3.7)	.032 (.81)	Steel	Tin
4326	1.013 (25.7)	.487 (12.4)	.312 (7.9)	.816 (20.7)	.140 (3.6)	.332 (8.4)	.140 (3.6)	.050 (1.27)	Steel	Nickel
620	1.156 (29.4)	.656 (16.7)	.375 (9.5)	.906 (23.0)	.169 (4.3)	.420 (10.7)	.169 (4.3)	.032 (.81)	Steel	Tin

BOARD BRACKETS

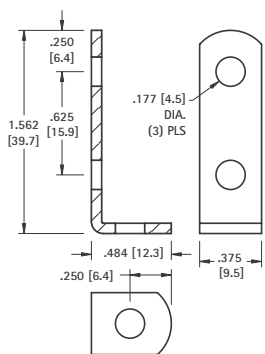
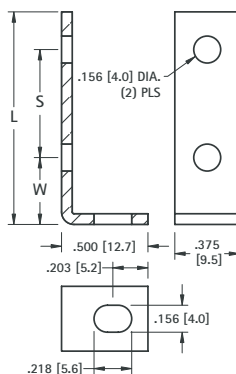
Originally designed for our line of standardized terminal boards; these brackets can also be used in other applications.

Choice of Steel or Aluminum

MATERIALS:

.062 (1.57) thick Steel, Nickel Plate
.062 (1.57) thick Aluminum

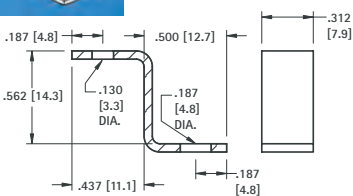
STEEL CAT. NO.	ALUMINUM CAT. NO.	W	L	S	For Use With Board No.'s (Refer to page 130)		
1556	622	.375 (9.5)	1.625 (41.3)	1.000 (25.4)	15032	15072	15092
1567	623	.375 (9.5)	2.125 (54.0)	1.500 (38.1)	15033	15073	15093
1568	624	.375 (9.5)	2.625 (66.7)	2.000 (50.8)	15034	15074	15094
1569	625	.375 (9.5)	3.125 (79.4)	2.500 (63.5)	15035	15075	15095
1570	626	.281 (7.1)	1.187 (30.1)	.750 (19.1)	15022	15024	15030
1571	627	.281 (7.1)	1.625 (41.3)	1.187 (30.1)	15036	15076	15096



CAT. NO. 1564

MATERIAL:

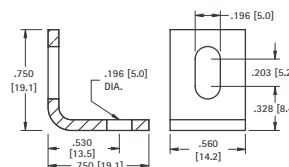
.062 (1.57) thick Steel, Nickel Plate



CAT. NO. 4325

MATERIAL:

.050 (1.27) thick Steel, Nickel Plate



CAT. NO. 4337

MATERIAL:

.080 (2.03) thick Aluminum

THREADED PC MOUNT BRACKETS

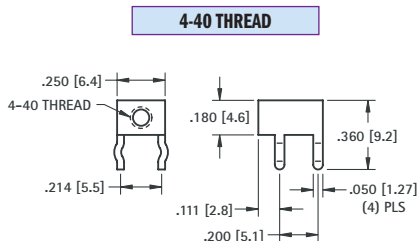
- Snaps in for wave soldering
- Reduces assembly time
- Easily mount into predrilled or punched holes
- Stable no rock design



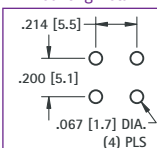
SNAP-IN PC MOUNT



For screw selection refer to pages 79 and 123



Mounting Detail

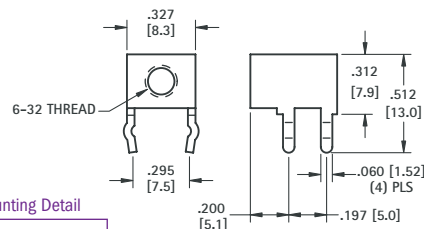


MATERIAL:

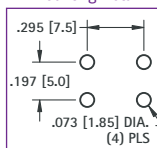
.032 (.81) thick Brass, Tin Plate

CAT. NO. 7774

6-32 THREAD



Mounting Detail



MATERIAL:

.032 (.81) thick Brass, Tin Plate

CAT. NO. 7779

AMEYA360

Components Supply Platform

Authorized Distribution Brand :



Website :

Welcome to visit www.ameya360.com

Contact Us :

➤ Address :

401 Building No.5, JiuGe Business Center, Lane 2301, Yishan Rd
Minhang District, Shanghai , China

➤ Sales :

Direct +86 (21) 6401-6692

Email amall@ameya360.com

QQ 800077892

Skype [ameyasales1](#) [ameyasales2](#)

➤ Customer Service :

Email service@ameya360.com

➤ Partnership :

Tel +86 (21) 64016692-8333

Email mkt@ameya360.com