



Micro Commercial Components



Micro Commercial Components  
20736 Marilla Street Chatsworth  
CA 91311

Phone: (818) 701-4933

Fax: (818) 701-4939

# MMBD4448HAQW/ ADW/CDW/SDW/ CQW/TW

## Features

- Fast Switching Speed
- For General Purpose Switching Applications
- High Conductance, Power Dissipation
- Ultra-Small Surface Mount Package
- Epoxy meets UL 94 V-0 flammability rating
- Moisture Sensitivity Level 1
- Lead Free Finish/Rohs Compliant ("P" Suffix designates RoHS Compliant. See ordering information)
- Halogen free available upon request by adding suffix "-HF"

## Maximum Ratings

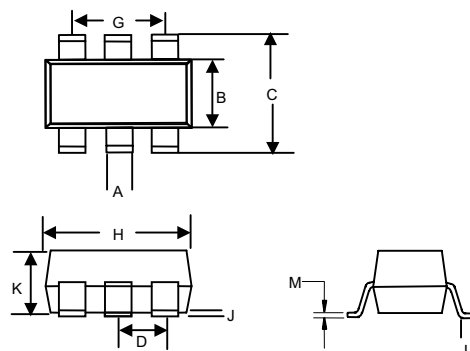
| Symbol          | Rating                                   | Rating      | Unit          |
|-----------------|--|-------------|---------------|
| $V_{RM}$        | Non-Repetitive Peak Reverse Voltage      | 100         | V             |
| $V_{RRM}$       | Peak Repetitive Reverse Voltage          | 80          | V             |
| $V_{RWM}$       | Working Peak Reverse Voltage             |             |               |
| $V_R$           | DC Blocking Voltage                      |             |               |
| $V_{R(RMS)}$    | RMS Reverse Voltage                      | 57          | V             |
| $I_{FM}$        | Forward Continuous Current               | 500         | mA            |
| $I_O$           | Average Rectified Output Current         | 250         | mA            |
| $I_{FSM}$       | Peak Forward Surge Current @ 1.0 $\mu$ s | 4.0         | A             |
|                 |  | @ 1.0s      |               |
| $R_{\theta JA}$ | Thermal Resistance Junction to Ambient   | 625         | $^{\circ}C/W$ |
| $P_D$           | Power dissipation                        | 200         | mW            |
| $T_J$           | Junction Temperature                     | 150         | $^{\circ}C$   |
| $T_{STG}$       | Storage Temperature                      | -65 to +150 | $^{\circ}C$   |

## Electrical Characteristics @ 25 $^{\circ}C$ Unless Otherwise Specified

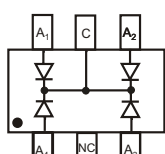
| Symbol     | Parameter                       | Min  | Max        | Test Conditions             |
|------------|---------------------------------|------|------------|-----------------------------|
| $V_{(BR)}$ | Reverse Breakdown Voltage       | 80V  | ---        | $I_R=100 \mu A$             |
| $I_R$      | Reverse Voltage Leakage Current | ---  | 100nA      | $V_R=70V$                   |
|            |                                 |      | 50 $\mu A$ | $V_R=75V, T_J=150^{\circ}C$ |
|            |                                 |      | 30 $\mu A$ | $V_R=25V, T_J=150^{\circ}C$ |
|            |                                 |      | 25nA       | $V_R=20V$                   |
| $V_F$      | Forward Voltage                 | 0.62 | 0.72V      | $I_F=5.0mA$                 |
|            |                                 | ---  | 0.855V     | $I_F=10mA$                  |
|            |                                 | ---  | 1.0V       | $I_F=50mA$                  |
|            |                                 | ---  | 1.25V      | $I_F=150mA$                 |
| $C_T$      | Total Capacitance               | ---  | 3.5pF      | $V_R=6V, f=1MHz$            |
| $t_{rr}$   | Reverse Recovery Time           | ---  | 4.0ns      | $I_F=5mA, V_R=6V$           |

## 200mW Switching Diodes

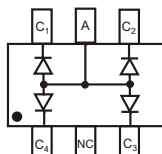
## SOT-363



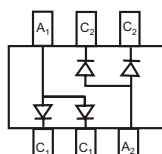
| DIM | INCHES |      | MM          |      | NOTE |
|-----|--------|------|-------------|------|------|
|     | MIN    | MAX  | MIN         | MAX  |      |
| A   | .006   | .014 | 0.15        | 0.35 |      |
| B   | .045   | .053 | 1.15        | 1.35 |      |
| C   | .085   | .096 | 2.15        | 2.45 |      |
| D   | .026   |      | 0.65Nominal |      |      |
| G   | .047   | .055 | 1.20        | 1.40 |      |
| H   | .071   | .087 | 1.80        | 2.20 |      |
| J   | ---    | .004 | ---         | 0.10 |      |
| K   | .035   | .043 | 0.90        | 1.10 |      |
| L   | .010   | .018 | 0.26        | 0.46 |      |
| M   | .003   | .006 | 0.08        | 0.15 |      |



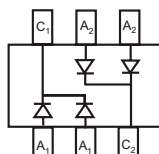
Marking: KA4  
MMBD4448HCQW



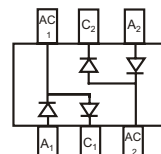
Marking: KA5  
MMBD4448HAQW



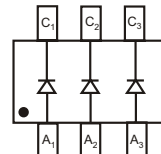
Marking: KA6  
MMBD4448HADW



Marking: KA7  
MMBD4448HCDW



Marking: KAB  
MMBD4448HSDW



Marking: KAA  
MMBD4448HTW

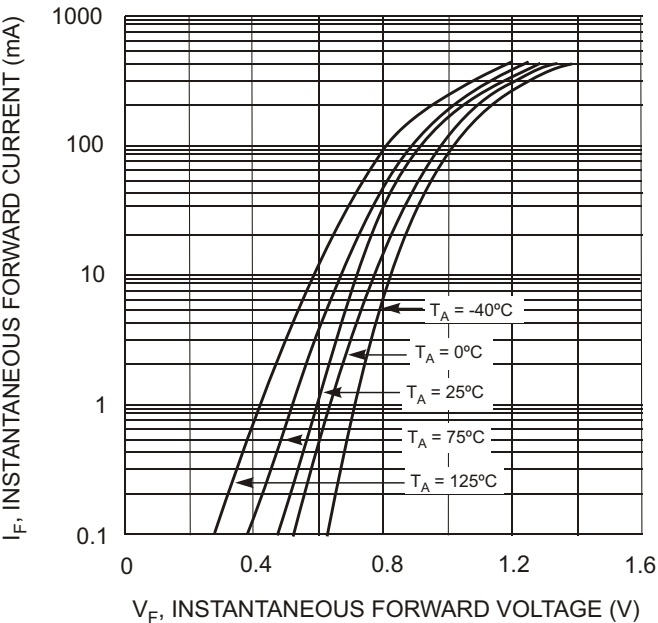


Fig. 1 Typical Forward Characteristics

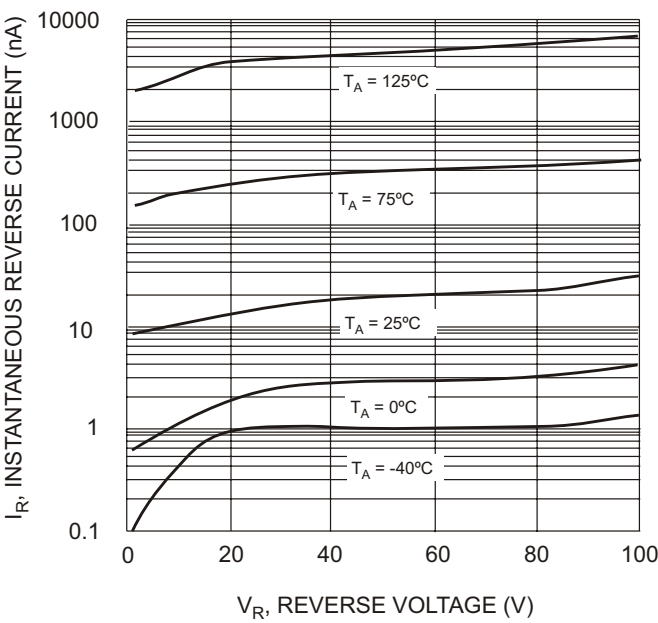


Fig. 2 Typical Reverse Characteristics

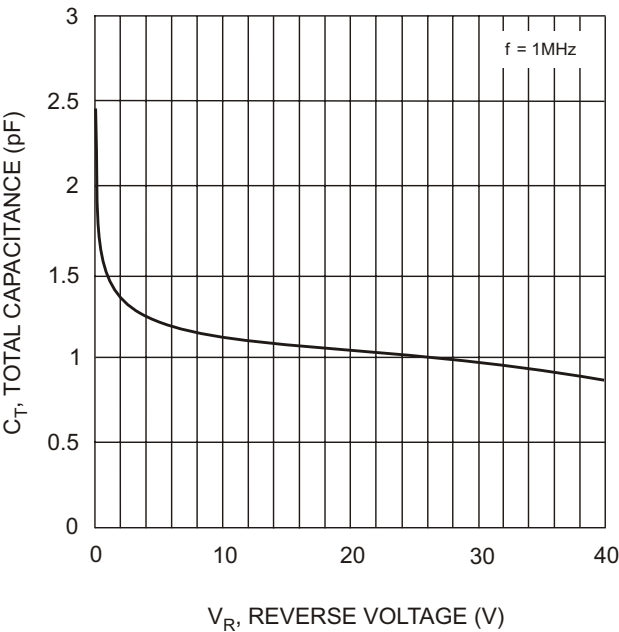


Fig. 3 Typical Capacitance vs. Reverse Voltage

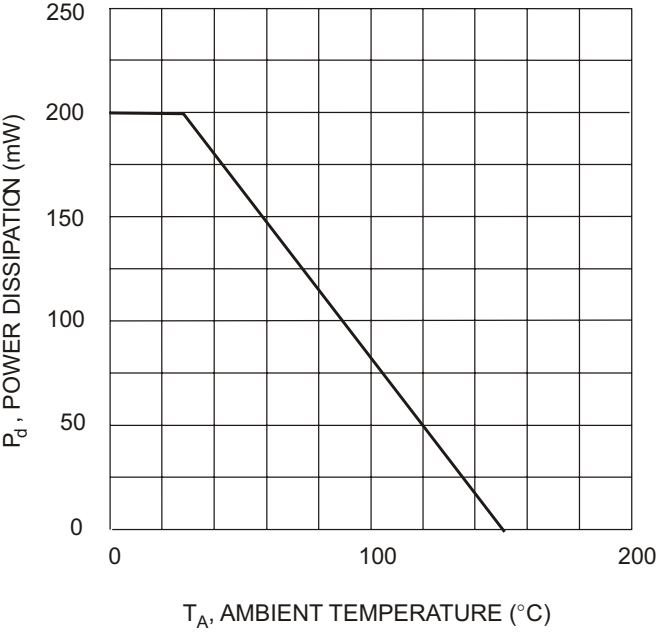
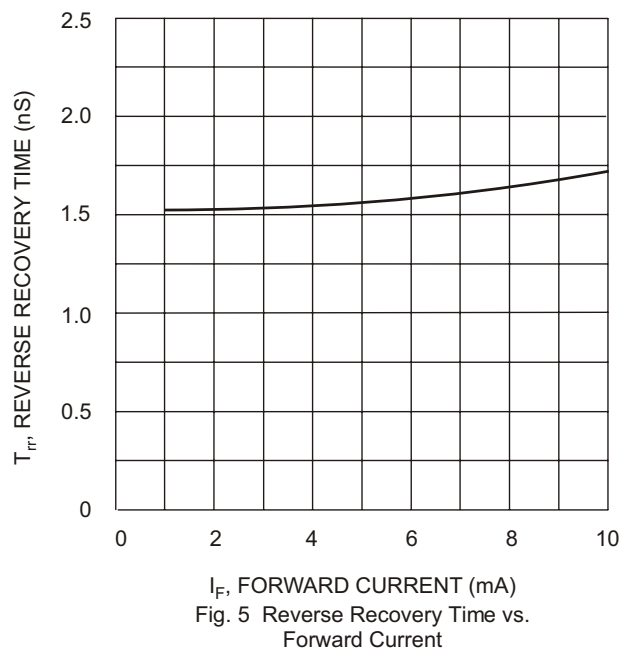


Fig. 4 Power Derating Curve, Total Package





TM

Micro Commercial Components

**Ordering Information :**

| Device         | Packing               |
|----------------|-----------------------|
| Part Number-TP | Tape&Reel: 3Kpcs/Reel |

Note : Adding "-HF" suffix for halogen free, eg. Part Number-TP-HF

**\*\*\*IMPORTANT NOTICE\*\*\***

**Micro Commercial Components Corp.** reserves the right to make changes without further notice to any product herein to make corrections, modifications , enhancements , improvements , or other changes . **Micro Commercial Components Corp .** does not assume any liability arising out of the application or use of any product described herein; neither does it convey any license under its patent rights ,nor the rights of others . The user of products in such applications shall assume all risks of such use and will agree to hold **Micro Commercial Components Corp .** and all the companies whose products are represented on our website, harmless against all damages.

**\*\*\*LIFE SUPPORT\*\*\***

MCC's products are not authorized for use as critical components in life support devices or systems without the express written approval of Micro Commercial Components Corporation.

**\*\*\*CUSTOMER AWARENESS\*\*\***

Counterfeiting of semiconductor parts is a growing problem in the industry. Micro Commercial Components (MCC) is taking strong measures to protect ourselves and our customers from the proliferation of counterfeit parts. MCC strongly encourages customers to purchase MCC parts either directly from MCC or from Authorized MCC Distributors who are listed by country on our web page cited below. Products customers buy either from MCC directly or from Authorized MCC Distributors are genuine parts, have full traceability, meet MCC's quality standards for handling and storage. **MCC will not provide any warranty coverage or other assistance for parts bought from Unauthorized Sources.** MCC is committed to combat this global problem and encourage our customers to do their part in stopping this practice by buying direct or from authorized distributors.

---

**[www.mccsemi.com](http://www.mccsemi.com)**

---

# AMEYA360

## Components Supply Platform

Authorized Distribution Brand :



Website :

Welcome to visit [www.ameya360.com](http://www.ameya360.com)

Contact Us :

➤ Address :

401 Building No.5, JiuGe Business Center, Lane 2301, Yishan Rd  
Minhang District, Shanghai , China

➤ Sales :

Direct +86 (21) 6401-6692

Email [amall@ameya360.com](mailto:amall@ameya360.com)

QQ 800077892

Skype ameyasales1 ameyasales2

➤ Customer Service :

Email [service@ameya360.com](mailto:service@ameya360.com)

➤ Partnership :

Tel +86 (21) 64016692-8333

Email [mkt@ameya360.com](mailto:mkt@ameya360.com)