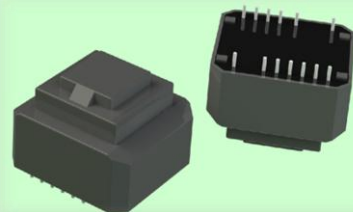


Power Supplies with Ultra-low Standby Power Consumption/Energy-saving Power Modules EPM Series

Features

1. Easy creation of switching power supplies by use of simple external parts
2. Significant power consumption reduction under light-load and no-load conditions
3. Support of worldwide input and PFC output voltage (DC110V to 450V)
4. Significant reduction of beat note under light-load condition by use of resin filling

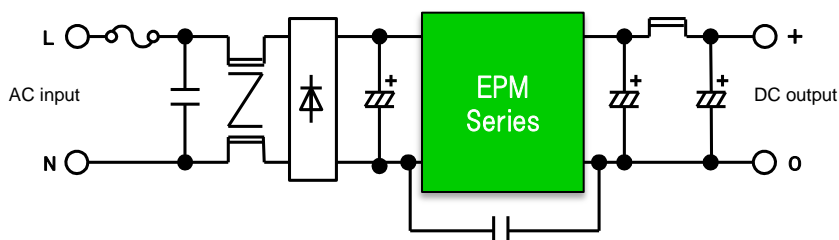


Applications

- Industrial equipment
- Information processing equipment
- AV equipment
- Home electric appliances
- Other standby power supplies and compact power supplies

Application circuit

Method to select external parts for input rectification and smoothing as well as output smoothing is supported by the application note.



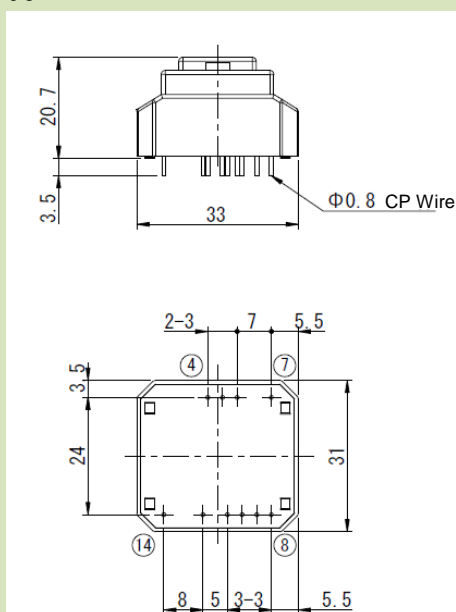
Product Lineup

Part No	Output voltage	Rated load	Output tolerance	External Type	RoHS compliant	Data sheet	Insulation (Between Pri-Sec)	Status
EPM0310SJ	3.3V	1A	±5%	FE19S	OK		Reinforced insulation	sample
EPM0510SJ	5V	1A		FE19S	OK	Check Official Site	Reinforced insulation	mass production
EPM1205SJ	12V	0.5A		FE19S	OK		Reinforced insulation	sample
EPM1210SJ		1A		FE22S	OK		Reinforced insulation	sample
EPM1505SJ	15V	0.5A		FE19S	OK		Reinforced insulation	sample
EPM1510SJ		1A		FE22S	OK	Check Official Site	Reinforced insulation	mass production
EPM2403SJ	24V	0.25A		FE19S	OK		Reinforced insulation	sample
EPM2405SJ		0.5A		FE22S	OK		Reinforced insulation	sample
EPM1205SK	12V	0.5A	±10%	FE19S	OK	Check Official Site	Reinforced insulation	mass production
EPM1210SK		1A		FE22S	OK	Check Official Site	Reinforced insulation	mass production
EPM1505SK	15V	0.5A		FE19S	OK		Reinforced insulation	sample
EPM1510SK		1A		FE22S	OK		Reinforced insulation	sample
EPM2403SK	24V	0.25A		FE19S	OK		Reinforced insulation	sample
EPM2405SK		0.5A		FE22S	OK		Reinforced insulation	sample

※Multi-output products are also under development.

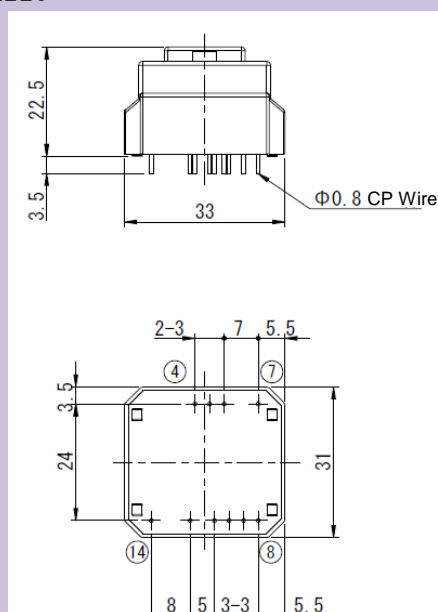
External dimensions

FE19S



Unit: mm

FE22S



Unit: mm

* Dimensions shown above are all standard values.

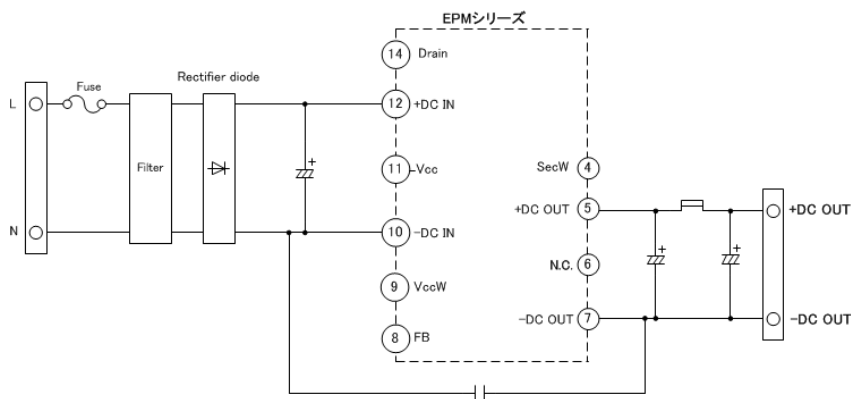
Pin assignment

Primary side

Pin No.	Name	Description
8	FB	N.C. (unable to connect to other circuits)
9	VccW	N.C. (unable to connect to other circuits)
10	-DCIN	Input (-)
11	Vcc	Start-up time adjustment
12	+DCIN	Input (+)
13		No pin

Secondary side

Pin No.	Name	Description
1		No pin
2		No pin
3		No pin
4	SecW	N.C. (unable to connect to other circuits)
5	+DCOUT	Output (+)
6	N.C.	N.C. (unable to connect to other circuits)
7	-DCOUT	Output (-)



* The contents of this document may change without prior notice. Please ensure that the information is up to date.

When you use the products described in this document, please make sure to obtain the delivery specifications and secure safety by yourself, because there are limits to their application and the environment where they can be used.

AMEYA360

Components Supply Platform

Authorized Distribution Brand :



Website :

Welcome to visit www.ameya360.com

Contact Us :

➤ Address :

401 Building No.5, JiuGe Business Center, Lane 2301, Yishan Rd
Minhang District, Shanghai , China

➤ Sales :

Direct +86 (21) 6401-6692

Email amall@ameya360.com

QQ 800077892

Skype ameyasales1 ameyasales2

➤ Customer Service :

Email service@ameya360.com

➤ Partnership :

Tel +86 (21) 64016692-8333

Email mkt@ameya360.com