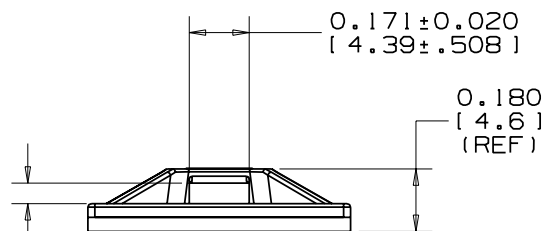
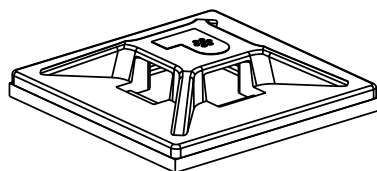
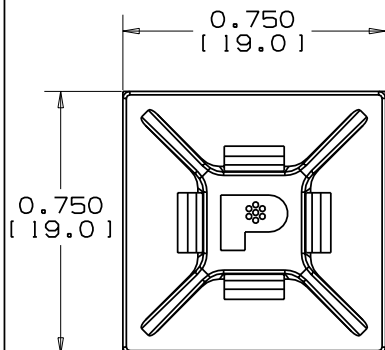


NO WARRANTY, EXPRESSED OR IMPLIED, IS MADE BY PANDUIT WITH RESPECT TO ADHESIVE BOND PERFORMANCE. AMONG OTHER THINGS, THE CONDITIONS UNDER WHICH THESE MOUNTS MAY BE APPLIED AND/OR THE SURFACE TO WHICH THEY MAY BE APPLIED ARE BEYOND PANDUIT'S CONTROL.


$$0.065 \pm .010$$

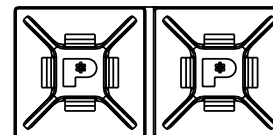
$$[1.57 \pm .254]$$

PRESSURE SENSITIVE TAPE 0.040(1.0)
THICK WITH PROTECTIVE LINER. MOUNT
IS DESIGNED TO SUPPORT 0.30 lbs(136 g)
MAX. WEIGHT ON A CLEAN, DRY, SMOOTH,
GREASE-FREE SURFACE.

PANDUIT PART NO. *	USE WITH THESE CABLE TIE CROSS SECTIONS	WEIGHT lbs (g)/100 pcs
ABMM-AT	MINIATURE INTERMEDIATE	0.113 (51.3)

- 1) CLEAN SURFACE WITH ISOPROPYL ALCOHOL.
- 2) REMOVE PROTECTIVE LINER.
- 3) PLACE IN DESIRED LOCATION.
- 4) APPLY PRESSURE TO MOUNT FOR 5 SECONDS.

- * 1) SEE CURRENT PRICE SHEET FOR PART NUMBER SUFFIX DESIGNATION FOR PACKAGE SIZE AND PART COLOR.
- 2) MOUNTS ARE SUPPLIED IN STRIPS OF TWO FOR EASY REMOVAL OF LINER.
- 3) MOUNT HAS A CONTINUOUS OPERATING TEMPERATURE OF 180°F(82°C).



ACTUAL SIZE

(DIMENSIONS IN PARENTHESES ARE IN METRIC.)

CAD FILENAME/LAYERS

G00239ER_DC_ABMM_AT_08



CORP.

TINLEY PARK, ILLINOIS

ABMM - AT
ADHESIVE BACKED MOUNT

UNLESS OTHERWISE SPECIFIED,
DIMENSIONAL TOLERANCES ARE:
(.X) ± .--- (.XXX) ± .020(.5)
(.XX) ± .02(.5) ANGLES ± .---

UNLESS OTHERWISE SPECIFIED,
ALL DIMENSIONS ARE GIVEN
IN INCHES, THIRD ANGLE PROJECTION.

DRAWN BY
AJV

MAT'L:

SCALE	NONE
-------	------

DATE	12-23-96
------	----------

ABS
(ACRYLONITRILE BUTADIENE STYRENE)

DRAWING NO.

GB0239ER

DWG
A
SIZE

8	6/29/06	JAD		REMOVE ABM20B	GB0239ER	8				
REV	DATE	BY	CHK	DESCRIPTION	ECN	-	R	CUST	SUP	

AMEYA360

Components Supply Platform

Authorized Distribution Brand :



Website :

Welcome to visit www.ameya360.com

Contact Us :

➤ Address :

401 Building No.5, JiuGe Business Center, Lane 2301, Yishan Rd
Minhang District, Shanghai , China

➤ Sales :

Direct +86 (21) 6401-6692
Email amall@ameya360.com
QQ 800077892
Skype ameyasales1 ameyasales2

➤ Customer Service :

Email service@ameya360.com

➤ Partnership :

Tel +86 (21) 64016692-8333
Email mkt@ameya360.com