

CUSTOMER TERMINAL	RoHS	LEAD(Pb)-FREE
Sn96%, Ag4%	Yes	Yes

more than you expect



ELECTRICAL SPECIFICATIONS @ 25°C unless otherwise noted:

PARAMETER	TEST CONDITIONS	VALUE
D.C. RESISTANCE	1-3 @20°C	0.436 ohms max.
D.C. RESISTANCE	6-4 @20°C	0.581 ohms max.
INDUCTANCE	1-3 100kHz, 10mVAC, Ls	340uH min.
DIELECTRIC	1-6 6250Vrms, 1 second	5000Vrms, 1 minute
URNS RATIO	(6-4):(1-3)	2:1, ±2%

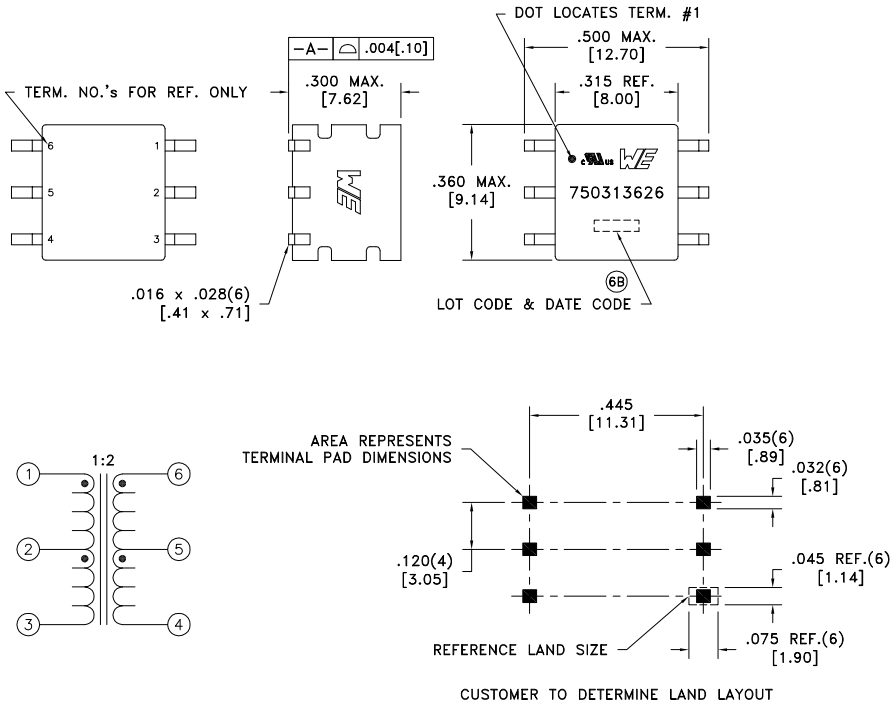
GENERAL SPECIFICATIONS:
OPERATING TEMPERATURE RANGE: -40°C to +125°C including temp rise.

CURRENT RATING: 150mAAC

VOLTAGE-TIME: 11VuS

- Complies with the following requirements as defined by IEC60601-1(ed); am1:
 - Providing two means of Patient Protection up to a working voltage of 250VAC.
- 8mm minimum creepage & clearance distance between PRI & SEC.
- Complies with the following requirements as defined by IEC60950-1, EN60950-1, UL60950-1/CSA-60950-1 and AS/NZS60950-1:
 - Reinforced insulation for a primary circuit at a working voltage of 250VAC, Overvoltage Category II, Pollution Degree 2, up to 2km above sea level.
- Designed to comply with the following requirements as defined by IEC60664-1:
 - Reinforced insulation for a primary circuit at a working voltage of 400VAC up to 2km above sea level.

COPLANARITY: All 6 terminals must lie on a plane within .004 [.10] of Surface A after lead tinning.



Wire insulation & RoHS status not affected by wire color.
Wire insulation color may vary depending on availability.

AGENCY NUMBER	
UL60950-1	E205930
UL60601-1	E358628

REV.	DATE	Packaging Specifications	CONVENTION PLACEMENT	Tolerances unless otherwise specified: Angles: ±1° Fractions: ±1/64 Decimals: ±.005 [.13] Footprint: ±.005 [.13]	DRAWING TITLE TRANSFORMER	PART NO. 750313626
6C	3/15	Method: Tape & Reel PKG-0948 www.we-online.com/midcom				
6B	1/15					
6A	10/13	SEE REVISION SHEET FOR REVISION LEVEL		This drawing is dual dimensioned. Dimensions in brackets are in millimeters.	eiSos p/n: 750313626	SPECIFICATION SHEET 1 OF 1



AMEYA360

Components Supply Platform

Authorized Distribution Brand :



Website :

Welcome to visit www.ameya360.com

Contact Us :

➤ Address :

401 Building No.5, JiuGe Business Center, Lane 2301, Yishan Rd
Minhang District, Shanghai , China

➤ Sales :

Direct +86 (21) 6401-6692

Email amall@ameya360.com

QQ 800077892

Skype ameyasales1 ameyasales2

➤ Customer Service :

Email service@ameya360.com

➤ Partnership :

Tel +86 (21) 64016692-8333

Email mkt@ameya360.com