

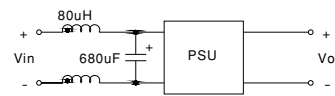


#### ■ Features :

- Wide 4:1 DC input range
- Protections: Short circuit / Overload / Over voltage
- 1500VDC I/O isolation
- Built-in EMI filter
- Cooling by free air convection
- Output voltage trimming function
- Built-in remote ON-OFF control
- 100% full load burn-in test
- Low cost
- High reliability
- 2 years warranty

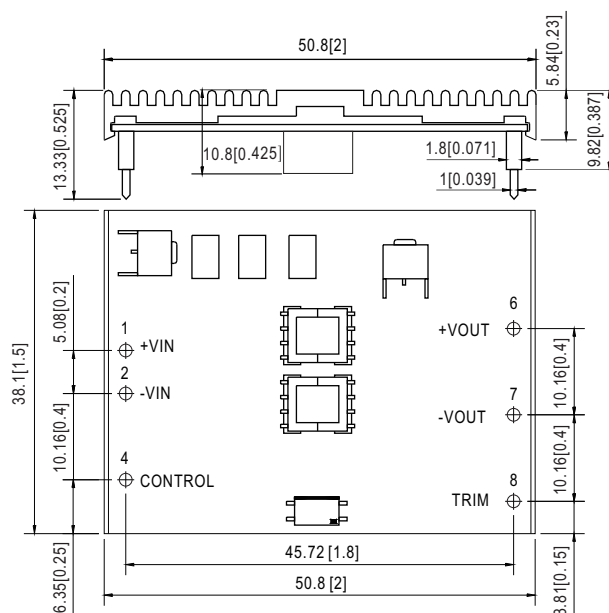


#### SPECIFICATION

| MODEL                    |   | NSD15-12S3  | NSD15-12S5 | NSD15-12S12  | NSD15-12S15   | NSD15-48S3               | NSD15-48S5 | NSD15-48S12  | NSD15-48S15   |
|--------------------------|---|---|------------|--------------|---------------|--------------------------|------------|--------------|---------------|
| OUTPUT                   | DC VOLTAGE  | 3.3V  | 5V         | 12V          | 15V           | 3.3V                     | 5V         | 12V          | 15V           |
|                          | RATED CURRENT   | 3.75A   | 3A         | 1.25A        | 1A            | 3.75A                    | 3A         | 1.25A        | 1A            |
|                          | CURRENT RANGE   | 0.18 ~ 3.75A  | 0.15 ~ 3A  | 0.06 ~ 1.25A | 0.05 ~ 1A     | 0.18 ~ 3.75A             | 0.15 ~ 3A  | 0.06 ~ 1.25A | 0.05 ~ 1A     |
|                          | RATED POWER   | 12.375W   | 15W        | 15W          | 15W           | 12.375W                  | 15W        | 15W          | 15W           |
|                          | CAPACITIVE LOAD (max.)  | 3300uF  |            |              |               |                          |            |              |               |
|                          | RIPPLE & NOISE (max.) <small>Note.2</small>   | 100mVp-p(25% ~ 100% load) for 3.3V only   |            |              |               | 75mVp-p(25% ~ 100% load) |            |              |               |
|                          | VOLTAGE TOLERANCE <small>Note.3</small>   | ±2.0%   |            |              |               |                          |            |              |               |
|                          | LINE REGULATION   | ±1.0% at 10% ~ 100% load  |            |              |               |                          |            |              |               |
|                          | LOAD REGULATION   | ±1.0% at 10% ~ 100% load  |            |              |               |                          |            |              |               |
|                          | TRIM OUTPUT (Typ.)  | +10%  | ±5.0%      | ±5.0%        | ±3.0%         | +10%                     | ±5.0%      | ±5.0%        | ±3.0%         |
| SETUP TIME               | 100ms/RATED DC INPUT at full Load   |   |            |              |               |                          |            |              |               |
| INPUT                    | RATED DC INPUT  | 12VDC   |            |              |               | 48VDC                    |            |              |               |
|                          | VOLTAGE RANGE   | 9.4 ~ 36VDC   |            |              |               | 18 ~ 72VDC               |            |              |               |
|                          | EFFICIENCY (Typ.)   | 73%   | 77%        | 81%          | 81%           | 77%                      | 81%        | 84%          | 85%           |
|                          | DC CURRENT  | 1.8A/12VDC  |            |              |               | 0.4A/48VDC               |            |              |               |
|                          | SHUTDOWN IDLE CURRENT   | 20mA  |            |              |               |                          |            |              |               |
| PROTECTION               | OVERLOAD  | Above 105% rated output power<br>Protection type : Over power limiting, recovers automatically after fault condition is removed |            |              |               |                          |            |              |               |
|                          | OVER VOLTAGE(CLAMP)   | 5.8 ~ 6.93V   | 5.8 ~ 7.5V | 13.8 ~ 18V   | 17.25 ~ 22.5V | 5.61 ~ 6.93V             | 5.5 ~ 7.5V | 13.8 ~ 18V   | 17.25 ~ 22.5V |
|                          | SHORT CIRCUIT <small>Note.4</small>   | Recovers automatically after fault condition is removed   |            |              |               |                          |            |              |               |
| FUNCTION                 | ON/OFF CONTROL  | Logic "1" or open circuit : ON      Logic "0" or short to PIN2 : OFF  |            |              |               |                          |            |              |               |
| ENVIRONMENT              | WORKING TEMP.   | -25 ~ +70℃  |            |              |               |                          |            |              |               |
|                          | WORKING HUMIDITY  | 0% ~ 95% RH max.  |            |              |               |                          |            |              |               |
|                          | STORAGE TEMP., HUMIDITY   | -40 ~ +85℃, 0 ~ 95% RH  |            |              |               |                          |            |              |               |
|                          | TEMP. COEFFICIENT   | ±0.03%/℃ (0~50℃)  |            |              |               |                          |            |              |               |
| SAFETY & EMC<br>(Note 5) | SAFETY STANDARDS  | UL60950-1 approved, Design refer to TUV EN60950-1   |            |              |               |                          |            |              |               |
|                          | ISOLATION VOLTAGE   | I/P-O/P:1.5KVDC   |            |              |               |                          |            |              |               |
|                          | ISOLATION RESISTANCE  | I/P-O/P:100M Ohms / 500VDC / 25℃/ 70% RH  |            |              |               |                          |            |              |               |
|                          | EMC EMISSION  | Compliance to EN55022 (CISPR22) Class B   |            |              |               |                          |            |              |               |
|                          | EMC IMMUNITY  | Compliance to EN61000-4-2,3,4,6,8; EN55024, light industry level, criteria A  |            |              |               |                          |            |              |               |
| OTHERS                   | MTBF  | 1734K hrs min.    MIL-HDBK-217F (25℃)   |            |              |               |                          |            |              |               |
|                          | DIMENSION   | 50.8*38.1*9.82mm (2**1.5**0.387") (L*W*H)   |            |              |               |                          |            |              |               |
|                          | PACKING   | 0.03Kg; 180pcs/6.4Kg/0.97CUFT   |            |              |               |                          |            |              |               |
| NOTE                     | <div>1. All parameters NOT specially mentioned are measured at 12, 48VDC input, rated load and 25℃ of ambient temperature.</div> <div>2. Ripple &amp; noise are measured at 20MHz of bandwidth by using a 12" twisted pair-wire terminated with a 0.1uf &amp; 47uf parallel capacitor.</div> <div>3. Tolerance : includes set up tolerance, line regulation and load regulation.</div> <div>4. Short circuit no more than 60 seconds.</div> <div>5. The power supply is considered a component which will be installed into a final equipment. The final equipment must be re-confirmed that it still meets EMC directives. For guidance on how to perform these EMC tests, please refer to "EMI testing of component power supplies."<br/>(as available on <a href="http://www.meanwell.com">http://www.meanwell.com</a>)</div> <div>6. Derating to 80% load is needed for NSD15-48S series at 18Vdc input voltage. Full output wattage can be acquired when the input voltage is higher than 20Vdc.</div> <div>7. EMC filter suggestion:</div> <div></div> |   |            |              |               |                          |            |              |               |

## ■ Mechanical Specification

Unit:mm[inch]

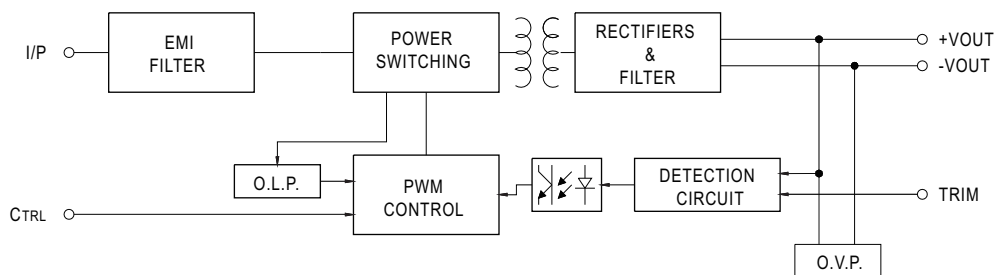


### Pin No. Assignment

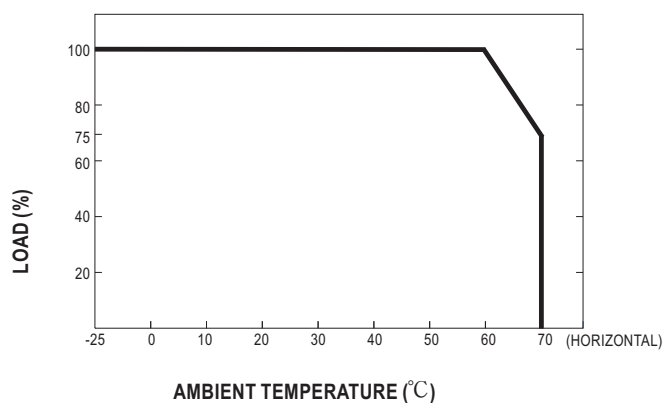
| Pin No. | Assignment | Pin No. | Assignment |
|---------|------------|---------|------------|
| 1       | +VIN       | 6       | +VOUT      |
| 2       | -VIN       | 7       | -VOUT      |
| 3,5     | No Pin     | 8       | TRIM       |
| 4       | CONTROL    |         |            |

### ■ Block Diagram

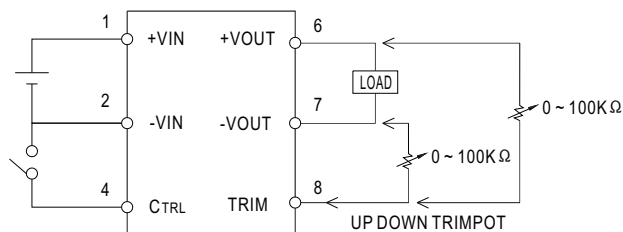
fosc : 400KHz



### Derating Curve



## ■ ON/OFF Control & Output Trim



CONTROL INPUT.....PIN4  
CONTROL COMMON.....PIN2  
LOGIC COMPATIBILITY.....CMOS OR OPEN COLLECTOR TTL  
CONTROL VOLTAGE  
ON.....+5.5VDC min OR OPEN CIRCUIT  
OFF.....+2.5VDC max. OR SHORT TO PIN2

# AMEYA360

## Components Supply Platform

Authorized Distribution Brand :



Website :

Welcome to visit [www.ameya360.com](http://www.ameya360.com)

Contact Us :

➤ Address :

401 Building No.5, JiuGe Business Center, Lane 2301, Yishan Rd  
Minhang District, Shanghai , China

➤ Sales :

Direct +86 (21) 6401-6692

Email [amall@ameya360.com](mailto:amall@ameya360.com)

QQ 800077892

Skype ameyasales1 ameyasales2

➤ Customer Service :

Email [service@ameya360.com](mailto:service@ameya360.com)

➤ Partnership :

Tel +86 (21) 64016692-8333

Email [mkt@ameya360.com](mailto:mkt@ameya360.com)