



# TL084, TL084A, TL084B

## General purpose JFET quad operational amplifiers

Datasheet — production data

### Features

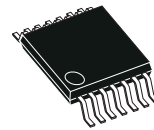
- Wide common-mode (up to  $V_{CC}^+$ ) and differential voltage range
- Low input bias and offset current
- Output short-circuit protection
- High input impedance JFET input stage
- Internal frequency compensation
- Latch up free operation
- High slew rate: 16 V/ $\mu$ s (typical)

### Description

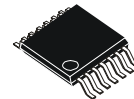
The TL084, TL084A, and TL084B are high-speed, JFET input, quad operational amplifiers incorporating well matched, high voltage JFET and bipolar transistors in a monolithic integrated circuit.

The devices feature high slew rates, low input bias and offset currents, and low offset voltage temperature coefficient.

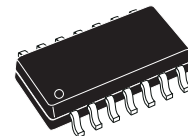
**N**  
**DIP14**  
(Plastic package)



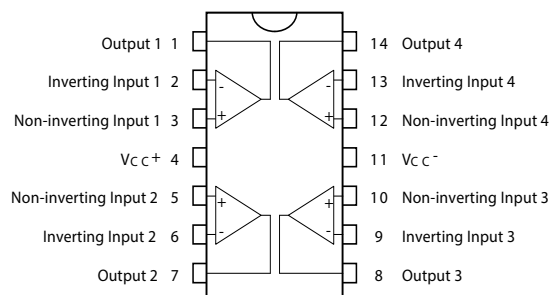
**D**  
**TSSOP14**  
(Thin shrink small outline package)



**D**  
**SO-14**  
(Plastic micropackage)



**Pin connections**  
(Top view)

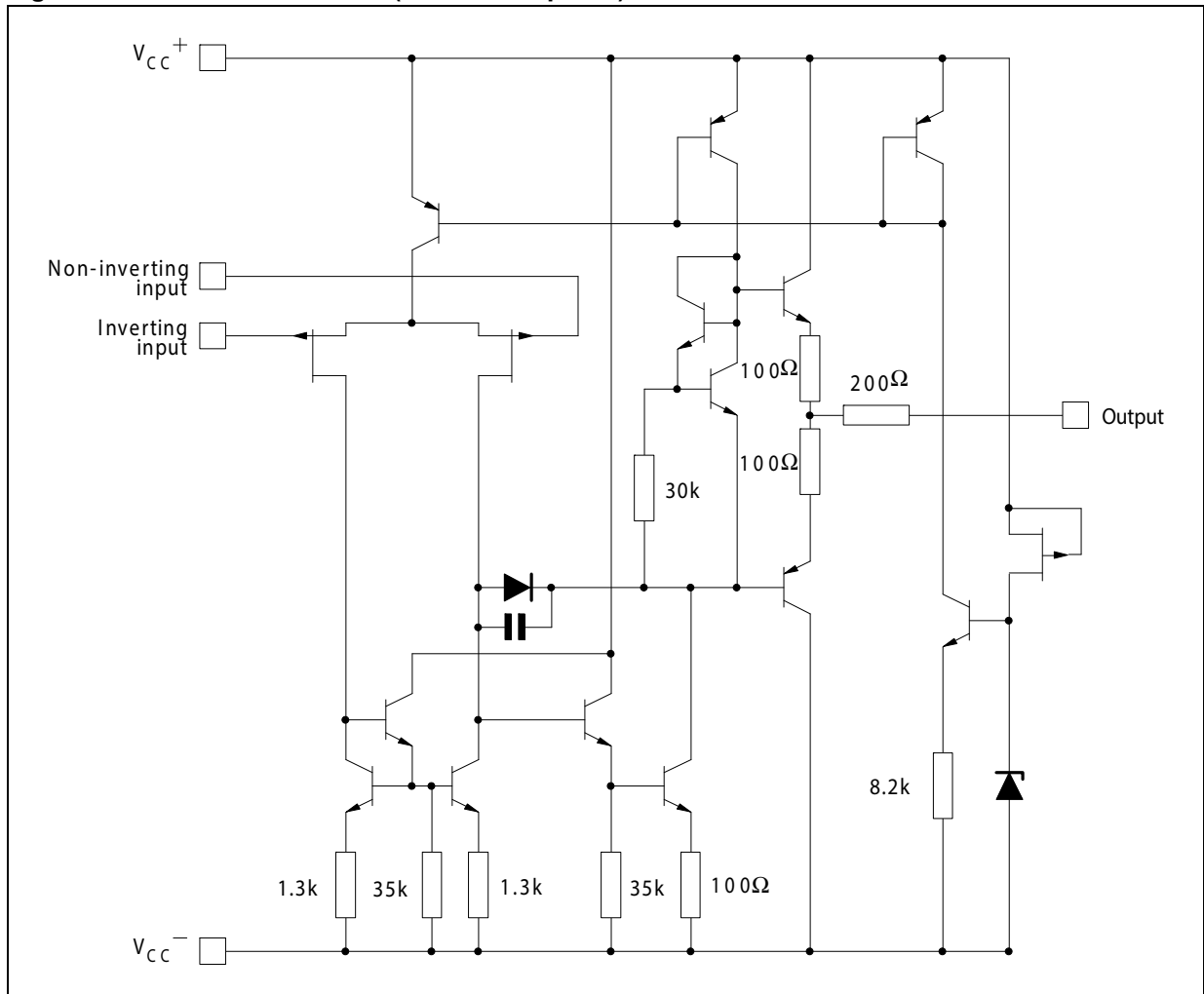


# Contents

|          |  |           |
|----------|--|-----------|
| <b>1</b> | <b>Schematic diagram</b> .....                                 | <b>3</b>  |
| <b>2</b> | <b>Absolute maximum ratings and operating conditions</b> ..... | <b>4</b>  |
| <b>3</b> | <b>Electrical characteristics</b> .....                        | <b>6</b>  |
| <b>4</b> | <b>Parameter measurement information</b> .....                 | <b>11</b> |
| <b>5</b> | <b>Typical applications</b> .....                              | <b>12</b> |
| <b>6</b> | <b>Package information</b> .....                               | <b>14</b> |
|          | 6.1 DIP14 package information .....                            | 14        |
|          | 6.2 TSSOP14 package information .....                          | 15        |
|          | 6.3 SO-14 package information .....                            | 16        |
| <b>7</b> | <b>Ordering information</b> .....                              | <b>17</b> |
| <b>8</b> | <b>Revision history</b> .....                                  | <b>18</b> |

# 1 Schematic diagram

Figure 1. Circuit schematics (for each amplifier)



## 2 Absolute maximum ratings and operating conditions

**Table 1. Absolute maximum ratings**

| Symbol     | Parameter   | Value       | Unit |
|------------|---|-------------|------|
| $V_{CC}$   | Supply voltage <sup>(1)</sup>                                       | ±18         | V    |
| $V_{in}$   | Input voltage <sup>(2)</sup>  | ±15         |      |
| $V_{id}$   | Differential input voltage <sup>(3)</sup>                           | ±30         |      |
| $R_{thja}$ | Thermal resistance junction to ambient <sup>(4)(5)</sup>            |             | °C/W |
|            | DIP14   | 80          |      |
|            | TSSOP14   | 100         |      |
| $R_{thjc}$ | Thermal resistance junction to case <sup>(4)(5)</sup>               |             |      |
|            | DIP14   | 33          |      |
|            | TSSOP14   | 32          |      |
| SO-14      | 31  |             |      |
| $P_{tot}$  | Power dissipation   | 680         | mW   |
|            | Output short-circuit duration <sup>(6)</sup>                        | Infinite    |      |
| $T_{oper}$ | Operating free-air temperature range:<br>for TL084I/TL084AI/TL084BI | -40 to +105 | °C   |
|            | Operating free-air temperature range:<br>for TL084C/TL084AC/TL084BC | 0 to +70    |      |
| $T_{stg}$  | Storage temperature range   | -65 to +150 |      |
| ESD        | HBM: human body model <sup>(7)</sup>                                | 1000        | V    |
|            | MM: machine model <sup>(8)</sup>                                    | 150         |      |
|            | CDM: charged device model <sup>(9)</sup>                            | 1500        |      |

1. All voltage values, except differential voltage, are with respect to the zero reference level (ground) of the supply voltages where the zero reference level is the midpoint between  $V_{CC+}$  and  $V_{CC-}$ .
2. The magnitude of the input voltage must never exceed the magnitude of the supply voltage or 15 volts, whichever is less.
3. Differential voltages are the non-inverting input terminal with respect to the inverting input terminal.
4. Short-circuits can cause excessive heating and destructive dissipation.
5.  $R_{th}$  are typical values.
6. The output may be shorted to ground or to either supply. Temperature and/or supply voltages must be limited to ensure that the dissipation rating is not exceeded.
7. Human body model: 100 pF discharged through a 1.5 kΩ resistor between two pins of the device, done for all couples of pin combinations with other pins floating.
8. Machine model: a 200 pF cap is charged to the specified voltage, then discharged directly between two pins of the device with no external series resistor (internal resistor < 5 Ω), done for all couples of pin combinations with other pins floating.
9. Charged device model: all pins plus package are charged together to the specified voltage and then discharged directly to the ground.

Table 2. Operating conditions

| Symbol     | Parameter                            | TL084I/AI/BI | TL084C/AC/BC | Unit |
|------------|--------------------------------------|--------------|--------------|------|
| $V_{CC}$   | Supply voltage range                 | 6 to 36      |              | V    |
| $T_{oper}$ | Operating free-air temperature range | -40 to +105  | 0 to +70     | °C   |

### 3 Electrical characteristics

Table 3.  $V_{CC} = \pm 15\text{ V}$ ,  $T_{amb} = +25\text{ }^\circ\text{C}$  (unless otherwise specified)

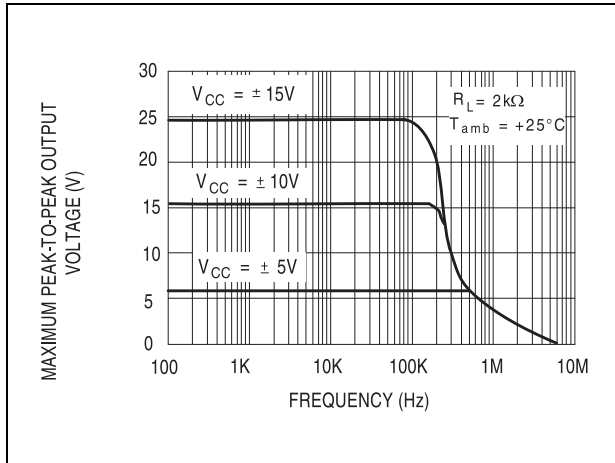
| Symbol                   | Parameter   | TL084I/AI/AC/BI/BC   |             |                              | TL084C               |            |            | Unit                         |
|--------------------------|---|----------------------|-------------|------------------------------|----------------------|------------|------------|------------------------------|
|                          |   | Min.                 | Typ.        | Max.                         | Min.                 | Typ.       | Max.       |                              |
| $V_{io}$                 | Input offset voltage ( $R_S = 50\ \Omega$ )<br>$T_{amb} = +25\text{ }^\circ\text{C}$ TL084<br>$T_{amb} = +25\text{ }^\circ\text{C}$ TL084A<br>$T_{amb} = +25\text{ }^\circ\text{C}$ TL084B<br>$T_{min} \leq T_{amb} \leq T_{max}$ TL084<br>$T_{min} \leq T_{amb} \leq T_{max}$ TL084A<br>$T_{min} \leq T_{amb} \leq T_{max}$ TL084B |                      | 3<br>3<br>1 | 10<br>6<br>3<br>13<br>7<br>5 |                      | 3          | 10         | mV                           |
| $\Delta V_{io}/\Delta T$ | Input offset voltage drift  |                      | 10          |                              |                      | 10         |            | $\mu\text{V}/^\circ\text{C}$ |
| $I_{io}$                 | Input offset current<br>$T_{amb} = +25\text{ }^\circ\text{C}$<br>$T_{min} \leq T_{amb} \leq T_{max}$  |                      | 5           | 100<br>4                     |                      | 5          | 100<br>4   | pA<br>nA                     |
| $I_{ib}$                 | Input bias current <sup>(1)</sup><br>$T_{amb} = +25\text{ }^\circ\text{C}$<br>$T_{min} \leq T_{amb} \leq T_{max}$   |                      | 20          | 200<br>20                    |                      | 30         | 200<br>20  | pA<br>nA                     |
| $A_{vd}$                 | Large signal voltage gain ( $R_L = 2\text{ k}\Omega$ , $V_o = \pm 10\text{ V}$ )<br>$T_{amb} = +25\text{ }^\circ\text{C}$<br>$T_{min} \leq T_{amb} \leq T_{max}$  | 50<br>25             | 200         |                              | 25<br>15             | 200        |            | V/mV                         |
| SVR                      | Supply voltage rejection ratio ( $R_S = 50\ \Omega$ )<br>$T_{amb} = +25\text{ }^\circ\text{C}$<br>$T_{min} \leq T_{amb} \leq T_{max}$   | 80<br>80             | 86          |                              | 70<br>70             | 86         |            | dB                           |
| $I_{CC}$                 | Supply current, no load<br>$T_{amb} = +25\text{ }^\circ\text{C}$<br>$T_{min} \leq T_{amb} \leq T_{max}$   |                      | 1.4         | 2.5<br>2.5                   |                      | 1.4        | 2.5<br>2.5 | mA                           |
| $V_{icm}$                | Input common mode voltage range   | $\pm 11$             | +15<br>-12  |                              | $\pm 11$             | +15<br>-12 |            | V                            |
| CMR                      | Common mode rejection ratio ( $R_S = 50\ \Omega$ )<br>$T_{amb} = +25\text{ }^\circ\text{C}$<br>$T_{min} \leq T_{amb} \leq T_{max}$  | 80<br>80             | 86          |                              | 70<br>70             | 86         |            | dB                           |
| $I_{os}$                 | Output short-circuit current<br>$T_{amb} = +25\text{ }^\circ\text{C}$<br>$T_{min} \leq T_{amb} \leq T_{max}$  | 10<br>10             | 40          | 60<br>60                     | 10<br>10             | 40         | 60<br>60   | mA                           |
| $\pm V_{opp}$            | Output voltage swing<br>$T_{amb} = +25\text{ }^\circ\text{C}$ $R_L = 2\text{ k}\Omega$<br>$R_L = 10\text{ k}\Omega$<br>$T_{min} \leq T_{amb} \leq T_{max}$ $R_L = 2\text{ k}\Omega$<br>$R_L = 10\text{ k}\Omega$  | 10<br>12<br>10<br>12 | 12<br>13.5  |                              | 10<br>12<br>10<br>12 | 12<br>13.5 |            | V                            |
| SR                       | Slew rate<br>$V_{in} = 10\text{ V}$ , $R_L = 2\text{ k}\Omega$ , $C_L = 100\text{ pF}$ , unity gain   | 8                    | 16          |                              | 8                    | 16         |            | V/ $\mu\text{s}$             |

Table 3.  $V_{CC} = \pm 15\text{ V}$ ,  $T_{amb} = +25\text{ }^\circ\text{C}$  (unless otherwise specified) (continued)

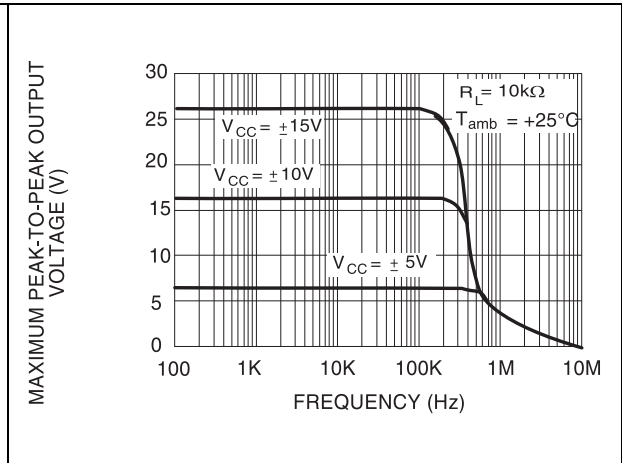
| Symbol          | Parameter  | TL084I/AI/AC/BI/BC |           |      | TL084C |           |      | Unit                                 |
|-----------------|--|--------------------|-----------|------|--------|-----------|------|--------------------------------------|
|                 |  | Min.               | Typ.      | Max. | Min.   | Typ.      | Max. |                                      |
| $t_r$           | Rise time<br>$V_{in} = 20\text{ mV}$ , $R_L = 2\text{ k}\Omega$ , $C_L = 100\text{ pF}$ , unity gain   |                    | 0.1       |      |        | 0.1       |      | $\mu\text{s}$                        |
| $K_{ov}$        | Overshoot<br>$V_{in} = 20\text{ mV}$ , $R_L = 2\text{ k}\Omega$ , $C_L = 100\text{ pF}$ , unity gain   |                    | 10        |      |        | 10        |      | %                                    |
| GBP             | Gain bandwidth product<br>$V_{in} = 10\text{ mV}$ , $R_L = 2\text{ k}\Omega$ , $C_L = 100\text{ pF}$ , $F = 100\text{ kHz}$                              | 2.5                | 4         |      | 2.5    | 4         |      | MHz                                  |
| $R_i$           | Input resistance   |                    | $10^{12}$ |      |        | $10^{12}$ |      | $\Omega$                             |
| THD             | Total harmonic distortion<br>$F = 1\text{ kHz}$ , $R_L = 2\text{ k}\Omega$ , $C_L = 100\text{ pF}$ , $A_v = 20\text{ dB}$ ,<br>$V_o = 2\text{ V}_{pp}$ ) |                    | 0.01      |      |        | 0.01      |      | %                                    |
| $e_n$           | Equivalent input noise voltage<br>$R_S = 100\ \Omega$ , $F = 1\text{ kHz}$   |                    | 15        |      |        | 15        |      | $\frac{\text{nV}}{\sqrt{\text{Hz}}}$ |
| $\phi_m$        | Phase margin   |                    | 45        |      |        | 45        |      | degrees                              |
| $V_{o1}/V_{o2}$ | Channel separation<br>$A_v = 100$  |                    | 120       |      |        | 120       |      | dB                                   |

1. The input bias currents are junction leakage currents which approximately double for every  $10^\circ\text{C}$  increase in the junction temperature.

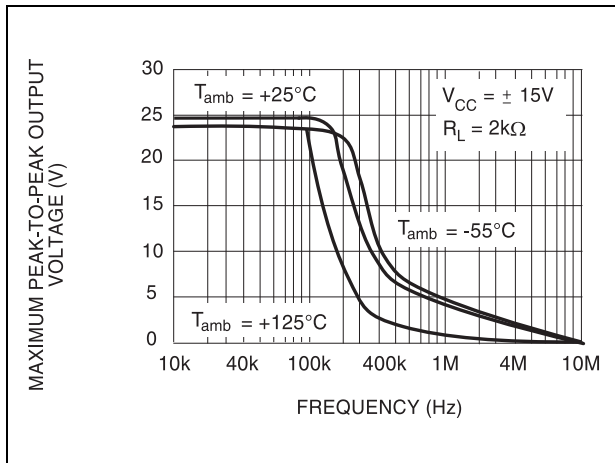
**Figure 2. Maximum peak-to-peak output voltage vs. frequency ( $R_L = 2\text{ k}\Omega$ )**



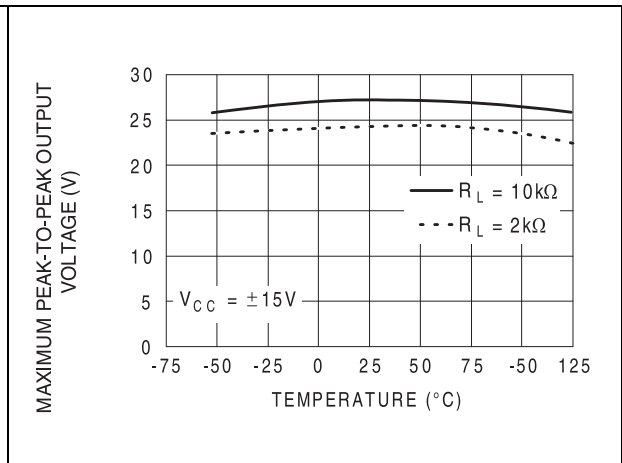
**Figure 3. Maximum peak-to-peak output voltage vs. frequency ( $R_L = 10\text{ k}\Omega$ )**



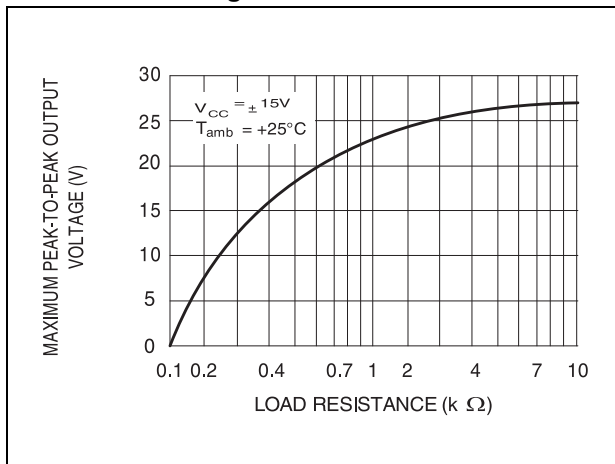
**Figure 4. Maximum peak-to-peak output voltage vs. frequency and temp.**



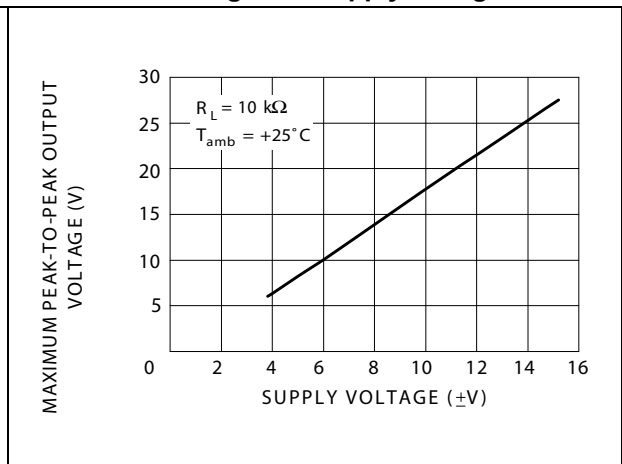
**Figure 5. Maximum peak-to-peak output voltage vs. free air temp.**



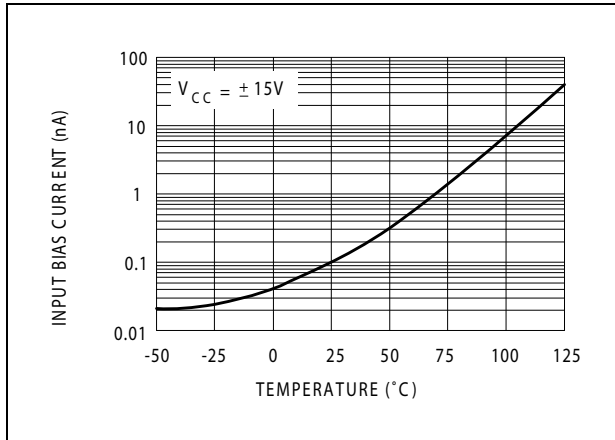
**Figure 6. Maximum peak-to-peak output voltage vs. load resistance**



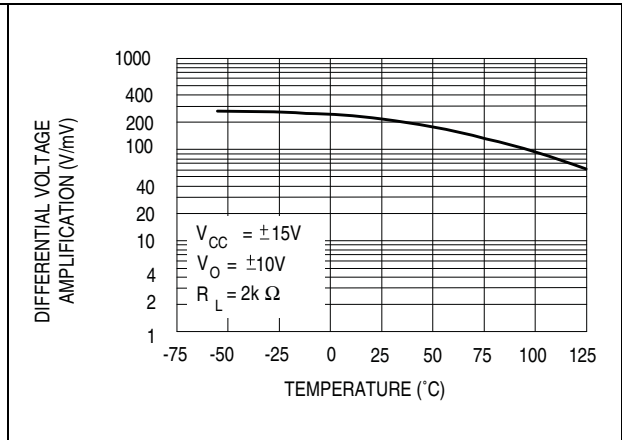
**Figure 7. Maximum peak-to-peak output voltage vs. supply voltage**



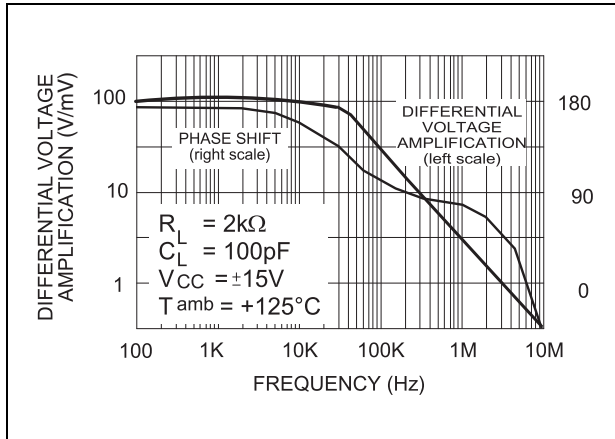
**Figure 8. Input bias current vs. free air temp.**



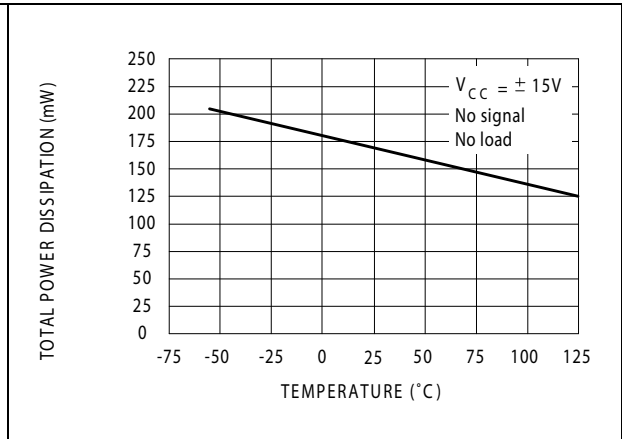
**Figure 9. Large signal differential voltage amplification vs. free air temp.**



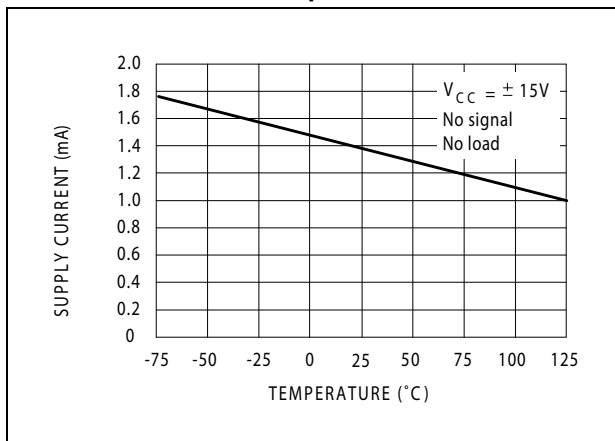
**Figure 10. Large signal differential voltage amplification and phase shift vs. frequency**



**Figure 11. Total power dissipation vs. free air temp.**



**Figure 12. Supply current per amplifier vs. free air temp.**



**Figure 13. Supply current per amplifier vs. supply voltage**

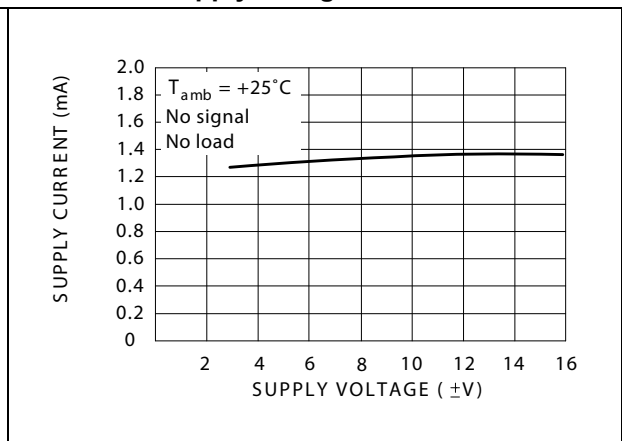


Figure 14. Common mode rejection ratio vs. free air temp.

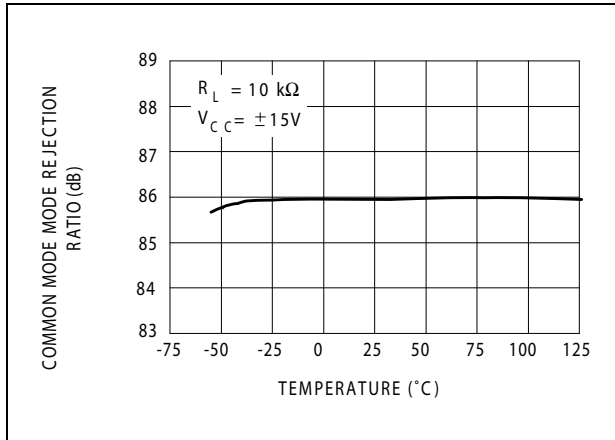


Figure 15. Voltage follower large signal pulse response

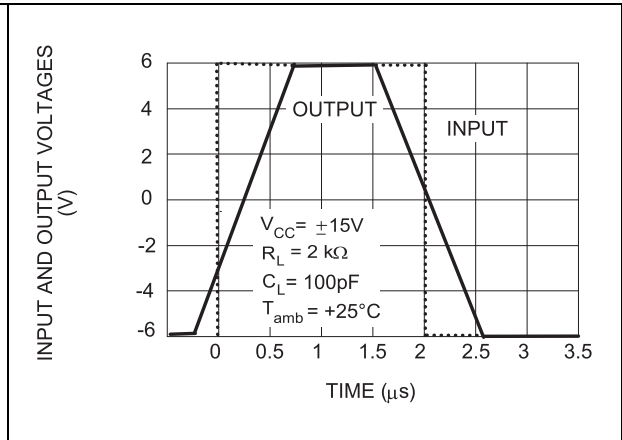


Figure 16. Output voltage vs. elapsed time

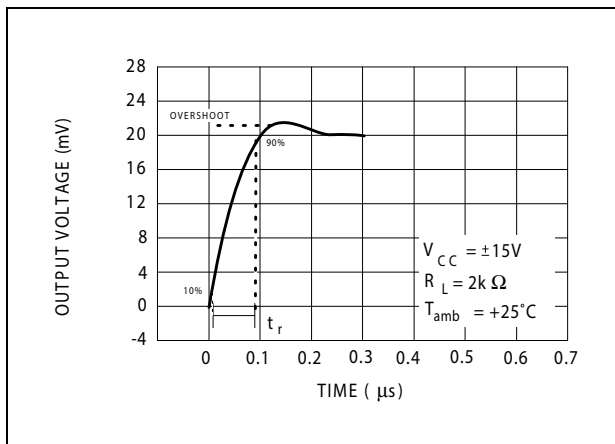


Figure 17. Equivalent input noise voltage vs. frequency

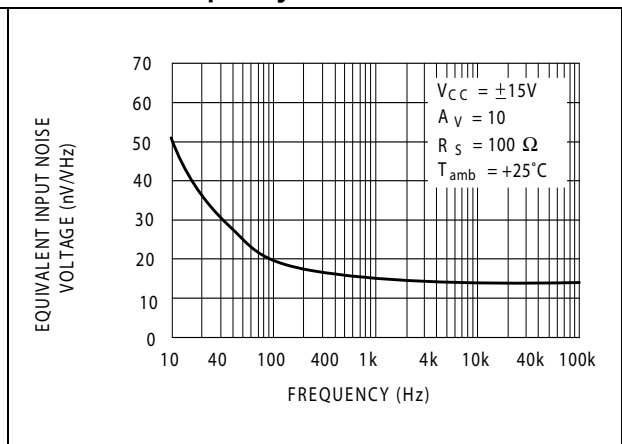
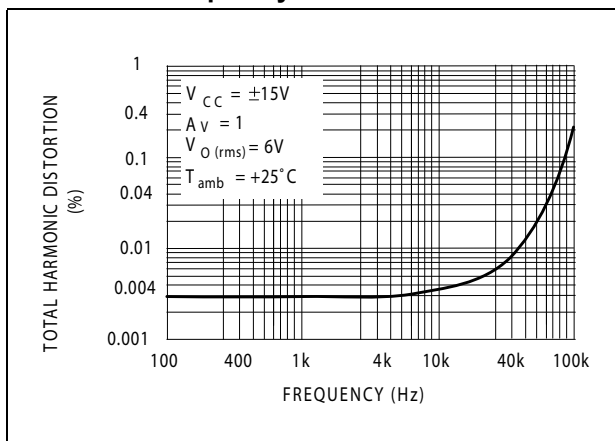


Figure 18. Total harmonic distortion vs. frequency



## 4 Parameter measurement information

Figure 19. Voltage follower

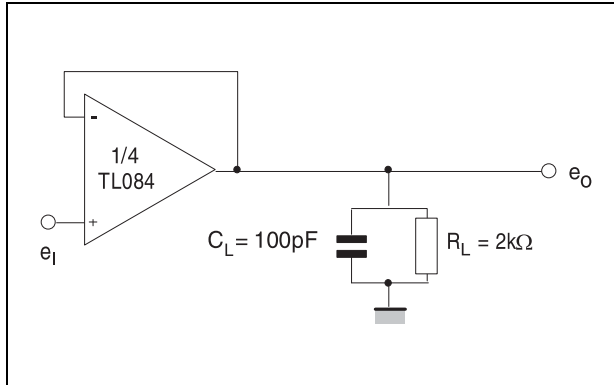
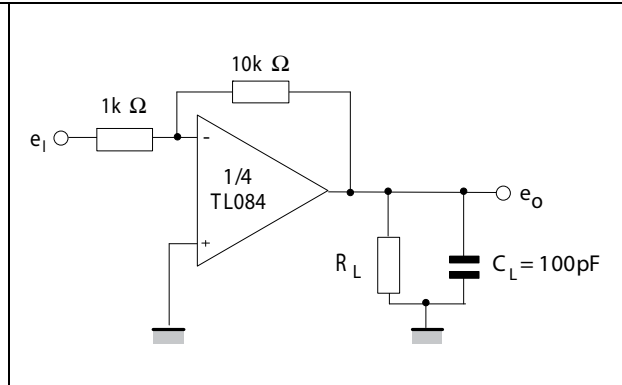


Figure 20. Gain-of-10 inverting amplifier



## 5 Typical applications

Figure 21. Audio distribution amplifier

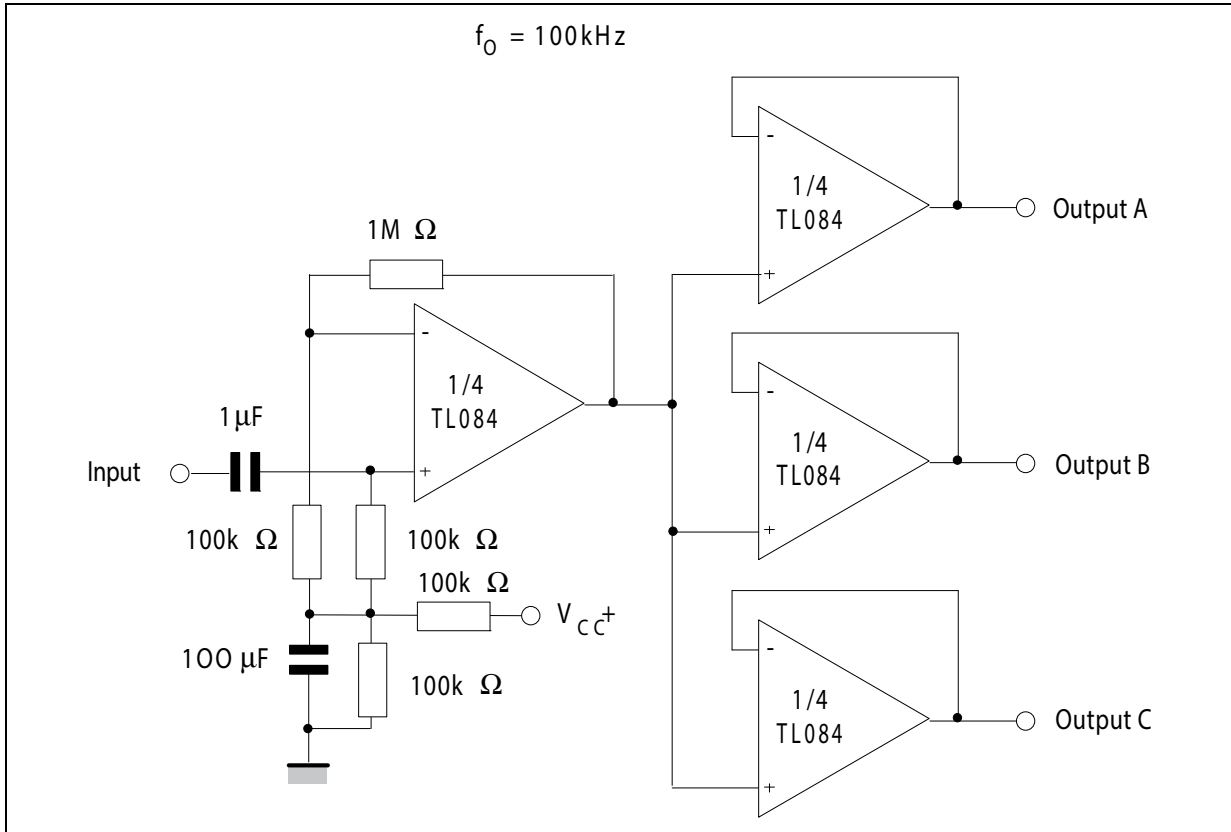


Figure 22. Positive feedback bandpass filter

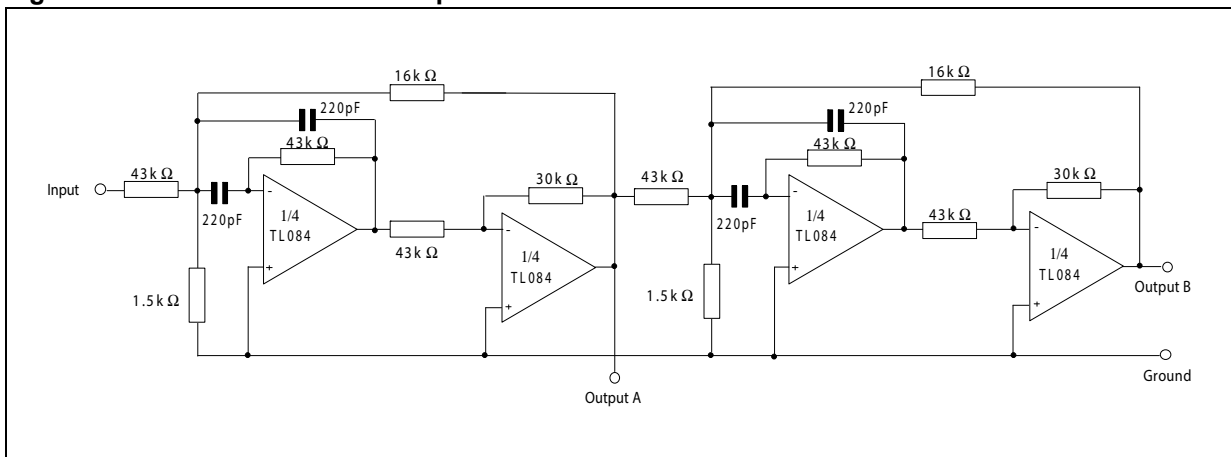
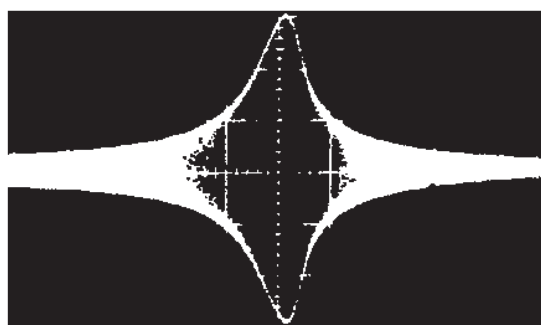
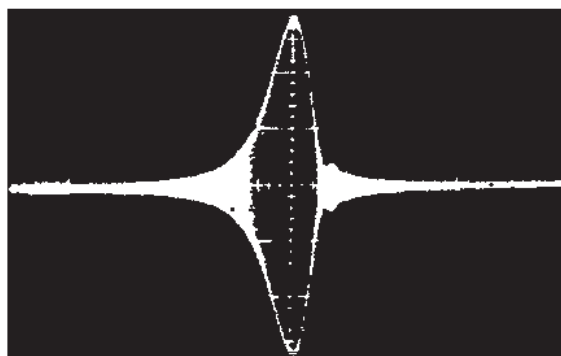


Figure 23. Output A



**Second order bandpass filter**  
 $f_o = 100 \text{ kHz}$ ;  $Q = 30$ ; Gain = 4

Figure 24. Output B



**Cascaded bandpass filter**  
 $f_o = 100 \text{ kHz}$ ;  $Q = 69$ ; Gain = 16

## 6 Package information

In order to meet environmental requirements, ST offers these devices in different grades of ECOPACK® packages, depending on their level of environmental compliance. ECOPACK® specifications, grade definitions and product status are available at: [www.st.com](http://www.st.com). ECOPACK® is an ST trademark.

### 6.1 DIP14 package information

Figure 25. DIP14 package mechanical drawing

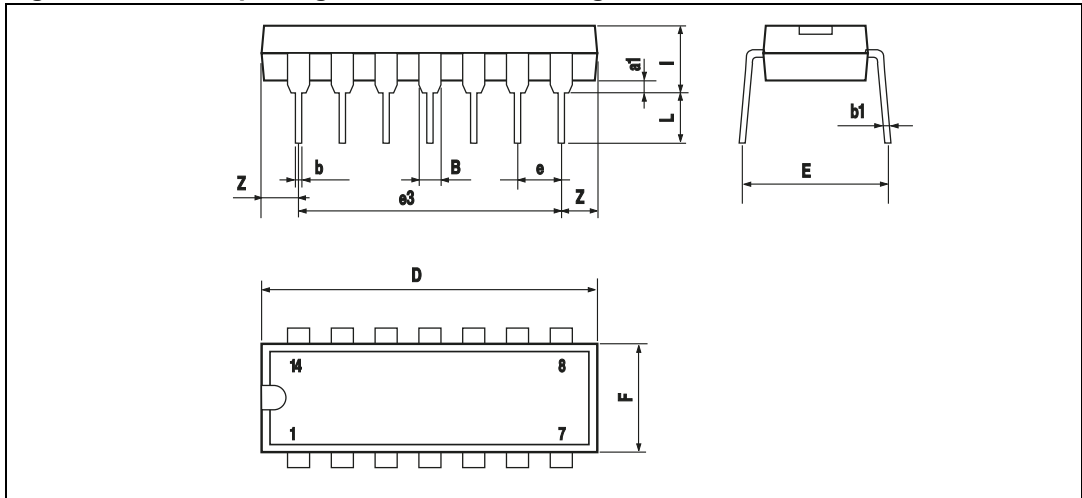


Table 4. DIP14 package mechanical data

| Ref. | Dimensions  |       |      |        |       |       |
|------|-------------|-------|------|--------|-------|-------|
|      | Millimeters |       |      | Inches |       |       |
|      | Min.        | Typ.  | Max. | Min.   | Typ.  | Max.  |
| a1   | 0.51        |       |      | 0.020  |       |       |
| B    | 1.39        |       | 1.65 | 0.055  |       | 0.065 |
| b    |             | 0.5   |      |        | 0.020 |       |
| b1   |             | 0.25  |      |        | 0.010 |       |
| D    |             |       | 20   |        |       | 0.787 |
| E    |             | 8.5   |      |        | 0.335 |       |
| e    |             | 2.54  |      |        | 0.100 |       |
| e3   |             | 15.24 |      |        | 0.600 |       |
| F    |             |       | 7.1  |        |       | 0.280 |
| l    |             |       | 5.1  |        |       | 0.201 |
| L    |             | 3.3   |      |        | 0.130 |       |
| Z    | 1.27        |       | 2.54 | 0.050  |       | 0.100 |

## 6.2 TSSOP14 package information

Figure 26. TSSOP14 package mechanical drawing

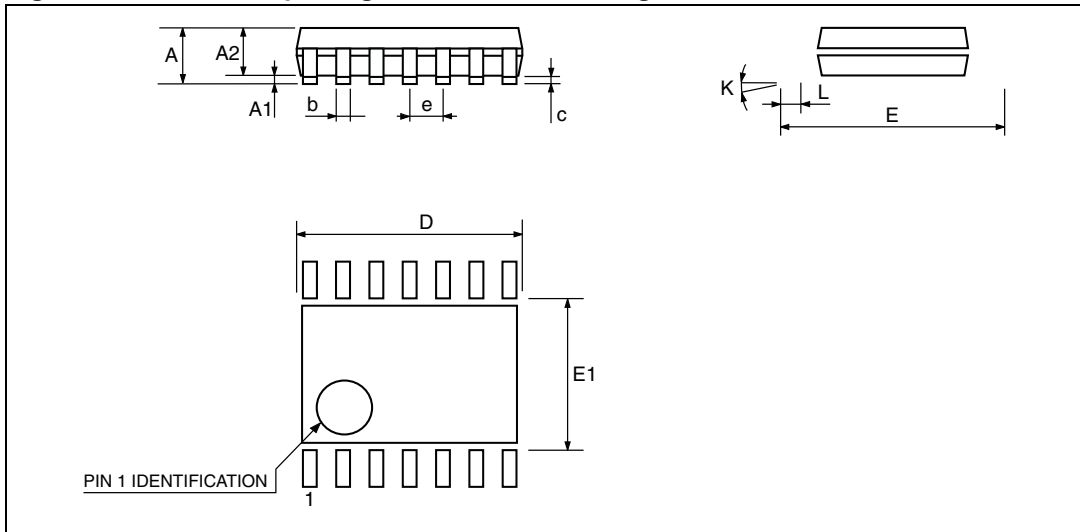


Figure 27. TSSOP14 package mechanical data

| Ref. | Millimeters |          |      | Inches |            |        |
|------|-------------|----------|------|--------|------------|--------|
|      | Min.        | Typ.     | Max. | Min.   | Typ.       | Max.   |
| A    |             |          | 1.2  |        |            | 0.047  |
| A1   | 0.05        |          | 0.15 | 0.002  | 0.004      | 0.006  |
| A2   | 0.8         | 1        | 1.05 | 0.031  | 0.039      | 0.041  |
| b    | 0.19        |          | 0.30 | 0.007  |            | 0.012  |
| c    | 0.09        |          | 0.20 | 0.004  |            | 0.0089 |
| D    | 4.9         | 5        | 5.1  | 0.193  | 0.197      | 0.201  |
| E    | 6.2         | 6.4      | 6.6  | 0.244  | 0.252      | 0.260  |
| E1   | 4.3         | 4.4      | 4.48 | 0.169  | 0.173      | 0.176  |
| e    |             | 0.65 BSC |      |        | 0.0256 BSC |        |
| K    | 0°          |          | 8°   | 0°     |            | 8°     |
| L1   | 0.45        | 0.60     | 0.75 | 0.018  | 0.024      | 0.030  |

### 6.3 SO-14 package information

Figure 28. SO-14 package mechanical drawing

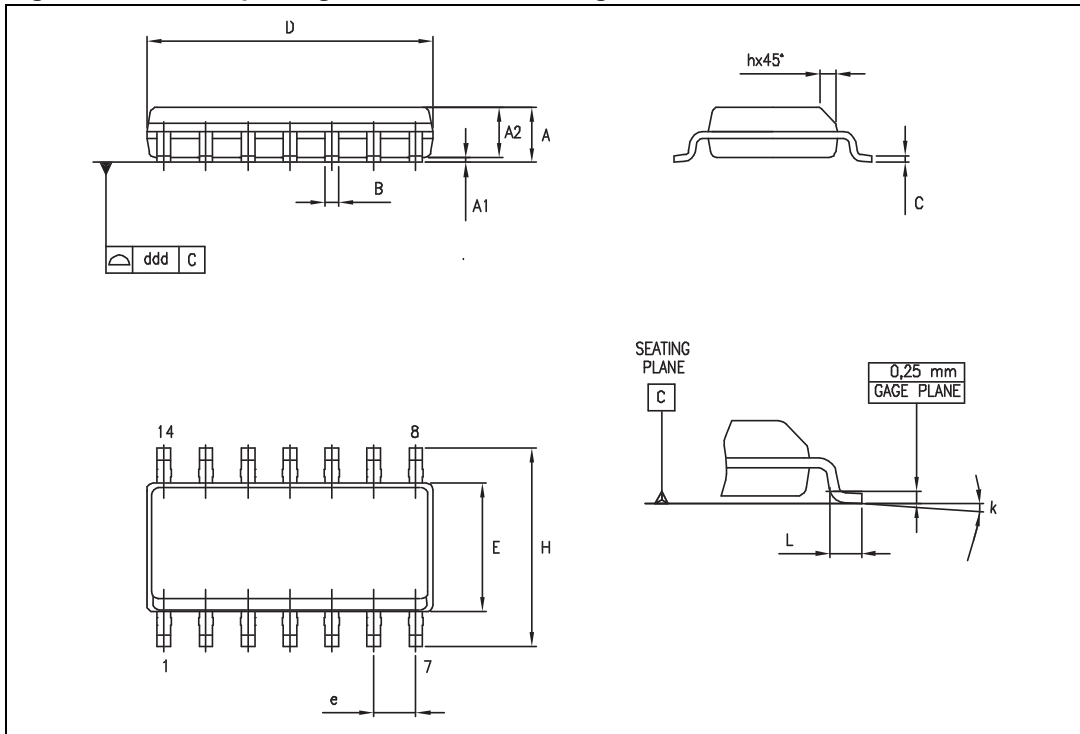


Table 5. SO-14 package mechanical data

| Ref. | Dimensions  |      |      |        |      |       |
|------|-------------|------|------|--------|------|-------|
|      | Millimeters |      |      | Inches |      |       |
|      | Min.        | Typ. | Max. | Min.   | Typ. | Max.  |
| A    | 1.35        |      | 1.75 | 0.05   |      | 0.068 |
| A1   | 0.10        |      | 0.25 | 0.004  |      | 0.009 |
| A2   | 1.10        |      | 1.65 | 0.04   |      | 0.06  |
| B    | 0.33        |      | 0.51 | 0.01   |      | 0.02  |
| C    | 0.19        |      | 0.25 | 0.007  |      | 0.009 |
| D    | 8.55        |      | 8.75 | 0.33   |      | 0.34  |
| E    | 3.80        |      | 4.0  | 0.15   |      | 0.15  |
| e    |             | 1.27 |      |        | 0.05 |       |
| H    | 5.80        |      | 6.20 | 0.22   |      | 0.24  |
| h    | 0.25        |      | 0.50 | 0.009  |      | 0.02  |
| L    | 0.40        |      | 1.27 | 0.015  |      | 0.05  |
| k    | 8° (max.)   |      |      |        |      |       |
| ddd  |             |      | 0.10 |        |      | 0.004 |

## 7 Ordering information

**Table 6. Order codes**

| Order code   | Temperature range | Package                     | Packing                | Marking                         |
|--|-------------------|-----------------------------|------------------------|---------------------------------|
| TL084IN<br>TL084AIN<br>TL084BIN  | -40°C, +105°C     | DIP14                       | Tube                   | TL084IN<br>TL084AIN<br>TL084BIN |
| TL084ID/IDT<br>TL084AID/AIDT<br>TL084BID/BIDT                                      |                   | SO-14                       | Tube or<br>tape & reel | 084I<br>084AI<br>084BI          |
| TL084IYDT <sup>(1)</sup><br>TL084AIYDT <sup>(1)</sup><br>TL084BIYDT <sup>(1)</sup> |                   | SO-14<br>(Automotive grade) | Tube or<br>tape & reel | 084IY<br>084AIY<br>084BIY       |
| TL084IP/IPT<br>TL084AIP/AIPT<br>TL084BIP/BIPT                                      |                   | TSSOP14                     | Tube or<br>tape & reel | 084I<br>084AI<br>084BI          |
| TL084CN<br>TL084ACN<br>TL084BCN  | 0°C, +70°C        | DIP14                       | Tube                   | TL084CN<br>TL084ACN<br>TL084BCN |
| TL084CD/CDT<br>TL084ACD/ACDT<br>TL084BCD/BCDT                                      |                   | SO-14                       | Tube or<br>tape & reel | 084C<br>084AC<br>084BC          |
| TL084CP/CPT<br>TL084ACP/ACPT<br>TL084BCP/BCPT                                      |                   | TSSOP14                     | Tube or<br>tape & reel | 084C<br>084AC<br>084BC          |

1. Qualification and characterization according to AEC Q100 and Q003 or equivalent, advanced screening according to AEC Q001 & Q 002 or equivalent.

## 8 Revision history

**Table 7. Document revision history**

| Date        | Revision | Changes   |
|-------------|----------|---|
| 28-Mar-2001 | 1        | Initial release.  |
| 30-Jul-2007 | 2        | Added values for $R_{thja}$ , $R_{thjc}$ and ESD in <a href="#">Table 1: Absolute maximum ratings</a> .<br>Added <a href="#">Table 2: Operating conditions</a> .<br>Expanded <a href="#">Table 6: Order codes</a> .<br>Template update.   |
| 15-Jul-2008 | 3        | Removed information concerning military temperature ranges (TL084Mx, TL084AMx, TL084BMx).<br>Added automotive grade order codes in <a href="#">Table 6: Order codes</a> .   |
| 05-Jul-2012 | 4        | Removed commercial types TL084IYD, TL084AIYD and TL084BIYD.<br>Updated <a href="#">Table 6: Order codes</a> .   |
| 29-Jan-2013 | 5        | Added part numbers TL084A and TL084B.<br>Added SO-14 package silhouette.<br>Updated layout of <a href="#">Table 1: Absolute maximum ratings</a> .<br>Updated of <a href="#">Table 3: <math>V_{CC} = \pm 15\text{ V}</math>, <math>T_{amb} = +25\text{ }^\circ\text{C}</math> (unless otherwise specified)</a> .<br>Replaced SO-14 package mechanical drawing ( <a href="#">Figure 28: SO-14 package mechanical drawing</a> ).<br>Replaced SO-14 package mechanical data ( <a href="#">Table 5: SO-14 package mechanical data</a> ). |

**Please Read Carefully:**

Information in this document is provided solely in connection with ST products. STMicroelectronics NV and its subsidiaries ("ST") reserve the right to make changes, corrections, modifications or improvements, to this document, and the products and services described herein at any time, without notice.

All ST products are sold pursuant to ST's terms and conditions of sale.

Purchasers are solely responsible for the choice, selection and use of the ST products and services described herein, and ST assumes no liability whatsoever relating to the choice, selection or use of the ST products and services described herein.

No license, express or implied, by estoppel or otherwise, to any intellectual property rights is granted under this document. If any part of this document refers to any third party products or services it shall not be deemed a license grant by ST for the use of such third party products or services, or any intellectual property contained therein or considered as a warranty covering the use in any manner whatsoever of such third party products or services or any intellectual property contained therein.

**UNLESS OTHERWISE SET FORTH IN ST'S TERMS AND CONDITIONS OF SALE ST DISCLAIMS ANY EXPRESS OR IMPLIED WARRANTY WITH RESPECT TO THE USE AND/OR SALE OF ST PRODUCTS INCLUDING WITHOUT LIMITATION IMPLIED WARRANTIES OF MERCHANTABILITY, FITNESS FOR A PARTICULAR PURPOSE (AND THEIR EQUIVALENTS UNDER THE LAWS OF ANY JURISDICTION), OR INFRINGEMENT OF ANY PATENT, COPYRIGHT OR OTHER INTELLECTUAL PROPERTY RIGHT.**

**UNLESS EXPRESSLY APPROVED IN WRITING BY TWO AUTHORIZED ST REPRESENTATIVES, ST PRODUCTS ARE NOT RECOMMENDED, AUTHORIZED OR WARRANTED FOR USE IN MILITARY, AIR CRAFT, SPACE, LIFE SAVING, OR LIFE SUSTAINING APPLICATIONS, NOR IN PRODUCTS OR SYSTEMS WHERE FAILURE OR MALFUNCTION MAY RESULT IN PERSONAL INJURY, DEATH, OR SEVERE PROPERTY OR ENVIRONMENTAL DAMAGE. ST PRODUCTS WHICH ARE NOT SPECIFIED AS "AUTOMOTIVE GRADE" MAY ONLY BE USED IN AUTOMOTIVE APPLICATIONS AT USER'S OWN RISK.**

Resale of ST products with provisions different from the statements and/or technical features set forth in this document shall immediately void any warranty granted by ST for the ST product or service described herein and shall not create or extend in any manner whatsoever, any liability of ST.

ST and the ST logo are trademarks or registered trademarks of ST in various countries.

Information in this document supersedes and replaces all information previously supplied.

The ST logo is a registered trademark of STMicroelectronics. All other names are the property of their respective owners.

© 2013 STMicroelectronics - All rights reserved

STMicroelectronics group of companies

Australia - Belgium - Brazil - Canada - China - Czech Republic - Finland - France - Germany - Hong Kong - India - Israel - Italy - Japan - Malaysia - Malta - Morocco - Philippines - Singapore - Spain - Sweden - Switzerland - United Kingdom - United States of America

[www.st.com](http://www.st.com)



# AMEYA360

## Components Supply Platform

### Authorized Distribution Brand :



### Website :

Welcome to visit [www.ameya360.com](http://www.ameya360.com)

### Contact Us :

#### ➤ Address :

401 Building No.5, JiuGe Business Center, Lane 2301, Yishan Rd  
Minhang District, Shanghai , China

#### ➤ Sales :

Direct +86 (21) 6401-6692

Email [amall@ameya360.com](mailto:amall@ameya360.com)

QQ 800077892

Skype [ameyasales1](#) [ameyasales2](#)

#### ➤ Customer Service :

Email [service@ameya360.com](mailto:service@ameya360.com)

#### ➤ Partnership :

Tel +86 (21) 64016692-8333

Email [mkt@ameya360.com](mailto:mkt@ameya360.com)