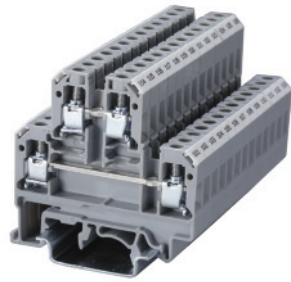


Altech double level terminals are the answer to high wiring density problems posed by certain unavoidable wiring arrangements. Double level terminals have the following advantages:

- Double wiring density available without extension of mounting rails.
- Interconnection/shorting can be done at both levels.
- Marking/identification by marking tags possible at both levels.

CDL4UN(I.S) internally shorted double level terminals are useful for distribution applications by using shorting links at lower levels.

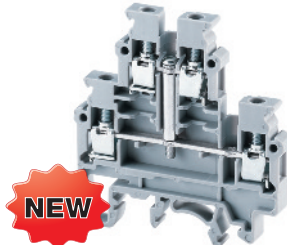
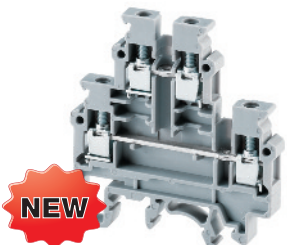
**Now uses larger MT6 tag for easier visibility.**



**Feed-Through Double Level**

**CDL4UN**

**CDL4UN(I.S)**



Terminal Width	6 mm			6 mm		
Height x Length	54 x 55.5 mm			54 x 55.5 mm		
Stripping Length	9 mm			9 mm		
Insulation Material	Polyamide 6.6			Polyamide 6.6		
Type of Connection	4 screw clamps & 2 tapped holes for cross connection			4 screw clamps & 1 tapped hole for cross connection		
Approvals						
Wire Range	22-10 AWG	0.2-4 sq.mm	22-10 AWG	22-10 AWG	0.2-4 sq.mm	22-10 AWG
Voltage Rating	600V	800 V	600 V	600 V	800 V	600 V
Current Rating	35 A	32 A	35 A	35 A	32 A	35 A
Torque	7 lb-in	0.5 Nm	7 lb-in	7 lb-in	0.5 Nm	7 lb-in

Other Approvals							
-----------------	--	--	--	--	--	--	--

Cat. No.	Std. Pk.	Cat. No.	Std. Pk.
----------	----------	----------	----------

<b>Terminal Block</b>	<b>CDL4UN</b>	100	<b>CDL4UN(I.S)</b>	100
-----------------------	---------------	-----	--------------------	-----

End Plate	EPCDL4UN	50	EPCDL4UN	50
-----------	----------	----	----------	----

Separator Plate	SPCDL4U	100	SPCDL4U	100
-----------------	---------	-----	---------	-----

DIN Rail for ordering information refer to pages 90-91				
--	--	--	--	--

End Stop for ordering information refer to page 92	CA702	50	CA702	50
	CA802	50	CA802	50

Internal Jumper	2 pole	CA722/2	100	CA722/2	100
	3 pole	CA722/3	50	CA722/3	50
	4 pole	CA722/4	50	CA722/4	50
	10 pole	CA722/10	10	CA722/10	10

Insulated Internal Jumper	2 pole	CA742/2	100	CA742/2	100
	3 pole	CA742/3	50	CA742/3	50
	4 pole	CA742/4	50	CA742/4	50
	10 pole	CA742/10	10	CA742/10	10

Current Bars	2 pole	CA703/1	100	CA703/1	100
	3 pole	CA704/1	100	CA704/1	100
	4 pole	CA705/1	100	CA705/1	100
	10 pole	CA732/10	100	CA732/10	100
	10 pole (breakable)	CA732/10-A	100	CA732/10-A	100
	10 pole	CA732/100	10	CA732/100	10

Shorting Sleeve & Screw	CA707/S/Q/01	100	CA607/S/Q	100
-------------------------	--------------	-----	-----------	-----

External Jumper	2 pole	CA714/2	100	CA714/2	100
	3 pole	CA714/3	100	CA714/3	100
	4 pole	CA714/4	50	CA714/4	50
	10 pole	CA714/10	25	CA714/10	25

Marking Tags	MT6	100	MT6	100
--------------	-----	-----	-----	-----

**COLOR BLOCKS**  
(other than standard grey)

When ordering please add color suffix to Cat. No.  
Example for color Red: **Cat.No./R**

Color	Ordering Suffix	
Red	R	
Yellow	Y	
Blue	BU	
Green	G	
Orange	O	
Beige	BG	
Dark Brown	DB	
Black	BL	
White	W	

Consult Altech for availability:

# AMEYA360

## Components Supply Platform

Authorized Distribution Brand :



Website :

Welcome to visit [www.ameya360.com](http://www.ameya360.com)

Contact Us :

➤ Address :

401 Building No.5, JiuGe Business Center, Lane 2301, Yishan Rd  
Minhang District, Shanghai , China

➤ Sales :

Direct +86 (21) 6401-6692

Email [amall@ameya360.com](mailto:amall@ameya360.com)

QQ 800077892

Skype [ameyasales1](#) [ameyasales2](#)

➤ Customer Service :

Email [service@ameya360.com](mailto:service@ameya360.com)

➤ Partnership :

Tel +86 (21) 64016692-8333

Email [mkt@ameya360.com](mailto:mkt@ameya360.com)