

NOTES:

1. MATERIALS AND FINISHES:
BODY - STAINLESS STEEL
CONTACT - BERYLLIUM COPPER, GOLD PLATING
INSULATOR - PTFE
2. ELECTRICAL:
A. IMPEDANCE: 50 OHM
3. MECHANICAL:
A. DURABILITY: 500 CYCLES MIN.
4. PACKAGING:
A. QUANTITY: SINGLE PACK
B. MARKING: BAG TO BE MARKED
"AMPHENOLRF, 901-9218, AND DATE CODE"

901-9218

DRAWING NO.

THIRD ANGLE PROJ.



REV

DESCRIPTION

DATE

ECO

APPR

--

RELEASED TO MFG.

--

--

--

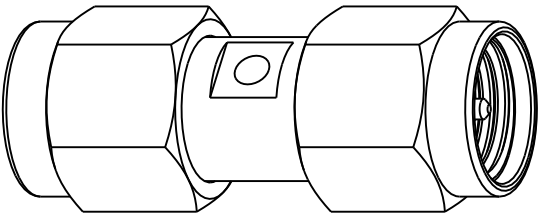
L

REDRAWN IN PRO-E, ADDED SHEET 2

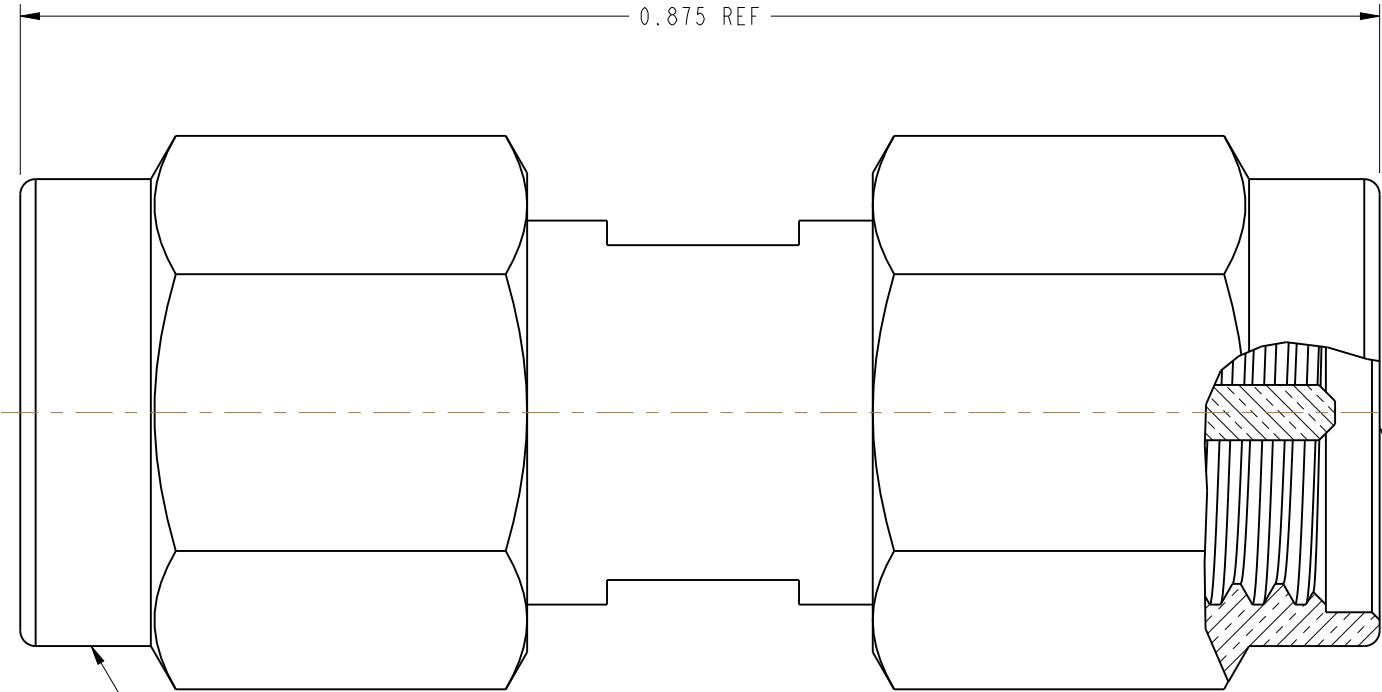
5/3/10

47700

BM

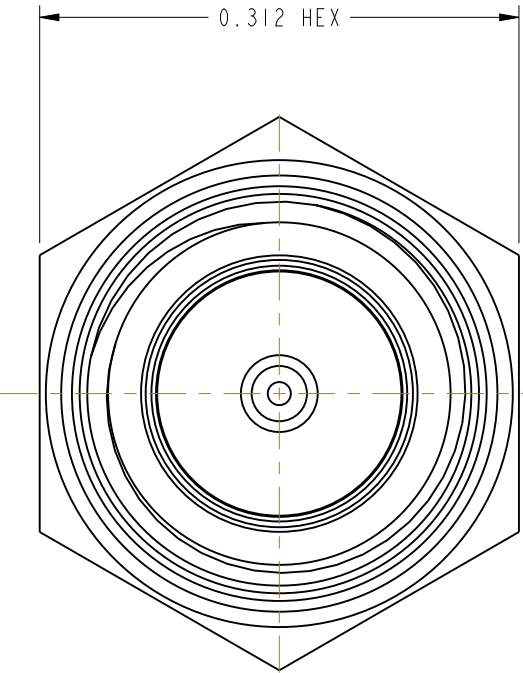


SCALE 3.000



STAMP "AMPHENOLRF"

INTERFACE PER MIL-STD-348
SMA SERIES, BOTH ENDS.



CUSTOMER OUTLINE DRAWING
ALL OTHER SHEETS ARE FOR INTERNAL USE ONLY

UNLESS OTHERWISE SPECIFIED, DIMENSIONS ARE IN INCHES AND TOLERANCES ARE:
2 PLACE DECIMAL 3 PLACE DECIMAL ANGLES
±.015 (0,381 mm) ±.005 (0,127 mm) ± 1°

NOTICE - These drawings, specifications, or other data (1) are, and remain the property of Amphenol Corp. (2) must be returned upon request; and (3) are confidential and not to be disclosed to any person other than those to whom they are given by Amphenol Corp. The furnishing of these drawings, specifications, or other data by Amphenol Corp., or to any other person to anyone for any purpose is not to be regarded by implication or otherwise in any manner licensing, granting rights or permitting such holder or any other person to manufacture, use or sell any product, process or design, patented or otherwise, that may in any way be related to or disclosed by said drawings, specifications, or other data.

MATERIAL
SEE NOTES

REFERENCE

DRAWN
BALAJI M

ENGINEER

APPROVED
K. CAPOZZI

CAD FILE
I:\SMA\901-9218

DATE
04-Aug-09

DATE

DATE
5/3/10

TITLE

SMA PLUG TO PLUG
ADAPTOR

Amphenol RF
Danbury, CT, USA
Tainan, Taiwan
Shenzhen, China
www.amphenolrf.com

SCALE: 8.0:1 SHEET 2 OF 2

CODE ID 74868
DWG SIZE B
DRAWING NO. 901-9218

REV
L

Authorized Distribution Brand :



Website :

Welcome to visit www.ameya360.com

Contact Us :

➤ Address :

401 Building No.5, JiuGe Business Center, Lane 2301, Yishan Rd
Minhang District, Shanghai , China

➤ Sales :

Direct +86 (21) 6401-6692
Email amall@ameya360.com
QQ 800077892
Skype ameyasales1 ameyasales2

➤ Customer Service :

Email service@ameya360.com

➤ Partnership :

Tel +86 (21) 64016692-8333
Email mkt@ameya360.com