



## **Important notes about Classic Panel Mount Indicator Catalog Pages**

### **SCROLL DOWN TO VIEW CATALOG PAGE**

This catalog page is out-of-print and is used with the understanding that the information shown could be out-of-date. In many cases, part numbers shown on this page are discontinued. Most notably, many "Complete Assembly" parts, which consist of a cap and a base, can no longer be ordered by the 14-digit ordering code. To obtain these parts, please order the cap and base part numbers separately. This process provides the components contained with the original "Complete Assembly" part number.

All Dialight Classic Panel Mount Indicators need a leading 3-digit numerical series. In some cases, this catalog will show a 2-digit series. In this case, please add a leading zero. For example, 81-0211-300 becomes 081-0211-300.

Part numbers listed on Dialight catalog pages designate parts with Red lenses. For ordering lens colors other than red, consult the chart below. In most cases, the color is dictated by the 7<sup>th</sup> digit. For example, 095-0932-003 for a green cap.

Lens Colors	
1 - Red	5 - White
2 - Green	6 - Light Yellow
3 - Yellow	7 - Clear
4 - Blue	

[Click here for a cross reference guide to assembly part numbers.](#)

[Click here to view Frequently Asked Questions concerning Panel Mount Indicators.](#)

### **SCROLL DOWN TO VIEW CATALOG PAGE**

# Light Shield Incandescent Indicators



T-1 3/4  
MIDGET  
FLANGE BASE

See lamp ratings  
on page J.

ONE TERMINAL – FULLY INSULATED for use on grounded circuits.

FOR FRONT MOUNTING IN 15/32" CLEARANCE HOLE

MEET OR EXCEED ENVIRONMENTAL AND OPERATIONAL REQUIREMENTS  
OF MIL-L-7806 AND MIL-L-3661

An opening in the side of the metal lamp holder emits light on the panel to illuminate dials or controls. The usual opening is 1/4" X 5/32". The 113 series has a molded colored filter to provide a colored light†.

How to designate the Three Digit Part Number Suffix (–XXX)  
(4 Series only)

Finish	Resistor	Hardware
1—white nickel	0—none	1 — brass
2—black nickel		3 — water tight on face of panel (113 Series only)
3—polished chrome		7 — insulated mounting*

Example: 4-1930-2900-101 (white nickel finish, no resistor, brass hardware).

† For 2 terminal requirements, assembly is supplied with 2 insulating washers and a lug. Mounting hole becomes 9/16".

## MATERIALS AND FINISHES

- **Mounting Bushing:** Standard— Brass, black nickel finish. Optional, (4 series only)— Polished chrome or white nickel finish.
- **Mounting Nut:** Brass, white nickel finish.
- **Internal-tooth Lockwasher:** Phosphor bronze, white nickel finish.
- **Terminals:** Soldering— Brass, hot tin dip. Screw— Brass, cadmium plated with yellow iridescent chromate finish.
- **Insulation:** Per MIL-L-7806.

## 4 SERIES 113 SERIES



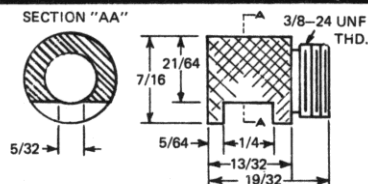
4-1930-2900-201 (without filter)



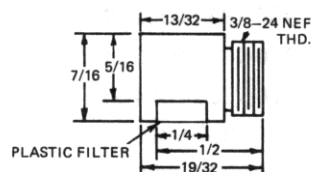
113-1830-2931-201 (with molded filter)

## BASE PART NUMBERS

### CAP PART NUMBERS

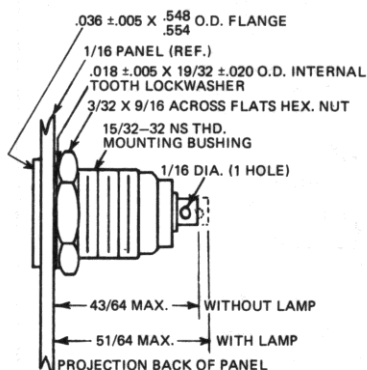


4-2900-200 (without filter)



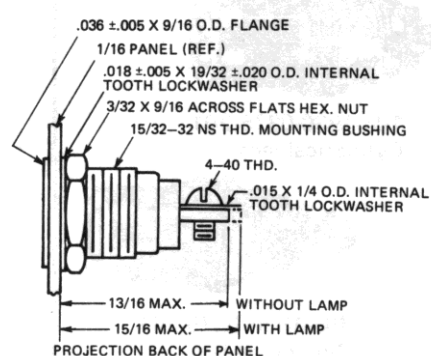
113-2931-200 (with molded filter)

### solder terminal



4-1930-29-201

### screw terminal



4-1830-29-201

### COMPLETE ASSEMBLY PART NUMBERS

4-1930-2900-201

4-1830-2900-201

113-1930-2931-201

113-1830-2931-201

\***Filter colors:** The digit before the three digit part number suffix indicates that the filter is RED. When a color other than red is desired, change this digit as follows:  
Red—1; Green—2; Yellow (amber)—3; Blue—4; Clear (colorless)—7.  
Example: 113-1930-2934-201 (Blue).

Part numbers shown in gray are normally in inventory at your Dialight Distributor.

# AMEYA360

Components Supply Platform

Authorized Distribution Brand :



Website :

Welcome to visit [www.ameya360.com](http://www.ameya360.com)

Contact Us :

➤ Address :

401 Building No.5, JiuGe Business Center, Lane 2301, Yishan Rd  
Minhang District, Shanghai , China

➤ Sales :

Direct    +86 (21) 6401-6692  
Email     amall@ameya360.com  
QQ        800077892  
Skype     ameyasales1 ameyasales2

➤ Customer Service :

Email     service@ameya360.com

➤ Partnership :

Tel        +86 (21) 64016692-8333  
Email     mkt@ameya360.com