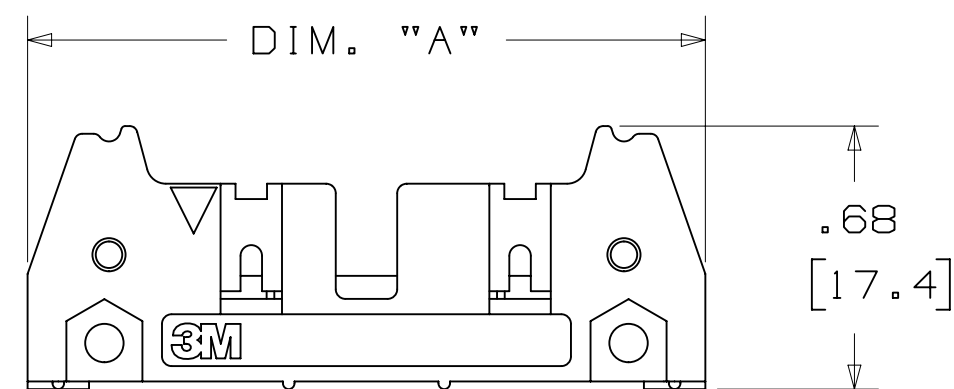


.100" X .100" LATCH/EJECTOR, STRAIGHT AND RIGHT ANGLE



Technical drawing of a mechanical part with dimensions and tolerances:

- Top left dimension: $.573 \pm .010$
- Top left dimension in brackets: $[14.55 \pm 0.25]$
- Left side dimension: $.08$
- Left side dimension in brackets: $[2.0]$
- Right side dimension: (1.07)
- Right side dimension in brackets: $[(27.2)]$

cUL[®] US
UL FILE NO: E68080


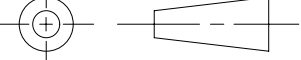
- * MILITARY (WITH 3M'S N3518 POLARIZING KEY) AND CENTERBUMP POLARIZATION.
- * LOW PROFILE.
- * OPTIONAL EJECTOR LATCHES.
- * MOUNTING HOLES FOR SECURING HEADER TO BOARD.
- * THREE WALL SHROUD PROVIDES DESIGN FLEXIBILITY.
- * SOLDER TAIL AND WRAP TAIL OPTIONS.
- * OPTIONAL POLARIZING POSTS AVAILABLE.
- * HIGH TEMPERATURE INSULATOR SUITABLE FOR "NO LEAD" SOLDERING OPERATIONS.
- * SUITABLE FOR REFLOW SOLDERING USING "PASTE IN HOLE" TECHNIQUES.

INSULATOR:
MATERIAL: GLASS FILLED POLYESTER (PCT)
FLAMMABILITY: UL94V-0
COLOR: BLACK
CONTACT:
MATERIAL: COPPER ALLOY
PLATING:
UNDER PLATING: 100 μ " [2.54 μ m] NICKEL-OVERALL
WIPING AREA: 30 μ " [0.76 μ m] AVG. GOLD
SOLDER TAILS: 200 μ " [5.08 μ m] TIN LEAD OR MATTE TIN (SEE ORDERING INFORMATION)
MARKINGS: 3M LOGO, PART IDENTIFICATION NUMBER AND ORIENTATION TRIANGLE

INSULATION RESISTANCE: $>1 \times 10^9 \Omega$ AT 500 V_{DC}
WITHSTANDING VOLTAGE: 1,000V_{RMS} AT SEA LEVEL

TEMPERATURE RATING: -55°C TO 105°C
PROCESS RATING: 260°C, PER J-STD-020C, SINGLE PASS
MOISTURE SENSITIVITY LEVEL: 1 (PER J-STD-020C)

```
- LATCH/EJECTOR SYSTEM:
0 = NO LATCH/EJECTOR INSTALLED
2 = SHORT ROLL PIN LATCH/EJECTORS
3 = LONG ROLL PIN LATCH/EJECTORS
```

DESIGN REFERENCE		NEXT ASSEMBLY		REV	ECO	ISSUE DATE AND DESCRIPTION		DRFT	CHKD
ACCESS CODES <div></div>		 <div></div>		DRFT CASTIGLIONE	DATE AUG 05, 2014	MFG		DATE	
 <div></div>		 <div></div>		CHKD	DATE	ASPLV. R. SCHERER	SEP 05, 2014		
DIVISION Interconnect Solutions		DIVISION CODE EMSD				© 3M COPYRIGHT 2015 This document and the information it contains are 3M property and may not be reproduced or further distributed without 3M permission, or used or disclosed other than for 3M authorized purposes. All rights reserved.			
DO NOT SCALE DRAWING 		TOLERANCES EXCEPT AS NOTED INCHES .00 ± .01 .000 ± .005 .0000 ±				TITLE HEADER, 3-WALL, .100 X .100 LATCH/EJECTOR, STRAIGHT & RA			
THIRD ANGLE PROJECTION		MILLIMETERS 0 ± .3 0.00 ± .13 0.00 ±		CAGE NUMBER D		DRAWING NO. 078-5100-0771-5		REV. G	
MAX. SURFACE ROUGHNESS 1.6		1.6 <input checked="" type="checkbox"/> MARKED ONLY		MODEL 3000 SERIES		DET. STS <input checked="" type="checkbox"/> YES <input checked="" type="checkbox"/> NO		SHT 1 OF 4	

5 THE RECOMMENDED PCB HOLE SIZE FOR THE KINKED TAIL POSITIONS ON THE .112 SOLDER TAIL CONNECTOR IS $\varnothing .035 \pm .002$. (SEE K2 VERSION).

NOTES

REVISION

78-5100-0771-5
DRAWING NUMBER

A

3M™ THREE-WALL HEADER, 3000 SERIES
.100" X .100" LATCH/EJECTOR, STRAIGHT AND RIGHT ANGLE

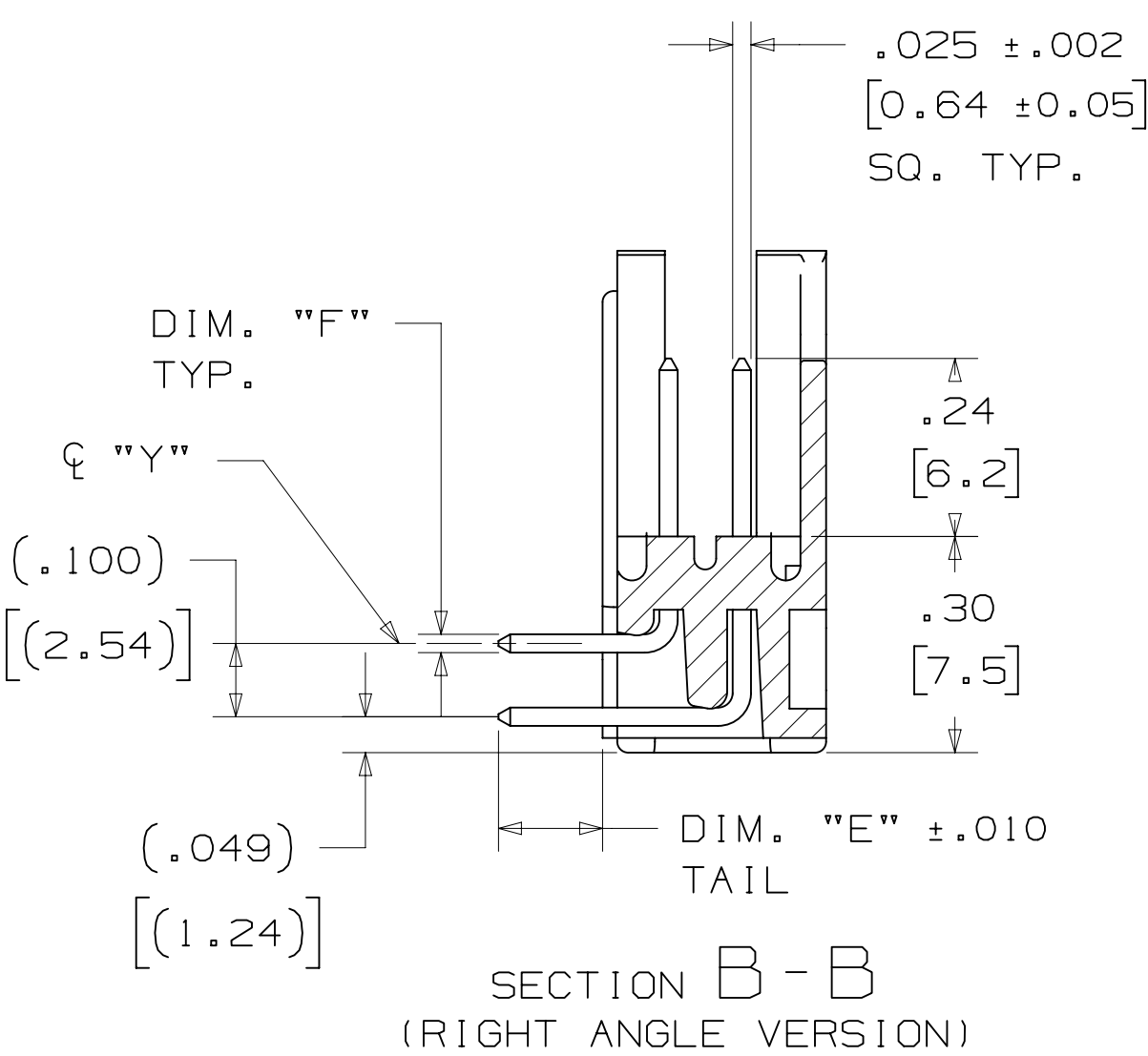
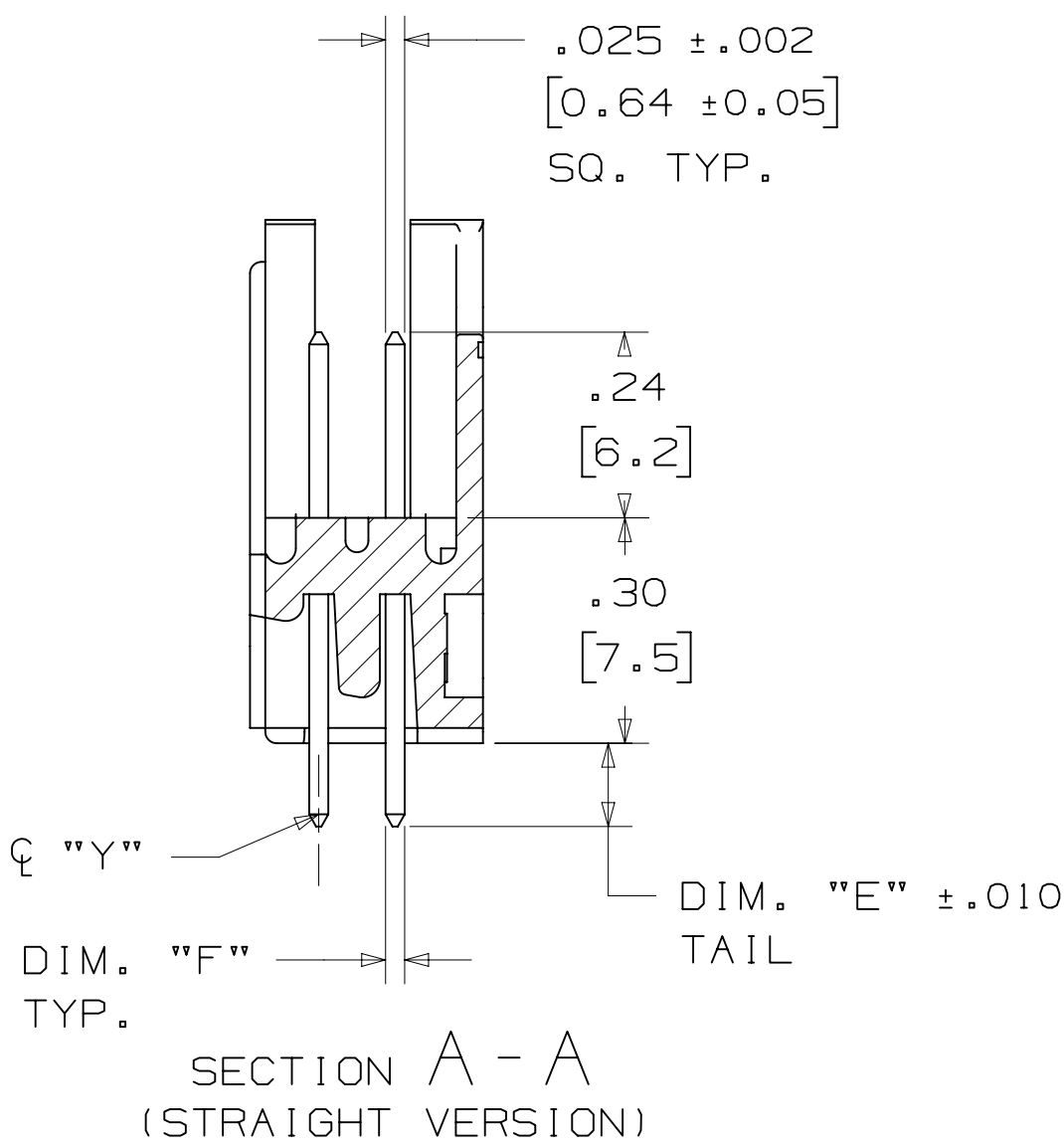
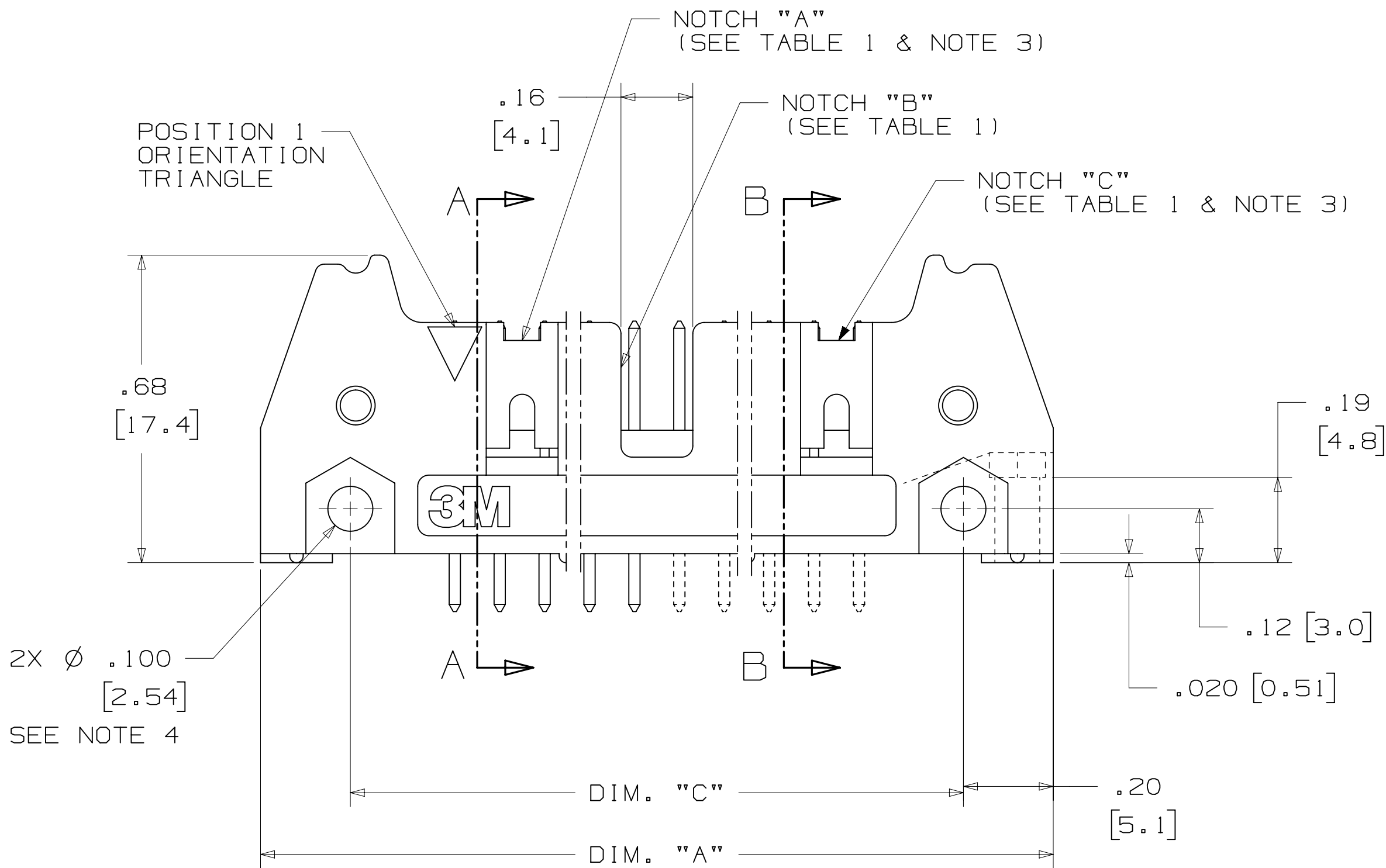
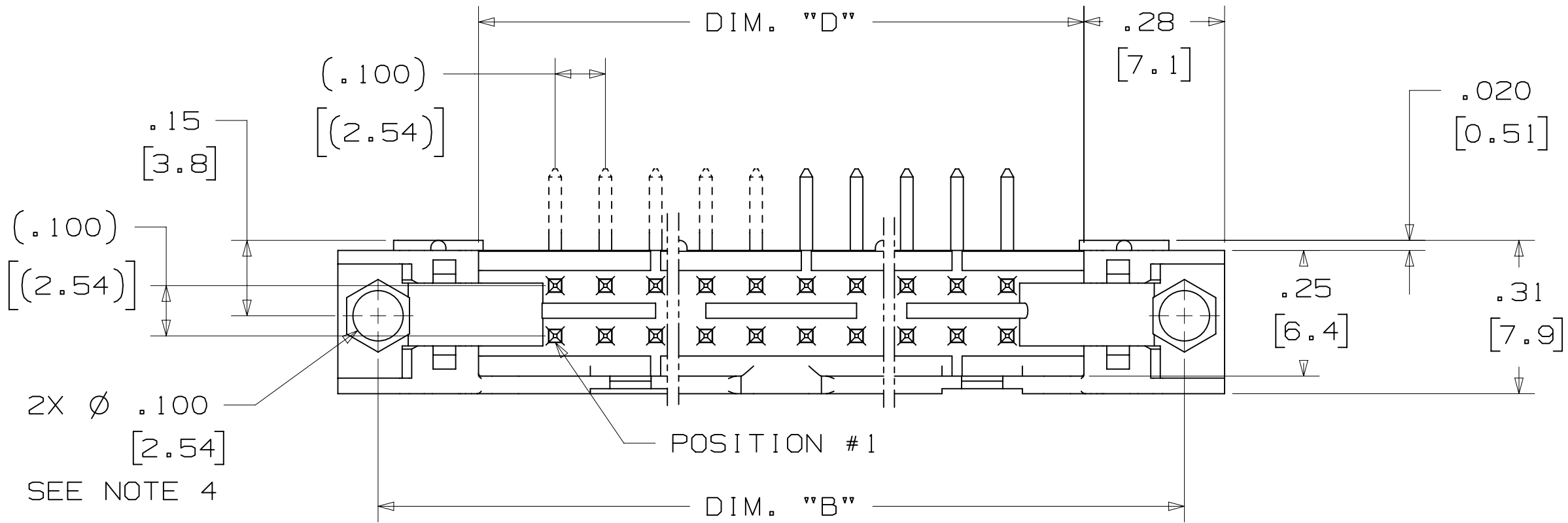


TABLE 1							
PIN QTY.	3M PART NUMBER	DIM. "A"	DIM. "B"	DIM. "C"	DIM. "D"	POLARIZING NOTCHES	PIN QTY.
10	3793	1.26 [32.1]	1.105 [28.04]	.865 [21.97]	.71 [18.0]	BC	10
14	3314	1.46 [37.2]	1.305 [33.12]	1.065 [27.05]	.91 [23.1]	BC	14
16	3408	1.56 [39.7]	1.405 [35.66]	1.165 [29.59]	1.01 [25.6]	ABC	16
20	3428	1.76 [44.8]	1.604 [40.74]	1.365 [34.67]	1.21 [30.7]	ABC	20
26	3429	2.06 [52.4]	1.905 [48.36]	1.665 [42.29]	1.51 [38.3]	ABC	26
34	3431	2.46 [62.6]	2.305 [58.52]	2.065 [52.45]	1.91 [48.5]	ABC	34
40	3432	2.76 [70.2]	2.605 [66.14]	2.365 [60.07]	2.21 [56.1]	ABC	40
50	3433	3.26 [82.9]	3.105 [78.84]	2.865 [72.77]	2.71 [68.8]	ABC	50
60	3372	3.76 [95.6]	3.605 [91.54]	3.365 [85.47]	3.21 [81.5]	ABC	60
64	3764	3.96 [100.7]	3.805 [96.62]	3.565 [90.55]	3.41 [86.6]	ABC	64

TABLE 2						
3M PART NUMBER SUFFIX	CONTACT TAIL	DIM. "E"	PIN CROSS SECTION			DIM. "G"
-1XX2 -2XX2	.062 [1.57] THICK PC BOARD	.112 [2.84]	DIM. "F" .0245+/- .0005 [.622]	DIAGONALS .028+/- .001 [.71]	CORNER RADIUS .0075 REF. [.191]	.035+/- .003 [.89] SEE NOTE 5
-1X03 -2X03	.094 [2.39] TO .125 [3.18] THICK PC BOARD	.155 [3.94]	.0245+/- .0005 [.622]	.028+/- .001 [.71]	.0075 REF. [.191]	.035+/- .003 [.89]



DESIGN REFERENCE		NEXT ASSEMBLY		G 56068		AUG 05,2014		JNC		RS	
REV		ECO		ISSUE DATE AND DESCRIPTION		DRFT		CHKD			
DIP		CASTIGLIONE		DATE		AUG 05,2014		MFG		DATE	
CHKD				DATE				APPR		DATE	
								R. SCHERER		SEP 05,2014	
DIVISION		Interconnect Solutions		DIVISION CODE		EMSD		3M		© 3M COPYRIGHT 2015 3M Center St. Paul, MN 55144 This document and the information it contains are 3M property and may not be reproduced or further distributed without 3M permission, or used or disclosed other than for 3M authorized purposes. All rights reserved.	
DO NOT SCALE DRAWING		SCALE 4/1		TOLERANCES EXCEPT AS NOTED				TITLE		HEADER, 3-WALL, .100 X .100 LATCH/EJECTOR, STRAIGHT & RA	
THIRD ANGLE PROJECTION				INCHES		.00 ±.01 .000 ±.005 .0000 ±		CAGE NUMBER		D 78-5100-0771-5	
INTERPRET PER ASME Y14.5 - 2009				MILLIMETERS		0 ± .0 ±.3 .00 ±.13 .000 ±		DRAWING NO.		78-5100-0771-5	
MAX SURFACE ROUGHNESS				ANGLES				REV.		G	
MARKED ONLY								MODEL		3000 SERIES	
								DET		LISTS	
								YES		NO	
								SHT		2 OF 4	

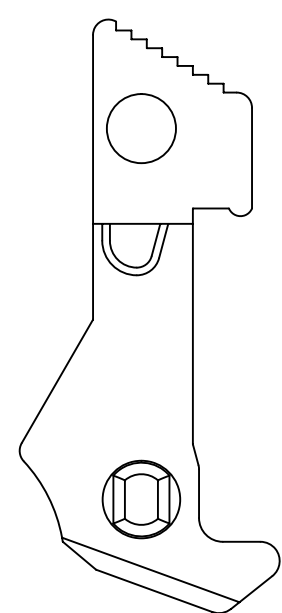
.100" X .100" LATCH/EJECTOR, STRAIGHT AND RIGHT ANGLE




THIS SPEC SHEET DETAILS OUR STANDARD OFFERING.

BOTH SNAP-IN AND ROLL PIN LATCHES MAY BE ORDERED SEPARATELY. SNAP-IN AND ROLL PIN STYLE LATCHES ARE DIMENSIONALLY AND FUNCTIONALLY EQUIVALENT. IF ORDERING SNAP-IN OR ROLL PIN STYLE LATCHES SEPARATELY, PLEASE USE THE BELOW CHART.

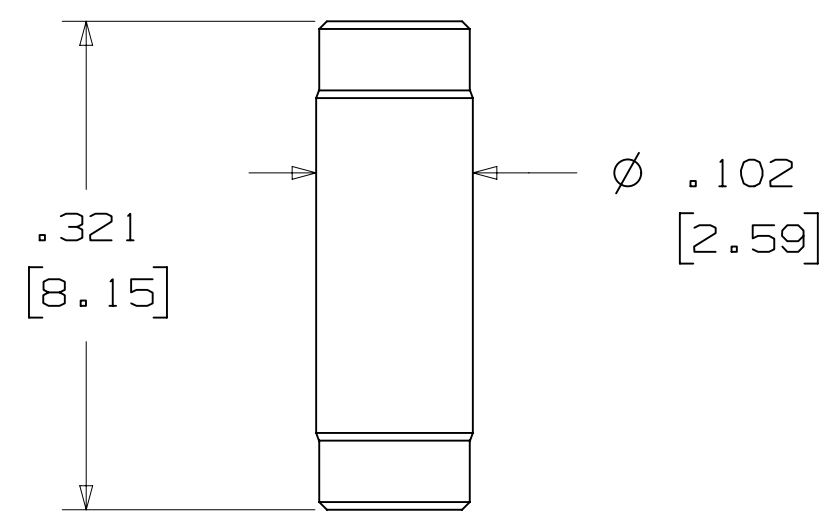
```
* SELECTIVE PIN REMOVAL (ATA OR OTHER COMPATABILITY)
* WIRE WRAP TAILS STYLE
```



SHORT


 (.03)
 [(.0.8)]
 TYP.

NOTE:
SNAP-IN LATCHES CAN ONLY BE ORDERED
SEPARATELY AND ARE THE CUSTOMERS
RESPONSIBILITY TO INSTALL.



NOTE:
INSERT POST INTO ONE MOUNTING
HARDWARE HOLE ON BOTTOM OF HEADER.
SET POST TO PROTRUDE .115 [2.92]

2500 & 3000 SERIES SHROUDED HEADER					
TOTAL NO. OF PINS	NO. OF TAILS KINKED	POSITIONS KINKED			
10	4	3	4	7	8
14	4	3	4	11	12
16	4	3	4	13	14
20	4	3	4	17	18
26	4	3	4	23	24
34	4	7	8	27	28
40	4	7	8	33	34
50	4	7	8	43	44
60	4	11	12	49	50
64	4	11	12	53	54

KINKED TAIL DETAIL:

- KINK IS LOCATED .05" BELOW BOTTOM SURFACE OF PLASTIC.
- EXTERNAL RADIUS OF KINK TOWARD PART CENTERLINE.

Technical drawing of a 3M Breakaway Tab. The drawing includes a top view and a side view.


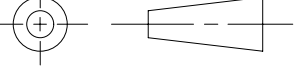
Top View:

- Feature: BREAKAWAY TAB
- Logo: 3M
- Dimension: .34 (8.5) (Height)
- Dimension: .15 (3.8) (Width)

Side View:

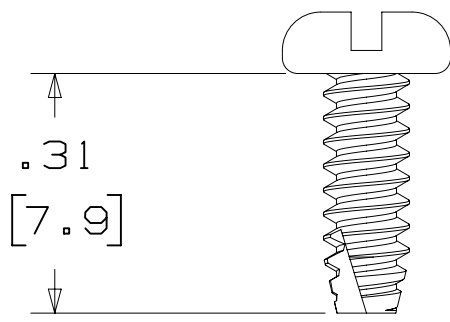
- Dimension: .09 (2.3) (Thickness)
- Dimension: DIM. "A" (Length of central opening)

NOTE:
#2216 B/A SCOTCHWELD CAN BE USED TO
ADHERE KEYS.

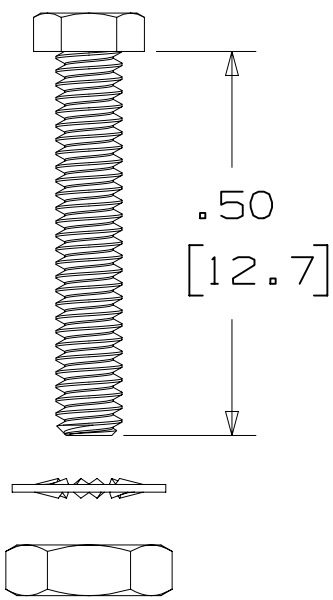
G 5608		AUG 05, 2014		JNC	RS
REVISED AND REDRAWN					
REV ECO		ISSUE DATE AND DESCRIPTION		DRFT	CHKD
BPR CASTIGLIONE		DATE AUG 05, 2014		INFO	DATE
CHKD		DATE		APPN R. SCHERER	DATE SEP 05, 2014
DIVISION		DIVISION CODE		© 3M COPYRIGHT 2015	
Interconnect Solutions		EMSD		 This document and the information it contains are 3M property and may not be reproduced or further distributed without the 3M permission, or used or disclosed other than for 3M authorized purposes. All rights reserved.	
DO NOT SCALE DRAWING		TOLERANCES EXCEPT AS NOTED		3M Center St. Paul, MN 55144	
SCALE 4/1		INCHES		TITLE	
 THIRD ANGLE PROJECTION		.0 ± .01 .000 ± .005 .0000 ±		HEADER, 3-WALL, .100 X .100 LATCH/EJECTOR, STRAIGHT & RA	
INTERPRET PER ASME Y14.5 - 2009		MILLIMETERS		CAGE NUMBER	
MAX SURFACE ROUGHNESS MARKED SURFACES <input checked="" type="checkbox"/> UNMARKED ONLY		.0 ± .3 .00 ± .13 .000 ±		SIZE DRAWING NO. D 78-5100-0771-5	
<input checked="" type="checkbox"/> MARKED ONLY <input type="checkbox"/> UNMARKED ONLY		ANGLES		REV. G	
		MODEL 3000 SERIES		DET. LISTS <input checked="" type="checkbox"/> YES <input checked="" type="checkbox"/> NO SHT 3 OF 4	

3M™ THREE-WALL HEADER, 3000 SERIES
.100" X .100" LATCH/EJECTOR, STRAIGHT AND RIGHT ANGLE

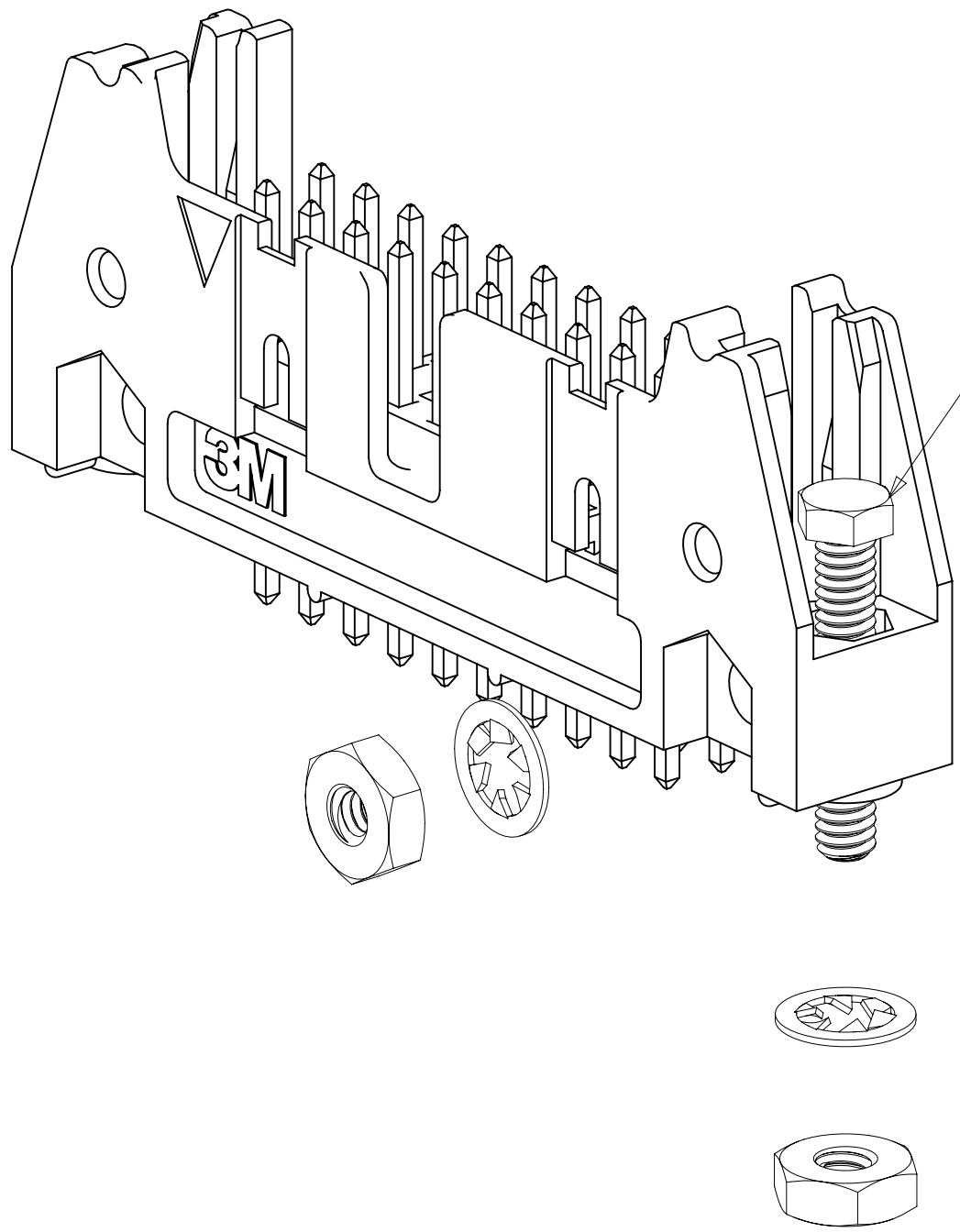
MOUNTING HARDWARE



3341-5
(INSTALL FROM BOTTOM OF BOARD)
PANHEAD THREAD CUTTING SCREW:
#4-24 X 5/16"
TYPE: USA STD BT, FEDERAL B6
MATERIAL: STAINLESS STEEL



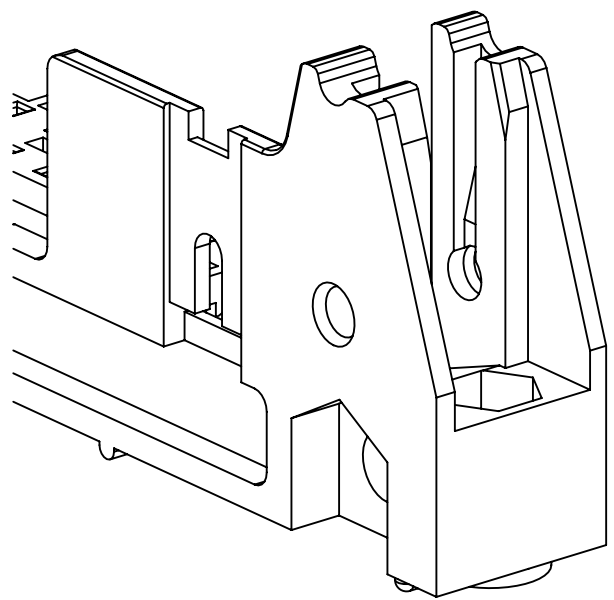
3341-6
HEX HEAD BOLT, NUT AND WASHER:
BOLT - #2-56 X 1/2"
MATERIAL: STAINLESS STEEL



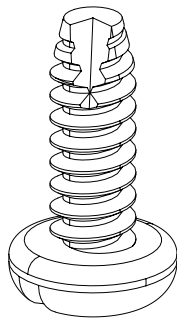
STRAIGHT VERSION INSTALL
(MUST BE INSERTED PRIOR TO
LATCH INSTALL)

RIGHT ANGLE VERSION INSTALL

3341-6
#2-56 NUT AND BOLT
TORQUE FOR EACH BOLT: 1.25 - 3.125 INCH LBS.



#4-24 TYPE BT SELF THREADING SCREW
WHEN USING LATCHES, MAXIMUM LENGTH
OF SCREW IS .250 INCHES PLUS
THICKNESS OF THE BOARD.
TORQUE FOR EACH SCREW IS 3-5 INCH LBS.



3341-5

DESIGN REFERENCE		NEXT ASSEMBLY		REV	ECO	ISSUE DATE AND DESCRIPTION		DRFT	CHKD
XREF		DPR		CASTIGLIONE	DATE	AUG 05,2014	MFG	DATE	
DIVISION		DIVISION CODE		CHKD	DATE		APPR	DATE	
Interconnect Solutions		EMSD					R. SCHERER	SEP 05,2014	
DO NOT SCALE DRAWING		SCALE 4 1		TOLERANCES EXCEPT AS NOTED		3M			
THIRD ANGLE PROJECTION		INCHES .00 .01 .000 .0000		MILLIMETERS 0 .0 .00 .000		TITLE			
INTERPRET PER ASME Y14.5 - 2009		MAX SURFACE ROUGHNESS		CAGE NUMBER		HEADER, 3-WALL, .100 X .100 LATCH/EJECTOR, STRAIGHT & RA			
MARKED ONLY		ANGLES		MODEL		3000 SERIES			
						REV. G			
						DET. YES NO SHT 4 OF 4			

Authorized Distribution Brand :



Website :

Welcome to visit www.ameya360.com

Contact Us :

➤ Address :

401 Building No.5, JiuGe Business Center, Lane 2301, Yishan Rd
Minhang District, Shanghai , China

➤ Sales :

Direct +86 (21) 6401-6692

Email amall@ameya360.com

QQ 800077892

Skype ameyasales1 ameyasales2

➤ Customer Service :

Email service@ameya360.com

➤ Partnership :

Tel +86 (21) 64016692-8333

Email mkt@ameya360.com