

### Directional Couplers In-Line Style

#### Applications

- Subassemblies
- Lab Systems
- Leveling Loops
- Power Monitoring
- Test and Calibration

#### Features

- Military Grade
- 0.25 – 0.5 GHz
- In-Line Configuration
- Connectors Per MIL-C-39012
- Rugged Aluminum Housing
- Built in Termination
- Meets MIL-E-5400 Class 3 Requirements

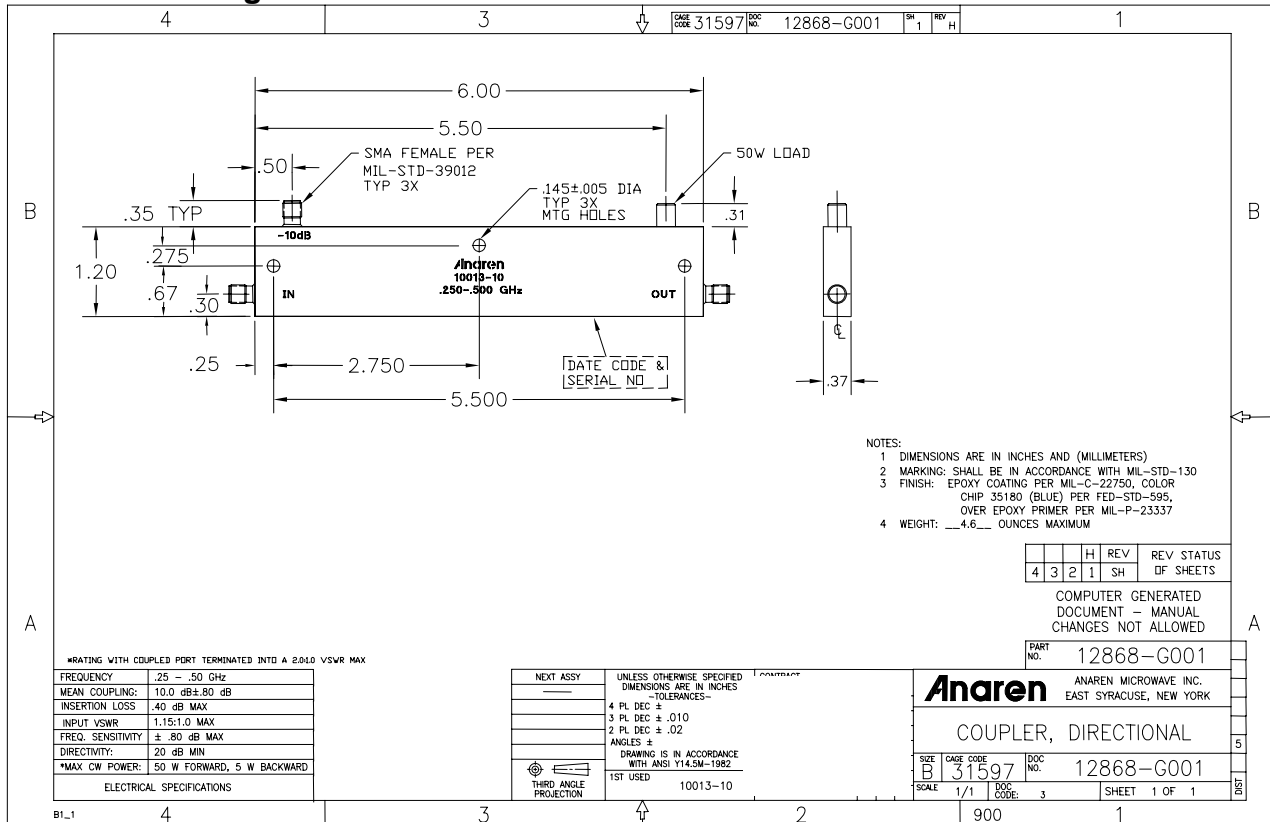


**NOTES:** The power rating applies when coupled port VSWR is 2.0:1 or less.

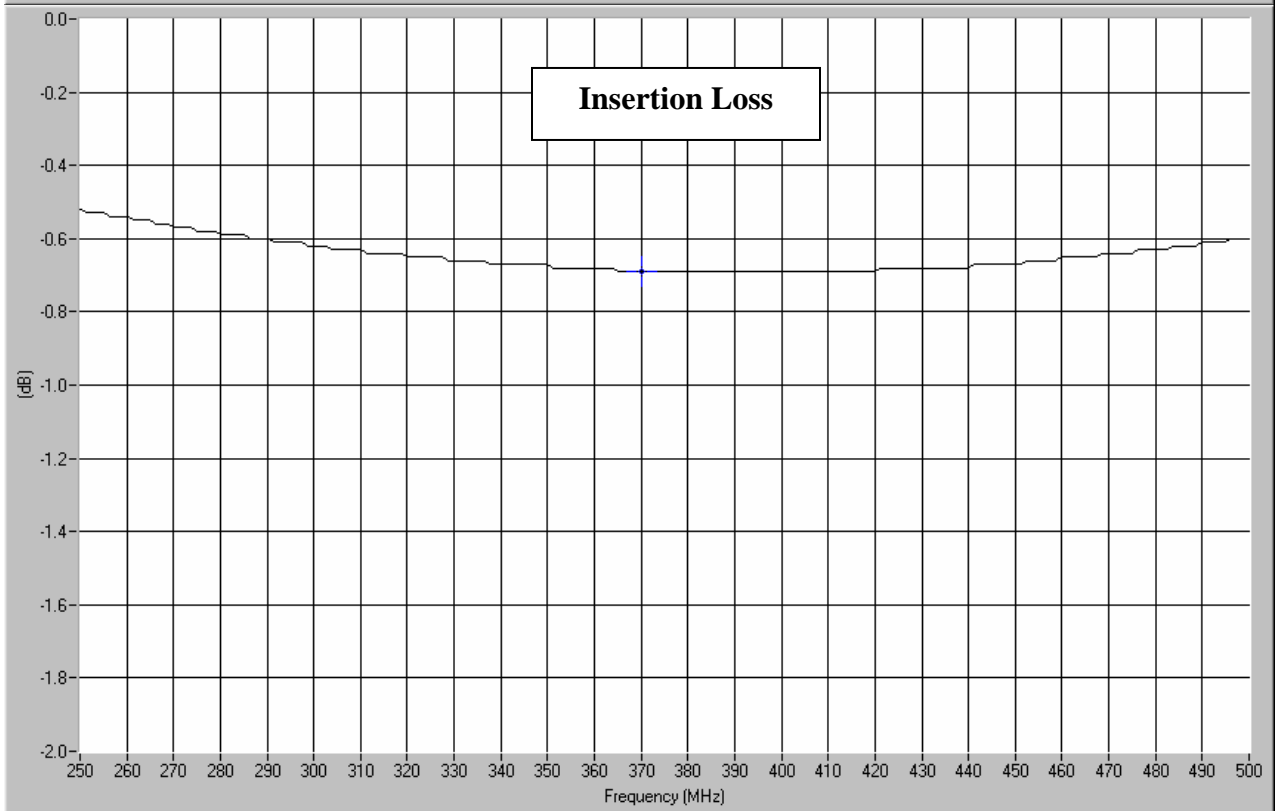
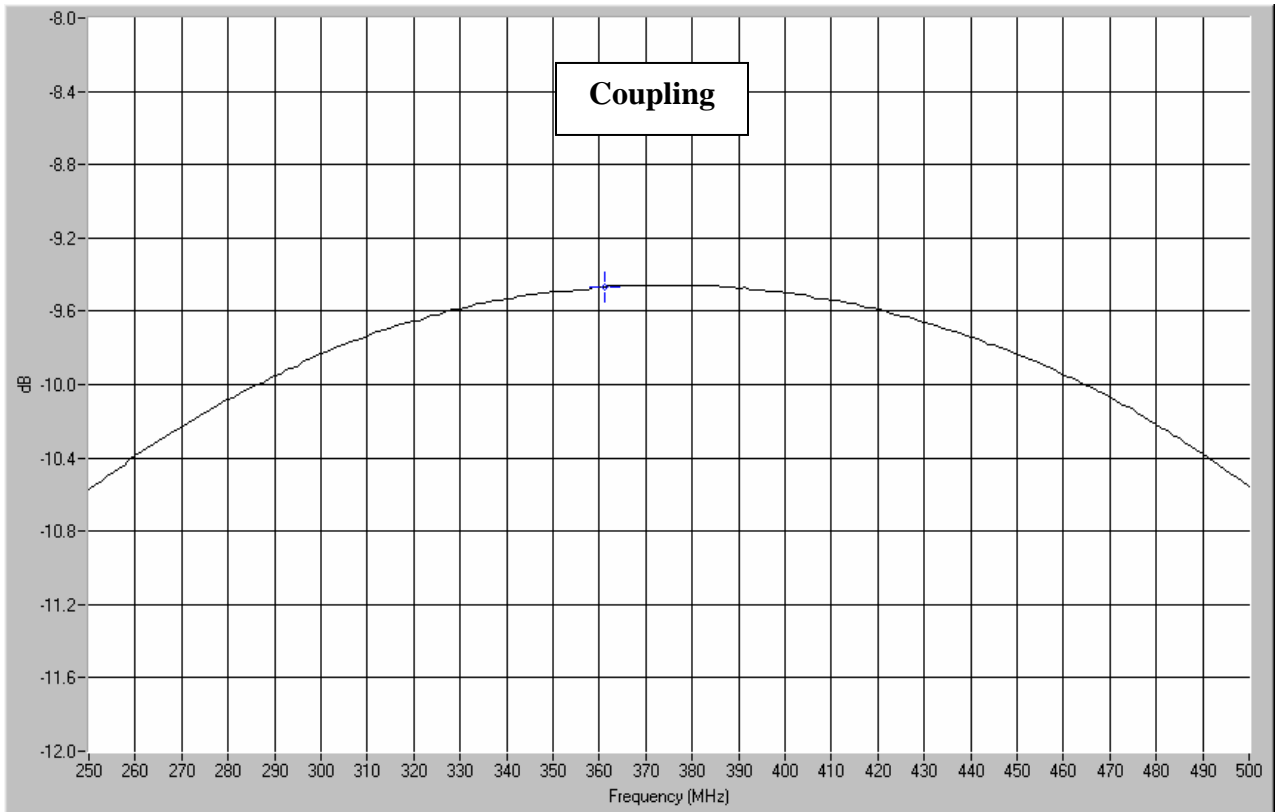
Higher power can be handled with a lower VSWR termination

Electrical and Mechanical Specifications subject to change without notice

#### Outline Drawing

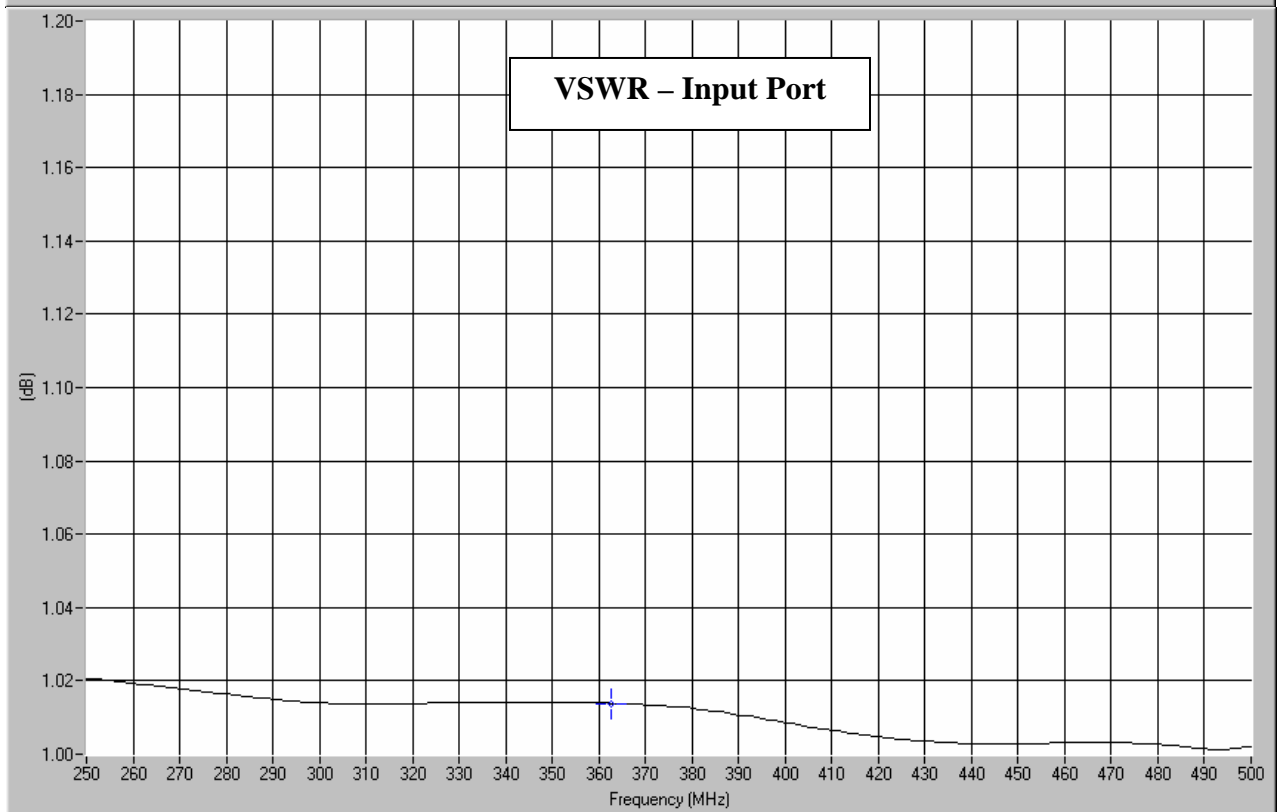
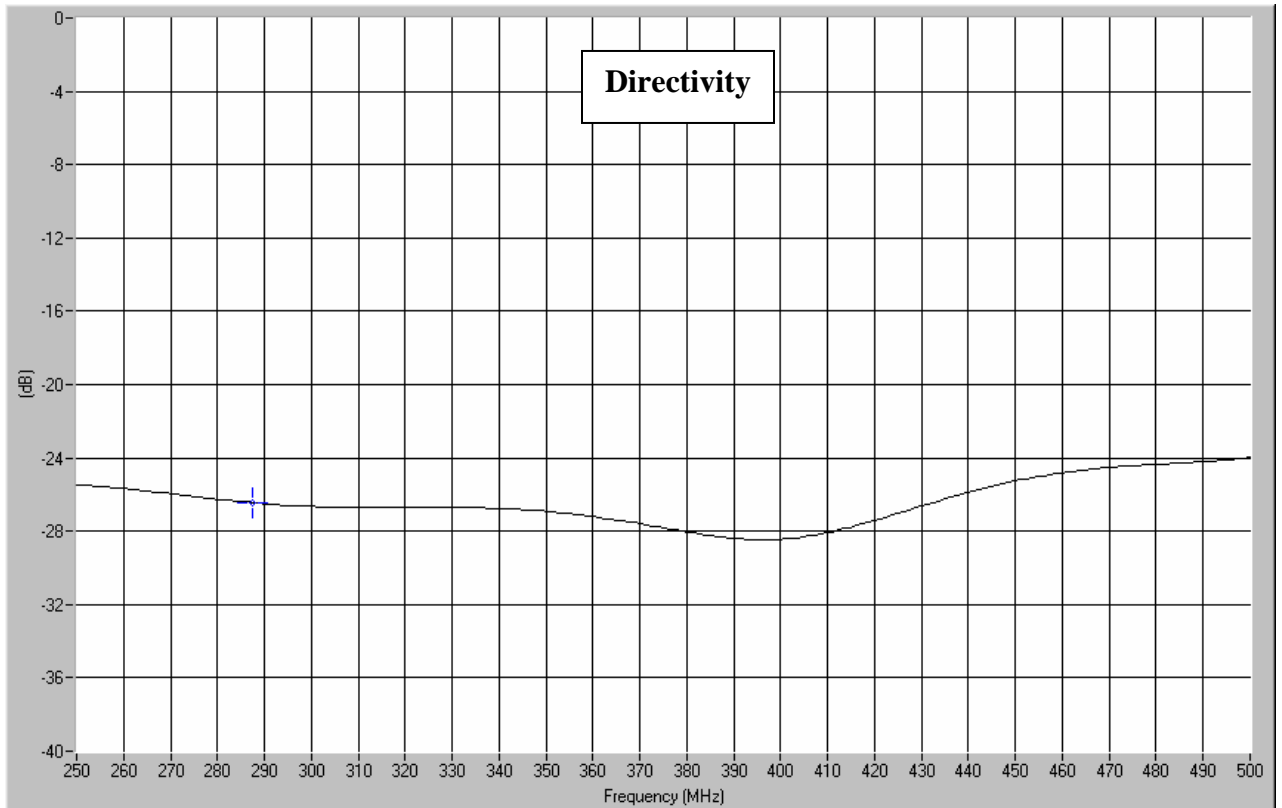


Typical Test Data Plots



USA/Canada: (315) 432-8909  
 Toll Free: (800) 411-6596  
 Europe: +44 2392-232392

### Typical Test Data Plots



# AMEYA360

## Components Supply Platform

Authorized Distribution Brand :



Website :

Welcome to visit [www.ameya360.com](http://www.ameya360.com)

Contact Us :

➤ Address :

401 Building No.5, JiuGe Business Center, Lane 2301, Yishan Rd  
Minhang District, Shanghai , China

➤ Sales :

Direct +86 (21) 6401-6692

Email [amall@ameya360.com](mailto:amall@ameya360.com)

QQ 800077892

Skype [ameyasales1](#) [ameyasales2](#)

➤ Customer Service :

Email [service@ameya360.com](mailto:service@ameya360.com)

➤ Partnership :

Tel +86 (21) 64016692-8333

Email [mkt@ameya360.com](mailto:mkt@ameya360.com)