



Micro Commercial Components



Micro Commercial Components
20736 Marilla Street Chatsworth
CA 91311

Phone: (818) 701-4933

Fax: (818) 701-4939

UMH2N

Features

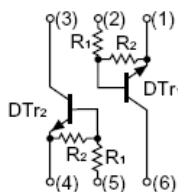
- Halogen free available upon request by adding suffix "-HF"
- Two DTC144E chips in one package
- Mounting possible with SOT-363 automatic mounting machines.
- Transistor elements are independent, eliminating interference.
- Lead Free Finish/RoHS Compliant ("P" Suffix designates RoHS Compliant. See ordering information)
- Epoxy meets UL 94 V-0 flammability rating
- Moisture Sensitivity Level 1

Mechanical Data

- Case: SOT-363, Molded Plastic
- Polarity: See Diagram (NPN*2)

Maximum Ratings @ 25°C Unless Otherwise Specified

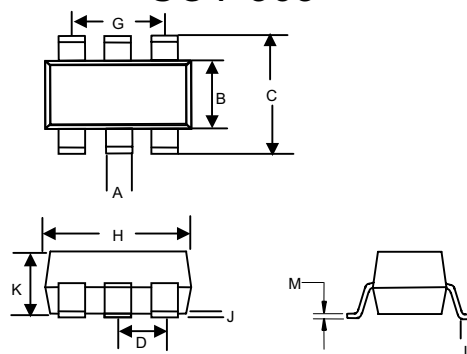
Symbol	Parameter	Value	Units
OFF CHARACTERISTICS			
V_{CC}	Supply Voltage	50	V
V_i	Input voltage	-10 to +40	V
$I_{C(MAX)}$	Output current	100	mA
P_D	Power dissipation	150	mW
T_J	Junction temperature	150	°C
T_{stg}	Storage temperature	-55~+150	°C



Marking: H2

Dual Transistors

SOT-363



DIM	INCHES		MM		NOTE
	MIN	MAX	MIN	MAX	
A	.006	.014	0.15	0.35	
B	.045	.053	1.15	1.35	
C	.085	.096	2.15	2.45	
D	.026		0.65Nominal		
G	.047	.055	1.20	1.40	
H	.071	.087	1.80	2.20	
J	---	.004	---	0.10	
K	.035	.043	0.90	1.10	
L	.010	.018	0.26	0.46	
M	.003	.006	0.08	0.15	

UMH2N



Micro Commercial Components

Electrical Characteristics (T_a=25°C)

Parameter	Symbol	Test conditions	Min	Typ	Max	Unit
Input turn-on voltage	V _{i(on)}	V _{CC} =0.3V, I _O =2mA	3			V
Input cut-off voltage	V _{i(off)}	V _{CC} =5V, I _O =100μA			0.5	V
Output voltage	V _{O(on)}	I _O =10mA, I _i =0.5mA			0.3	V
Input cut-off current	I _i	V _i =5V			0.18	mA
Output cut-off current	I _{O(off)}	V _{CC} =50V, V _i =0			0.5	μA
DC current gain	G _i	V _O =5V, I _O =5mA	68			
Transition frequency	f _T	V _O =10V, I _O =5mA, f=100MHz		250		MHz
Input resistance	R ₁		32.9		61.1	KΩ
Resistance ratio	R ₂ /R ₁		0.8		1.2	

UMH2N

Typical Characteristics

• M • C • C •

TM

Micro Commercial Components

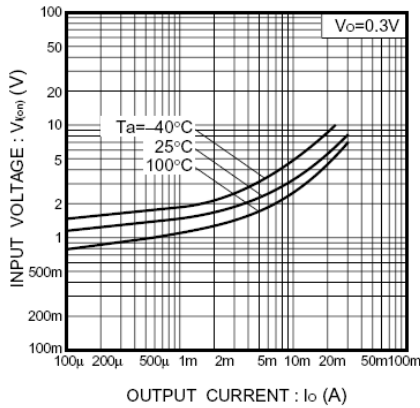


Fig.1 Input voltage vs. output current (ON characteristics)

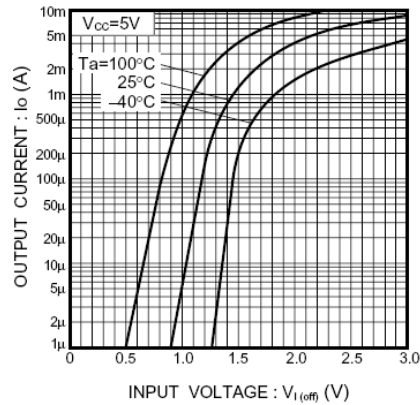


Fig.2 Output current vs. input voltage (OFF characteristics)

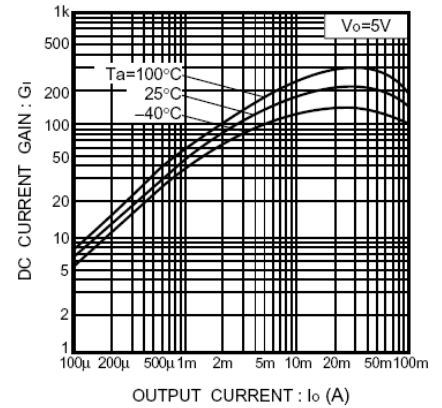


Fig.3 DC current gain vs. output current

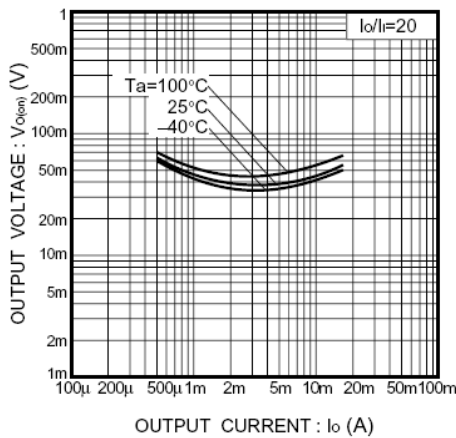


Fig.4 Output voltage vs. output current

Ordering Information :

Device	Packing
Part Number-TP	Tape&Reel; 3Kpcs/Reel

IMPORTANT NOTICE

Micro Commercial Components Corp. reserves the right to make changes without further notice to any product herein to make corrections, modifications , enhancements , improvements , or other changes . **Micro Commercial Components Corp .** does not assume any liability arising out of the application or use of any product described herein; neither does it convey any license under its patent rights ,nor the rights of others . The user of products in such applications shall assume all risks of such use and will agree to hold **Micro Commercial Components Corp .** and all the companies whose products are represented on our website, harmless against all damages.

LIFE SUPPORT

MCC's products are not authorized for use as critical components in life support devices or systems without the express written approval of Micro Commercial Components Corporation.

CUSTOMER AWARENESS

Counterfeiting of semiconductor parts is a growing problem in the industry. Micro Commercial Components (MCC) is taking strong measures to protect ourselves and our customers from the proliferation of counterfeit parts. MCC strongly encourages customers to purchase MCC parts either directly from MCC or from Authorized MCC Distributors who are listed by country on our web page cited below. Products customers buy either from MCC directly or from Authorized MCC Distributors are genuine parts, have full traceability, meet MCC's quality standards for handling and storage. **MCC will not provide any warranty coverage or other assistance for parts bought from Unauthorized Sources.** MCC is committed to combat this global problem and encourage our customers to do their part in stopping this practice by buying direct or from authorized distributors.

AMEYA360

Components Supply Platform

Authorized Distribution Brand :



Website :

Welcome to visit www.ameya360.com

Contact Us :

➤ Address :

401 Building No.5, JiuGe Business Center, Lane 2301, Yishan Rd
Minhang District, Shanghai , China

➤ Sales :

Direct +86 (21) 6401-6692

Email amall@ameya360.com

QQ 800077892

Skype ameyasales1 ameyasales2

➤ Customer Service :

Email service@ameya360.com

➤ Partnership :

Tel +86 (21) 64016692-8333

Email mkt@ameya360.com