

---

## Security door keypad controller

---

### Introduction

This document describes the operation of a keypad controller for use in security door applications. The aim is to assist in the development of a keypad decoding system and to display associated information through LEDs for all necessary actions such as power on, door open and error. The entire system has been developed to target low-end and low-cost application areas and has been realized with the help of the ST7FLITE39F2 microcontroller. A useful additional feature is the support of system protection from physical intrusion, using the STM1403.

The associated evaluation board (order code STEVAL-IAS001V1) aims to display the capabilities of ST's general purpose microcontroller to fit the market segment of home automation and security, keeping the system cost as low as possible.

The board can operate in 2 modes:

- User (stand-alone) mode
- Administrator mode
  - through board
  - through PC Graphical User Interface

System operation in the various modes is explained through the document sections. When the board is connected to the power supply the system enters the user configuration mode. Administrator mode can be accessed through the use of a PC, where SCI communication is set up and used between the PC and the board through the RS232.

At the time of manufacturing an additional board has been connected to allow in-circuit programming of the microcontroller. The two can be easily disconnected so that the keypad controller for the security door evaluation board can be used independently.

To summarize, the key features of the evaluation board include:

- 4x3 key matrix
- 3 LEDs (green for power, red for error and yellow for magnetic lock)
- 4 jumpers for physical intrusion detection with battery back-up and buzzer
- On-board SPI EEPROM for event logging
- On-board RS232 driver to interface with the PC
- Power supply adaptor (3.4V - 19V)
- Embedded in-circuit programming capability

# Contents

<b>1</b>	<b>Getting started</b>	<b>4</b>
1.1	System requirements	4
1.2	Package contents	4
1.3	Hardware installation	4
1.4	Software installation	6
<b>2</b>	<b>Running the security door application</b>	<b>10</b>
2.1	User or standalone mode	10
2.1.1	Powering on the system	10
2.1.2	Default system settings	10
2.1.3	Valid user code	11
2.1.4	Door open	11
2.1.5	Physical intrusion	11
2.1.6	Error conditions in user mode	11
2.1.7	User-code tampering	12
2.2	Administrator mode through board	12
2.2.1	Add new user code	12
2.2.2	Delete user code	13
2.3	Administrator password reset through board	14
2.4	Administrator mode through PC graphical user interface	15
2.4.1	Connecting to the PC	15
2.4.2	Powering on the board	16
2.4.3	The first GUI window - login GUI mode	16
2.4.4	Communication setting	16
2.4.5	Communication error	17
2.4.6	Features supported by the GUI	18
2.4.7	Logoff GUI mode	19
2.4.8	Automatic Logoff from GUI mode (through watchdog)	19
<b>Appendix A</b>	<b>Abbreviations</b>	<b>20</b>
<b>Appendix B</b>	<b>Demonstration board schematic</b>	<b>21</b>
<b>Appendix C</b>	<b>Bill of materials</b>	<b>22</b>

**Appendix D Troubleshooting . . . . . 25**

    D.1 Communication error. . . . . 25

    D.2 Time-out error . . . . . 25

    D.3 Delete all users . . . . . 25

**3 Revision history . . . . . 26**

# 1 Getting started

## 1.1 System requirements

The system can operate in standalone mode by powering it externally using a power supply adaptor (3.4V to 19V). For the system to be connected to a PC for administrator use, a recent version of Windows, such as Windows 2000 or Windows XP must be installed on the PC.

*Note:* The version of the Windows OS installed on your PC can be determined by clicking on the **System** icon in the **Control Panel**.

## 1.2 Package contents

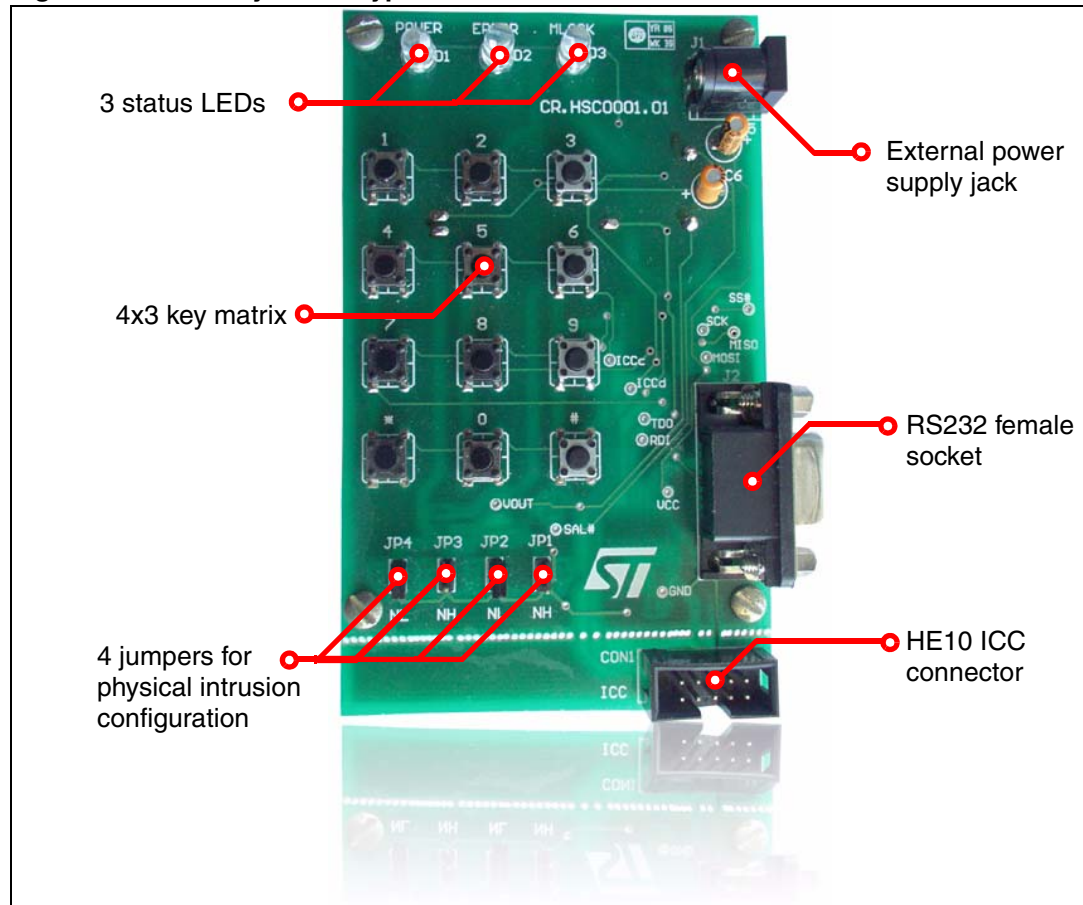
The keypad controller for the security door evaluation package is orderable with the following order code: **STEVAL-IAS001V1**. It includes:

- Hardware
  - One demonstration board
- Software
  - PC executable software to be used along with the demonstration board
- Documentation
  - User manual

The firmware source code (C language) is not included in the evaluation package. Please contact your ST sales office to request it.

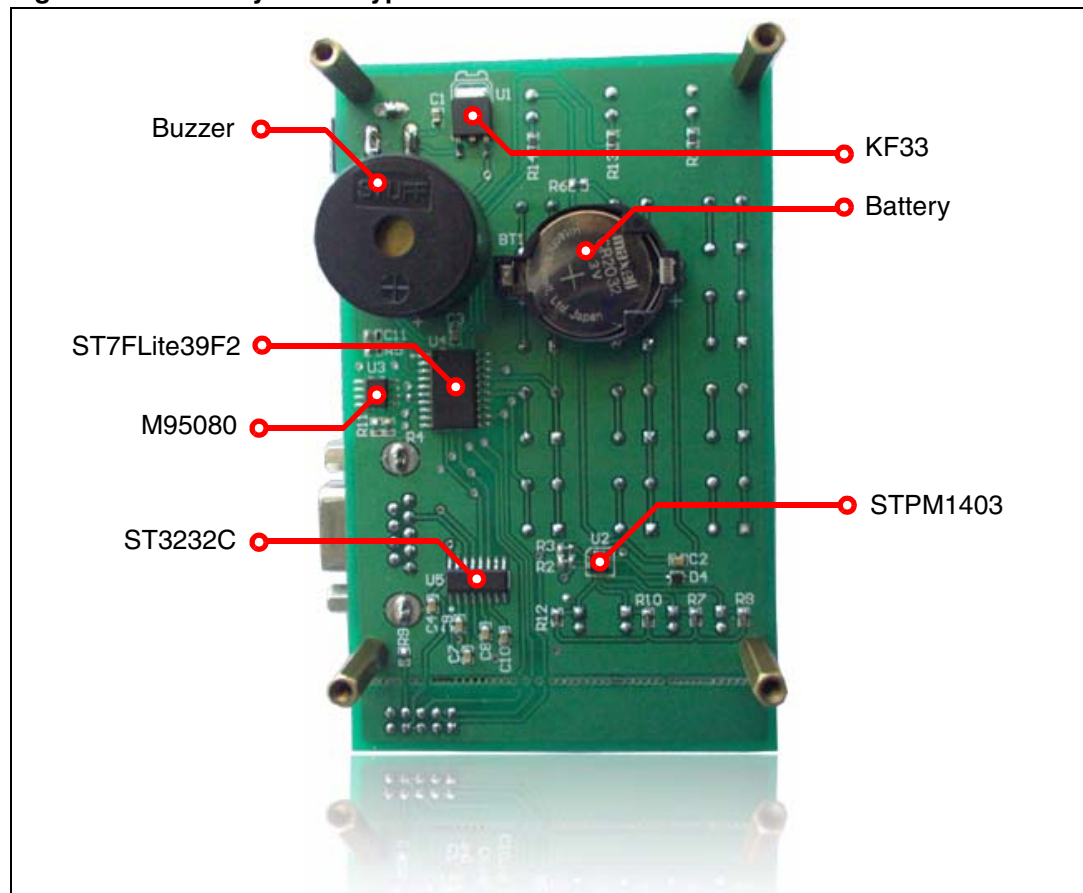
## 1.3 Hardware installation

The demonstration board can be powered through an external power supply using a DC adaptor (3.4V to 19V). It is not included within the ST evaluation package.

**Figure 1. Security door keypad controller - front view**

The major components present on the *front* of the board are (see [Figure 1](#)):

1. An external power jack for the DC adaptor
2. 3 status LEDs for power, error and magnetic lock
3. 4x3 key matrix to enter the user code
4. 4 jumpers for physical intrusion detection
5. An RS232 female socket
6. An HE10 connector for ICC programming

**Figure 2. Security door keypad controller - back view**

The major components present on the *back* of the board are (see [Figure 2](#)):

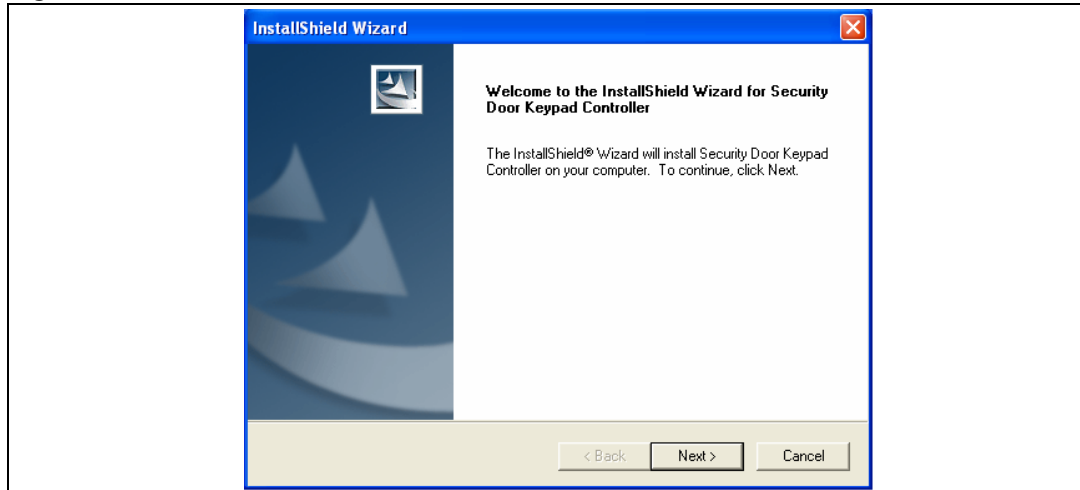
1. A buzzer for physical intrusion detection
2. A coin-type battery as back-up for the tamper detection device in the event of power failure
3. KF33B voltage regulator
4. ST7FLITE39F2 microcontroller
5. M95080 EEPROM for data logging
6. STM1403 tamper detection device
7. ST3232C RS232 driver

## 1.4 Software installation

To install the PC GUI, follow the steps described below:

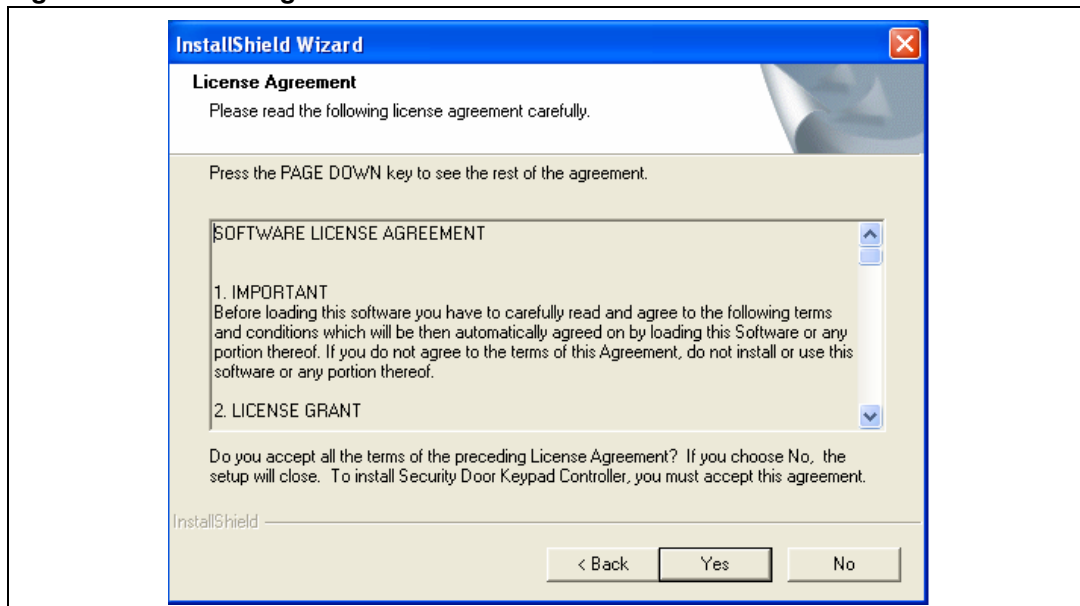
1. Double-click the Security Door executable icon. The window shown in [Figure 3](#) opens.

**Figure 3. Installation window**



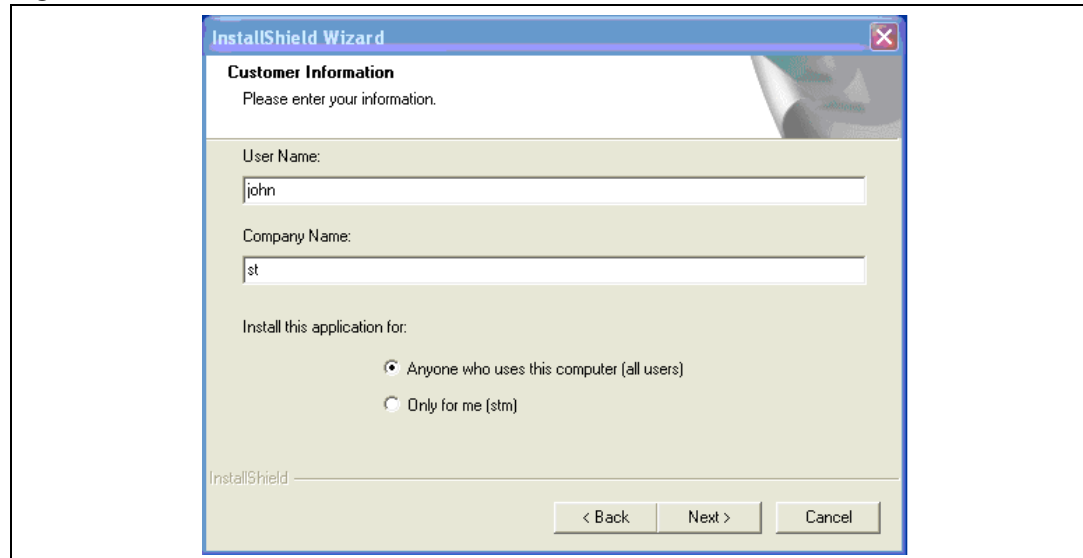
2. Click **Next** to move to the License Agreement window shown in [Figure 4](#). Read the license and if you accept it, click **Yes**.

**Figure 4. License agreement**



3. The Customer Information window opens as shown in [Figure 5](#). Enter the relevant information and click **Next**.

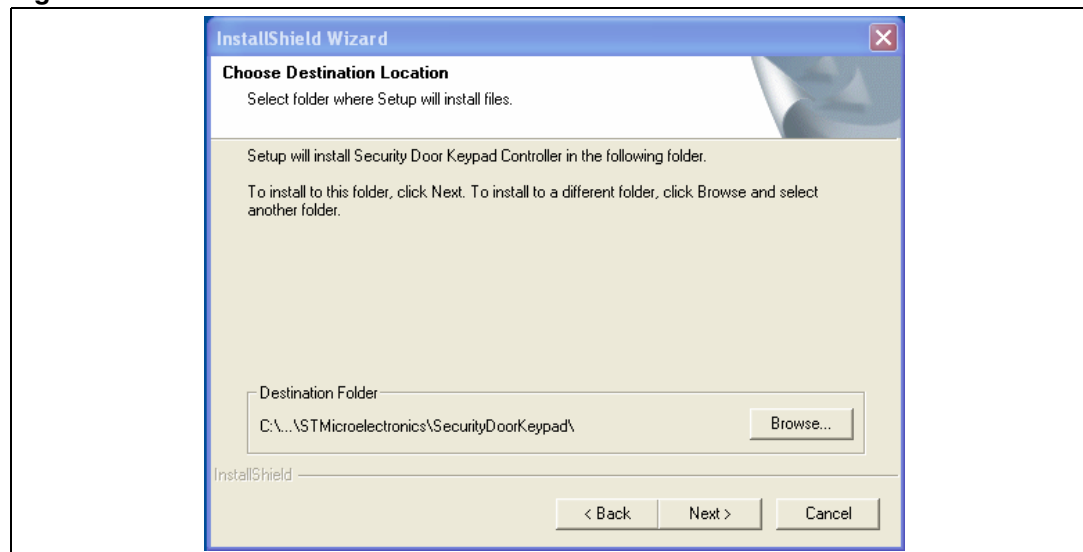
**Figure 5. Customer Information**



4. Now select the folder in which you want to install the software (see [Figure 6](#)). By default the software is installed to the following path:

*C:\Program Files\STMicroelectronics\SecurityDoorKeypad*

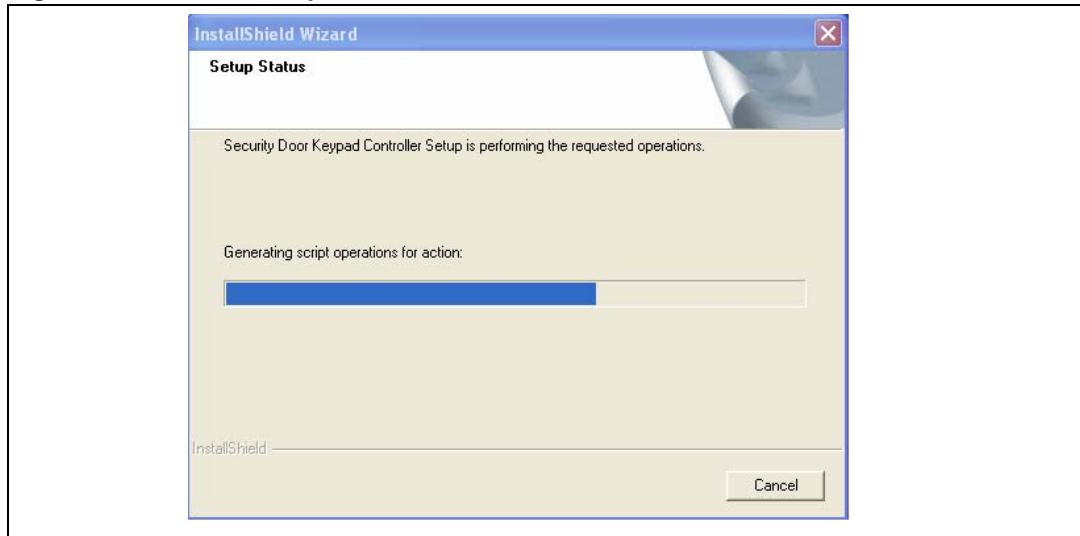
**Figure 6. Select installation folder**





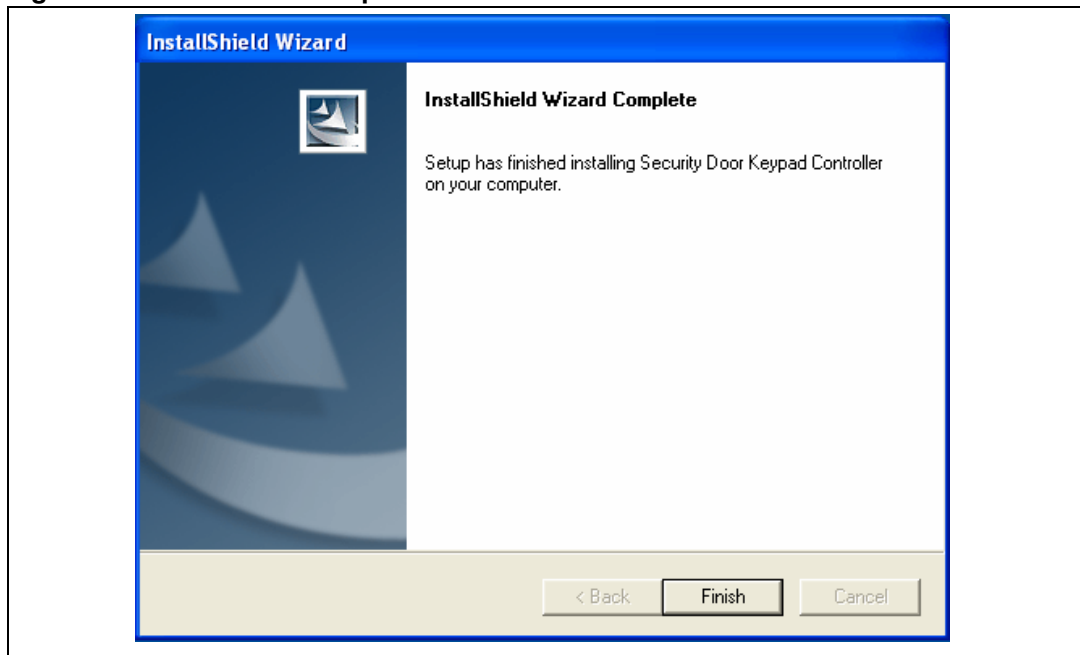
5. After selecting the destination folder, click **Next**. The software installation then starts, see [Figure 7](#).

**Figure 7. Installation process**



6. On completion of the installation process, the window shown in [Figure 8](#) opens. Click the **Finish** button.

**Figure 8. Installation complete**



You will find the software and Help Files have been placed in the installation folder. Also, a shortcut is available in the Windows **Start** Menu and on the Desktop.

## 2 Running the security door application

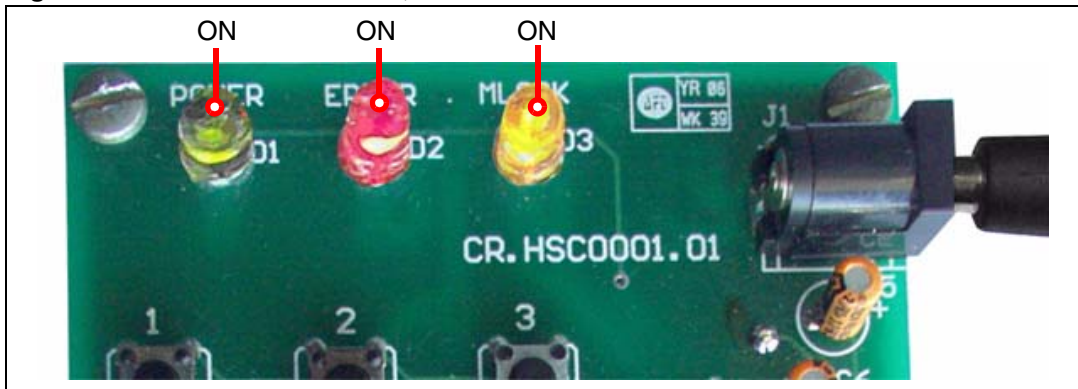
### 2.1 User or standalone mode

#### 2.1.1 Powering on the system

This is an easy-to-use system. As soon as you plug in the DC power supply (3.4V to 19V) through the adaptor the system is up and running.

All the three status LEDs glow (see [Figure 9](#)) until the system stabilizes.

**Figure 9. Power-on condition, all LEDs ON**



After the around 4-5 seconds, the system stabilizes and just the green power LED remains on (see [Figure 10](#)).

**Figure 10. System stable, ready to use**



*Note:* Do not perform any operations while the system is stabilizing (i.e. while all three LEDs glow).

#### 2.1.2 Default system settings

The system comes with a number of default settings including the administrator password, which is "00000". You are recommended to change this as soon as the system is functional (refer to the GUI help).

### 2.1.3 Valid user code

A valid user code is 5-digit long. You cannot use "00000" as a code; it is reserved for the system default setting.

A total of 49 user codes are supported by the system.

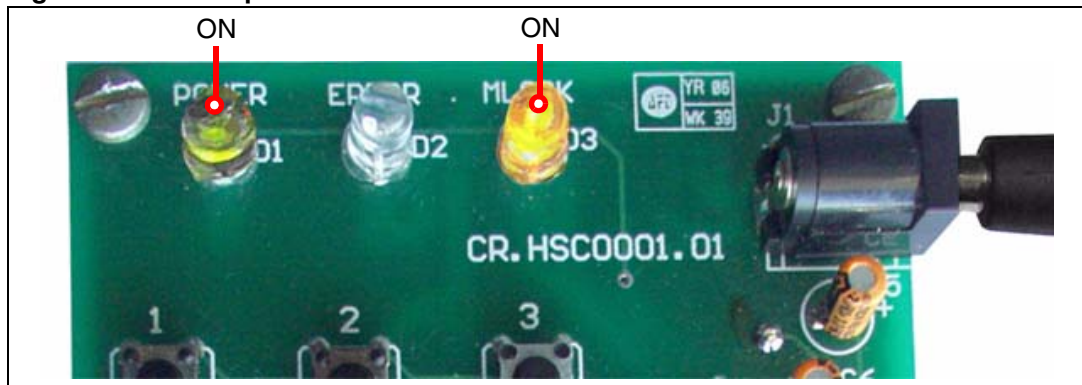
### 2.1.4 Door open

Each valid user code entry is presented by the magnetic lock LED (yellow) glowing (see [Figure 11](#)). The door remains open for approximately 15 seconds.

If another command is issued during the *door open* condition, the new command will override and the system will perform accordingly.

All these events are logged in the EEPROM and can be seen through the GUI.

**Figure 11. Door open condition**



### 2.1.5 Physical intrusion

The system has been designed to detect physical tampering. Four jumpers have been provided on the board that determine the tamper condition.

- Normal or no tampering condition  
This is the default status, when both the NL jumpers (JP2, JP4) are closed and both the NH jumpers (JP1, JP3) are open. The buzzer is off.
- Tampering - normal low  
This is the tamper condition when either or both of the NL jumpers (JP2, JP4) are open and both the NH jumpers (JP1, JP3) are open. The buzzer is on.
- Tampering - normal high  
This is the tamper condition when both the NL jumpers (JP2, JP4) are closed and either or both of the NH jumpers (JP1, JP3) are closed. The buzzer is on.

*Note:* There can be various cases of tampering based on the 4 jumper settings. All are supported by the system and the buzzer is always on, in the event of tampering.

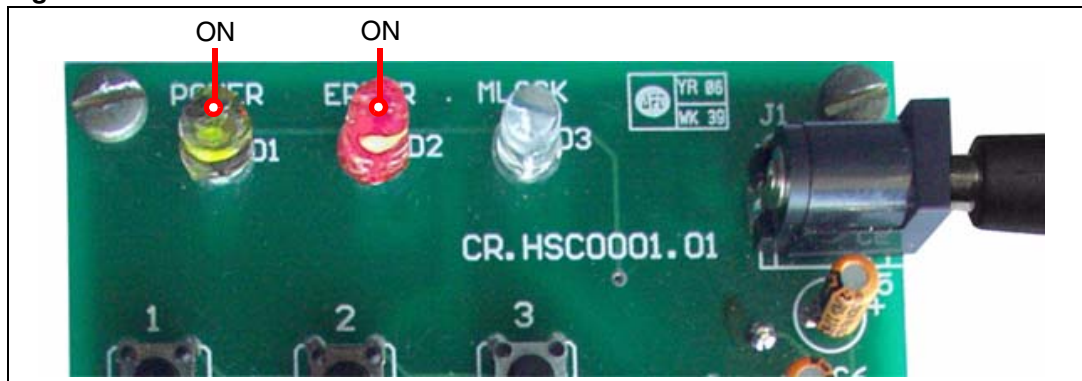
For details on the tamper detection circuit and design refer to STM1403 data sheet.

### 2.1.6 Error conditions in user mode

There are various error states for this system, as explained below. For each of the errors encountered the red error LED glows (see [Figure 12](#)) for approximately 4-5 seconds.

1. Wrong 5-digit user code  
The user enters a 5-digit user code which does not match any of the valid user codes already added in the system. This event is logged in the EEPROM and can be seen through the GUI.
2. Time-out condition between 2 key presses  
The gap between two key press events exceeds 5 seconds.

**Figure 12. Error condition**



### 2.1.7 User-code tampering

When the user consecutively enters three wrong 5-digit user codes within 10 minutes, the system enters a *user-code tampering* state. This condition is presented by the red error LED (see [Figure 12](#)) glowing for approximately 10 minutes. During this time, the magnetic lock is disabled. This event is logged in the EEPROM.

This condition can be exited in one of two-ways, either by waiting for 10 minutes or by entering the administrator password to return the system back to a *normal* state (which returns the LEDs back to just green Power). This event is also, logged in the EEPROM.

All the logged events can be seen in the GUI.

**Note:** *While the system is in the user-code tampering state, no other commands (except the entering of the administrator password) are acknowledged by the system either through the keys or through the GUI.*

## 2.2 Administrator mode through board

### 2.2.1 Add new user code

To add a new user code to the system, follow the steps below:

1. Press the ★ key.  
The red Error LED starts flashing, indicating that you are in administrator mode.
2. Enter the admin password within 1 minute.
  - If the admin password is valid, the red error LED flashes 6-times.
  - If the admin password is wrong, the red error LED glows for approximately 12 seconds. After this the system exits admin mode. Also, this event is logged in the EEPROM as "Invalid Password: Error" and can be seen through the GUI.
  - If the admin password is not entered within 1 minute, the red error LED glows for approximately 12 seconds. After this the system exits admin mode.
3. Press the ★ key, within 1 minute
  - If ★ is pressed, the system checks if there is space to accommodate a new user. If yes, the red error LED flashes 6-times. Otherwise, no additional users can be added and the red error LED flashes 30-times and the system exits admin mode.
  - If any other key is pressed, the red error LED glows for approximately 12 seconds. After this the system exits admin mode.
  - If no key is pressed within 1 minute, the red error LED glows for approximately 12 seconds. After this the system exits admin mode.
4. Enter the new user code to be added, within 1 minute.
  - If a 5-digit user code is entered, the system checks if it exists. If not found, the red error LED flashes 6-times. If it exists, the red error LED glows for approximately 12 seconds and the system exits admin mode.
  - If user code is not entered within 1 minute, the red error LED glows for approximately 12 seconds. After this the system exits admin mode.
5. Press the ★ key, within 1 minute
  - If ★ is pressed, this is confirmation by the user to add the user code. The system is updated and the red error LED flashes 18-times. After this the system exits admin mode.
  - If any other key is pressed, the red error LED glows for approximately 12 seconds. After this the system exits admin mode. No new user code is added to the system.
  - If no key is pressed within 1 minute, the red error LED glows for approximately 12 seconds. After this the system exits admin mode. No new user code is added to the system.

The *adding new user* event is logged in the EEPROM and can be seen through the GUI.

**Note:** *You are not allowed by the system to add "00000" or admin password as user code. Any attempt is handled as 'user code already exists' and the red error LED glows for approximately 12 seconds and the system exits admin mode.*

### 2.2.2 Delete user code

To delete a user code from the system, follow the steps shown below:

1. Press the **★** key.  
The red error LED starts flashing, indicating that you are in administrator mode.
2. Enter the admin password, within 1 minute.
  - If the admin password is valid, the red error LED flashes 6-times.
  - If the admin password is wrong, the red error LED glows for approximately 12 seconds. After this the system exits admin mode. Also, this event is logged in the EEPROM as "Invalid Password: Error" and can be seen through the GUI.
  - If the admin password is not entered within 1 minute, the red error LED glows for approximately 12 seconds. After this the system exits admin mode.
3. Press the **#** key, within 1 minute
  - If **#** is pressed, the system checks if there is any user code in the system to be deleted. If yes, the red error LED flashes 6 times. Otherwise, (no user code to delete) the red error LED flashes 30 times and the system exits admin mode.
  - If an incorrect key is pressed, the red error LED glows for approximately 12 seconds. After this the system exits admin mode.
  - If no key is pressed within 1 minute, the red error LED glows for approximately 12 seconds. After this the system exits admin mode.
4. Enter the user code to be deleted, within 1 minute.
  - If a 5-digit user code is entered, the system checks if it exists. If it exists, the red error LED flashes 6 times. If not found, the red error LED glows for approximately 12 seconds and the system exits admin mode.
  - If a user code is not entered within 1 minute, the red error LED glows for approximately 12 seconds. After this the system exits admin mode.
5. Press the **★** key, within 1 minute
  - If **★** is pressed, this is confirmation by the user to delete the user code. The system is updated and the red error LED flashes 18 times. After this the system exits admin mode.
  - If an incorrect key is pressed, the red error LED glows for approximately 12 seconds. After this the system exits admin mode. No user code is deleted from the system.
  - If no key is pressed within 1 minute, the red error LED glows for approximately 12 seconds. After this the system exits admin mode. No user code is deleted from the system.

Deleting a user event is logged in the EEPROM and can be seen through the GUI.

**Note:** *The system prevents the admin password from being deleted. Any attempt to do so is handled as 'user code not found' and the red error LED glows for approximately 12 seconds and the system exits admin mode.*

## 2.3 Administrator password reset through board

In the event that the administrator password is forgotten, it can be reset to the default value of "00000". This is done as follows:

1. Press the # key.  
The red error LED starts to flash, indicating that you are in *administrator reset password* mode.
2. Enter "12345", within 1 minute.
  - If correctly entered, the red error LED flashes 6 times.
  - If incorrectly entered, the red error LED glows for approximately 12 seconds. After this the system exits admin reset password mode.
  - If nothing entered within the 1 minute, the red error LED glows for approximately 12 seconds. After this the system exits from admin reset password mode.
3. Press the # key, within 1 minute.
  - If # is pressed, the red error LED flashes 18 times.
  - If an incorrect key is pressed, the red error LED glows for approximately 12 seconds. After this the system exits from admin reset password mode.
  - If no key is pressed within 1 minute, the red error LED glows for approximately 12 seconds. After this the system exits from admin reset password mode.
4. Press the # key.  
The red error LED flashes 6 times.
5. Enter "54321", within 1 minute.
  - If a correct entry is made, the red error LED flashes 6 times.
  - If an incorrect entry, the red error LED glows for approximately 12 seconds. After this the system exits from admin reset password mode.
  - If nothing is entered within 1 minute, the red error LED glows for approximately 12 seconds. After this the system exits from admin reset password mode.
6. Press the # key, within 1 minute.
  - If # is pressed, this is confirmation for the administration password reset to "00000". The red error LED flashes 18 times. The system exists from the admin reset password mode.
  - If an incorrect key is pressed, the red error LED glows for approximately 12 seconds. The administrator password is not reset and the system exits from admin reset password mode.
  - If no key is pressed within 1 minute, the red error LED glows for approximately 12 seconds. The administrator password is not reset and the system exits from admin reset password mode.

## 2.4 Administrator mode through PC graphical user interface

### 2.4.1 Connecting to the PC

Connect the RS232 serial cable between the demonstration board and the PC and power on the board.

*Note:* Even if the board is connected with the RS232 serial cable with power on, the system enters the GUI mode as soon as the administrator password is entered in the login window. You



*need to make sure that the system is not in the process of executing another command at this time, otherwise unexpected behavior is possible.*

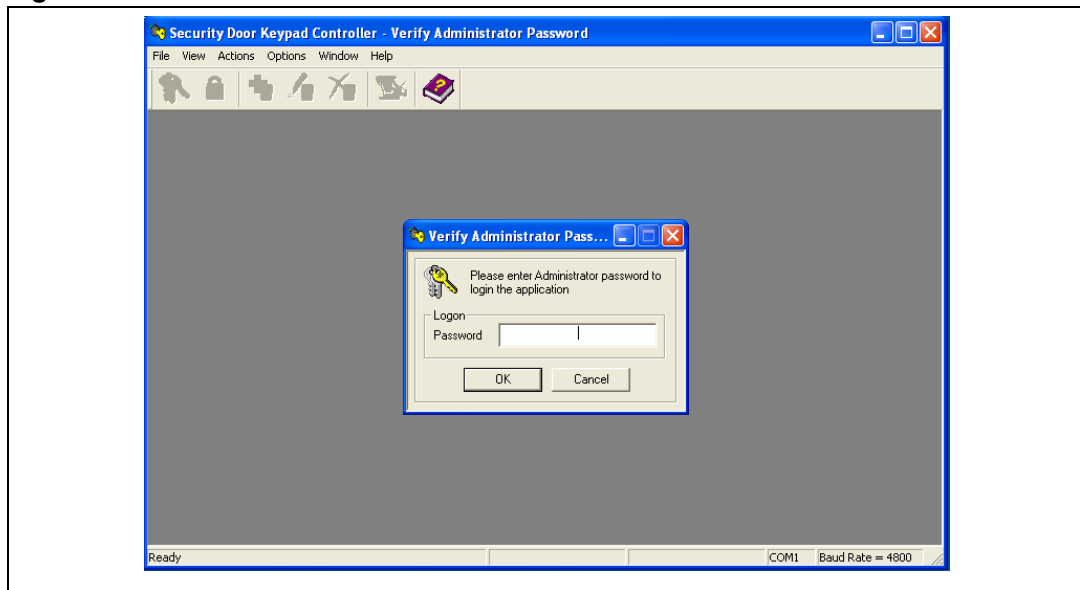
## 2.4.2 Powering on the board

This is the same process as with the user mode. Refer to [Section 2.1.1 on page 10](#).

## 2.4.3 The first GUI window - login GUI mode

Opening the GUI executable, the first window appears as shown in [Figure 13](#).

**Figure 13. First GUI window**



Enter the administrator password. If correct, administrator mode is entered and all features are available. Otherwise, an invalid password error message appears.

For details on each feature and its usage refer to the GUI help manual.

**Note:** *When in GUI mode, the system cannot be used or configured in user or administrator modes configuration from the board itself.*



### 2.4.4 Communication setting

Ensure that the communication settings between the board and GUI are as follows:

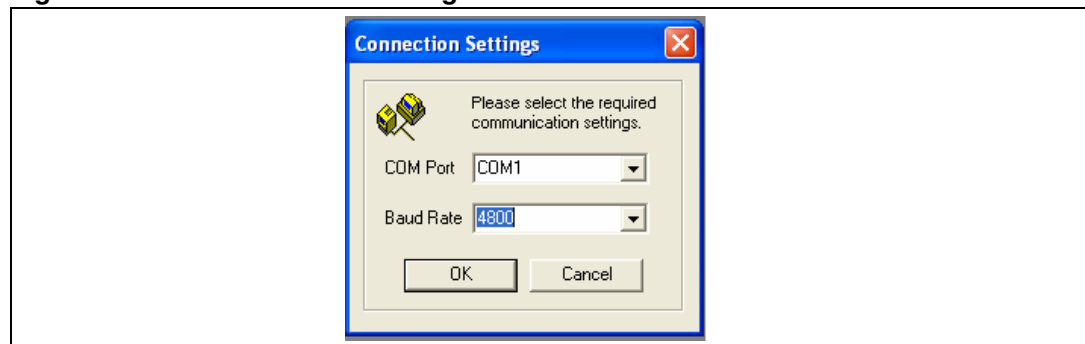
- baud rate is set to 4800
- right COM port is selected

Follow the steps below to configure the communication settings through the GUI (see [Figure 14](#)),

1. Go to **Options, Connection Settings...**
2. Choose the serial communication port to which board is connected
3. Choose the baud rate = 4800
4. Click **OK**

*Note:* The chosen settings are automatically saved for future sessions.

**Figure 14. Communication settings window**

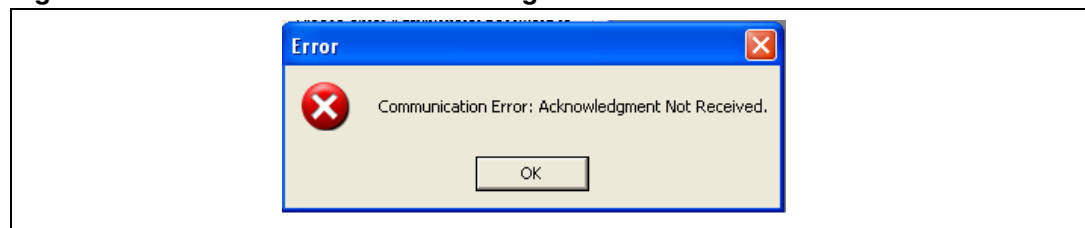


### 2.4.5 Communication error

If the following message appears ([Figure 15](#)), then it could be due to the following reasons:

1. Baud rate mismatch (set it to 4800), the red error LED glows
2. RS232 serial cable not connected properly
3. Incorrect COM port selection

**Figure 15. Communication error message**



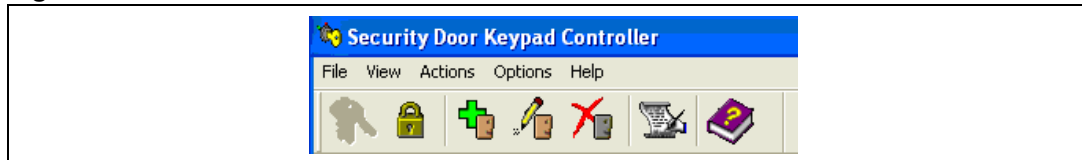
## 2.4.6 Features supported by the GUI

Following features are supported by the GUI,

1. **Add user code** (Actions)  
Add new user code to the system.
2. **Delete user code**  
Delete an existing user code from the system.
3. **Delete all user codes**  
Delete all existing user codes from the system. This feature is supported only through GUI.
4. **Modify user code**  
Replace the existing user code with a new one. This feature is supported only through GUI.
5. **View event log**  
Summary of all the events logged in EEPROM of the system. This feature is supported only through GUI.
6. **Delete event log**  
Delete the EEPROM data. This feature is supported only through GUI.
7. **View code list**  
View all the active user code for the system. This feature is supported only through GUI.
8. **Change admin password**  
Change the admin password. This feature is supported only through GUI.

To select these features you can use either the tool bar (as shown in [Figure 16](#)) or the menu bar (see [Figure 17](#)).

**Figure 16. Tool bar**



**Figure 17. Menu bar**



For details on each feature and its usage refer to the GUI help manual.

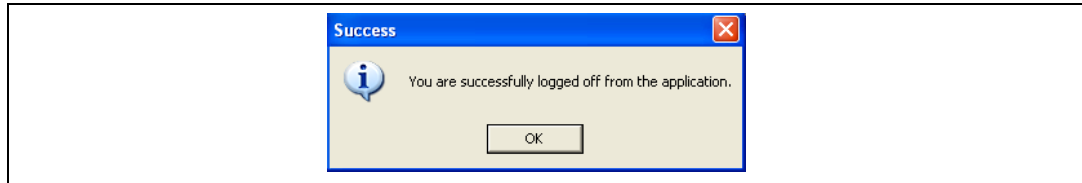
### 2.4.7 Logoff GUI mode

After working in administrator mode through the PC GUI, you can choose to log-off (**File, Logoff**). This sends a *disconnect* command to the board (see [Figure 18](#)). Then close the GUI window. Remove the RS232 serial cable.

*Shortcut:* By directly closing the GUI window, a *disconnect* command is directly issued to the board. Remove the RS232 serial cable.

All three LEDs glow for 4-5 seconds (see [Figure 9](#)).

**Figure 18. Logoff message**



The system then becomes available to operate in user or administrator modes through the board itself (see [Figure 10](#)).

### 2.4.8 Automatic Logoff from GUI mode (through watchdog)

The system is designed in such a way to support automatic log-off from GUI mode, if no communication from PC is received.

No communication from the PC could be due to:

- RS232 cable un-plugged without proper log-off from the GUI
- GUI idle for long time, no serial communication between PC and board

In this situation the system watchdog is activated for approximately 30 seconds. After that the system resets, all the three LEDs start glowing for 4-5 seconds (see [Figure 9](#)). The system then becomes available to operate in user or administrator modes through the board itself (see [Figure 10](#)).

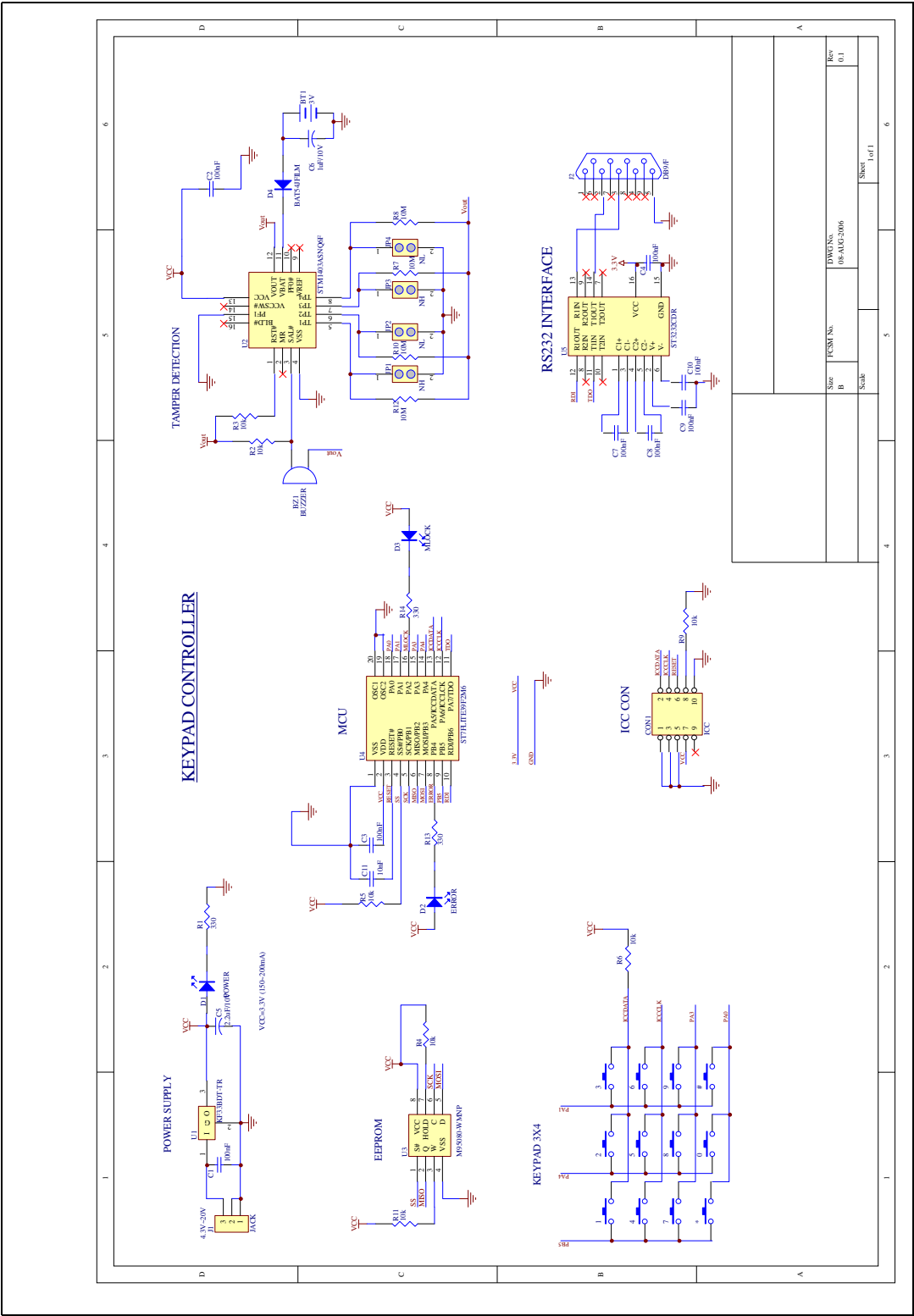
*Note:* As this is a case of improper log-off, it is desirable that when the serial communication is re-established between the PC and board the user should re-login to view the real status. Otherwise the status on the GUI may not be updated.

## Appendix A    Abbreviations

**Table 1.    Abbreviations**

No.	Acronym	Definition
1	RTC	Real Time Clock
2	PC	Personal Computer
3	EEPROM	Electrically Erasable Programmable Read Only Memory
4	SPI	Serial Peripheral Interface
5	LED	Light Emitting Diode
6	SCI	Serial Communication Interface
7	OS	Operating System
8	ICC	In-circuit communication
9	Admin	Administrator

Appendix B Demonstration board schematic



## Appendix C Bill of materials

**Table 2. Bill of materials**

Designator	Quantity	Reference	Value / Generic Part Number	Package	Manufact/ Supplier	Manufacturer's /Supplier's ordering code / Orderable Part Number
U4	1	ST7FLite39F2 M6 - MCU	ST7FLite39F2 M6	SO-20	ST	ST7FLite39F2M6
U3	1	EEPROM	M95080- WMN6	SO-8	ST	M95080-WMN6
U2	1	Tamper Detect	STM1403ASN Q6F	QFN-16	ST	STM1403ASNQ6F
U1	1	Voltage Regulator	KF33BDT-TR	DPAK-3	ST	KF33BDT-TR
U5	1	RS-232 interface	ST3232	SO-16	ST	ST3232CDR
D4	1	Diode	BAT54J	SOD-323	ST	BAT54JFILM
J2	1	RS-232 connector		DB9/F	Farnell	105-6112
CON1	1	ICC Connector		Header 5x2/ IDC-10B	Farnell	1106782
D1	1	LED	Green	Through- hole	Farnell	884-698
D2	1	LED	Red	Through- hole	Farnell	942-492
D3	1	LED	Yellow	Through- hole	Farnell	942-455
0	1	Push-button Switches		4-leg Through- hole (Push- 4)	Farnell	535-916
1	1	Push-button Switches		4-leg Through- hole (Push- 4)	Farnell	535-916
2	1	Push-button Switches		4-leg Through- hole (Push- 4)	Farnell	535-916
3	1	Push-button Switches		4-leg Through- hole (Push- 4)	Farnell	535-916

Table 2. Bill of materials

Designator	Quantity	Reference	Value / Generic Part Number	Package	Manufact/ Supplier	Manufacturer's /Supplier's ordering code / Orderable Part Number
4	1	Push-button Switches		4-leg Through- hole (Push- 4)	Farnell	535-916
5	1	Push-button Switches		4-leg Through- hole (Push- 4)	Farnell	535-916
6	1	Push-button Switches		4-leg Through- hole (Push- 4)	Farnell	535-916
7	1	Push-button Switches		4-leg Through- hole (Push- 4)	Farnell	535-916
8	1	Push-button Switches		4-leg Through- hole (Push- 4)	Farnell	535-916
9	1	Push-button Switches		4-leg Through- hole (Push- 4)	Farnell	535-916
★	1	Push-button Switches		4-leg Through- hole (Push- 4)	Farnell	535-916
#	1	Push-button Switches		4-leg Through- hole (Push- 4)	Farnell	535-916
BZ1	1	DC-Buzzer		Through- hole (85db, 1.5V-27V DC)	Stuff	S.E. - B-20-B
	1	3V Battery	CR2032	Coin type	MAXEL	MAXELCR2032
BT1	1	Battery Socket		BATT-C	MAXEL	MAXELCR2032
R11, R2, R3, R4, R5, R6, R9	7	Resistor	10K	0805	Local	

Table 2. Bill of materials

Designator	Quantity	Reference	Value / Generic Part Number	Package	Manufact/ Supplier	Manufacturer's /Supplier's ordering code / Orderable Part Number
R1, R13, R14	3	Resistor	330	0805	Local	
R10, R12, R7,R8	4	Resistor	10M	0805	Local	
C1, C10, C2,C3, C4, C7,C8, C9	8	Capacitor	0.1 F	0805	Local	
C6	1	Capacitor	1 F/10V	CAP	Local	
C5	1	Capacitor	2.2 F/10V	CAP	Local	
J1	1	Power Jack (for adaptor)		power jack for adaptor	Local	
JP1, JP2, JP3, JP4	4	Jumper		SIP-2 (berg strip)	Local	
C11	1	Capacitor	10nF	0805	Local	



## Appendix D Troubleshooting

### D.1 Communication error

A "Communication error" message may appear on the PC screen (as in [Figure 15](#)) for any of the following reasons:

1. Baud rate mismatch (set it to 4800), signaled by the red error LED glowing
2. RS232 serial cable not connected or not connected properly
3. Incorrect COM port selection (set it to correct setting based on the PC configuration)
4. Board not power-on

In all the above cases, the user needs to re-start the GUI.

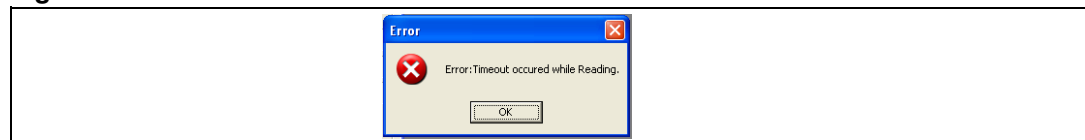
5. Red error LED glowing

For this case, when the Error LED (red) turns off, then the user needs to re-start the GUI.

### D.2 Time-out error

The "Time-out error" (see [Figure 19](#)), is shown when the command issued by the user takes longer to finish than expected by the system on the GUI side, though the operation is completed on the board side. In this case, the user needs to re-start the GUI to get the real system status.

**Figure 19. Time-out error**

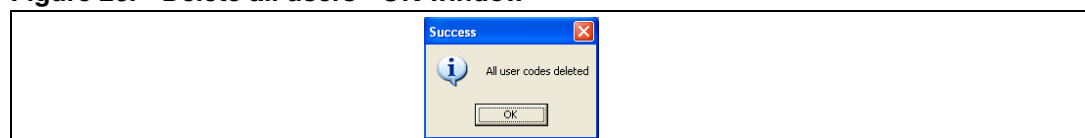


### D.3 Delete all users

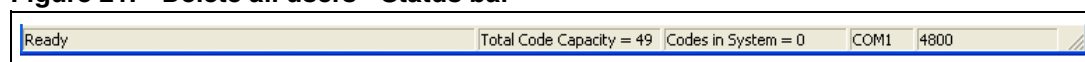
Deleting all users is a time-consuming process. To ensure that this is completed, after receiving the OK prompt from the GUI (see [Figure 20](#)), make sure that the "Code in system = 0" in the status bar. Wait a little longer if this has not been updated. As soon as the status bar displays "Code in system = 0" the system is ready for next command (see [Figure 21](#)).

*Note: If any command is sent and the delete all users operation is not complete, system behavior is not guaranteed.*

**Figure 20. Delete all users - OK window**



**Figure 21. Delete all users - Status bar**



### 3 Revision history

**Table 3. Document revision history**

Date	Revision	Changes
06-Apr-2007	1	Initial release.
05-Apr-2013	2	Updated part numbers (ST7FLITE39F2 instead of ST7FLITE39) Updated ST logo and Disclaimer.

**Please Read Carefully:**

Information in this document is provided solely in connection with ST products. STMicroelectronics NV and its subsidiaries ("ST") reserve the right to make changes, corrections, modifications or improvements, to this document, and the products and services described herein at any time, without notice.

All ST products are sold pursuant to ST's terms and conditions of sale.

Purchasers are solely responsible for the choice, selection and use of the ST products and services described herein, and ST assumes no liability whatsoever relating to the choice, selection or use of the ST products and services described herein.

No license, express or implied, by estoppel or otherwise, to any intellectual property rights is granted under this document. If any part of this document refers to any third party products or services it shall not be deemed a license grant by ST for the use of such third party products or services, or any intellectual property contained therein or considered as a warranty covering the use in any manner whatsoever of such third party products or services or any intellectual property contained therein.

**UNLESS OTHERWISE SET FORTH IN ST'S TERMS AND CONDITIONS OF SALE ST DISCLAIMS ANY EXPRESS OR IMPLIED WARRANTY WITH RESPECT TO THE USE AND/OR SALE OF ST PRODUCTS INCLUDING WITHOUT LIMITATION IMPLIED WARRANTIES OF MERCHANTABILITY, FITNESS FOR A PARTICULAR PURPOSE (AND THEIR EQUIVALENTS UNDER THE LAWS OF ANY JURISDICTION), OR INFRINGEMENT OF ANY PATENT, COPYRIGHT OR OTHER INTELLECTUAL PROPERTY RIGHT.**

**ST PRODUCTS ARE NOT AUTHORIZED FOR USE IN WEAPONS. NOR ARE ST PRODUCTS DESIGNED OR AUTHORIZED FOR USE IN: (A) SAFETY CRITICAL APPLICATIONS SUCH AS LIFE SUPPORTING, ACTIVE IMPLANTED DEVICES OR SYSTEMS WITH PRODUCT FUNCTIONAL SAFETY REQUIREMENTS; (B) AERONAUTIC APPLICATIONS; (C) AUTOMOTIVE APPLICATIONS OR ENVIRONMENTS, AND/OR (D) AEROSPACE APPLICATIONS OR ENVIRONMENTS. WHERE ST PRODUCTS ARE NOT DESIGNED FOR SUCH USE, THE PURCHASER SHALL USE PRODUCTS AT PURCHASER'S SOLE RISK, EVEN IF ST HAS BEEN INFORMED IN WRITING OF SUCH USAGE, UNLESS A PRODUCT IS EXPRESSLY DESIGNATED BY ST AS BEING INTENDED FOR "AUTOMOTIVE, AUTOMOTIVE SAFETY OR MEDICAL" INDUSTRY DOMAINS ACCORDING TO ST PRODUCT DESIGN SPECIFICATIONS. PRODUCTS FORMALLY ESCC, QML OR JAN QUALIFIED ARE DEEMED SUITABLE FOR USE IN AEROSPACE BY THE CORRESPONDING GOVERNMENTAL AGENCY.**

Resale of ST products with provisions different from the statements and/or technical features set forth in this document shall immediately void any warranty granted by ST for the ST product or service described herein and shall not create or extend in any manner whatsoever, any liability of ST.

ST and the ST logo are trademarks or registered trademarks of ST in various countries.

Information in this document supersedes and replaces all information previously supplied.

The ST logo is a registered trademark of STMicroelectronics. All other names are the property of their respective owners.

© 2013 STMicroelectronics - All rights reserved

STMicroelectronics group of companies

Australia - Belgium - Brazil - Canada - China - Czech Republic - Finland - France - Germany - Hong Kong - India - Israel - Italy - Japan - Malaysia - Malta - Morocco - Philippines - Singapore - Spain - Sweden - Switzerland - United Kingdom - United States of America

[www.st.com](http://www.st.com)

# AMEYA360

## Components Supply Platform

Authorized Distribution Brand :



Website :

Welcome to visit [www.ameya360.com](http://www.ameya360.com)

Contact Us :

➤ Address :

401 Building No.5, JiuGe Business Center, Lane 2301, Yishan Rd  
Minhang District, Shanghai , China

➤ Sales :

Direct +86 (21) 6401-6692

Email [amall@ameya360.com](mailto:amall@ameya360.com)

QQ 800077892

Skype ameyasales1 ameyasales2

➤ Customer Service :

Email [service@ameya360.com](mailto:service@ameya360.com)

➤ Partnership :

Tel +86 (21) 64016692-8333

Email [mkt@ameya360.com](mailto:mkt@ameya360.com)