

# Customer Information Sheet

DRAWING No.: P25-XX23

SHEET 2 OF 2

IF IN DOUBT - ASK

(C)

NOT TO SCALE

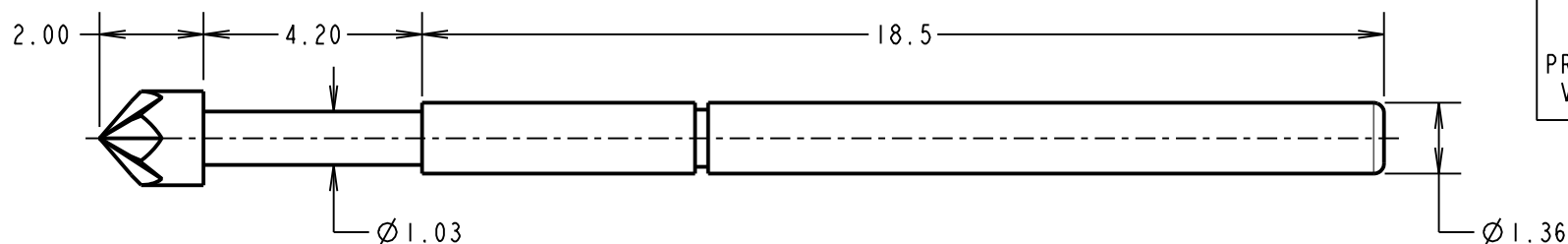
THIRD ANGLE PROJECTION

ALL DIMENSIONS IN mm

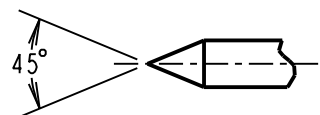
ORDER CODE:

**P25-XX23**

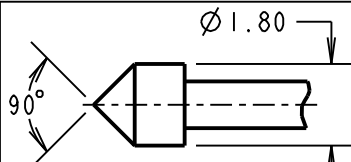
PROBE HEAD:  
VARIANT (SEE BELOW)



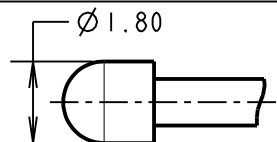
## PROBE HEAD VARIANTS



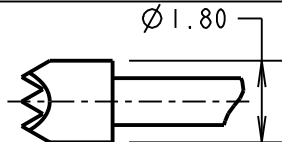
SPEAR HEAD  
P25-0123



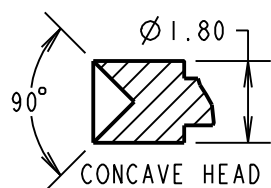
CONVEX HEAD  
P25-2223



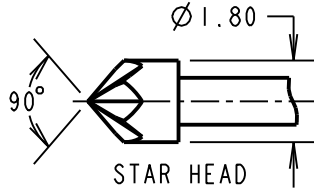
SPHERICAL RADIUS HEAD  
P25-0423



SERRATED HEAD  
P25-4023



CONCAVE HEAD  
P25-1223



STAR HEAD  
P25-5223

## NOTES:

1. TO BE USED WITH SLEEVE S25-XX2.
2. SUITABLE FOR A MINIMUM DISTANCE BETWEEN CENTRES OF 2.54mm.

## SPECIFICATIONS:

### MATERIAL:

PLUNGER = BERYLLIUM COPPER

BARREL = BRASS

SPRING = STAINLESS STEEL

### FINISH:

PLUNGER AND BARREL = GOLD

### ELECTRICAL:

CURRENT RATING = 3A

CONTACT RESISTANCE = 50mΩ MAX AT 2/3 TRAVEL

### MECHANICAL:

DURABILITY = 100,000 CYCLES MIN

FULL TRAVEL = 4.20mm

### SPRING FORCES:

AT FULL TRAVEL = 1.47N ± 0.29N (150G ± 20%)

AT 2/3 TRAVEL = 1.13N ± 0.23N (115g ± 20%)

### ENVIRONMENTAL:

TEMPERATURE RANGE = -40°C TO +85°C

|                |      |              |        |
|----------------|------|--------------|--------|
| SB             | 7    | 27.05.15     | 12922  |
| NAME           | ISS. | DATE         | C/NOTE |
| APPROVED:      |      | S.BENNETT    |        |
| CHECKED:       |      | M.PLESTED    |        |
| DRAWN:         |      | W. J. BOURNE |        |
| CUSTOMER REF.: |      |              |        |
| ASSEMBLY DRG:  |      |              |        |

# HARWIN

www.harwin.com  
technical@harwin.com

THIS DRAWING AND ANY INFORMATION OR DESCRIPTIVE MATTER SET OUT HEREON ARE CONFIDENTIAL AND COPYRIGHT PROPERTY OF THE HARWIN GROUP AND MUST NOT BE DISCLOSED, LOANED, COPIED OR USED FOR MANUFACTURING, TENDERING OR FOR ANY OTHER PURPOSE WITHOUT THEIR WRITTEN PERMISSION.

## TOLERANCES

X. = ±1mm  
X.X = ±0.50mm  
X.XX = ±0.10mm  
X.XXX = ±0.01mm

ANGLES = ±5°

UNLESS STATED

## MATERIAL:

SEE ABOVE

FINISH: SEE ABOVE

S/AREA: mm<sup>2</sup>

## TITLE:

2.54mm MIN. CENTRE  
TWO-PIECE SPRING PROBE

DRAWING NUMBER:

**P25-XX23**

SHT  
2 OF 2

# AMEYA360

## Components Supply Platform

Authorized Distribution Brand :



Website :

Welcome to visit [www.ameya360.com](http://www.ameya360.com)

Contact Us :

➤ Address :

401 Building No.5, JiuGe Business Center, Lane 2301, Yishan Rd  
Minhang District, Shanghai , China

➤ Sales :

Direct +86 (21) 6401-6692

Email [amall@ameya360.com](mailto:amall@ameya360.com)

QQ 800077892

Skype ameyasales1 ameyasales2

➤ Customer Service :

Email [service@ameya360.com](mailto:service@ameya360.com)

➤ Partnership :

Tel +86 (21) 64016692-8333

Email [mkt@ameya360.com](mailto:mkt@ameya360.com)