

**MICRO SWITCH**FREEPORT, ILLINOIS, U.S.A.  
A DIVISION OF HONEYWELL

FED. MFG. CODE 91929

**ASSEMBLY-  
PUSHBUTTON SWITCH**

CATALOG LISTING

**2PB43****2PB43**

PAGE 1 OF 1

**M**DRAWING  
NUMBER

6

ISSUE

REPLACES

RELEASE NO.

CHECK

CHECK

APR 65

LSD

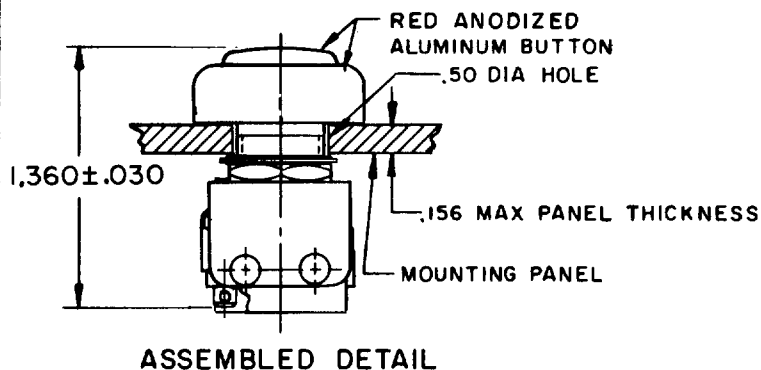
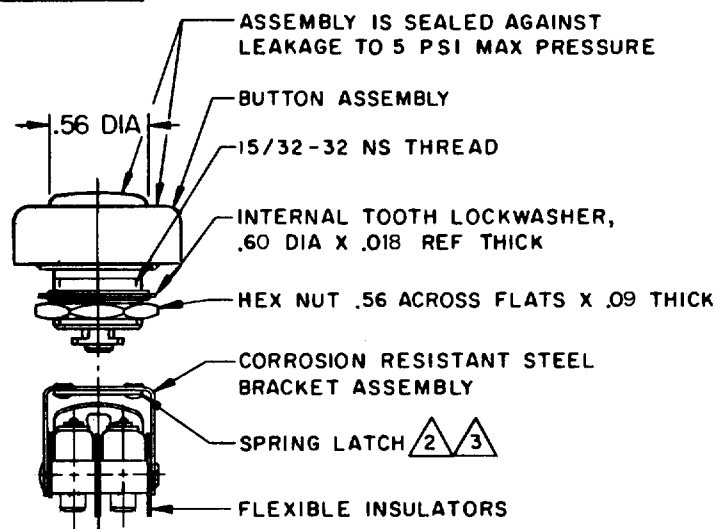
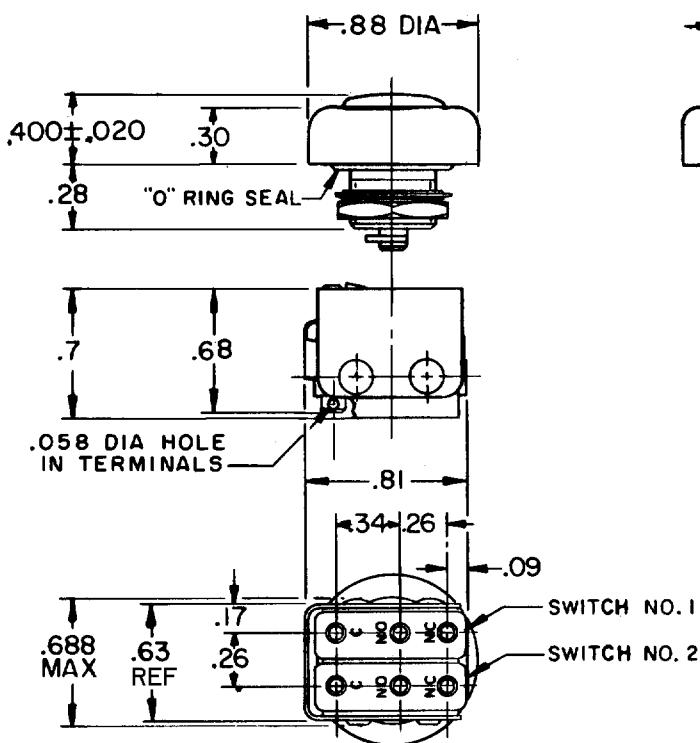
CHECK

M B F 2 APR 65

FORMTEK

FO-50378

DRAWN

**ASSEMBLED DETAIL****NOTES**

- 1 - UNIT INCLUDES CATALOG LISTING "ISM" TYPE BASIC SWITCH (2)
- 2 SPRING LATCH PERMITS ASSEMBLY AND DISASSEMBLY AS REQUIRED
- 3 "D" SHAPED HOLE IN SPRING LATCH PREVENTS ROTATION BETWEEN THE TWO PARTS
- 4 - ASSEMBLY IS COMPLETED AFTER INSTALLING BUTTON TO PANEL
- 5 - SWITCHES DO NOT NECESSARILY OPERATE SIMULTANEOUSLY
- 6 - TERMINALS ARE PLATED FOR SOLDERING

THIS DRAWING COVERS A PROPRIETARY ITEM AND IS THE PROPERTY OF MICRO SWITCH, A DIVISION OF HONEYWELL. THIS DRAWING IS NOT TO BE COPIED OR USED WITHOUT THE APPROVAL OF MICRO SWITCH.

**CHARACTERISTICS**OPERATING FORCE -- 2 1/2 LB APPROX  
PLUNGER TRAVEL -- .062 APPROX**ELECTRICAL DATA****CONTACT ARRANGEMENT  
S P D T (2)**

250 VAC	---	5 AMP
30 VOLTS DC RATING		
INDUCTIVE	---	SEA LEVEL --- 3 AMP
	---	50,000 FT --- 2.5 AMP
RESISTIVE	---	SEA LEVEL --- 5 AMP
	---	50,000 FT --- 5 AMP
MAXIMUM INRUSH	---	24 AMP

**SCALE FULL****DO NOT SCALE PRINT****UNLESS OTHERWISE  
NOTED**

DIMENSIONS ARE IN INCHES

**TOLERANCES ARE:**

ONE PLACE	(.0)	±.030
TWO PLACE	(.00)	±.015
THREE PLACE	(.000)	±.005
ANGLES		±

**WEIGHT**

# AMEYA360

Components Supply Platform

Authorized Distribution Brand :



Website :

Welcome to visit [www.ameya360.com](http://www.ameya360.com)

Contact Us :

➤ Address :

401 Building No.5, JiuGe Business Center, Lane 2301, Yishan Rd  
Minhang District, Shanghai , China

➤ Sales :

Direct      +86 (21) 6401-6692  
Email        amall@ameya360.com  
QQ          800077892  
Skype        ameyasales1 ameyasales2

➤ Customer Service :

Email        service@ameya360.com

➤ Partnership :

Tel          +86 (21) 64016692-8333  
Email        mkt@ameya360.com