

Features

- Single 15-dB Step
- Low Loss, 0.3 dB Typical @ 900 MHz
- 2.5 to 5.0 Volt Operation
- Tape and Reel Packaging Available
- Lead-Free SOT-25 Package
- 100% Matte Tin Plating over Copper
- Halogen-Free "Green" Mold Compound
- 260°C Reflow Compatible
- RoHS* Compliant Version of AT-267

Description

M/A-COM's MAADSS0008 is a 1-bit, 15-dB step GaAs MMIC digital attenuator in a lead-free SOT-25, 5 lead surface mount plastic package. The MAADSS0008 is ideally suited for use where high accuracy, very low power consumption and low intermodulation products are required.

Typical applications include wireless handsets, base stations, wireless LAN equipment, GPS receivers and any RF applications with automatic gain/level control circuits.

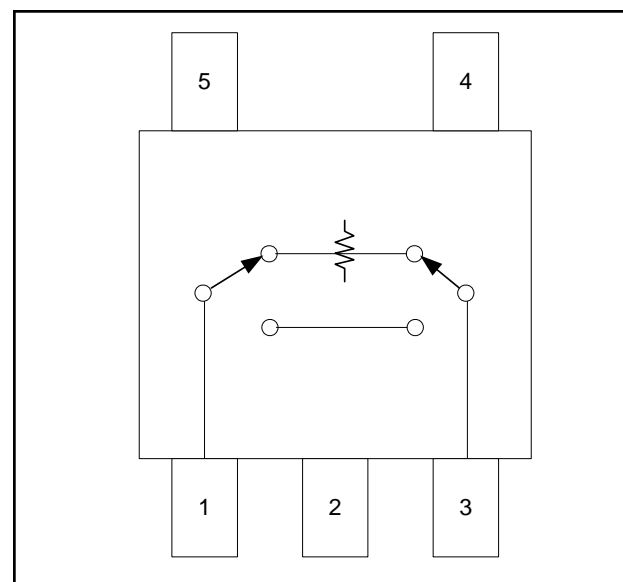
The MAADSS0008 is fabricated as a monolithic GaAs integrated circuit using a mature PHEMT process. The process features full chip passivation for performance and reliability.

Ordering Information ¹

Part Number	Package
MAADSS0008TR	1000 piece reel
MAADSS0008TR-3000	3000 piece reel
MAADSS0008SMB	Sample Board

1. Reference Application Note M513 for reel size information.

Functional Schematic



Pin Configuration

Pin No.	Function	Pin No.	Function
1	RF Input Port	4	V1
2	Ground	5	V2
3	RF Output Port		

Absolute Maximum Ratings ^{2,3}

Parameter	Absolute Maximum
Input Power	+21 dBm
Control Voltage	$ V_C \leq 8V$
Operating Temperature	-40°C to +85°C
Storage Temperature	-65°C to +150°C

- Exceeding any one or combination of these limits may cause permanent damage to this device.
- M/A-COM does not recommend sustained operation near these survivability limits.

* Restrictions on Hazardous Substances, European Union Directive 2002/95/EC.

Digital Attenuator, 1-Bit, 15 dB DC - 2.0 GHz

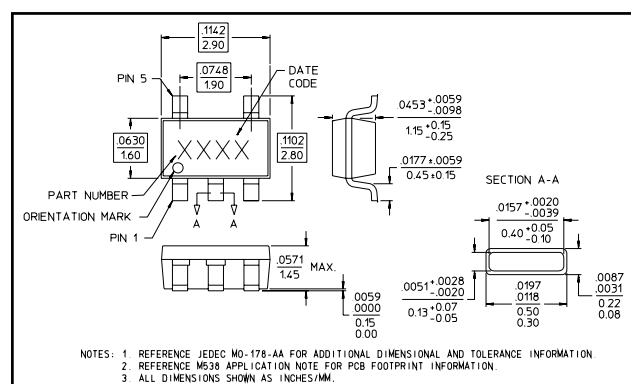
Rev. V1

Electrical Specifications⁴: $T_A = 25^\circ\text{C}$, $V_C = +2.5\text{ Volts}$, $Z_0 = 50\ \Omega$

Parameter	Test Conditions	Units	Min	Typ	Max
Insertion Loss (Reference State)	1.0 GHz	dB	—	0.3	0.4
	2.0 GHz	dB	—	0.4	0.5
Attenuation	1.0 GHz	dB	14.6	15.1	15.6
	2.0 GHz	dB	14.4	14.9	15.4
VSWR	1.0 GHz	Ratio	—	1.2:1	—
	2.0 GHz	Ratio	—	1.3:1	—
Input IP_3	1.0 GHz	dBm	40	50	—
	Insertion Loss State Attenuation State	dBm	40	50	—
P_{1dB}	1.0 GHz	dBm	24	26	—
	Insertion Loss State Attenuation State	dBm	20	23	—
Control Current	—	μA	—	—	10
Trise, Tfall	10% to 90% RF, 90% to 10% RF	nS	—	29	—
Ton, Toff	50% Control to 90% RF, 50% Control to 10% RF	nS	—	50	—
Transients	In-band	mV	—	10	—

4. For positive voltage control, external DC blocking capacitors are required on all RF ports (pins 1, 2 and 3).

Lead-Free SOT-25[†]



[†] Reference Application Note M538 for lead-free solder reflow recommendations.

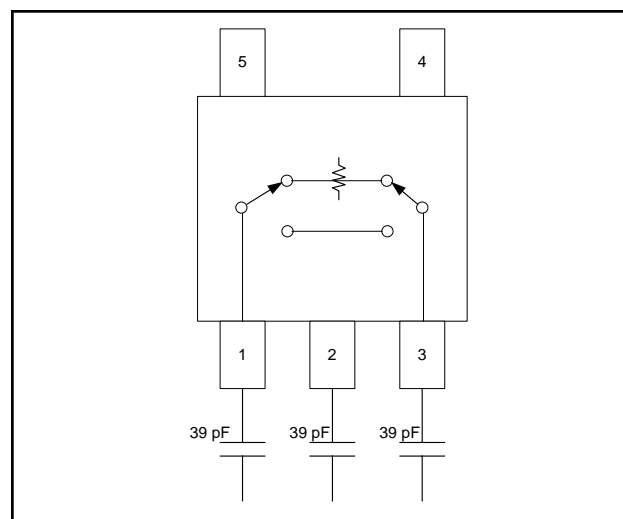
Truth Table^{5,6}

Mode (Control)	V1	V2	Attenuation
Positive ⁵	$0 \pm 0.2\text{V}$ $+2.5\text{V to } +5\text{V}$	$+2.5\text{V to } +5\text{V}$ $0 \pm 0.2\text{V}$	15 dB Reference State
Negative ⁶	$0 \pm 0.2\text{V}$ $-2.5\text{V to } -5\text{V}$	$-2.5\text{V to } -5\text{V}$ $0 \pm 0.2\text{V}$	Reference State 15 dB

5. External DC blocking capacitors are required as noted.

6. If negative control is used, DC blocking capacitors are not required on RF ports and ground.

Positive Control Voltage Schematic

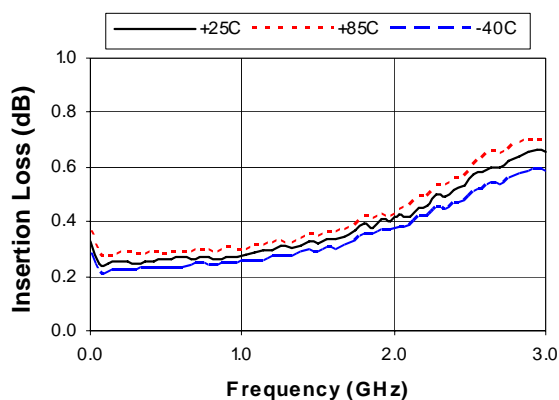


ADVANCED: Data Sheets contain information regarding a product M/A-COM Technology Solutions is considering for development. Performance is based on target specifications, simulated results, and/or prototype measurements. Commitment to develop is not guaranteed.
PRELIMINARY: Data Sheets contain information regarding a product M/A-COM Technology Solutions has under development. Performance is based on engineering tests. Specifications are typical. Mechanical outline has been fixed. Engineering samples and/or test data may be available. Commitment to produce in volume is not guaranteed.

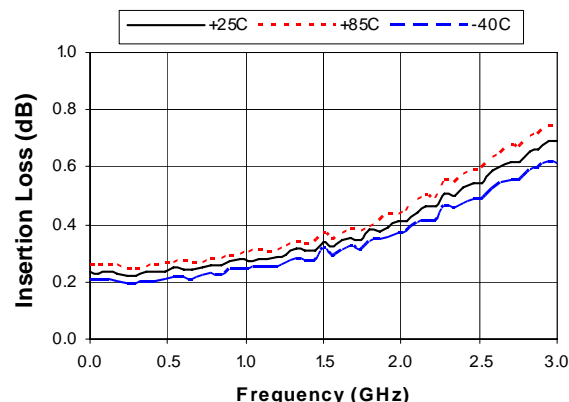
• **North America** Tel: 800.366.2266 / Fax: 978.366.2266
• **Europe** Tel: 44.1908.574.200 / Fax: 44.1908.574.300
• **Asia/Pacific** Tel: 81.44.844.8296 / Fax: 81.44.844.8298
Visit www.macomtech.com for additional data sheets and product information.
M/A-COM Technology Solutions Inc. and its affiliates reserve the right to make changes to the product(s) or information contained herein without notice.

Typical Performance Curves

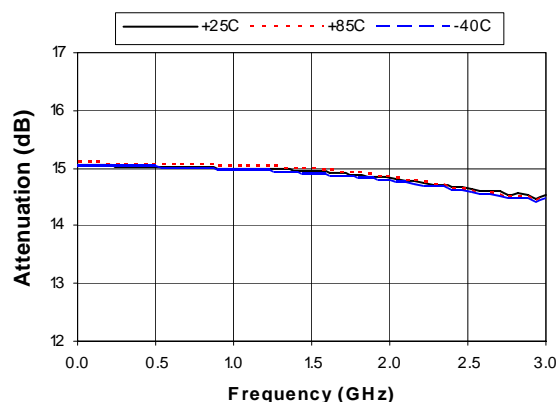
Insertion Loss with Negative Control



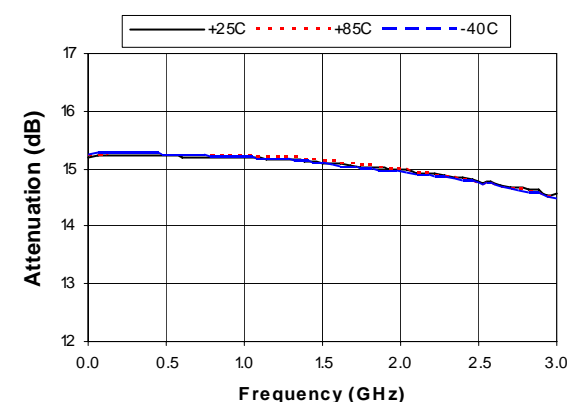
Insertion Loss with Positive Control



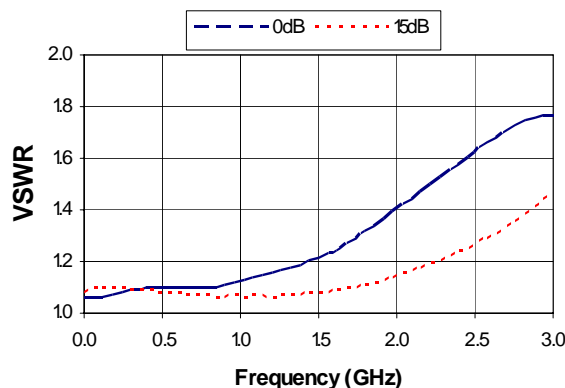
Attenuation with Negative Control



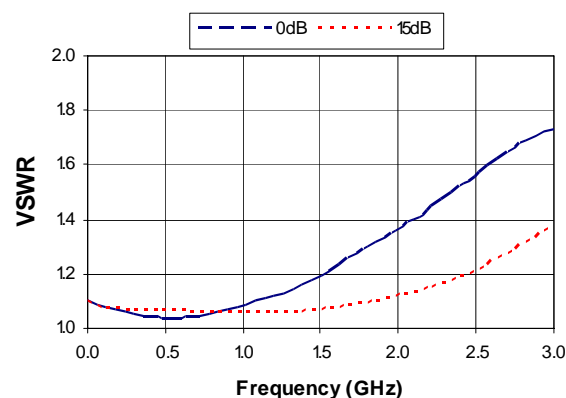
Attenuation with Positive Control



VSWR, 0 and 15 dB States with Negative Control at +25°C



VSWR, 0 and 15 dB States with Positive Control at +25°C



AMEYA360

Components Supply Platform

Authorized Distribution Brand :



Website :

Welcome to visit www.ameya360.com

Contact Us :

➤ Address :

401 Building No.5, JiuGe Business Center, Lane 2301, Yishan Rd
Minhang District, Shanghai , China

➤ Sales :

Direct +86 (21) 6401-6692
Email amall@ameya360.com
QQ 800077892
Skype ameyasales1 ameyasales2

➤ Customer Service :

Email service@ameya360.com

➤ Partnership :

Tel +86 (21) 64016692-8333
Email mkt@ameya360.com