

## Serial-in / Parallel-out Driver Series

# Serial / Parallel 5-input Driver

**BA829**

No.09051EAT02



## ●Description

Serial-in-parallel-out driver is a constant-current output driver with a built-in shift register and a latch circuit to turn on a maximum of 8 LED by a 5-line interface linked to a microcontroller. Output current value of constant-current can be set up to a maximum of 300mA.

## ●Features

- 1) This product can drive a maximum of 300mA.
- 2) When the strobe terminal is controlled by the drive timing pulse, current during a period without driving can be reduced.
- 3) When the data output terminal is used as the next input data, cascade connection becomes possible.
- 4) Digital ground and power ground are separated.
- 5) Latch is built in between the shift register and the driver output.
- 6) Stand-by function is incorporated. (10μA Typ. upon standby)

## ●Applications

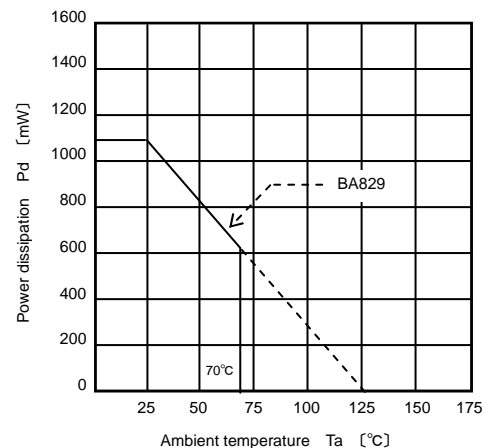
For AV equipment such as, component stereo sets, videos and TV sets, PCs, and control microcontroller mounted equipment.

## ●Absolute maximum ratings

Parameter	Symbol	Limit	Unit
Power supply voltage	V <sub>DD</sub>	-0.3 to +7.0	V
Power dissipation	P <sub>d</sub>	1100*	mW
Input voltage	I <sub>SINK</sub>	-0.3 to V <sub>CC</sub>	V
Output voltage	V <sub>O</sub>	15	V
Operating temperature	T <sub>opr</sub>	-25 to +70	°C
Storage temperature	T <sub>stg</sub>	-55 to +125	°C

\*1 Reduced by 11 mW/°C over 25°C.

## ●Thermal derating curve



●Recommended operating conditions (Topr=-25°C to +70°C)

Parameter	Symbol	Min.	Typ.	Max.	Unit	Condition
Power supply	VCC	4.5	5.0	5.5	V	-
Clock frequency	TCLK	-	-	500	kHz	-
Power setup time	tPset	500	-	-	ns	Fig.4
Clock pulse width	tWC	1	-	-	ns	Fig.4
Data setup time	tDset	300	-	-	ns	Fig.4
Data hold time	tDhold	400	-	-	ns	Fig.4
Latch pulse timing 1	tLT1	600	-	-	ns	Fig.4
Latch pulse timing 2	tLT2	250	-	-	ns	Fig.4
Latch pulse width	tWL	800	-	-	ns	Fig.4
Strobe pulse timing 1	tST1	300	-	-	ns	Fig.4
Strobe pulse width	tws	3	-	-	μs	Fig.4
Voltage between L-GND and P-GND	VG	-	-	0.2	V	-

\* Electric potential is a difference of L-GND and P-GND. Short-circuit near the power source whenever possible.  
However, between L-GND Pin and P-GND Pin, product should be used in a range not exceeding 0.2V.

●Electrical characteristics (Unless otherwise specified, Ta=25°C, Vcc=5.0V)

Parameter	Symbol	Min.	Typ.	Max.	Unit	Condition	Test Circuit
Supply current 1	Icc1	—	10	20	μA	PSW“L”	Fig.1
Supply current 2	Icc2	—	110	158	mA	PSW“H”, STB“H”	Fig.1
Supply current 3	Icc3	—	14	20	mA	PSW“H”, STB“L”	Fig.1
Output ON voltage	VOON	—	0.4	0.6	V	ICCN=300 mA	Fig.1
Output leakage current	IOOFF	—	10	50	μA	V0=13.5V	Fig.1
Data transference time	fCLK	500	—	—	kHz	—	Fig.1
Input high-level voltage	VIH	2.6	—	—	V	—	Fig.2
Input low-level voltage	VIL	—	—	0.8	V	—	Fig.2
Input high-level current	IIH1	—	0.1	10	μA	V1=3.4V,CLK,LATCH,DATA,STB	Fig.1
Input low-level current	IIL1	—	-0.01	-0.1	mA	V1=0.4V,CLK,LATCH,DATA,STB	Fig.1
Out put high-level voltage	VDDH	2.8	3.0	—	V	IDOH=-400μA	Fig.1
Output low-level voltage	VDDL	—	0.3	0.4	V	IDOL=1.6mA	Fig.1
Data output transmission delay	tDLH	—	0.6	1.0	μs	RLD=10kΩ	Fig.4
Data output transmission delay	tDHL	—	0.6	2.0	μs	RLD=10kΩ	Fig.4
Print output transmission delay	tOLH	—	—	10	μs	RL=560kΩ560, V0=13.5V	Fig.4
Print output transmission delay	toHL	—	—	10	μs	RL=560kΩ560, V0=13.5V	Fig.4
Input high-level current	IIH2	—	0.04	0.1	mA	V1=3.4V,PSW	Fig.1
Input low-level current	IIL2	—	0.1	10	μA	V1=0.4V,PSW	Fig.1

●Block diagram

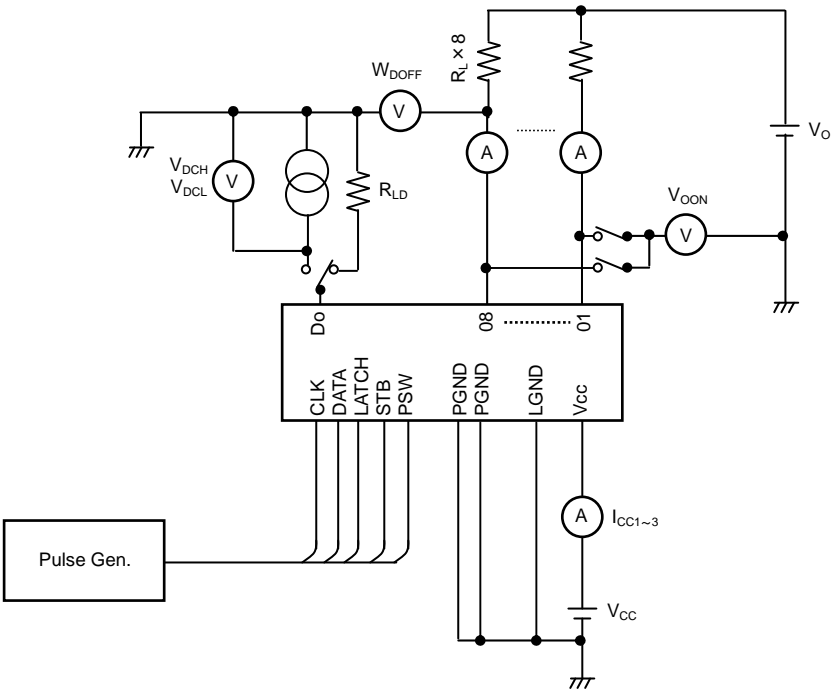


Fig.1

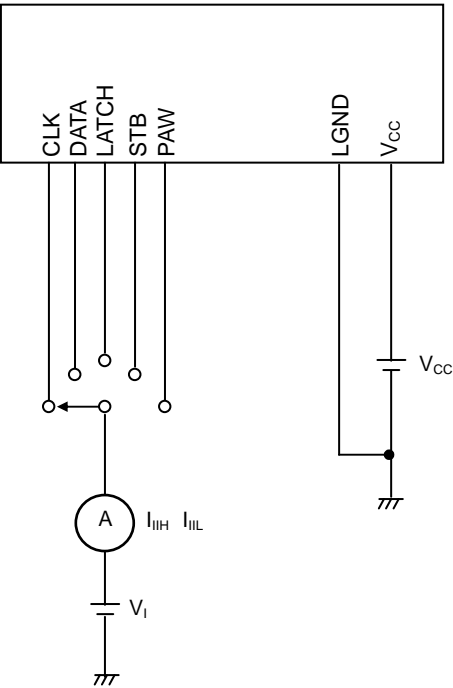


Fig.2

### ●Block diagram

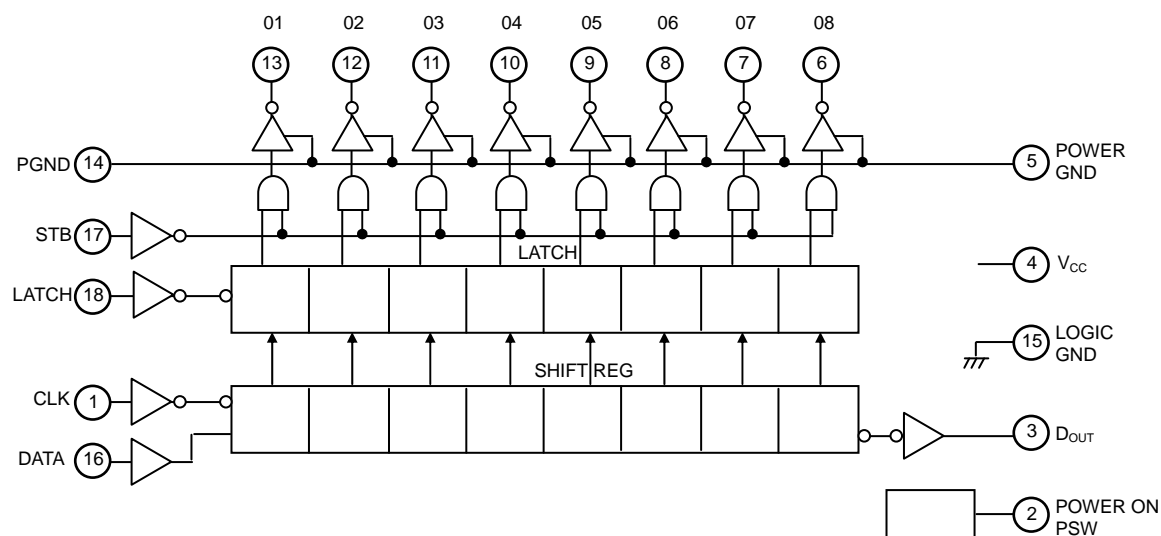


Fig.3

### ●Pin descriptions

PIN No.	Terminal	I/O	Function
1	CLK	I	Clock input
2	PSW	I	Power switch
3	DOUT	O	Cascade output
4	VCC	-	Power supply
5	PGND	-	GND
6	O8	O	Parallel data output
7	O7	O	
8	O6	O	
9	O5	O	
10	O4	O	
11	O3	O	
12	O2	O	
13	O1	O	
14	PGND	-	GND
15	LGND	-	GND
16	DATA	I	Serial data input
17	STB	I	Strobe input, "L" active
18	LATCH	I	Latch input

### ●Description of operation

BA829 is configured internally as shown in the logic circuit diagram. Terminals of clock (CLK), data (DATA), latch (LATCH), strobe (STB), and power switch (PSW) are available as input.

Data input is synchronized with the clock, read serially during the rise time and latched at the rise time edge of the shifted shift register. Latched data appears on the output terminal of O1-O8 by the strobe input. Pulse width is the same as that of the strobe input. Data output terminal DOUT, is a terminal used for cascade connection of the IC, where the output of the final stage of the shift register has appeared, and is connected to the next data input terminal DATA. In this case, when the clock and the strobe are used in conjunction, output terminal can be increased by 8 bits at a time.

To affect the standby mode, set the power switch to "L".

# ●Timing chart

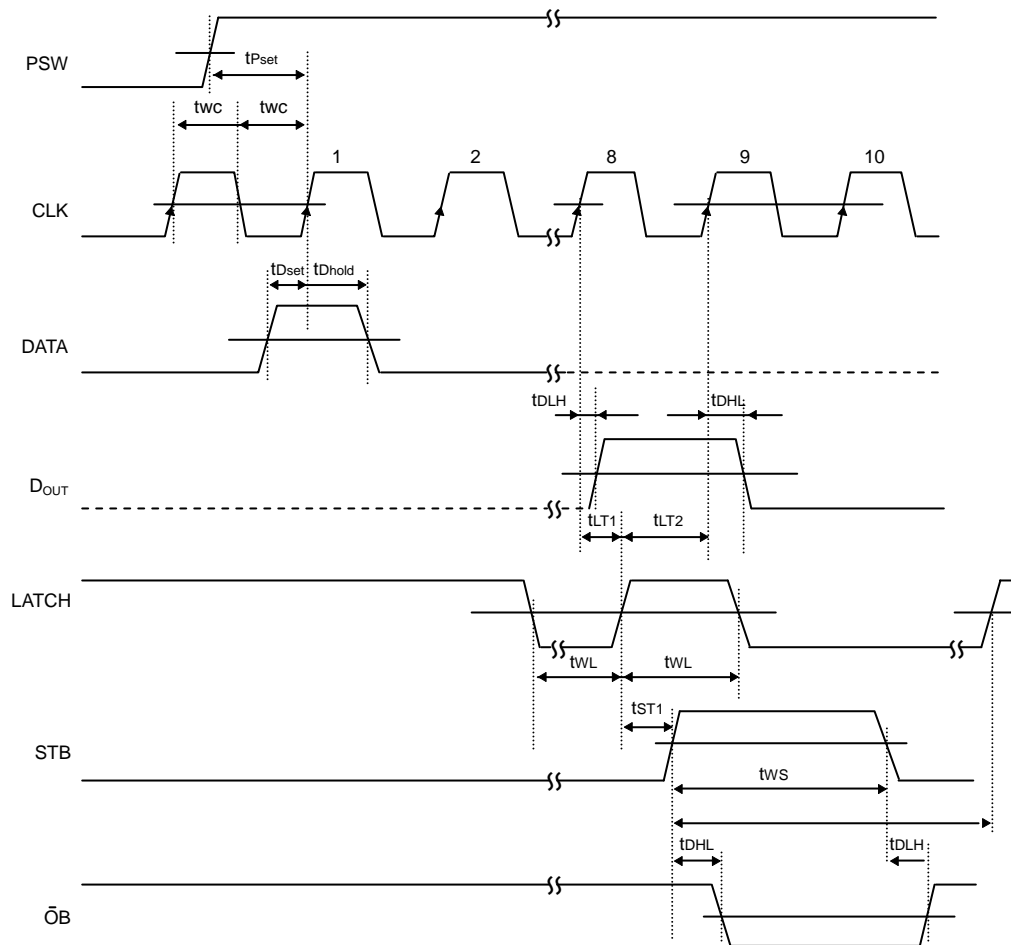
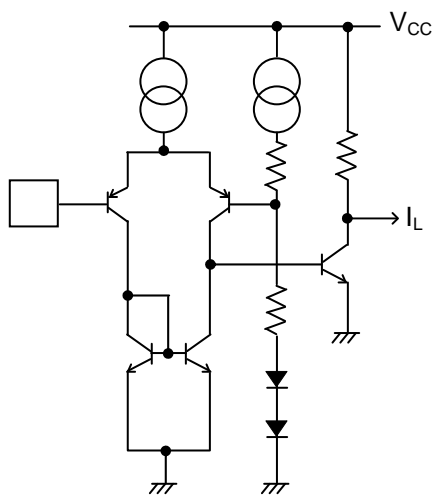
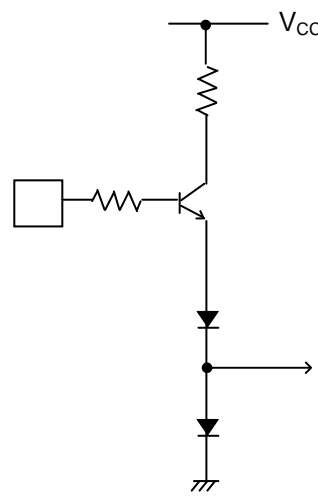


Fig.4

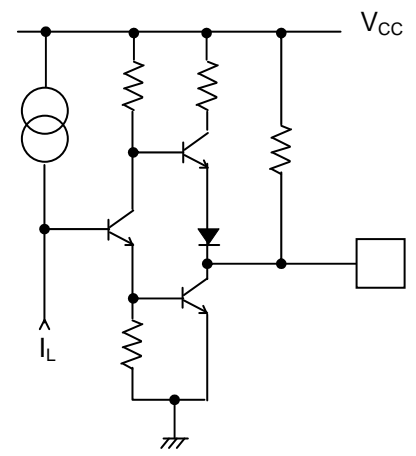
# ●Interfaces



(a) INPUT (CLK , DATA , LATCH , STB)



(b) INPUT (PSW)

(c) OUTPUT (D<sub>OUT</sub>)

## ●Operation Notes

### 1. Absolute maximum ratings

An excess in the absolute maximum ratings, such as supply voltage, temperature range of operating conditions, etc., can break down the devices, thus making impossible to identify breaking mode, such as a short circuit or an open circuit. If any over rated values will expect to exceed the absolute maximum ratings, consider adding circuit protection devices, such as fuses.

### 2. Connecting the power supply connector backward

Connecting of the power supply in reverse polarity can damage IC. Take precautions when connecting the power supply lines. An external direction diode can be added.

### 3. Power supply lines

Design PCB layout pattern to provide low impedance GND and supply lines. To obtain a low noise ground and supply line, separate the ground section and supply lines of the digital and analog blocks. Furthermore, for all power supply terminals to ICs, connect a capacitor between the power supply and the GND terminal. When applying electrolytic capacitors in the circuit, note that capacitance characteristic values are reduced at low temperatures.

### 4. GND voltage

The potential of GND pin must be minimum potential in all operating conditions.

### 5. Inter-pin shorts and mounting errors

Use caution when positioning the IC for mounting on printed circuit boards. The IC may be damaged if there is any connection error or if pins are shorted together.

### 6. Actions in strong electromagnetic field

Use caution when using the IC in the presence of a strong electromagnetic field as doing so may cause the IC to malfunction.

### 7. Testing on application boards

When testing the IC on an application board, connecting a capacitor to a pin with low impedance subjects the IC to stress. Always discharge capacitors after each process or step. Always turn the IC's power supply off before connecting it to or removing it from a jig or fixture during the inspection process. Ground the IC during assembly steps as an antistatic measure. Use similar precaution when transporting or storing the IC.

### 8. Regarding input pin of the IC

This monolithic IC contains P+ isolation and P substrate layers between adjacent elements in order to keep them isolated. P-N junctions are formed at the intersection of these P layers with the N layers of other elements, creating a parasitic diode or transistor. For example, the relation between each potential is as follows:

When  $GND > Pin A$  and  $GND > Pin B$ , the P-N junction operates as a parasitic diode.

When  $GND > Pin B$ , the P-N junction operates as a parasitic transistor.

Parasitic diodes can occur inevitable in the structure of the IC. The operation of parasitic diodes can result in mutual interference among circuits, operational faults, or physical damage. Accordingly, methods by which parasitic diodes operate, such as applying a voltage that is lower than the GND (P substrate) voltage to an input pin, should not be used.

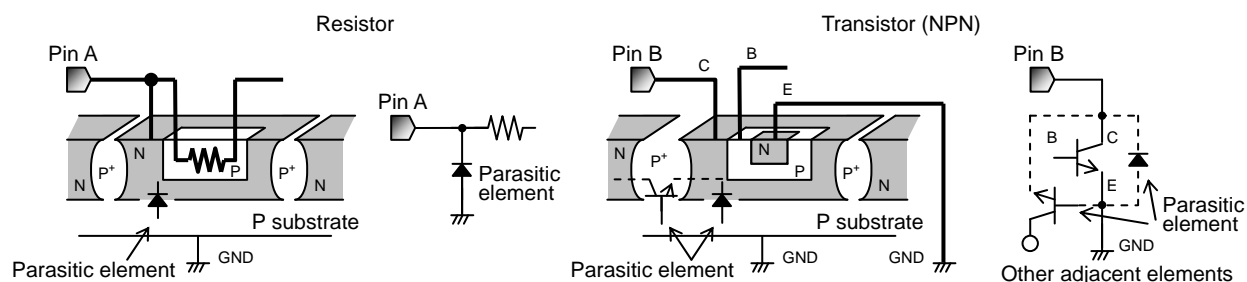


Fig.5 Example of IC structure

### 9. Ground Wiring Pattern

When using both small signal and large current GND patterns, it is recommended to isolate the two ground patterns, placing a single ground point at the ground potential of application so that the pattern wiring resistance and voltage variations caused by large currents do not cause variations in the small signal ground voltage. Be careful not to change the GND wiring pattern of any external components, either.

●Ordering part number

B	D
---	---

Part No.

8	2	9
---	---	---

Part No.

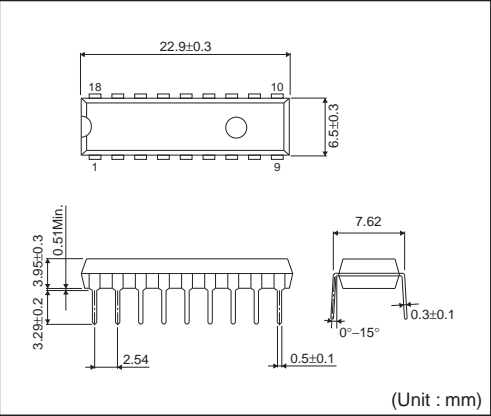
--

Package  
None:DIP18

--	--

Packaging and forming specification  
None: Tube

DIP18



<Tape and Reel information>

Container	Tube
Quantity	1000pcs
Direction of feed	Direction of products is fixed in a container tube

\*Order quantity needs to be multiple of the minimum quantity.

# Notice

## Precaution on using ROHM Products

- Our Products are designed and manufactured for application in ordinary electronic equipments (such as AV equipment, OA equipment, telecommunication equipment, home electronic appliances, amusement equipment, etc.). If you intend to use our Products in devices requiring extremely high reliability (such as medical equipment <sup>(Note 1)</sup>, transport equipment, traffic equipment, aircraft/spacecraft, nuclear power controllers, fuel controllers, car equipment including car accessories, safety devices, etc.) and whose malfunction or failure may cause loss of human life, bodily injury or serious damage to property ("Specific Applications"), please consult with the ROHM sales representative in advance. Unless otherwise agreed in writing by ROHM in advance, ROHM shall not be in any way responsible or liable for any damages, expenses or losses incurred by you or third parties arising from the use of any ROHM's Products for Specific Applications.

(Note1) Medical Equipment Classification of the Specific Applications

JAPAN	USA	EU	CHINA
CLASS III	CLASS III	CLASS II b	CLASS III
CLASS IV		CLASS III	

- ROHM designs and manufactures its Products subject to strict quality control system. However, semiconductor products can fail or malfunction at a certain rate. Please be sure to implement, at your own responsibilities, adequate safety measures including but not limited to fail-safe design against the physical injury, damage to any property, which a failure or malfunction of our Products may cause. The following are examples of safety measures:
  - Installation of protection circuits or other protective devices to improve system safety
  - Installation of redundant circuits to reduce the impact of single or multiple circuit failure
- Our Products are designed and manufactured for use under standard conditions and not under any special or extraordinary environments or conditions, as exemplified below. Accordingly, ROHM shall not be in any way responsible or liable for any damages, expenses or losses arising from the use of any ROHM's Products under any special or extraordinary environments or conditions. If you intend to use our Products under any special or extraordinary environments or conditions (as exemplified below), your independent verification and confirmation of product performance, reliability, etc. prior to use, must be necessary:
  - Use of our Products in any types of liquid, including water, oils, chemicals, and organic solvents
  - Use of our Products outdoors or in places where the Products are exposed to direct sunlight or dust
  - Use of our Products in places where the Products are exposed to sea wind or corrosive gases, including Cl<sub>2</sub>, H<sub>2</sub>S, NH<sub>3</sub>, SO<sub>2</sub>, and NO<sub>2</sub>
  - Use of our Products in places where the Products are exposed to static electricity or electromagnetic waves
  - Use of our Products in proximity to heat-producing components, plastic cords, or other flammable items
  - Sealing or coating our Products with resin or other coating materials
  - Use of our Products without cleaning residue of flux (even if you use no-clean type fluxes, cleaning residue of flux is recommended); or Washing our Products by using water or water-soluble cleaning agents for cleaning residue after soldering
  - Use of the Products in places subject to dew condensation
- The Products are not subject to radiation-proof design.
- Please verify and confirm characteristics of the final or mounted products in using the Products.
- In particular, if a transient load (a large amount of load applied in a short period of time, such as pulse. is applied, confirmation of performance characteristics after on-board mounting is strongly recommended. Avoid applying power exceeding normal rated power; exceeding the power rating under steady-state loading condition may negatively affect product performance and reliability.
- De-rate Power Dissipation (Pd) depending on Ambient temperature (Ta). When used in sealed area, confirm the actual ambient temperature.
- Confirm that operation temperature is within the specified range described in the product specification.
- ROHM shall not be in any way responsible or liable for failure induced under deviant condition from what is defined in this document.

## Precaution for Mounting / Circuit board design

- When a highly active halogenous (chlorine, bromine, etc.) flux is used, the residue of flux may negatively affect product performance and reliability.
- In principle, the reflow soldering method must be used; if flow soldering method is preferred, please consult with the ROHM representative in advance.

For details, please refer to ROHM Mounting specification



## Precautions Regarding Application Examples and External Circuits

1. If change is made to the constant of an external circuit, please allow a sufficient margin considering variations of the characteristics of the Products and external components, including transient characteristics, as well as static characteristics.
2. You agree that application notes, reference designs, and associated data and information contained in this document are presented only as guidance for Products use. Therefore, in case you use such information, you are solely responsible for it and you must exercise your own independent verification and judgment in the use of such information contained in this document. ROHM shall not be in any way responsible or liable for any damages, expenses or losses incurred by you or third parties arising from the use of such information.

## Precaution for Electrostatic

This Product is electrostatic sensitive product, which may be damaged due to electrostatic discharge. Please take proper caution in your manufacturing process and storage so that voltage exceeding the Products maximum rating will not be applied to Products. Please take special care under dry condition (e.g. Grounding of human body / equipment / solder iron, isolation from charged objects, setting of ionizer, friction prevention and temperature / humidity control).

## Precaution for Storage / Transportation

1. Product performance and soldered connections may deteriorate if the Products are stored in the places where:
  - [a] the Products are exposed to sea winds or corrosive gases, including Cl<sub>2</sub>, H<sub>2</sub>S, NH<sub>3</sub>, SO<sub>2</sub>, and NO<sub>2</sub>
  - [b] the temperature or humidity exceeds those recommended by ROHM
  - [c] the Products are exposed to direct sunshine or condensation
  - [d] the Products are exposed to high Electrostatic
2. Even under ROHM recommended storage condition, solderability of products out of recommended storage time period may be degraded. It is strongly recommended to confirm solderability before using Products of which storage time is exceeding the recommended storage time period.
3. Store / transport cartons in the correct direction, which is indicated on a carton with a symbol. Otherwise bent leads may occur due to excessive stress applied when dropping of a carton.
4. Use Products within the specified time after opening a humidity barrier bag. Baking is required before using Products of which storage time is exceeding the recommended storage time period.

## Precaution for Product Label

QR code printed on ROHM Products label is for ROHM's internal use only.

## Precaution for Disposition

When disposing Products please dispose them properly using an authorized industry waste company.

## Precaution for Foreign Exchange and Foreign Trade act

Since our Products might fall under controlled goods prescribed by the applicable foreign exchange and foreign trade act, please consult with ROHM representative in case of export.

## Precaution Regarding Intellectual Property Rights

1. All information and data including but not limited to application example contained in this document is for reference only. ROHM does not warrant that foregoing information or data will not infringe any intellectual property rights or any other rights of any third party regarding such information or data. ROHM shall not be in any way responsible or liable for infringement of any intellectual property rights or other damages arising from use of such information or data.:
2. No license, expressly or implied, is granted hereby under any intellectual property rights or other rights of ROHM or any third parties with respect to the information contained in this document.

## Other Precaution

1. This document may not be reprinted or reproduced, in whole or in part, without prior written consent of ROHM.
2. The Products may not be disassembled, converted, modified, reproduced or otherwise changed without prior written consent of ROHM.
3. In no event shall you use in any way whatsoever the Products and the related technical information contained in the Products or this document for any military purposes, including but not limited to, the development of mass-destruction weapons.
4. The proper names of companies or products described in this document are trademarks or registered trademarks of ROHM, its affiliated companies or third parties.

**General Precaution**

1. Before you use our Products, you are requested to carefully read this document and fully understand its contents. ROHM shall not be in any way responsible or liable for failure, malfunction or accident arising from the use of any ROHM's Products against warning, caution or note contained in this document.
2. All information contained in this document is current as of the issuing date and subject to change without any prior notice. Before purchasing or using ROHM's Products, please confirm the latest information with a ROHM sales representative.
3. The information contained in this document is provided on an "as is" basis and ROHM does not warrant that all information contained in this document is accurate and/or error-free. ROHM shall not be in any way responsible or liable for any damages, expenses or losses incurred by you or third parties resulting from inaccuracy or errors of or concerning such information.

# AMEYA360

## Components Supply Platform

### Authorized Distribution Brand :



### Website :

Welcome to visit [www.ameya360.com](http://www.ameya360.com)

### Contact Us :

#### ➤ Address :

401 Building No.5, JiuGe Business Center, Lane 2301, Yishan Rd  
Minhang District, Shanghai , China

#### ➤ Sales :

Direct +86 (21) 6401-6692

Email [amall@ameya360.com](mailto:amall@ameya360.com)

QQ 800077892

Skype ameyasales1 ameyasales2

#### ➤ Customer Service :

Email [service@ameya360.com](mailto:service@ameya360.com)

#### ➤ Partnership :

Tel +86 (21) 64016692-8333

Email [mkt@ameya360.com](mailto:mkt@ameya360.com)