

NOTES:

1. MATERIALS AND FINISHES:

BODY - BRASS, NICKEL PLATING
CONTACT - BRASS, GOLD PLATING
INSULATOR - PTFE

2. ELECTRICAL:

- A. IMPEDANCE: 50 OHM
B. FREQUENCY RANGE: DC - 6 GHz
C. VSWR(RETURN LOSS): 1.20 (-20.82 dB), MAX.

3. MECHANICAL:

- A. DURABILITY: 100 CYCLES MIN.
B. TEMPERATURE RANGE: -65° C TO +165° C
C. THIS CONNECTOR WILL WITHSTAND 40 LBS MIN. AXIAL (PULL AND PUSH) FORCE AND 30 LBS MIN. BENDING LOAD WHEN INSTALLED ON A 1.5 MM OR 2 MM AL 5052 PANEL. FACTOR OF SAFETY OF 3 ALREADY TAKEN INTO ACCOUNT. FOR FURTHER INFO PLEASE REFER TO DE2536
D. TORQUE REQUIRED TO THREAD PART INTO PANEL: 20 IN-LB RECOMMENDED
E. SHELF LIFE OF THREAD ADHESIVE IS 1 YEAR MINIMUM BEFORE INSTALLING, AND UP TO 4 YEARS DEPENDING ON STORAGE CONDITIONS. FOR BEST RESULTS, STORE BETWEEN 4 AND 38°C.
F. THREAD ADHESIVE FOR THREAD LOCKING SHOULD BE CURED FOR 24 HOURS AFTER INSTALLING, AND MAY NOT WORK FOR REPEATED DISASSEMBLY.

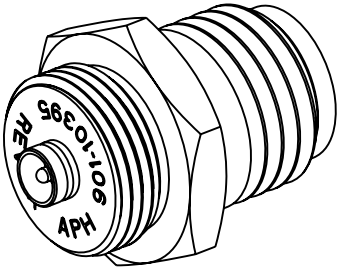
4. PACKAGING:

- A. PACKAGE IN TRAY, 100 PCS PER TRAY.
B. MARKING: TRAY TO BE MARKED
"AMPHENOL RF, 901-10395, AND DATE CODE"

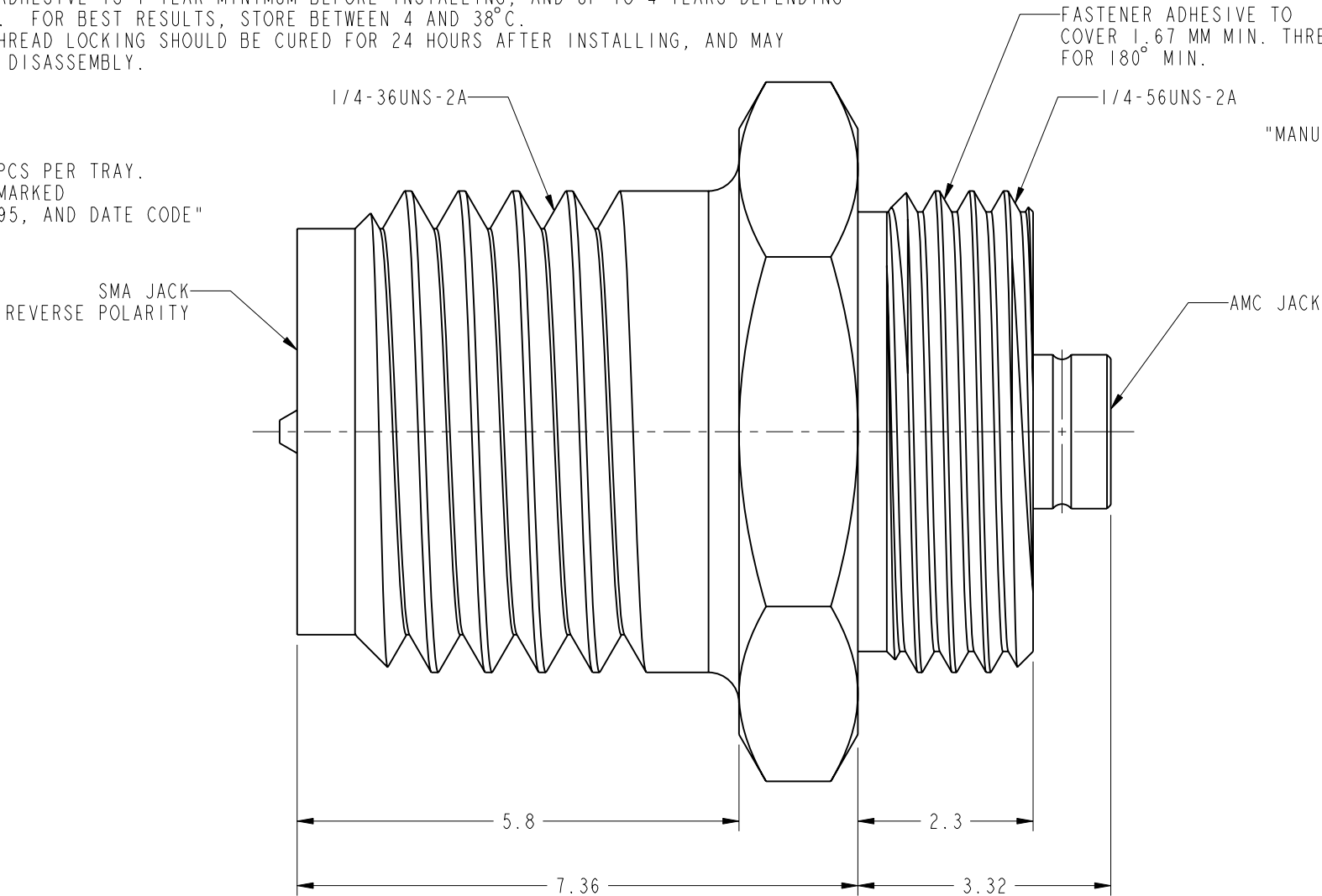
THIRD ANGLE PROJ. 

REVISIONS

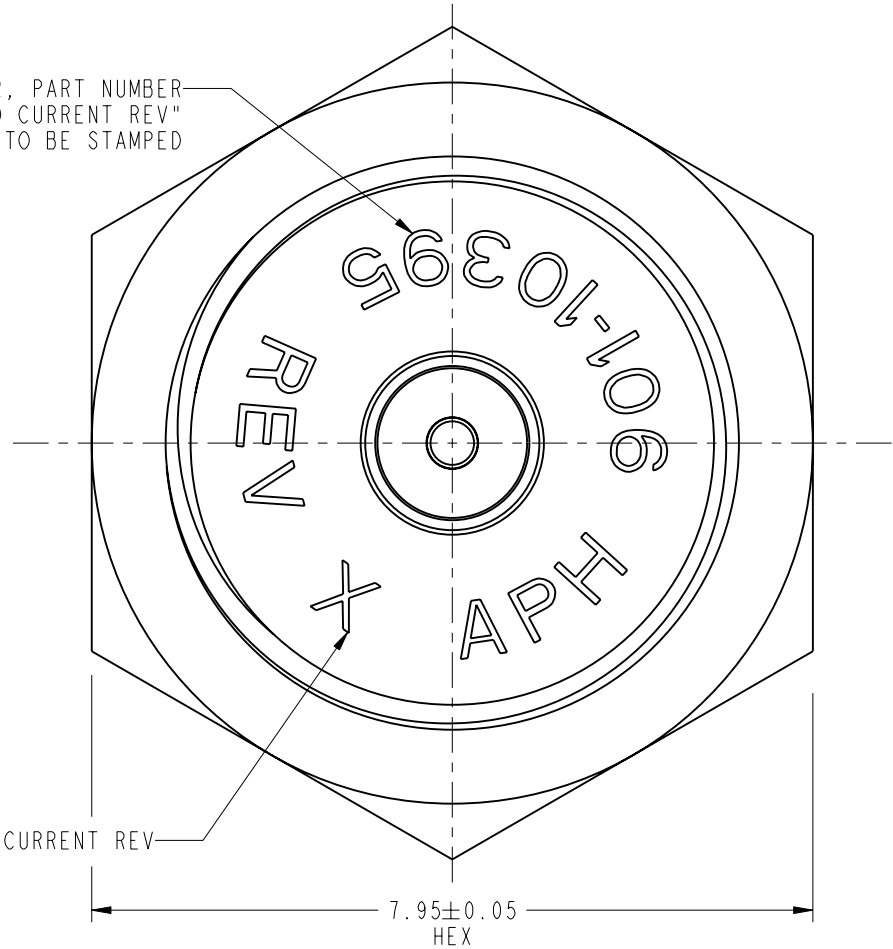
REV	DESCRIPTION	DATE	ECO	APPR
A	RELEASE TO MFG.	14-Aug-13	49644	JTS



SCALE 4.000



"MANUFACTURER, PART NUMBER
AND CURRENT REV"
MARKING TO BE STAMPED



CUSTOMER OUTLINE DRAWING
ALL OTHER SHEETS ARE FOR INTERNAL USE ONLY

UNLESS OTHERWISE SPECIFIED, DIMENSIONS ARE IN METRIC AND TOLERANCES ARE:
<0.5mm ± 0.05mm 0.5 - 6mm ±0.1mm 6 - 30mm ±0.2mm 30 - 120mm ± 0.3mm ANGLES ±1°

NOTICE - These drawings, specifications, or other data (1) are, and remain the property of Amphenol corp. (2) must be returned upon request; and (3) are confidential and not to be disclosed to any person other than those to whom they are given by Amphenol Corp. the furnishing of these drawings, specifications, or other data by Amphenol Corp., or to any other person to anyone for any purpose is not to be regarded by implication or otherwise in any manner licensing, granting rights to permitting such holder or any other person to manufacture, use or sell any product, process or design, patented or otherwise, that may in any way be related to or disclosed by said drawings, specifications, or other data.

MATERIAL

SEE NOTES

REFERENCE
EAR # 5211

CONFIGURATION LEVEL:

FINISH

DRAWN

R. RAJAN

ENGINEER

R. RAJAN

APPROVED

K. CAPOZZI

CAD FILE

DATE

28-Jun-12

DATE

28-Jun-12

DATE

14-Aug-13

TITLE

SMA REVERSE POLARITY
BULKHEAD JACK TO
AMC JACK ADAPTER

SCALE: 12.0:1.0

DWG SIZE

B

SHEET 2 OF 2

REV

A

Amphenol RF

www.amphenolrf.com

DRAWING NO. 901-10395

ITEM NO. 901-10395

PART NO. 901-10395

Authorized Distribution Brand :



Website :

Welcome to visit www.ameya360.com

Contact Us :

➤ Address :

401 Building No.5, JiuGe Business Center, Lane 2301, Yishan Rd
Minhang District, Shanghai , China

➤ Sales :

Direct +86 (21) 6401-6692

Email amall@ameya360.com

QQ 800077892

Skype ameyasales1 ameyasales2

➤ Customer Service :

Email service@ameya360.com

➤ Partnership :

Tel +86 (21) 64016692-8333

Email mkt@ameya360.com