

# CM1248-04QG

## Low Capacitance Transient Voltage Suppressors / ESD Protectors

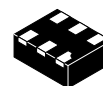
### Features

- Low I/O Capacitance at 10 pF at 0 V
- In-System ESD Protection to  $\pm 15$  kV Contact Discharge, per the IEC 61000-4-2 International Standard
- Compact SMT Package Saves Board Space and Facilitates Layout in Space-Critical Applications
- Each I/O Pin Can Withstand over 1000 ESD Strikes
- These Devices are Pb-Free and are RoHS Compliant



ON Semiconductor®

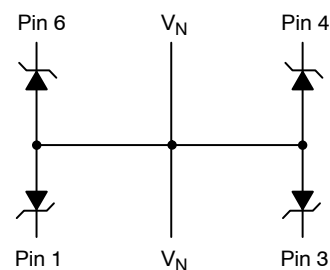
<http://onsemi.com>



UDFN-6  
QG SUFFIX  
CASE 517BM

### BLOCK DIAGRAM

CM1248-04QG



### MARKING DIAGRAM



LR = Specific Device Code

### ORDERING INFORMATION

Device	Package	Shipping†
CM1248-04QG	uDFN-0.4 mm (Pb-Free)	3000/Tape & Reel

†For information on tape and reel specifications, including part orientation and tape sizes, please refer to our Tape and Reel Packaging Specification Brochure, BRD8011/D.

# CM1248-04QG

## PACKAGE / PINOUT DIAGRAMS

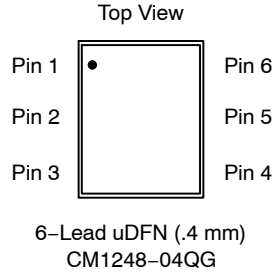


Table 1. PIN DESCRIPTIONS

Pins	Name	Description
(Refer to package / pinout diagrams)	CHx	The cathode of the respective TVS diode, which should be connected to the node requiring transient voltage protection.
(Refer to package / pinout diagrams)	V <sub>N</sub>	The anode of the TVS diodes.

## SPECIFICATIONS

Table 2. ABSOLUTE MAXIMUM RATINGS

Parameter	Rating	Units
Storage Temperature Range	-65 to +150	°C

Stresses exceeding Maximum Ratings may damage the device. Maximum Ratings are stress ratings only. Functional operation above the Recommended Operating Conditions is not implied. Extended exposure to stresses above the Recommended Operating Conditions may affect device reliability.

Table 3. STANDARD OPERATING CONDITIONS

Parameter	Rating	Units
Operating Temperature	-40 to +85	°C

Table 4. ELECTRICAL OPERATING CHARACTERISTICS (Note 1)

Symbol	Parameter	Conditions	Min	Typ	Max	Units
C <sub>IN</sub>	Channel Input Capacitance	T <sub>A</sub> = 25°C, 0 VDC, 1 MHz; Note 2		10		pF
		0 VDC, 1 MHz; Note 1	7		15	pF
ΔC <sub>IN</sub>	Differential Channel I/O to GND Capacitance	T <sub>A</sub> = 25°C, 2.5 VDC, 1 MHz; Note 2		0.19		pF
V <sub>RSO</sub>	Reverse Stand-off Voltage	I <sub>R</sub> = 10 μA, T <sub>A</sub> = 25°C	5.5			V
		I <sub>R</sub> = 1 mA, T <sub>A</sub> = 25°C	6.1			V
I <sub>LEAK</sub>	Leakage Current	V <sub>IN</sub> = 5.0 VDC, T <sub>A</sub> = 25°C			0.25	μA
		V <sub>IN</sub> = 5.0 VDC, Note 1			0.75	μA
V <sub>SIG</sub>	Small Signal Clamp Voltage Positive Clamp Negative Clamp	I = 10 mA, T <sub>A</sub> = 25°C I = -10 mA, T <sub>A</sub> = 25°C		6.8 -0.89		V
V <sub>ESD</sub>	ESD Withstand Voltage Contact Discharge per IEC 61000-4-2 standard	T <sub>A</sub> = 25°C (Notes 2, 4 and 5)	±15			kV
R <sub>D</sub>	Diode Dynamic Resistance Forward Conduction Reverse Conduction	T <sub>A</sub> = 25°C (Notes 2 and 3)		0.57 1.36		Ω

1. All parameters specified at T<sub>A</sub> = -40°C to +85°C unless otherwise noted.
2. These parameters guaranteed by design and characterization.
3. Human Body Model per MIL-STD-883, Method 3015, C<sub>Discharge</sub> = 100 pF, R<sub>Discharge</sub> = 1.5 KΩ, V<sub>N</sub> grounded.
4. Standard IEC 61000-4-2 with C<sub>Discharge</sub> = 150 pF, R<sub>Discharge</sub> = 330 Ω, V<sub>N</sub> grounded.
5. These measurements performed with no external capacitor on Pin<sub>x</sub>.

## PERFORMANCE INFORMATION

### Diode Capacitance

Typical diode capacitance with respect to positive TVS cathode voltage (reverse voltage across the diode) is given in Diode Capacitance vs. Reverse Voltage.

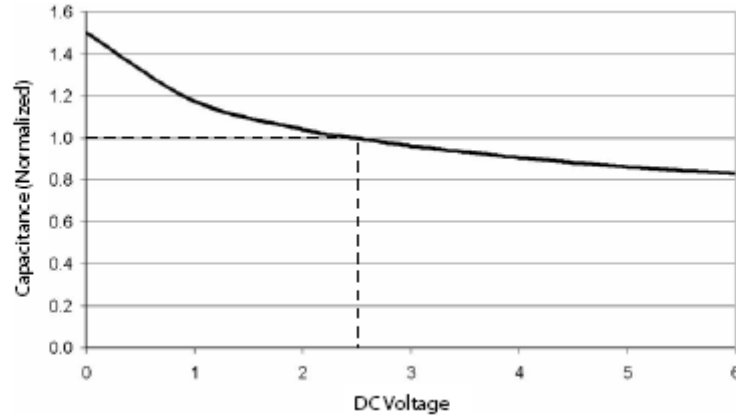


Figure 1. Diode Capacitance vs. Reverse Voltage

### Typical High Current Diode Characteristics

Measurements are made in pulsed mode with a nominal pulse width of 0.7 ms.

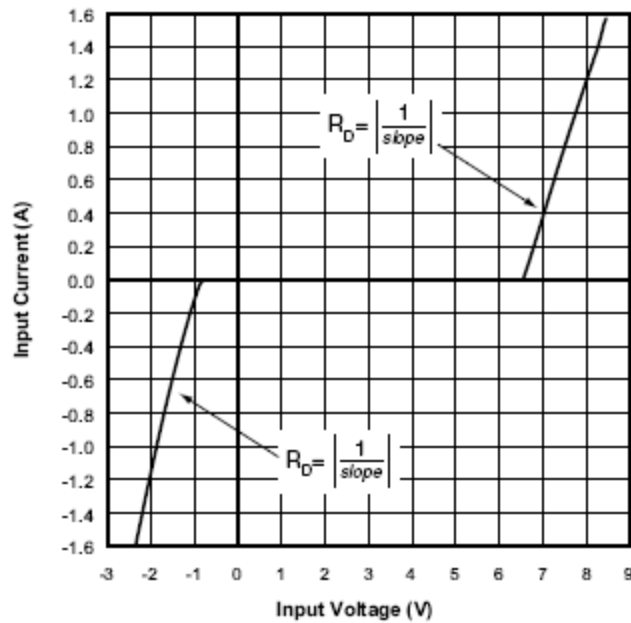
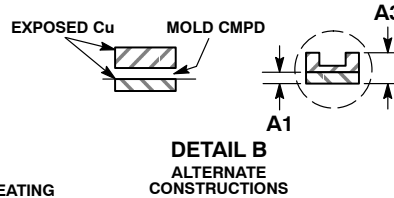
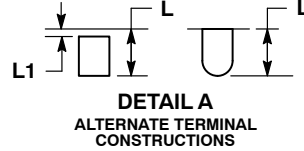
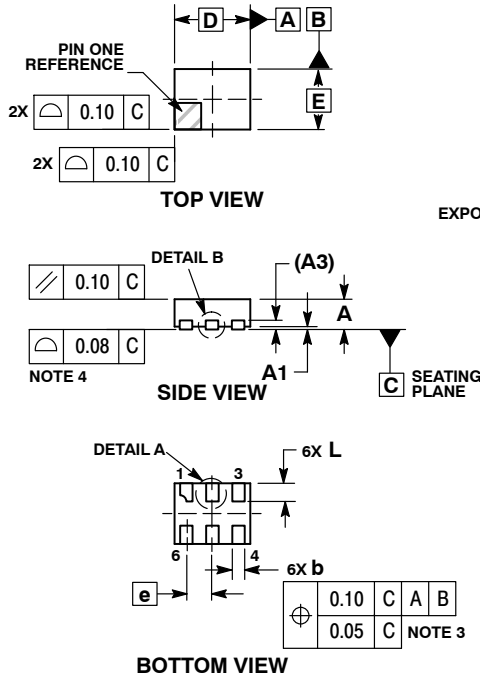


Figure 2. Typical Input VI Characteristics  
(Pulse-mode Measurements, Pulse Width = 0.7 ms nominal)

# CM1248-04QG

## PACKAGE DIMENSIONS

UDFN6, 1.25x1, 0.4P  
CASE 517BM-01  
ISSUE O

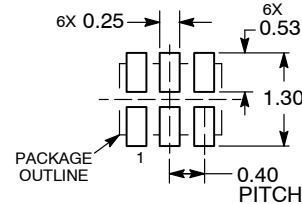


### NOTES:

1. DIMENSIONING AND TOLERANCING PER ASME Y14.5M, 1994.
2. CONTROLLING DIMENSION: MILLIMETERS.
3. DIMENSION b APPLIES TO PLATED TERMINAL AND IS MEASURED BETWEEN 0.15 AND 0.30 MM FROM TERMINAL TIP.
4. COPLANARITY APPLIES TO THE EXPOSED PAD AS WELL AS THE TERMINALS.

DIM	MILLIMETERS	
	MIN	MAX
A	0.45	0.55
A1	0.00	0.05
A3	0.15	REF
b	0.15	0.25
D	1.25	BSC
E	1.00	BSC
e	0.40	BSC
L	0.20	0.40
L1	---	0.15

### RECOMMENDED SOLDERING FOOTPRINT\*



DIMENSION: MILLIMETERS

\*For additional information on our Pb-Free strategy and soldering details, please download the ON Semiconductor Soldering and Mounting Techniques Reference Manual, SOLDERRM/D.

ON Semiconductor and are registered trademarks of Semiconductor Components Industries, LLC (SCILLC). SCILLC reserves the right to make changes without further notice to any products herein. SCILLC makes no warranty, representation or guarantee regarding the suitability of its products for any particular purpose, nor does SCILLC assume any liability arising out of the application or use of any product or circuit, and specifically disclaims any and all liability, including without limitation special, consequential or incidental damages. "Typical" parameters which may be provided in SCILLC data sheets and/or specifications can and do vary in different applications and actual performance may vary over time. All operating parameters, including "Typicals" must be validated for each customer application by customer's technical experts. SCILLC does not convey any license under its patent rights nor the rights of others. SCILLC products are not designed, intended, or authorized for use as components in systems intended for surgical implant into the body, or other applications intended to support or sustain life, or for any other application in which the failure of the SCILLC product could create a situation where personal injury or death may occur. Should Buyer purchase or use SCILLC products for any such unintended or unauthorized application, Buyer shall indemnify and hold SCILLC and its officers, employees, subsidiaries, affiliates, and distributors harmless against all claims, costs, damages, and expenses, and reasonable attorney fees arising out of, directly or indirectly, any claim of personal injury or death associated with such unintended or unauthorized use, even if such claim alleges that SCILLC was negligent regarding the design or manufacture of the part. SCILLC is an Equal Opportunity/Affirmative Action Employer. This literature is subject to all applicable copyright laws and is not for resale in any manner.

### PUBLICATION ORDERING INFORMATION

**LITERATURE FULFILLMENT:**  
Literature Distribution Center for ON Semiconductor  
P.O. Box 5163, Denver, Colorado 80217 USA  
Phone: 303-675-2175 or 800-344-3860 Toll Free USA/Canada  
Fax: 303-675-2176 or 800-344-3867 Toll Free USA/Canada  
Email: orderlit@onsemi.com

**N. American Technical Support:** 800-282-9855 Toll Free  
USA/Canada  
**Europe, Middle East and Africa Technical Support:**  
Phone: 421 33 790 2910  
**Japan Customer Focus Center**  
Phone: 81-3-5773-3850

**ON Semiconductor Website:** [www.onsemi.com](http://www.onsemi.com)

**Order Literature:** <http://www.onsemi.com/orderlit>

For additional information, please contact your local Sales Representative

CM1248-04QG/D

# AMEYA360

Components Supply Platform

Authorized Distribution Brand :



Website :

Welcome to visit [www.ameya360.com](http://www.ameya360.com)

Contact Us :

➤ Address :

401 Building No.5, JiuGe Business Center, Lane 2301, Yishan Rd  
Minhang District, Shanghai , China

➤ Sales :

Direct     +86 (21) 6401-6692  
  
Email       amall@ameya360.com  
  
QQ         800077892  
  
Skype       ameyasales1 ameyasales2

➤ Customer Service :

Email       service@ameya360.com

➤ Partnership :

Tel         +86 (21) 64016692-8333  
  
Email       mkt@ameya360.com