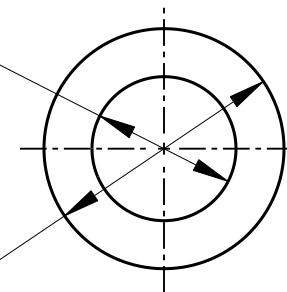


3/8"DIA



5/8"DIA

NOTES:

MATERIAL: PAPER BASE PHENOLIC XXXP.

FINISH: VARNISHED PER MIL-T-152A AND MIL-V-173B.

CUSTOMER DRAWING

CAD/CAM DWG. NO.

S1028_CD

SHEET 1 OF 1

★ STAR SYMBOL DENOTES CRITICAL DIMENSION,
SEE S/C ENGINEERING STANDARD ES-0001THIS DRAWING DESCRIBES A DESIGN CONSIDERED PROPRIETARY IN NATURE, DEVELOPED AND MANUFACTURED
BY SWITCHCRAFT INC. AND IS RELEASED ON A CONFIDENTIAL BASIS FOR IDENTIFICATION PURPOSE ONLY.

UNLESS OTHERWISE SPECIFIED

SIZE WIDTH MULT LBS./M TEMPER

1. ALL DIMENSIONS IN INCHES
TWO PLACE DECIMAL $\pm .01$
THREE PLACE DECIMAL $\pm .005$
FRACTIONAL DIMENSIONS $\pm 1/64$
ANGLES $\pm 1/2^\circ$
ALL DIA'S CONCENTRIC WITHIN .005 T.I.R.
2. REMOVE ALL BURRS
3. MAKE NO DIMENSIONAL ALLOWANCES FOR
APPLIED FINISHES, I.E., PLATING,
PAINTING, ETC.
4. HOLES ON THE SAME CENTERLINE MUST BE
ALIGNED WITHIN $\pm .002$

FINISH SEE NOTES MATERIAL SEE NOTES

SPEC. NO. SPEC. NO.

FIRST USED ON SCALE
1 = 0.5DATE DRAWN BY CHK'D APP'D
5-6-92 KJB RB 5-14-92 GJ 5-19-92

NAME PART NO. ISSUE

ROUND WASHER

S1028

B

REVISIONS

DO NOT SCALE DRAWING

Pro/Engineer CAD File



ROUTING



AMEYA360

Components Supply Platform

Authorized Distribution Brand :



Website :

Welcome to visit www.ameya360.com

Contact Us :

➤ Address :

401 Building No.5, JiuGe Business Center, Lane 2301, Yishan Rd
Minhang District, Shanghai , China

➤ Sales :

Direct +86 (21) 6401-6692

Email amall@ameya360.com

QQ 800077892

Skype ameyasales1 ameyasales2

➤ Customer Service :

Email service@ameya360.com

➤ Partnership :

Tel +86 (21) 64016692-8333

Email mkt@ameya360.com