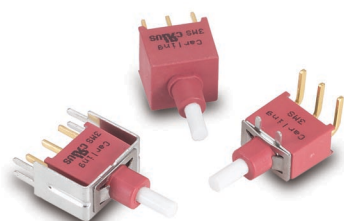
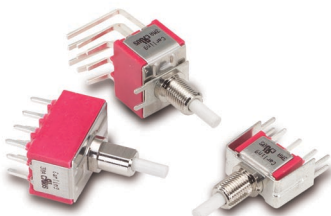




3MN-Series
Snap-Action Miniature
Pushbutton Switch



3MS-Series
Sealed Snap-Action
Miniature Pushbutton
Switch



3MA-Series
Alternate Action
Miniature Pushbutton
Switch

Specifications

Contact Rating	refer to ordering scheme
Electrical Life	50,000 make & break cycles @ full load
Contact Resistance.	3MN & 3MA-Series: 10 mΩ max. initial @ 2-4 VDC 100mA for both silver & gold plated contacts. 3MS-Series: 50 mΩ max. initial @ 2-4 VDC 100mA for both silver & gold plated contacts.
Insulation Resistance . . .	1000 MΩ min.
Dielectric Strength	1500 Volts RMS @ sea level
Operating Temperature . . .	-30°C to +85°C
Index of Protection	3MS -Series: IP68
Cap Installation Support . .	3MS-Series: 10 lbs. max.
Solder Heat Resistance. . .	MIL-STD-202, Method 210
Actuator Travel	25°

Materials

Case	3MN & 3MA-Series: Diallyl phthalate (DAP) (UL 94V-0) 3MS-Series: Glass filled nylon 6/6, flame retardant, heat stabilized (UL 94V-0)
Plunger.	3MN-Series: Thermoplastic polyester, black 3MS & 3MA-Series: Glass filled nylon or glass filled polyester (UL 94V-0)
Bushing	3MN-Series: Brass, nickel plated 3MA-Series: Zinc, nickel plated
Housing.	3MN & 3MA-Series: Stainless Steel
Switch Support Retainer . .	3MS-Series: Stainless Steel
Terminal Seal	Epoxy

3M-Series Optional Cap

To order a cap assembled on a switch, specify the switch number followed by the cap part number and the word "assembled".

Ex: 3MN-SP-7-P2-B6-M6QE-C13ASSEMBLED

To order caps in bulk, specify the Series, followed by the cap. Ex.) 3MN-C13



1 SERIES OR SWITCH CATALOG NUMBER 3MN, 3MS or 3MA

2 CAP SIZE

C1	round 7.6mm dia.	C5	round 14.5mm dia. (for 3MA w/ PL bushing)
C2	round 9.35 mm dia.	C6	brass chrome plated (for 3MA w/ PD bushing)
C3	square 11.7 x 11.7mm		
C4	round 5mm dia.		

3 CAP COLOR

1	white	5	yellow
2	black	6	green
3	red	7	blue
4	orange		

1 Black, white & red standard. Other colors available. Consult factory.

3MN-Series Ordering Scheme
with Square Actuator

with Plunger Actuator

1 SERIES
3MN Snap-Action Miniature Pushbutton Switch

2 POLES
SP single pole **DP** double pole
3 CIRCUIT

() - momentary

7 **ON** **(ON)**
4 ACTUATOR¹
SQUARE ACTUATOR (use with Color Options in Selection 5A & 5B.)

AP1 square with no frame
AP2 square raised above frame
AP3 square flush with frame

PLUNGER ACTUATOR (use with Bushing Options in Selection 5)

P0 2.5mm short plunger(for B6 bushing only)
P1 5.2mm plunger(for bushing B10,B11,B20,B21; 7.5mm for B6)
P2 2.0mm plunger(for bushing B10,B11,B20,B21; 4.2mm for B6)

5A ACTUATOR COLOR & 5B FRAME COLOR^{1,2}

1 white	4 orange	7 blue
2 black	5 yellow	8 brown
3 red	6 green	9 gray

1 Black, white and red are standard. Other colors available, consult factory for details.
 2 Selection 5B is blank if actuator style is AP1 (no frame)

OR

5 BUSHING
B6 Unthreaded (for terminations VS6-VS9 only)
B10 Threaded keyway
B11 Threaded with flat
B20 Unthreaded keyway
B21 Unthreaded with flat

NOTE:

 If ordering optional CAP with bushings B10, B11, B20 or B21, specify actuator P1.
 For CAP with bushing B6, specify actuator P2.
 For CAP options, see ordering scheme on page 35.

6 TERMINATION

M1	Solder Lug
M2	PCB
M5-1	Wire Wrap .750 [19.05]
M5-3	Wire Wrap .425 [10.80]
M6	PC Mount, 90° horizontal
M7	PC Mount, 90° vertical
VS2	PC Mount, U bracket, .620 mounting x .460 high
VS3	PC Mount, U bracket, .620 mounting x .630 high
VS4	PC Mount, U bracket, .750 mounting x .460 high
VS5	PC Mount, U bracket, .750 mounting x .630 high
VS6	PC Mount, U bracket, .460 high (for B6 bushing only)
VS7	PC Mount, U bracket, .630 high (for B6 bushing only)
VS8	PC Mount, U bracket, .460 high (for B6 bushing only)
VS9	PC Mount, U bracket, .630 high (for B6 bushing only)

7 CONTACT

Material	Terminal Plating	Rating	Approvals
G silver ¹	gold over silver ³	1A@120VAC or 28VDC	UL, CUL
Q silver ¹	silver ¹	1A@120VAC or 28VDC	UL, CUL
R gold ²	gold ²	0.4VA max. @20V max (AC/DC)	

NOTE:

Tin-lead option available with PC type terminations only.

1 Moveable contact & terminals: copper alloy, silver plate
 2 Moveable contact & terminals: copper alloy with gold plate over nickel plate
 3 Terminals: silver plate with outer layer in gold plating

8 EPOXY SEAL
E epoxy seal

3MS-Series Ordering Scheme

3MS - **WSP** **7** - **P1** - **B1** - **M6** **Q** **E**

1 Series 2 Poles 3 Circuit 4 Actuator 5 Bushing 6 Termination 7 Contact 8 Seal

1 SERIES

3MS Sealed Snap-Action Miniature Pushbutton Switch

2 POLES

WSP single pole

WDP double pole

3 CIRCUIT

() - momentary

7 ON (ON)

4 ACTUATOR

P1 .173" plunger (for B1 bushing); .276" (for B4 bushing)

P2 .220" plunger (for B1 bushing); .327" (for B4 bushing)

P3 .087" plunger (for B1 bushing); .193" (for B4 bushing)

5 BUSHING

B1 Threaded

B4 Unthreaded

6 TERMINATION

M1 Solder Lug

M2 PCB

M6 PC Mount, 90° horizontal

M61 Snap-In, 90° horizontal

M7 PC Mount, 90° vertical

M71 Snap-In, 90° vertical

VS2 PC Mount, U bracket, .620 mounting x .460 high

VS21 Snap-In, U bracket, .620 mounting x .460 high

VS3 PC Mount, U bracket, .620 mounting x .630 high

VS4 PC Mount, U bracket, .750 mounting x .460 high

VS5 PC Mount, U bracket, .750 mounting x .630 high

7 CONTACT

	Material	Terminal Plating	Rating	Approvals
G	silver ¹	gold over silver ³	1A@120VAC or 28VDC	UL, CUL IP68
Q	silver ¹	silver ¹	1A@120VAC or 28VDC	UL, CUL IP68
R	gold ²	gold ²	0.4VA max. @20V max (AC/DC)	IP68

NOTE:

Tin-lead option available with PC type terminations only.

1 Moveable contact & terminals: copper alloy, silver plate

2 Moveable contact & terminals: copper alloy with gold plate over nickel plate

3 Terminals: silver plate with outer layer in gold plating

7 EPOXY SEAL

E epoxy seal

3MA-Series Ordering Scheme

with Square Actuator **3MA** - **SP** - **1** - **AP2** / **3** **2** - **M6** **Q** **E**

1 Series 2 Poles 3 Circuit 4 Actuator 5A Actuator Color 5B Frame Color 6 Termination 7 Contact 8 Seal

with Plunger Actuator **3MA** - **SP** - **1** - **PD** - **BD** - **M6** **Q** **E**

1 Series 2 Poles 3 Circuit 4 Actuator 5 Bushing 6 Termination 7 Contact 8 Seal

1 SERIES

3MA Alternate-Action Miniature Pushbutton Switch

2 POLES

SP single poleDP double pole3P three pole4P four pole

3 CIRCUIT

() - momentary

Switching Position:

2-3, 5-6, 8-9, 11-12

OPEN

2-1, 5-4, 8-7, 11-10

NONE

ON

ON (ON)

4 ACTUATOR

SQUARE ACTUATOR (use with Color Options in Selection 5A & 5B.)

AP1square with no frame

AP2square raised above frame

PLUNGER ACTUATOR (use with Bushing Options in Selection 5)

PA.118 dia. x .299" plunger length

PI.118 dia. x .244" plunger length

PL.118 dia. x .327" plunger length

PC.315" dia. brass chrome plated plunger (for BD bushing only)

PD.242" dia. brass chrome plated plunger (for BD bushing only)

5A ACTUATOR COLOR & 5B FRAME COLOR^{1,2}

1 white

4 orange

7 blue

2 black

5 yellow

8 brown

3 red

6 green

9 gray

1 Black, red and white are standard. Other colors available, consult factory for details.

2 Selection 5B is blank if actuator style AP1 (no frame)

OR

5 BUSHING

BDBig bushing for PC, PD actuator 15/32"

B10Threaded 1/4 - 40

B20Unthreaded

B21Unthreaded with flat

NOTE: For CAP options, see ordering scheme on page 35.

6 TERMINATION

M1Solder Lug

VS2PC Mount, U bracket, .620 mounting x .460 high

M2PCB

VS3PC Mount, U bracket, .620 mounting x .630 high

M5-1Wire Wrap .750 [19.05]

VS4PC Mount, U bracket, .750 mounting x .460 high

M5-2Wire Wrap .964 [24.48]

VS5PC Mount, U bracket, .750 mounting x .630 high

M5-3Wire Wrap .425 [10.80]

M5-4Wire Wrap 1.062 [26.87]

M6PC Mount, 90° horizontal

M7PC Mount, 90° vertical

7 CONTACT

Material

Terminal Plating

Rating

Approvals

Gsilver¹

gold over silver³

6A@125VAC or 28VDC, 3A@250VAC

UL, CUL

Kgold²

tin-lead⁴

6A@125VAC or 28VDC

Psilver¹

tin-lead⁴

6A@125VAC or 28VDC, 3A@250VAC

UL, CUL

Qsilver¹

silver¹

6A@125VAC or 28VDC, 3A@250VAC

UL, CUL

Rgold²

gold²

0.4VA max. @20V max (AC/DC)

NOTE:

Tin-lead option available with PC type terminations only.

1Moveable contact & terminals: copper alloy, silver plate

2Moveable contact & terminals: copper alloy with gold plate over nickel plate

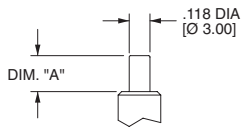
3Terminals: silver plate with outer layer in gold plating

4Outer terminals: copper alloy with tin-lead over nickel plate

8 EPOXY SEAL

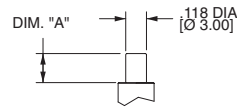
Eepoxy seal

NOTE: For CAP options, see ordering scheme on page 35.

3MN-Series Dimensional Specifications: in. [mm]
PLUNGER


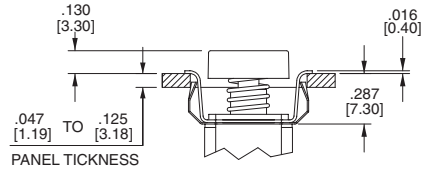
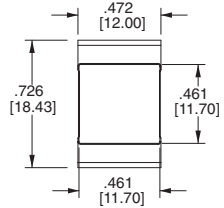
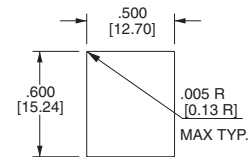
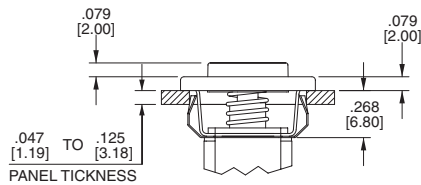
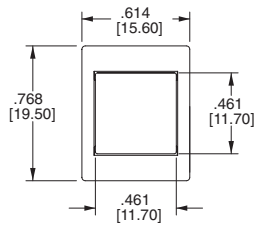
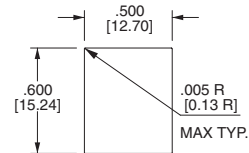
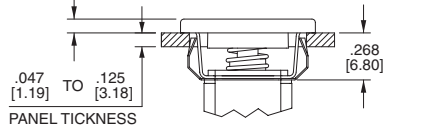
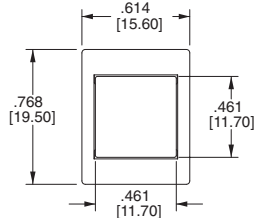
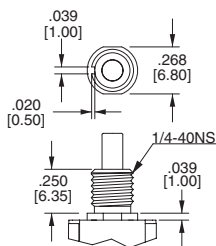
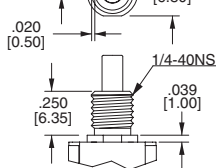
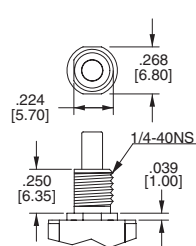
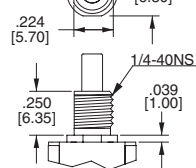
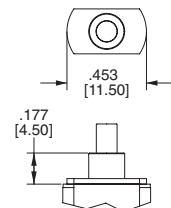
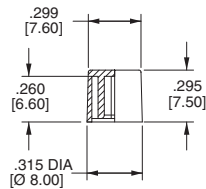
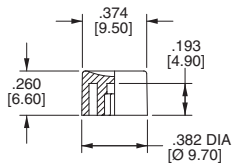
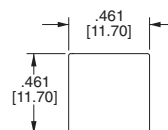
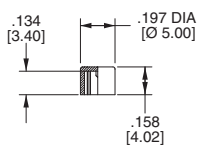
OPTION CODE	DIM. "A"
P0	.000 [0.00]
P1	.205 [5.20]
P2	.079 [2.00]

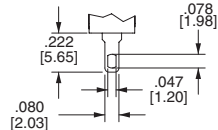
FOR B10,B11,B20,B21 ONLY



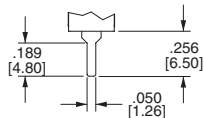
FOR B6 ONLY

OPTION CODE	DIM. "A"
P0	.098 [2.50]
P1	.295 [7.50]
P2	.165 [4.20]

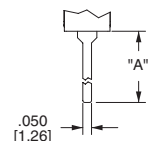
ACTUATOR
AP1

PANEL MOUNTING

AP2

PANEL MOUNTING

AP3

BUSHING
**B10
STANDARD KEYWAY
THREADED SHOWN**

**B20
STANDARD KEYWAY
NON-THREADED**

**B11
THREADED SHOWN
WITH FLAT**

**B21
NON-THREADED
WITH FLAT**

**B6
NON-THREADED
(FOR TERMINATION
OPTIONS VS6-VS9 ONLY)**

CAP
C1

C2

C3

C4


3MN-Series Dimensional Specifications: in. [mm]
TERMINATION
M1


THK .030 [0.75]

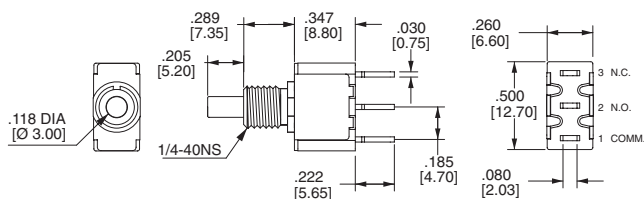
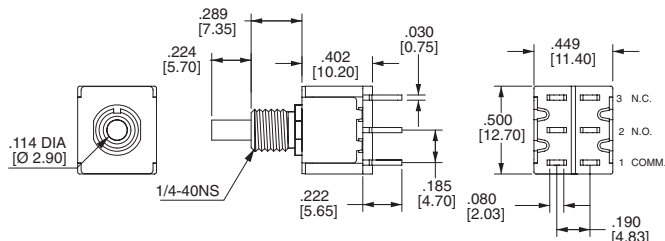
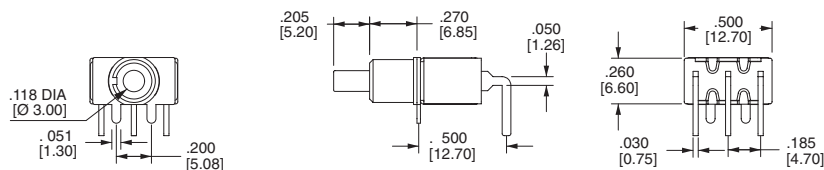
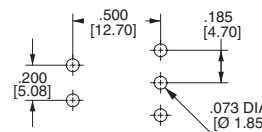
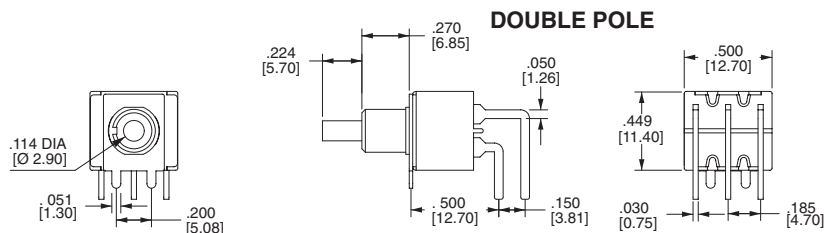
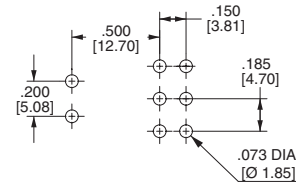
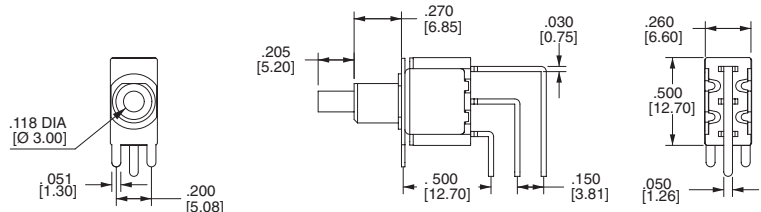
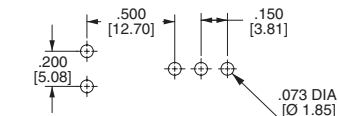
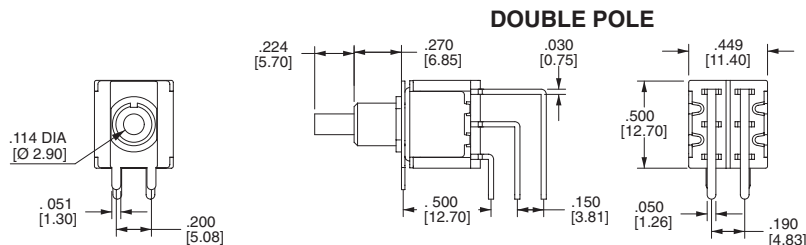
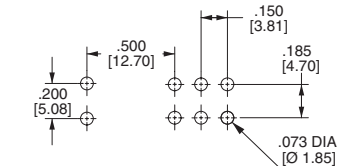
M2


THK .030 [0.75]

M5


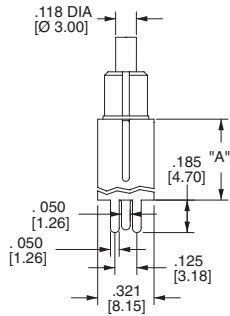
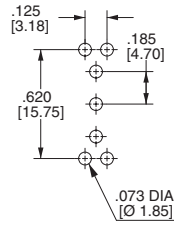
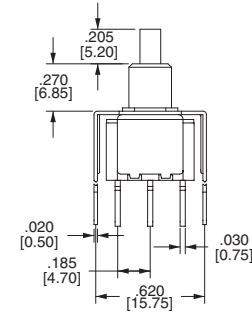
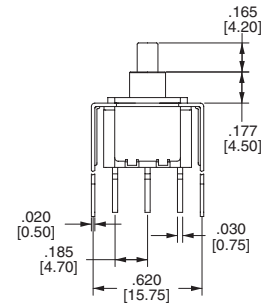
THK .030 [0.75]

OPTION CODE	DIM. "A"
M5-1	.750 [19.05]
M5-3	.425 [10.80]

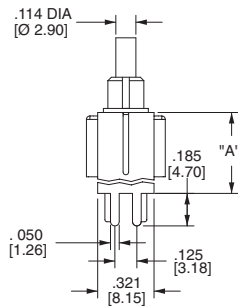
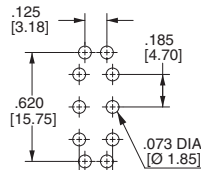
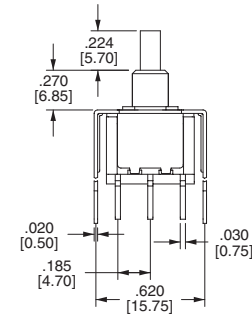
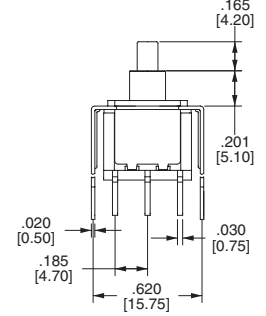
SINGLE POLE

DOUBLE POLE

M6
SINGLE POLE

PC MOUNTING

DOUBLE POLE

PC MOUNTING

M7
SINGLE POLE

PC MOUNTING

DOUBLE POLE

PC MOUNTING


3MN-Series Dimensional Specifications: in. [mm]
TERMINATION
SINGLE POLE

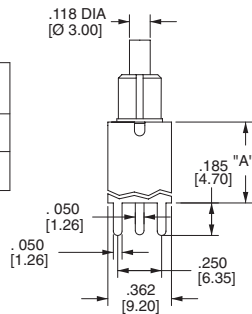
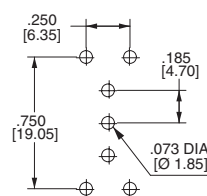
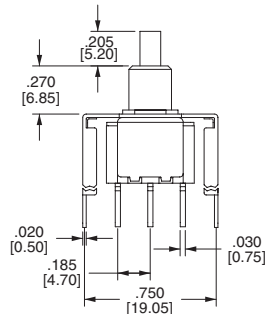
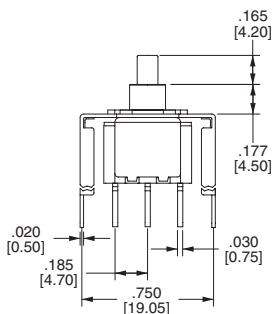
OPTION CODE	DIM. "A"
VS2	.460 [11.68]
VS6	.630 [16.00]
VS3	.630 [16.00]
VS7	.630 [16.00]


PC MOUNTING

VS2-VS3

**VS6-VS7
(For B6 Bushing Only)**

DOUBLE POLE

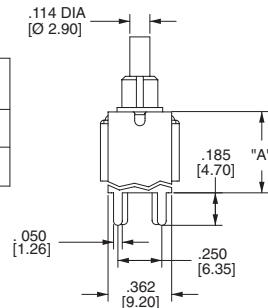
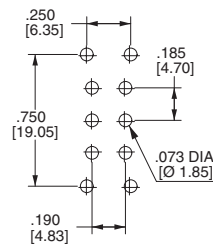
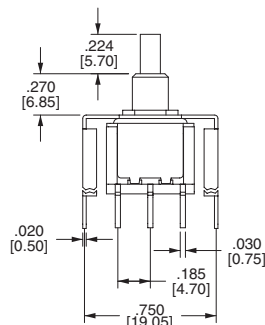
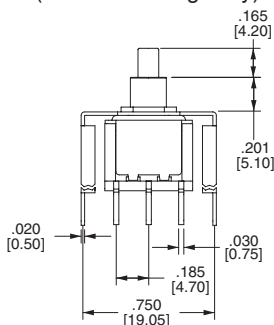
OPTION CODE	DIM. "A"
VS2	.460 [11.68]
VS6	.630 [16.00]
VS3	.630 [16.00]
VS7	.630 [16.00]

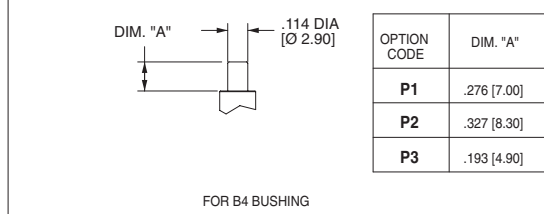
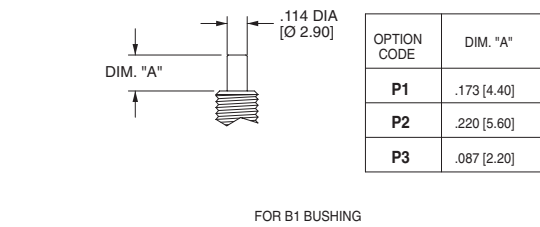
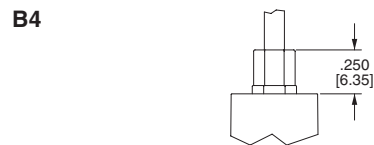
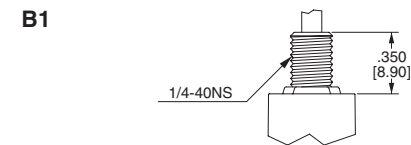
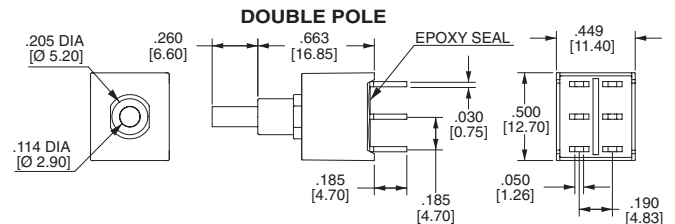
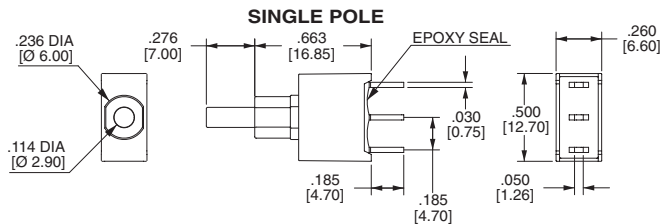
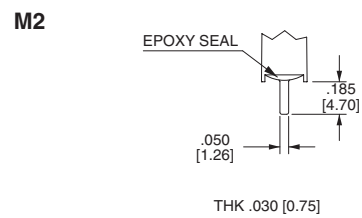
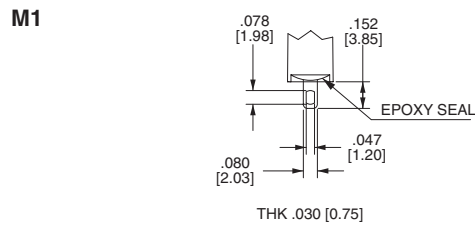
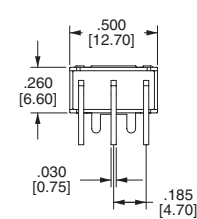
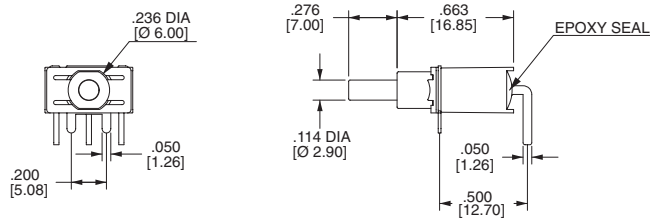
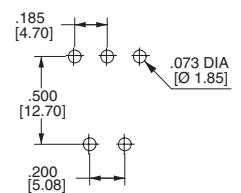
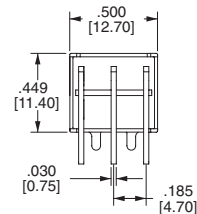
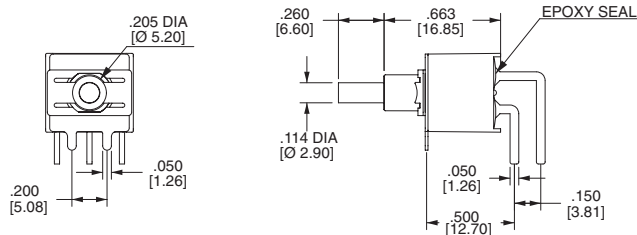
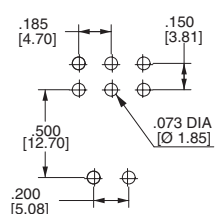

PC MOUNTING

VS2-VS3

**VS6-VS7
(For B6 Bushing Only)**

SINGLE POLE

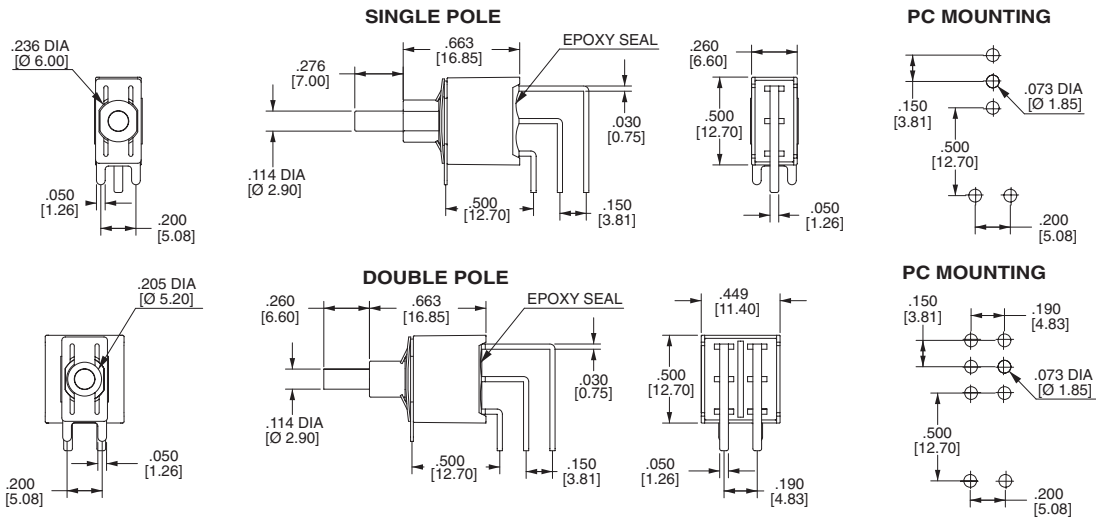
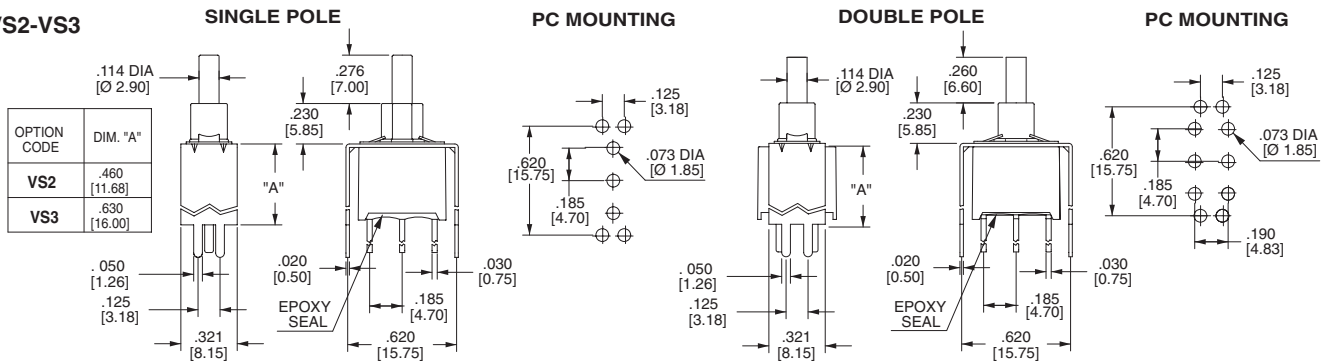
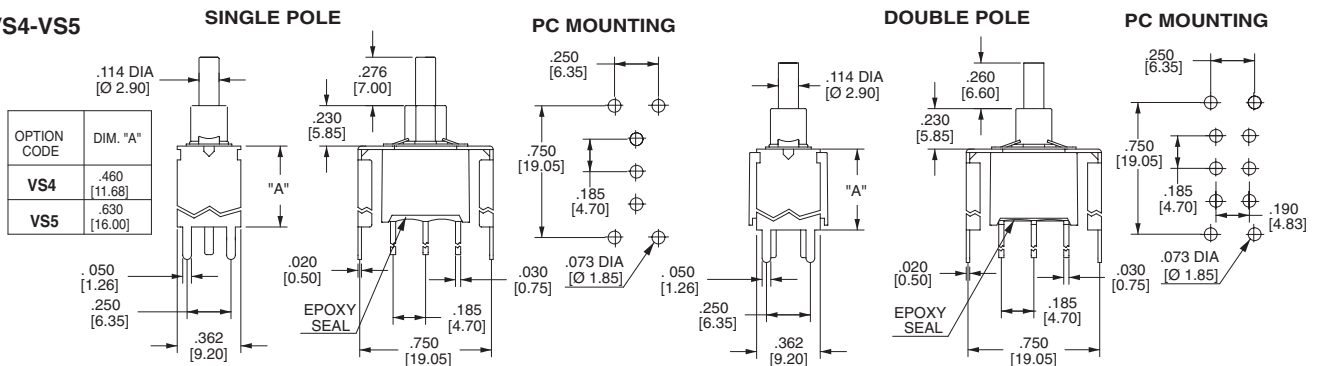
OPTION CODE	DIM. "A"
VS4	.460 [11.68]
VS8	.630 [16.00]
VS5	.630 [16.00]
VS9	.630 [16.00]

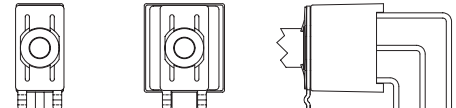
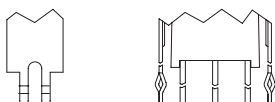
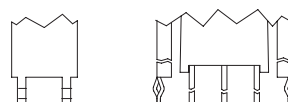

PC MOUNTING

VS4-VS5

**VS8-VS9
(For B6 Bushing Only)**

DOUBLE POLE

OPTION CODE	DIM. "A"
VS4	.460 [11.68]
VS8	.630 [16.00]
VS5	.630 [16.00]
VS9	.630 [16.00]

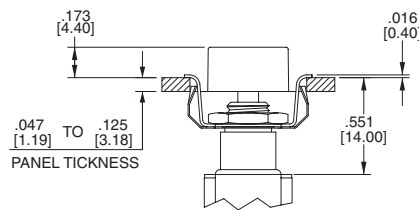
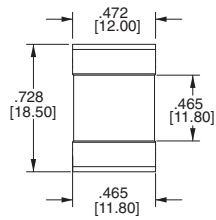
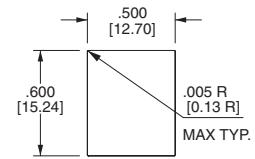
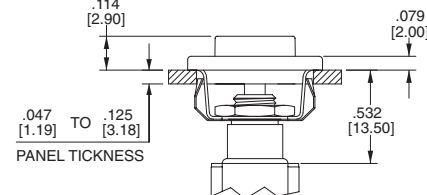
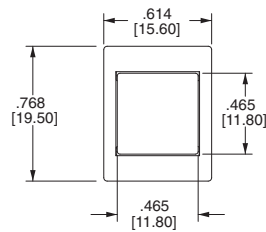
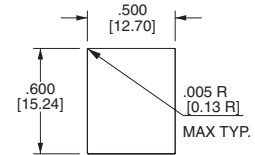
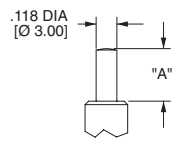

PC MOUNTING

VS4-VS5

**VS8-VS9
(For B6 Bushing Only)**


3MS-Series Dimensional Specifications: in. [mm]
PLUNGER

BUSHING

TERMINATION

M6
SINGLE POLE

PC MOUNTING

DOUBLE POLE

PC MOUNTING


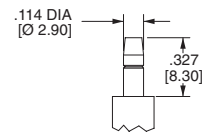
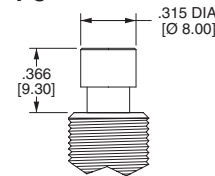
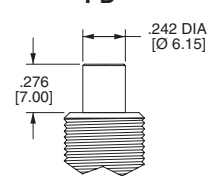
3MS-Series Dimensional Specifications: in. [mm]
TERMINATION
M7

VS2-VS3

VS4-VS5

SNAP-IN TERMINATION OPTIONS
M61

M71

VS21,VS31

VS41,VS51


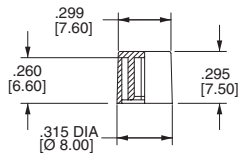
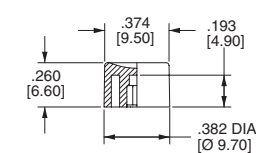
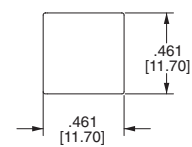
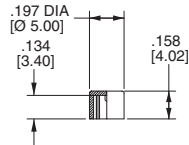
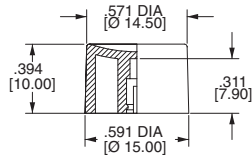
M61,M71,VS21,VS31,VS41,VS51 have the same P.C. mounting but with snap-in bracket.

3MA-Series Dimensional Specifications: in. [mm]
ACTUATOR
AP1

PANEL MOUNTING

AP2

PANEL MOUNTING

PLUNGER
PA,PI


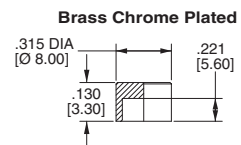
OPTION CODE	DIM. "A"
PA	.299 [7.60]
PI	.244 [6.20]

PL

PC

Brass Chrome Plated
PD


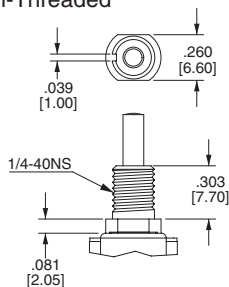
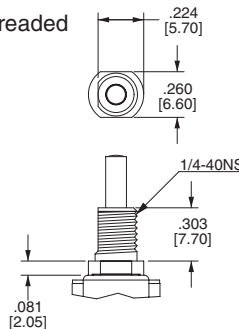
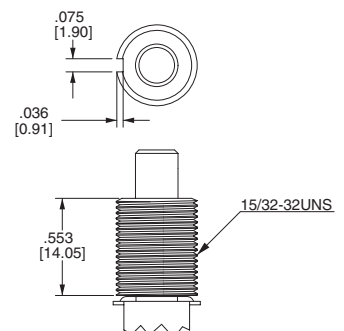
PC, PD Plunger must fit with BD bushing

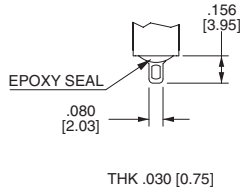
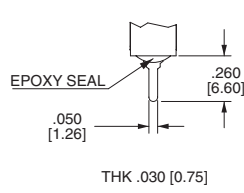
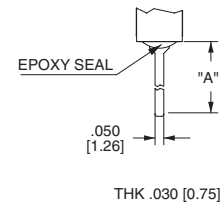
CAP
C1

C2

C3

C4

C5


For PL Bushing Only

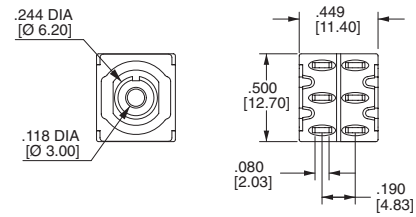
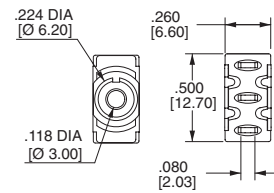
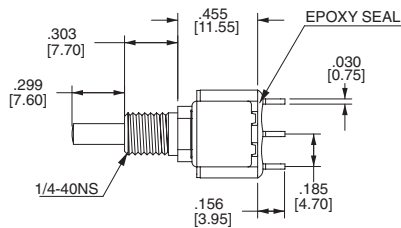
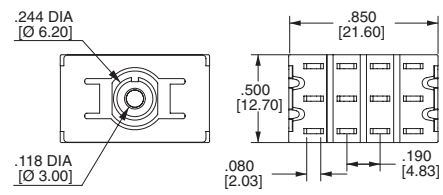
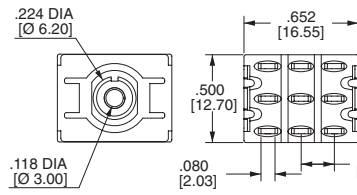
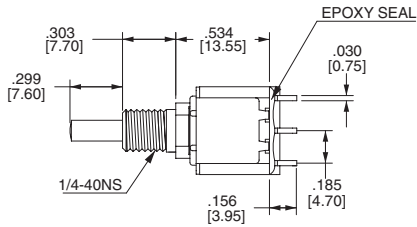
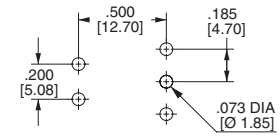
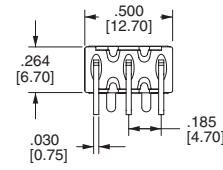
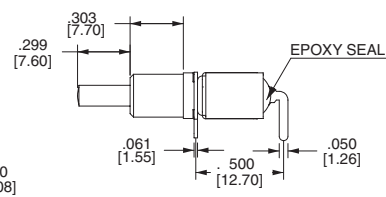
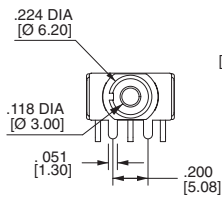
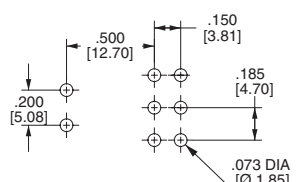
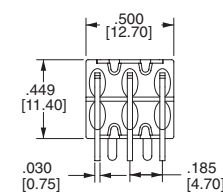
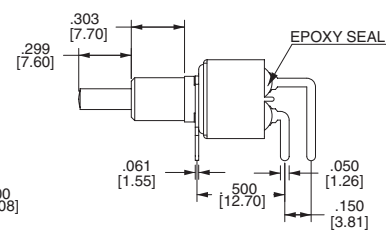
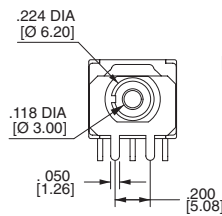
C6


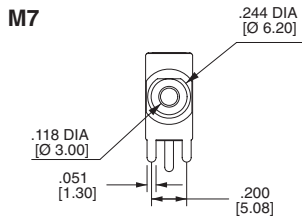
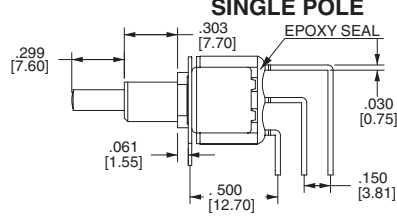
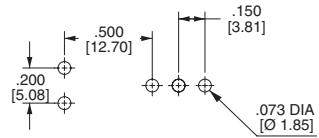
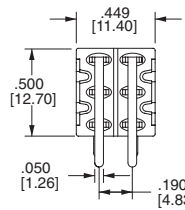
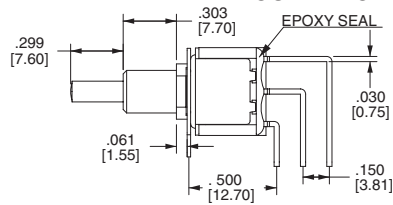
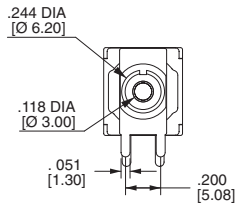
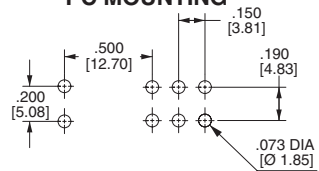
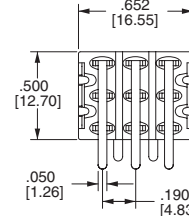
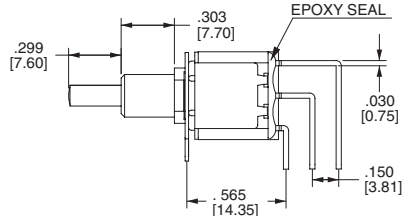
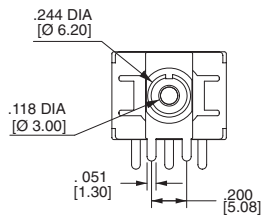
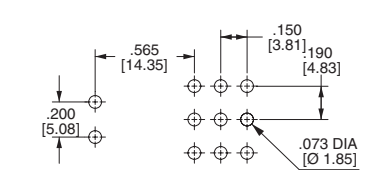
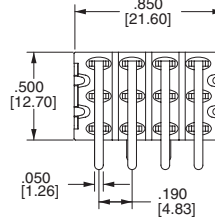
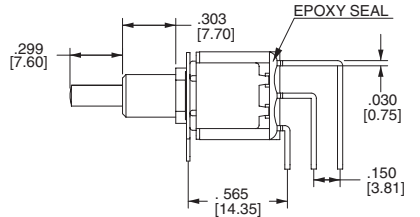
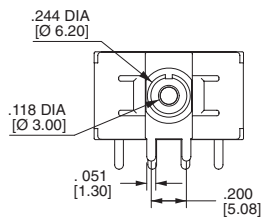
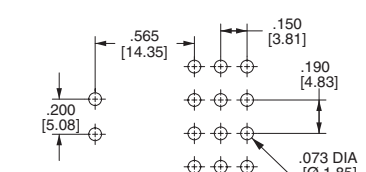
For PD Bushing Only

BUSHING
**B10 Threaded
B20 Non-Threaded**

B21 Non-Threaded

BD


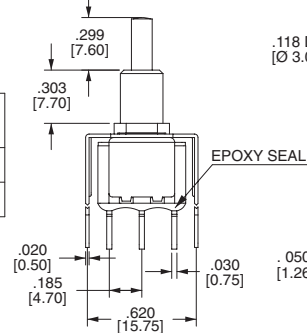
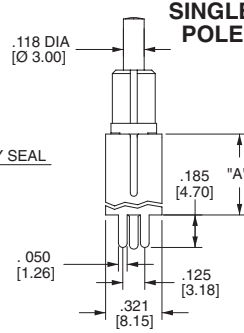
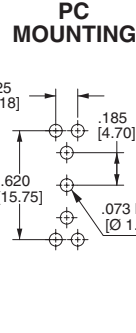
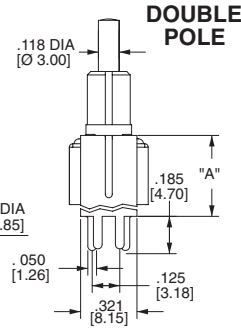
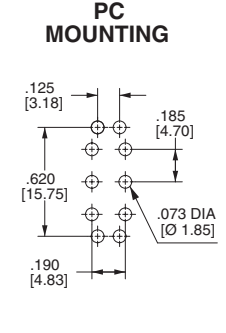
3MA-Series Dimensional Specifications: in. [mm]
TERMINATION
M1

M2

M5


OPTION CODE	DIM. "A"
M5-1	.750 [19.05]
M5-2	.964 [24.48]
M5-3	.425 [10.80]
M5-4	1.062 [26.97]

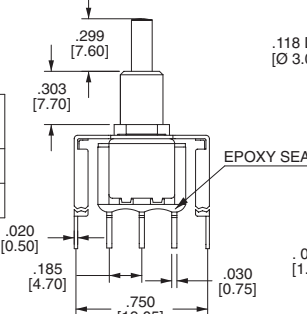
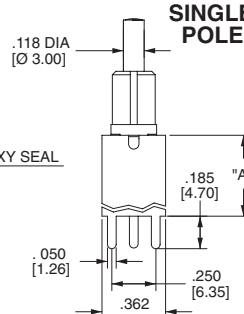
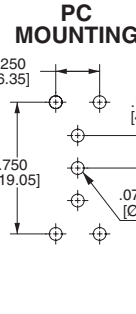
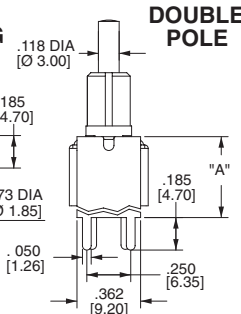
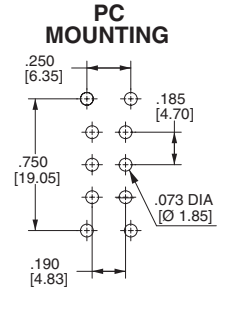
SINGLE POLE
DOUBLE POLE

3 POLE
4 POLE

M6
SINGLE POLE
PC MOUNTING

DOUBLE POLE
PC MOUNTING


3MA-Series Dimensional Specifications: in. [mm]
TERMINATION
M7

SINGLE POLE

PC MOUNTING

DOUBLE POLE

PC MOUNTING

THREE POLE

PC MOUNTING

FOUR POLE

PC MOUNTING

VS2-VS3

OPTION CODE	DIM. "A"
VS2	.460 [11.68]
VS3	.630 [16.00]


SINGLE POLE

PC MOUNTING

DOUBLE POLE

PC MOUNTING

VS4-VS5

OPTION CODE	DIM. "A"
VS4	.460 [11.68]
VS5	.630 [16.00]


SINGLE POLE

PC MOUNTING

DOUBLE POLE

PC MOUNTING


AMEYA360

Components Supply Platform

Authorized Distribution Brand :



Website :

Welcome to visit www.ameya360.com

Contact Us :

➤ Address :

401 Building No.5, JiuGe Business Center, Lane 2301, Yishan Rd
Minhang District, Shanghai , China

➤ Sales :

Direct +86 (21) 6401-6692

Email amall@ameya360.com

QQ 800077892

Skype ameyasales1 ameyasales2

➤ Customer Service :

Email service@ameya360.com

➤ Partnership :

Tel +86 (21) 64016692-8333

Email mkt@ameya360.com