

EN SERIES

LIQUID LEVEL CONTROL

UL listed CSA recognized

CE



- **Pump Up or Down Control**
- **DIN-Rail Enclosure**
- **5 kΩ to 100 kΩ**
- **SPDT 8 Amp Relay Output**

GENERAL FEATURES:

The EN series is designed to monitor conductive liquids such as tap water, waste water, sea water, coffee, etc. The principle is based on the measurement of the resistance of the liquid between two submerged probes. When this value is lower than the preset threshold selected on the dial of the unit, the output relay changes state. Applications are found in the environmental and chemical industries, food equipment machinery and food processing technology.

SPECIFICATIONS:

Input Power	24, 110, 230 VAC $\pm 15\%$ 50/60 Hz
Max. Power Consumption	3 VA
Probe Sensitivity	5 kΩ to 100 kΩ
Probe Voltage	24 VAC Max.
Probe Current	5 mA
Max. Probe Cable Capacitance	10 nF
Probe/Output Relay Insulation	2,500 k VAC
Output Relay	SPDT Relay
Max. Output Rating	8 Amp
Relay Electrical Life	2 x
Operating Temperature	+14°F to 140°F (-20°C to 60°C)
Weight	5 oz. (140g)

CONFORMITY:

Immunity to interference and noise (EMC)

- IEC 1000.4.5 Surge immunity: Level 3
- IEC 1000.4.2 Electrostatic discharges: Level 3
- IEC 255.5 Damped oscillated waves: Level 3
- IEC 1000.4.3 Radiated disturbance Level 3
- IEC 1000.4.4 Fast transient Level 3
- IEC 1000.4.6 Conducted RF: Level 3 (ENV 50141)

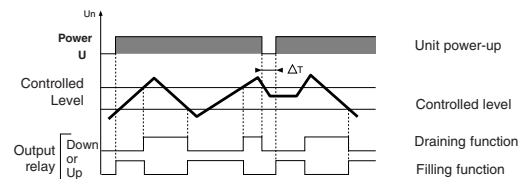
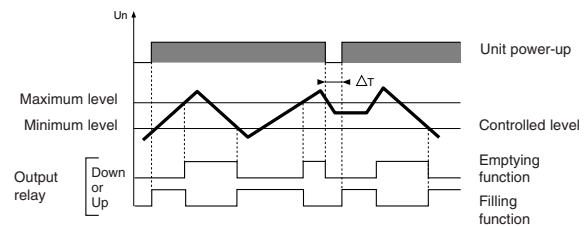
RF Emissions (EMC)

CENELAC EN 55022; Class A

ORDERING INFORMATION:

Voltage	Part Number	Type
24 VAC	84 870 001	EN, Pump Up/Pump Down Selectable
24 VAC	84 870 101	END, Pump Down Only
120 VAC	84 870 003	EN, Pump Up/Pump Down Selectable
120 VAC	84 870 103	END, Pump Down Only
230 VAC	84 870 004	EN, Pump Up/Pump Down Selectable
230 VAC	84 870 104	END, Pump Down Only

FILLING OR EMPTYING CONTROL (EN):



Regulation of two levels: Minimum / Maximum

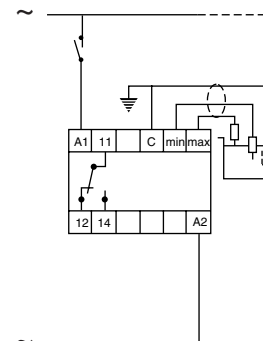
The output relay changes state when the level of liquid reaches the maximum electrode, with the minimum electrode submerged. It returns to its initial state when the minimum probe is no longer in contact with the liquid.

Regulation of one level:

Connect the maximum and common terminals together. The relay will change state when the minimum probe enters or leaves the liquid.

Note: If the power break ΔT lasts for 0.5 seconds or more, the relay reenergizes instantly if in «UP» mode and is deenergized if in «DOWN» mode.

WIRING:



Products and specifications subject to change without notice.
Consult factory for application assistance.

AMEYA360

Components Supply Platform

Authorized Distribution Brand :



Website :

Welcome to visit www.ameya360.com

Contact Us :

➤ Address :

401 Building No.5, JiuGe Business Center, Lane 2301, Yishan Rd
Minhang District, Shanghai , China

➤ Sales :

Direct +86 (21) 6401-6692

Email amall@ameya360.com

QQ 800077892

Skype ameyasales1 ameyasales2

➤ Customer Service :

Email service@ameya360.com

➤ Partnership :

Tel +86 (21) 64016692-8333

Email mkt@ameya360.com