

Common mode Noise Filter Array

Type: **EXC28CE**



■ Features

- 2 Common mode noise filters in one package
- Small size and low-profile
(L 2.0 mm×W 1.0 mm×H 0.5 mm)
- Reduce the common mode noise and reform the signal wave by high-coupled inductors
- Magnetic shield type
- Rigidly layered and sintered structure with high resistance to reflow heat and mounting reliability
- Lead, halogen, and antimony free
- RoHS compliant

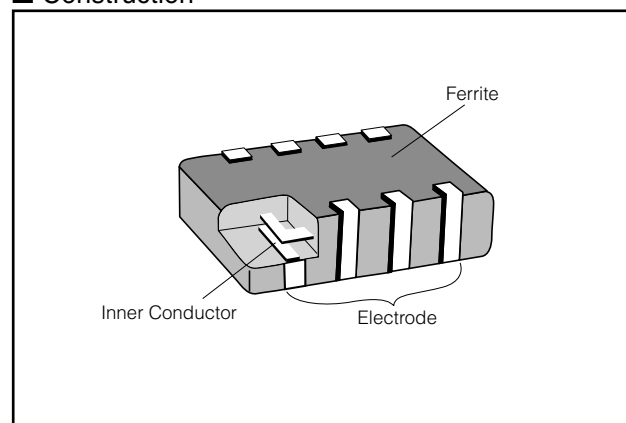
■ Recommended Applications

- IEEE1394 data lines such as PCs, DVC, TV.
- LVDS data lines such as PCs, TV.

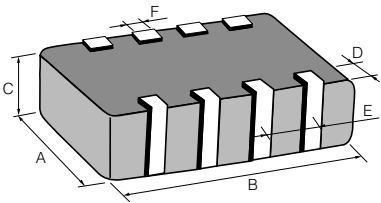
■ Explanation of Part Numbers

1	2	3	4	5	6	7	8	9	10	11	12
E	X	C	2	8	C	E	9	0	0	U	
Product Code			Size	Number of Terminals	Type	Characteristics	Nominal Impedance			Form	Suffix
Noise Filter	Code	Dimensions(mm)	8 Terminals	C	Coupled type	E	The first two digits are significant figure of impedance value, and the third one denotes the number of zeros following			Code	Packing
	2	2.0 × 1.0 × 0.5 (L) × (W) × (H)				High speed Differential transmission (for Mbps)				U	Embossed Carrier Taping 4 mm pitch, 5,000 pcs.

■ Construction

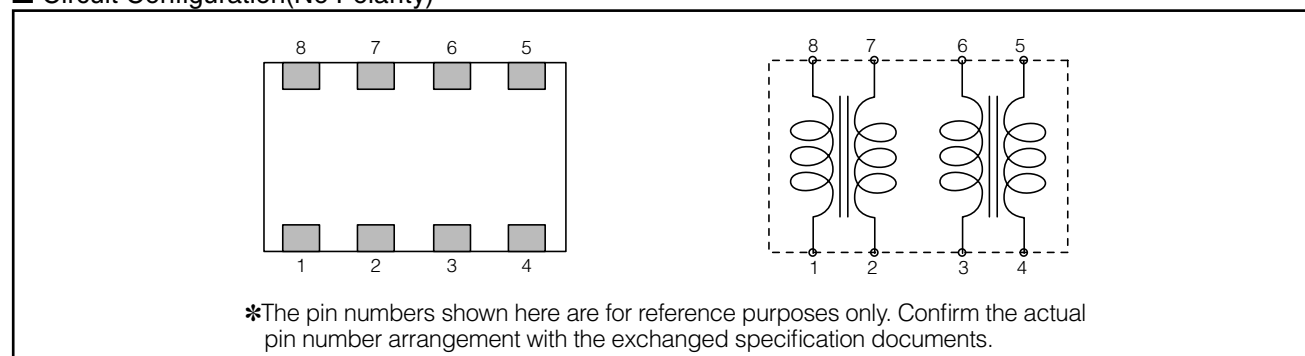


■ Dimensions in mm (not to scale)



Type (inch size)	Dimensions (mm)						Mass (Weight) [mg/pc.]
	A	B	C	D	E	F	
EXC28CE (0804)	1.00±0.15	2.0±0.2	0.5±0.1	0.20±0.15	0.5±0.1	0.25±0.10	5

■ Circuit Configuration(No Polarity)



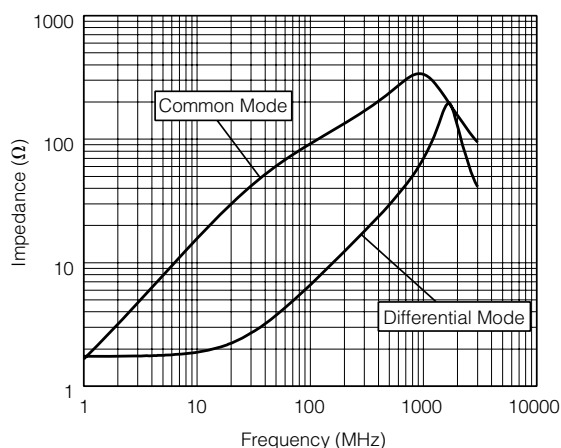
■ Ratings

Part Number	Impedance (Ω) at 100 MHz		Rated Voltage (V DC)	Rated Current (mA DC)	DC Resistance (Ω) max.
	Common Mode	Differential Mode			
EXC28CE900U	90 $\Omega \pm 25\%$	15 Ω max.	5	160	1.5
EXC28CE121U	120 $\Omega \pm 25\%$	18 Ω max.	5	140	2.0
EXC28CE201U	200 $\Omega \pm 25\%$	20 Ω max.	5	130	2.5
EXC28CE301U	300 $\Omega \pm 25\%$	30 Ω max.	5	80	5.0

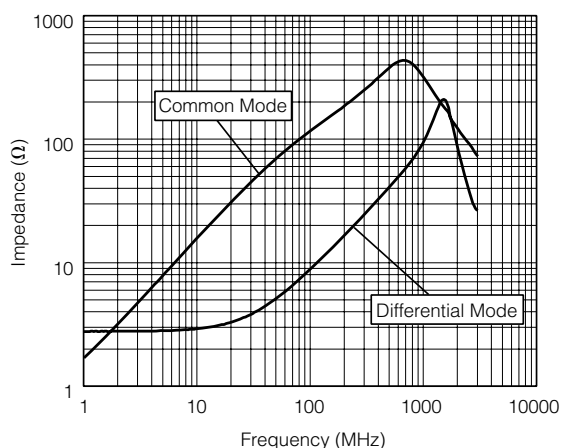
- Category Temperature Range $-40\text{ }^{\circ}\text{C}$ to $+85\text{ }^{\circ}\text{C}$

■ Impedance Characteristics (Typical)

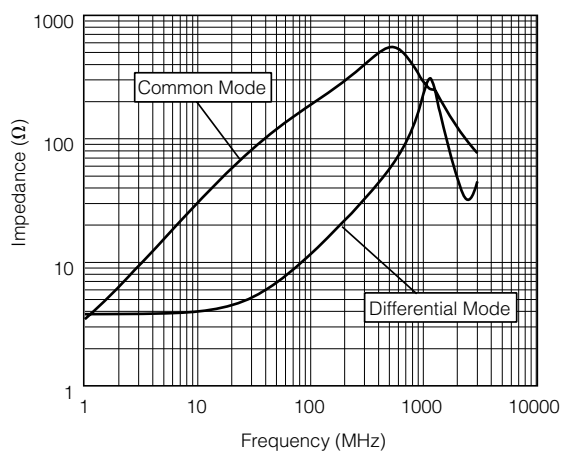
● EXC28CE900U



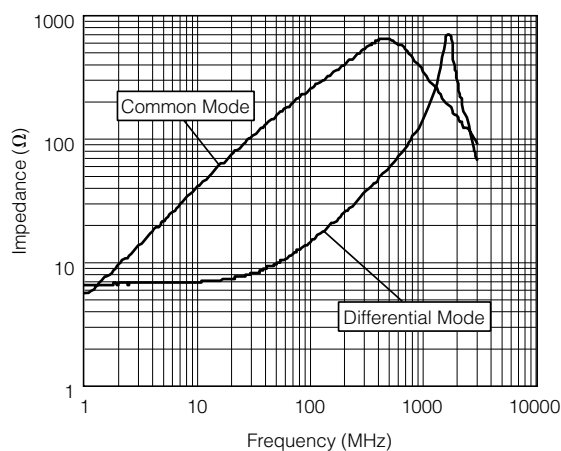
● EXC28CE121U



● EXC28CE201U

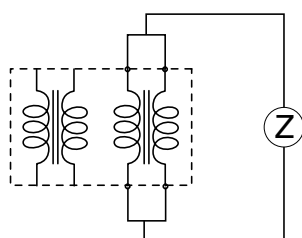


● EXC28CE301U

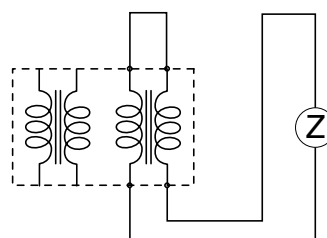


● Measurement Circuit

(A) Common Mode



(B) Differential Mode



■ Packaging Methods, Land Pattern, Soldering Conditions and Safety Precautions

Please see Related Information

AMEYA360

Components Supply Platform

Authorized Distribution Brand :



Website :

Welcome to visit www.ameya360.com

Contact Us :

➤ Address :

401 Building No.5, JiuGe Business Center, Lane 2301, Yishan Rd
Minhang District, Shanghai , China

➤ Sales :

Direct +86 (21) 6401-6692

Email amall@ameya360.com

QQ 800077892

Skype ameyasales1 ameyasales2

➤ Customer Service :

Email service@ameya360.com

➤ Partnership :

Tel +86 (21) 64016692-8333

Email mkt@ameya360.com