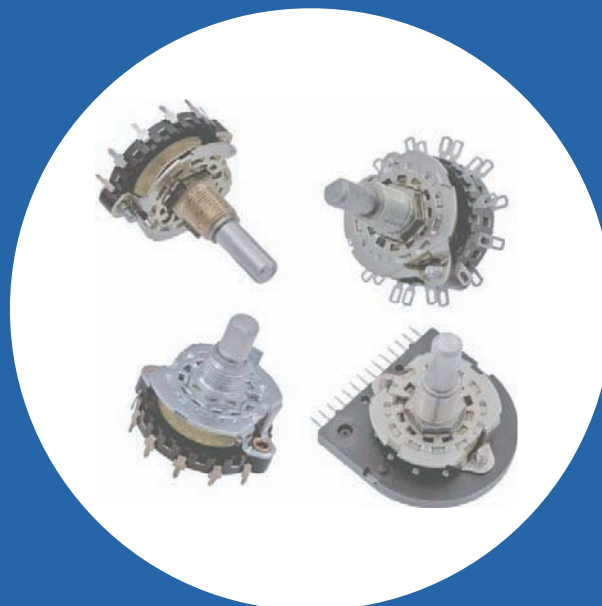


# Industrial Rotary Switch

## Features

- Hill and valley detent
- Balanced double bump detent spring
- 30° or 60° indexing
- Spring return styles available
- Adjustable stop available
- Solder lug and printed circuit terminals available
- Molded stator prevents solder from flowing into the circuit
- Custom switching patterns available
- Index or wafers are available separately
- RoHS compliant



## Electrical and Mechanical Specifications

### Indexing

Double bump spring hill and valley detent with standard 30° indexing for 2 through 12 positions or with special 60° indexing from 2 to 6 positions.

Special 90° indexing consult CTS

### Voltage and Current Rating

UL Rating: 3/4 amp at 125 VAC (shorting type only)

Special Rating: 1/4 amp at 28 VDC (shorting or non shorting)  
1 amp at 28 VDC (shorting type only)

### Contact Resistance

.015 ohm max. when measured from adjacent terminals

### Stop Strength

15 in-lb (17.3 Kgf-cm)

### Torque

Up to 48 in-oz. (3.4 Kgf-cm)

### Detent Rotational Life

25,000 cycles

### Materials

Shaft: Aluminum or unplated brass at CTS option

Bushing: Brass

Detent Spring: Spring brass or nickel silver depending on torque requirements

Front Plate: Zinc plated or nickel plated steel

Rotor Contacts, Stator Contacts and Terminals:

Silver plated brass standard

Stator Insulator: Glass reinforced thermoset material

### Bushing Lengths

Standard: 3/8"-32 UNEF-2A Thread, 1/4" (6.35mm) or 3/8" (9.53mm) long.

Special Lengths: Available as required

### Locating Lugs

Standard: Left side .531" (13.5mm) radius

Special: Right side .531" (13.5mm) radius or no lug

### Shaft Trim

Standard: Plain round, Flat, Slot, Knurl, or mixed (Flat with Slot)

Special: Available as request

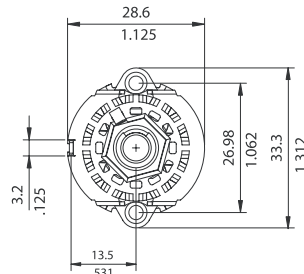
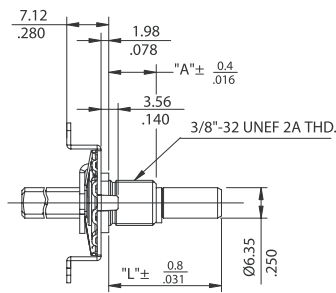
### Frames

Machine screw, bolt & nut, or rivet construction

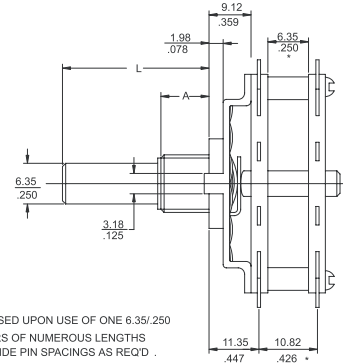
### Panel Seal

Available with bushing and shaft seal

## Physical Dimensions



\* NOTE :  
10.82/.426 DIMENSION BASED UPON USE OF ONE 6.35/.250  
NO SPACERS OR SPACERS OF NUMEROUS LENGTHS  
ARE AVAILABLE TO PROVIDE PIN SPACINGS AS REQ'D .

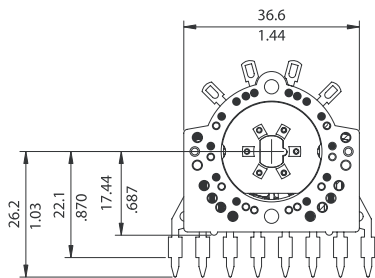


DIMENSION:  $\frac{\text{mm}}{\text{inch}}$

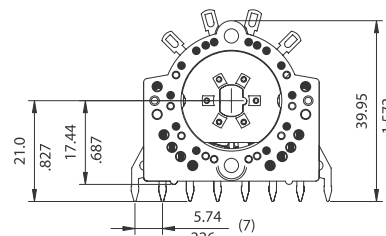
Detent Only

Typical Assembled Switch

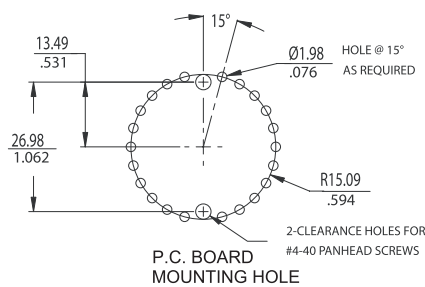
## Available Terminal Styles



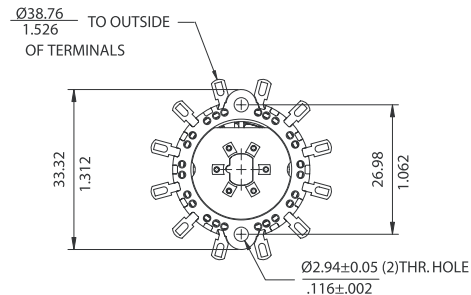
Y-Style



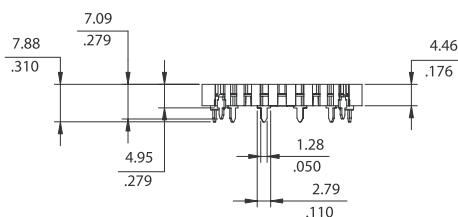
X-Style



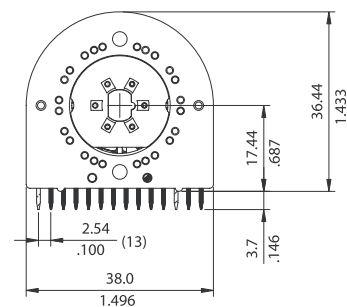
P.C. BOARD  
MOUNTING HOLE



T-Style



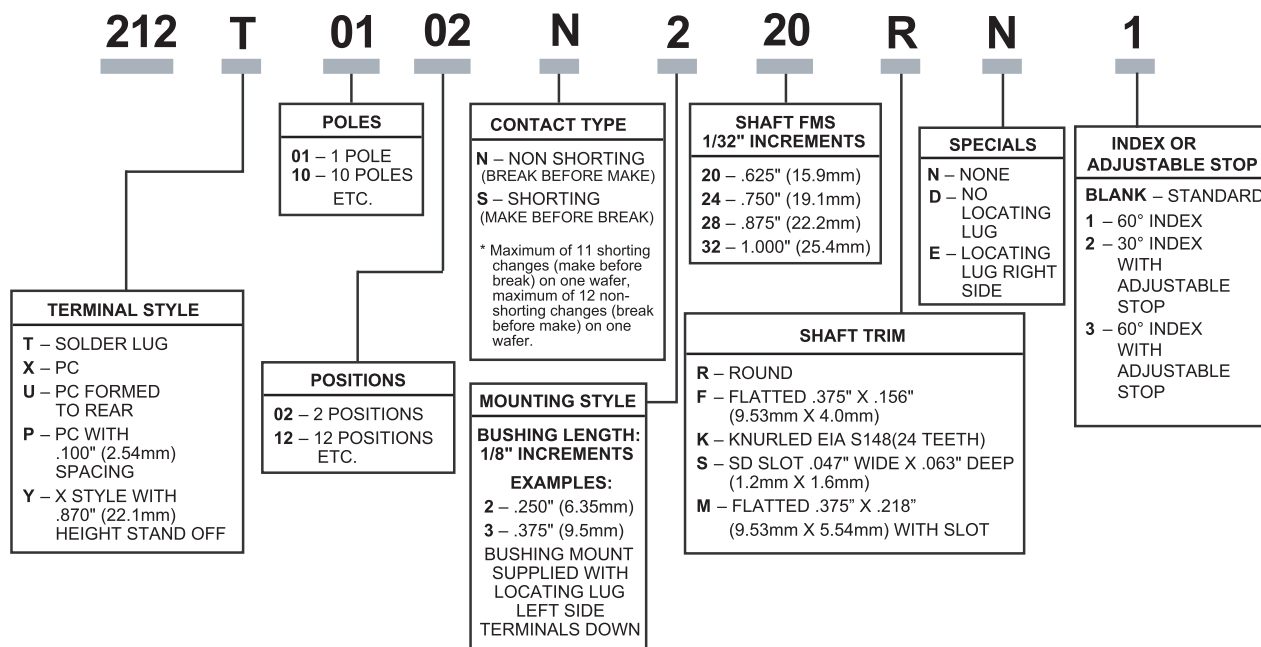
U-Style



P-Style

DIMENSION:  $\frac{\text{mm}}{\text{inch}}$

## Ordering Information



### Note:

Consult CTS for other common standard features not listed.

# AMEYA360

Components Supply Platform

Authorized Distribution Brand :



Website :

Welcome to visit [www.ameya360.com](http://www.ameya360.com)

Contact Us :

➤ Address :

401 Building No.5, JiuGe Business Center, Lane 2301, Yishan Rd  
Minhang District, Shanghai , China

➤ Sales :

Direct    +86 (21) 6401-6692  
Email     amall@ameya360.com  
QQ        800077892  
Skype     ameyasales1 ameyasales2

➤ Customer Service :

Email     service@ameya360.com

➤ Partnership :

Tel        +86 (21) 64016692-8333  
Email     mkt@ameya360.com