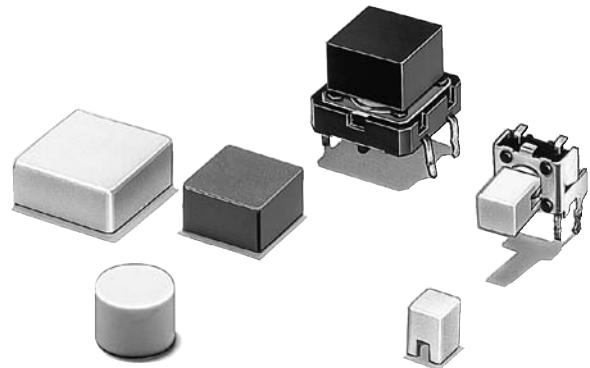


Key Top Designed Specially for Projected-plunger-type B3F, B3FS, and B3W Switches

- Available in a wide range of colors and sizes.

RoHS Compliant



■ List of Models

For B3F, B3FS, and B3W Switches

Color	6 × 6 mm Switches B3F-1000, -1000-G, B3F-3000, -3000-G, -6000, B3W-1000, B3FS-1000			12 × 12 mm Switches B3F-4000, -5000, -5001, B3W-4000, B3FS-4000		
	4 × 4 mm Key Top	6 mm dia. Key Top	D-type Key Top	9 × 9 mm Key Top	12 × 12 mm Key Top	9.5-mm dia.
Ivory	B32-1000	B32-2000	B32-2100	B32-1200	B32-1300	B32-1600
Black	B32-1010	B32-2010	B32-2110	B32-1210	B32-1310	B32-1610
Orange	B32-1020	---	---	B32-1220	B32-1320	B32-1620
Yellow	B32-1030	---	---	B32-1230	B32-1330	B32-1630
Blue	B32-1040	---	---	B32-1240	B32-1340	---
White	B32-1060	---	---	B32-1260	B32-1360	---
Red	B32-1080	---	---	B32-1280	B32-1380	---

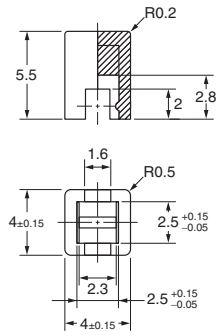
Note: Bulk Packed, 1000 pcs per bag. Order in multiple of the package quantity.

■ Characteristics

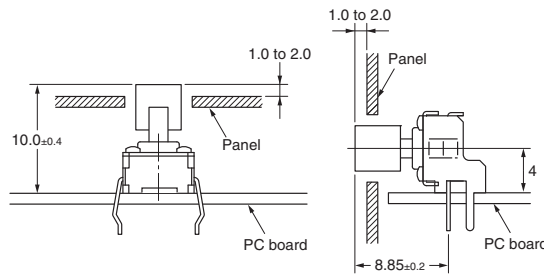
Ambient operating temperature	-25°C to +70°C at 60%RH max. (with no icing or condensation)
Ambient operating humidity	35% to 85% (at 5 to 35°C)

■ Dimensions (Unit: mm)

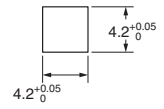
B32-10□0



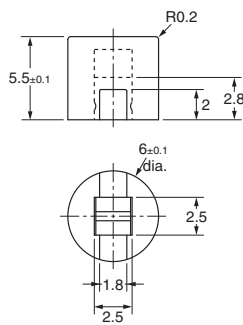
Reference Dimensions



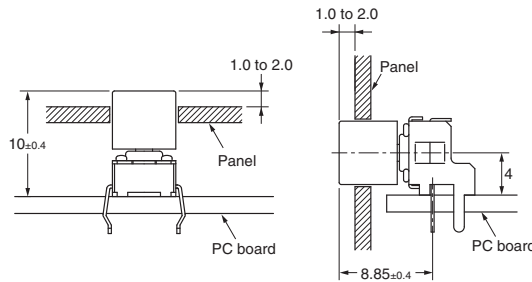
Panel Cutout



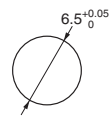
B32-2000
B32-2010



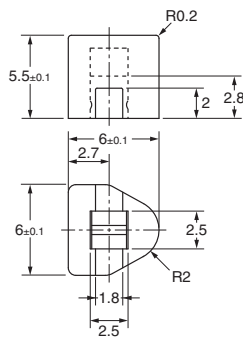
Reference Dimensions



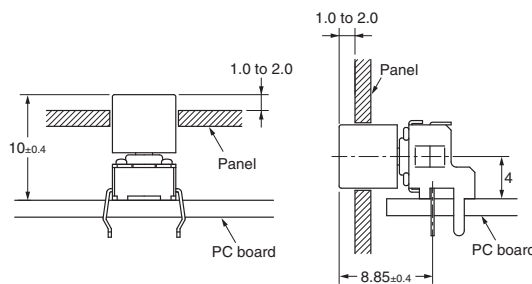
Panel Cutout



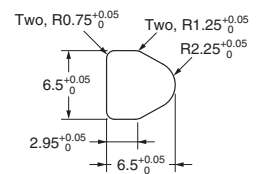
B32-2100
B32-2110



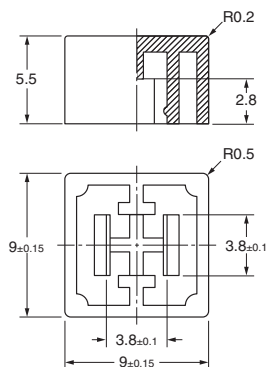
Reference Dimensions



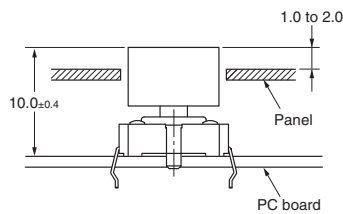
Panel Cutout



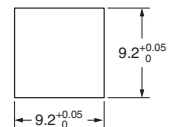
B32-12□0



Reference Dimensions

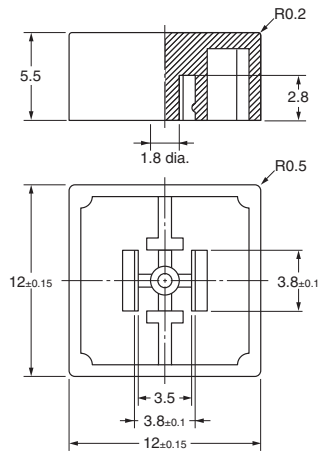
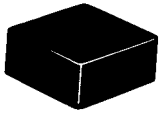


Panel Cutout

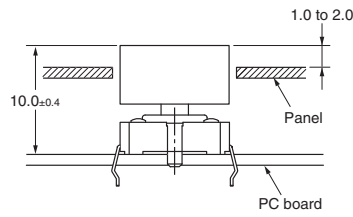


Note: Unless otherwise specified, a tolerance of ± 0.4 mm applies to all dimensions.

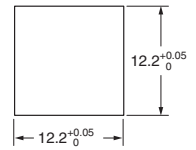
B32-13□0



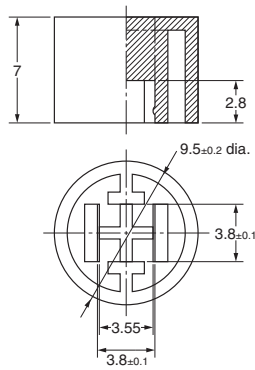
Reference Dimensions



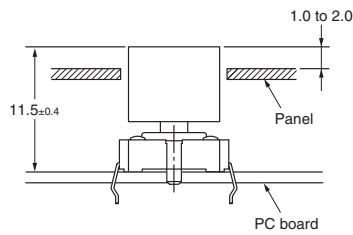
Panel Cutout



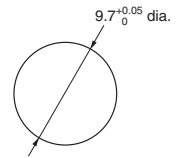
B32-16□0



Reference Dimensions



Panel Cutout



Note: Unless otherwise specified, a tolerance of ± 0.4 mm applies to all dimensions.

■ Precautions

Mount the Key Top on to the Switch after soldering, otherwise the Key Top may be deformed by the soldering heat.

- Application examples provided in this document are for reference only. In actual applications, confirm equipment functions and safety before using the product.
- Consult your OMRON representative before using the product under conditions which are not described in the manual or applying the product to nuclear control systems, railroad systems, aviation systems, vehicles, combustion systems, medical equipment, amusement machines, safety equipment, and other systems or equipment that may have a serious influence on lives and property if used improperly. Make sure that the ratings and performance characteristics of the product provide a margin of safety for the system or equipment, and be sure to provide the system or equipment with double safety mechanisms.

Note: Do not use this document to operate the Unit.

OMRON Corporation
Electronic and Mechanical Components Company

Contact: www.omron.com/ecb

Cat. No. A077-E1-06
1014(0207)(O)

AMEYA360

Components Supply Platform

Authorized Distribution Brand :



Website :

Welcome to visit www.ameya360.com

Contact Us :

➤ Address :

401 Building No.5, JiuGe Business Center, Lane 2301, Yishan Rd
Minhang District, Shanghai , China

➤ Sales :

Direct +86 (21) 6401-6692

Email amall@ameya360.com

QQ 800077892

Skype [ameyasales1](#) [ameyasales2](#)

➤ Customer Service :

Email service@ameya360.com

➤ Partnership :

Tel +86 (21) 64016692-8333

Email mkt@ameya360.com