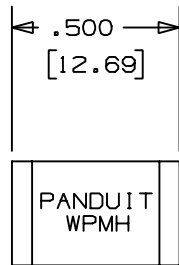
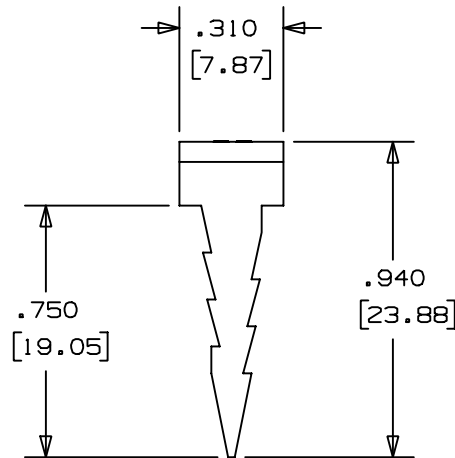
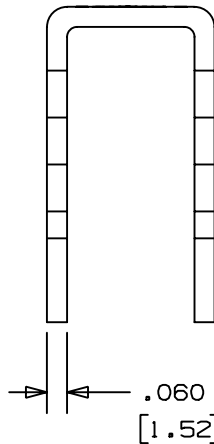
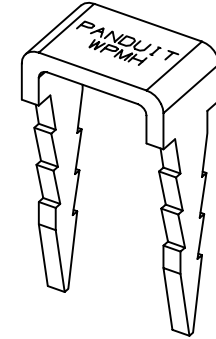


THIS COPY IS PROVIDED ON A RESTRICTED BASIS AND IS NOT TO BE USED IN ANY WAY DETRIMENTAL TO THE INTERESTS OF PANDUIT CORP.



PANDUIT PART NO.	USE WITH THESE CABLE TIE CROSS-SECTIONS	WEIGHT 100 PCS lbs. (g)
WPMH - _	M, I, S, LH, H	0.61 (278)



NOTES:

1. MATERIAL: 16 GA. C.R.S
2. FINISH: ZINC PLATE WITH CLEAR CHROMATE COATING.
3. CABLE TIE CROSS-SECTION CODE:  
M = MINATURE      S = STANDARD  
I = INTERMEDIATE      LH = LIGHT HEAVY  
H = HEAVY
4. FOR USE ON WOOD SURFACES, INSTALLED WITH A COMMON HAMMER.
5. PROTECTIVE GOOGLES SHOULD BE WORN DURING INSTALLATION.

NEITHER SELLER NOR MANUFACTURER SHALL BE LIABLE FOR ANY INJURY, LOSS OR DAMAGE, WHETHER DIRECT OR CONSEQUENTIAL, ARISING OUT OF THE USE OF THIS, OR INABILITY TO USE, THE PRODUCT. USER ASSUMES ALL RISK AND LIABILITY WHATSOEVER IN CONNECTION THEREWITH.

DIMENSIONS IN BRACKETS ARE METRIC [ mm ]

CAD FILENAME/LAYERS

G00239IW\_PB\_WPMH\_00.PRT

**PANDUIT**

CORP.

TINLEY PARK, ILLINOIS

WPMH - WOOD PUSH MOUNT HEAVY

UNLESS OTHERWISE SPECIFIED,  
DIMENSIONAL TOLERANCES ARE:  
(.X) ±0.05 (1.3) (.XXX) ±0.010 (0.25)  
(.XX) ±0.02 (0.5) ANGLES ± 5°

UNLESS OTHERWISE SPECIFIED,  
ALL DIMENSIONS ARE GIVEN  
IN INCHES, THIRD ANGLE PROJECTION.

DRAWN BY  
JAD

MAT'L:

SCALE NONE

DATE  
11/29/01

SEE NOTES  
1 & 2

DRAWING NO.

G00239IW

DWG  
SIZE  
A

R	11/29/01	JAD		INITIAL RELEASE	G00239IW	R						
REV	DATE	BY	CHK	DESCRIPTION	ECN	- R	CUST	SUP				

# AMEYA360

Components Supply Platform

Authorized Distribution Brand :



Website :

Welcome to visit [www.ameya360.com](http://www.ameya360.com)

Contact Us :

➤ Address :

401 Building No.5, JiuGe Business Center, Lane 2301, Yishan Rd  
Minhang District, Shanghai , China

➤ Sales :

Direct     +86 (21) 6401-6692  
  
Email        amall@ameya360.com  
  
QQ            800077892  
  
Skype        ameyasales1 ameyasales2

➤ Customer Service :

Email        service@ameya360.com

➤ Partnership :

Tel            +86 (21) 64016692-8333  
  
Email        mkt@ameya360.com