

H Series Power ROTA-SLIDE® Rotary Switches

Features/Benefits

- **Multi-pole and multi-position**
- **Positive detent**
- **Power switching up to 12 AMPS**
- **Value added capability**
- **RoHS Compliant**

Typical Applications

- **Small appliances**
- **Industrial equipment**
- **Elevators**



Models Available

Specifications

CONTACT RATING: 12 Amps @ 125 V AC; 6 AMPS @ 250 V AC;
1 AMP @ 125 V DC (UL/CSA).
ELECTRICAL LIFE: 10,000 make-and-break cycles at full load.
INSULATION RESISTANCE: $10^9 \Omega$ min.
DIELECTRIC STRENGTH: 1,000 Vrms min. @ sea level.
INDEXING: 45°-one contact models, 8 positions max.; two contact
models, 4 positions max.
OPERATING & STORAGE TEMPERATURE: -30°C to 95°C

Materials

HOUSING & BUSHING: 6/6 nylon (UL 94V-2).
ACTUATOR: 6/6 nylon (UL 94V-2).
CONTACTS & TERMINALS: Copper, silver plated.
CONTACT SPRING: Music wire or stainless steel.
MOUNTING NUT: Steel, zinc plated.
TERMINAL SEAL: Epoxy.

NOTE: Any models supplied with Q, B or G contact material are RoHS compliant.

NOTE: Specifications and materials listed above are for switches with standard options.
For information on specific and custom switches, consult Customer Service Center.

Build-A-Switch

To order, simply select desired option from each category and place in the appropriate box. Available options are shown and described on pages K-26 thru K-27. For additional options not shown in catalog, consult Customer Service Center.

Switch Function H203 DP, 45° Index, 3 pos. H101 SPST, 45° Index H202 DPDT, 45° Index H204 DP, 45° Index, 4 pos.	Actuator 07 .275" high with .156" flat	Mounting Style RR 3/8-40 threaded bushing	Terminations 05 .110" quick connect 01 Solder lug with notch	Contact Material Q Silver
--	---	--	---	--



Dimensions are shown: Inch (mm)
Specifications and dimensions subject to change



K

Rotary

H Series

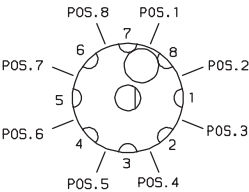
Power ROTA-SLIDE® Rotary Switches

SWITCH FUNCTION

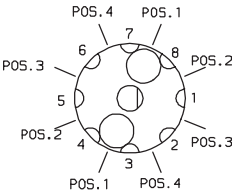
SP MODELS 45° INDEXING			
NO. POLES	MODEL NO.	SWITCH FUNCTION	TERMINALS
SP	H101	SPST	8-1

DP MODELS 45° INDEXING			
NO. POLES	MODEL NO.	SWITCH FUNCTION	TERMINALS
DP	H202	DPDT	7-8-1, 3-4-5
	H203	3 Position	All Terminals
	H204	4 Position	All Terminals

SP MODELS 45° INDEXING SCHEMATIC



DP MODELS 45° INDEXING SCHEMATIC

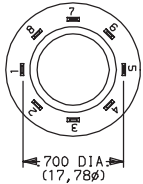
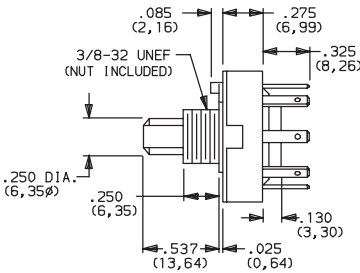
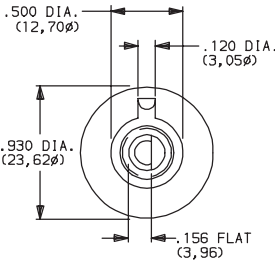


NOTE: Break-before-make contacts. Terminal numbers are molded on bottom of housing. Actuators and contacts are shown in position 1. No common terminal is present. Switching function is provided by movable contacts shorting adjacent pairs of stationary contacts.

All models  with all options.



K
Rotary

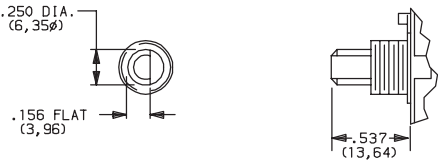


TERM. NOS.
MOLDED ON HOUSING

Part number shown: H10107RR05Q

ACTUATOR

07 .275" HIGH WITH .156" FLAT



Third Angle
Projection

Dimensions are shown: Inch (mm)
Specifications and dimensions subject to change



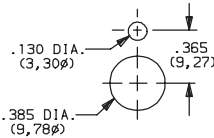
H Series Power ROTA-SLIDE® Rotary Switches

MOUNTING STYLE

RR 3/8-32 THREADED BUSHING



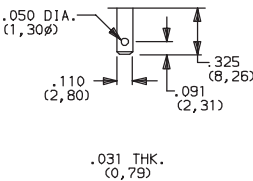
PANEL MOUNTING



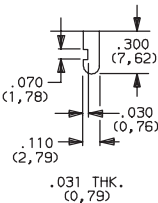
Mounting nut included (part number 175000100).

TERMINATIONS

05 SOLDER LUG WITH HOLE



01 SOLDER LUG WITH NOTCH



Not available on models with 90° indexing.

CONTACT MATERIAL

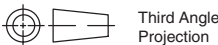
OPTION CODE	CONTACT AND TERMINAL MATERIAL	RATING	
		POWER	
Q	SILVER ¹		12 AMPS @ 125 V AC; 6 AMPS @ 250 V AC; 1 AMP @ 125 V DC.

* Note: See Technical Data section of this catalog for RoHS compliant and compatible definition and specifications.

¹ CONTACTS & TERMINALS: Copper, silver plated.

NOTE: Any models supplied with Q contact material are RoHS compliant.

All models  with all options.



Dimensions are shown: Inch (mm)
Specifications and dimensions subject to change



K

Rotary

AMEYA360

Components Supply Platform

Authorized Distribution Brand :



Website :

Welcome to visit www.ameya360.com

Contact Us :

➤ Address :

401 Building No.5, JiuGe Business Center, Lane 2301, Yishan Rd
Minhang District, Shanghai , China

➤ Sales :

Direct +86 (21) 6401-6692
Email amall@ameya360.com
QQ 800077892
Skype ameyasales1 ameyasales2

➤ Customer Service :

Email service@ameya360.com

➤ Partnership :

Tel +86 (21) 64016692-8333
Email mkt@ameya360.com