

### C-49U

#### Description:

Smoothing chokes are power supply filter chokes having a core with an air gap which prevents saturation at maximum current. Hipot to 1500 VRMS between winding and core for safety.

#### Electrical Specifications (@25C):

Current DC Amps*	Inductance †† Henries*	Resistance Ohms
5.0/10.0	0.032/0.008§	0.19/0.05

†† = Inductance tolerance -20%, + 50 %  
§ = Split winding

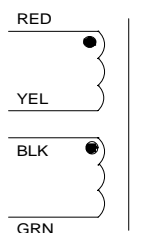
#### Dimensions:

Unit: In inches

A	B	C	D	E
4.250	3.50	3.625	2.750	3.062

Weight: 8.0 lbs.

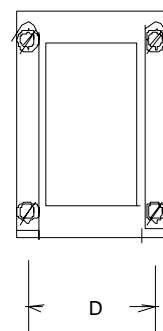
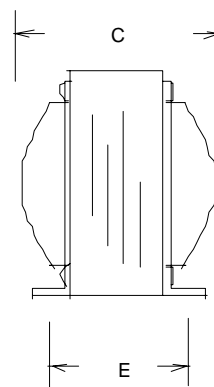
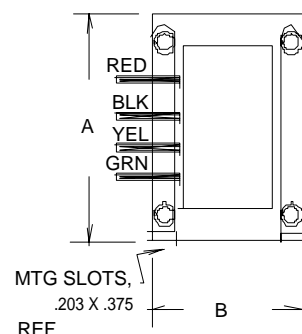
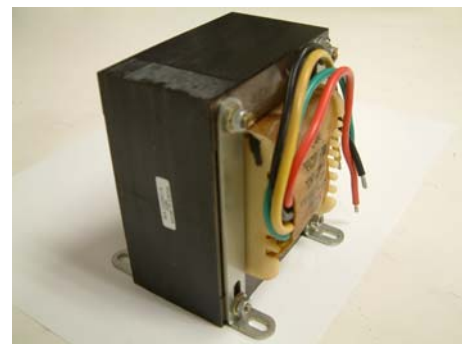
#### Schematic:



\*For 0.032H at 5Amp, connect to RED to GRN, Jumper BLK to YEL  
For 0.008H at 10Amps, connect to RED to YEL, Jumper RED to BLK and YEL to GRN

**RoHS Compliance:** As of manufacturing date February 2005, all standard products meet the requirements of 2002/95/EC, known as the RoHS initiative.

\* Upon printing, this document is considered "uncontrolled". Please contact Triad Magnetics' website for the most current version.



# AMEYA360

## Components Supply Platform

Authorized Distribution Brand :



Website :

Welcome to visit [www.ameya360.com](http://www.ameya360.com)

Contact Us :

➤ Address :

401 Building No.5, JiuGe Business Center, Lane 2301, Yishan Rd  
Minhang District, Shanghai , China

➤ Sales :

Direct +86 (21) 6401-6692

Email [amall@ameya360.com](mailto:amall@ameya360.com)

QQ 800077892

Skype ameyasales1 ameyasales2

➤ Customer Service :

Email [service@ameya360.com](mailto:service@ameya360.com)

➤ Partnership :

Tel +86 (21) 64016692-8333

Email [mkt@ameya360.com](mailto:mkt@ameya360.com)