



Specification

Drawing No.	<i>EQM08-50C-00AG170-00</i>
Issued Date	Nov-05-2012

To Mouser

Note: In case of specification change, KYOCERA Part Number also will be changed.

Customer Part Number	
KYOCERA Part Number	KC5032Axx.xxxxCM0E00
Remarks: This product is Pb-Free and RoHS compliant. Moisture Sensitivity Level (MSL): Level1	

Customer Acceptance

Please sign here and send one copy back to us.

Signature:	
	Accepted Date:

Seller

KYOCERA Corporation

6 Takeda Tobadono-cho, Fushimi-ku, Kyoto,
Japan 612-8501
TEL: +81-75-604-3500
FAX: +81-75-604-3501

Manufacturer

KYOCERA Crystal Device Corporation

1-8-1 Izumihon-cho, Komae, Tokyo,
Japan 201-8648
TEL: +81-3-5497-3110
FAX: +81-3-5497-3208

Design Department	Quality Assurance	Approved by	Checked by	Issued by
KYOCERA Crystal Device Corporation Nagano Okaya Plant Oscillator Division Engineering Department Clock Oscillator Application Engineering Section	<i>M. Morimoto</i>	<i>T. Koyanagi</i>	<i>Y. Saito</i>	<i>T. Asakura</i>

1. Scope

This specification shall be defined of the Clock Oscillator for the integrated circuits (ICs).

2. Customer Part Number

3. KYOCERA Part Number

KC5032Axx.xxxxCM0E00

4. Electrical Characteristics

4-1. Absolute Maximum Rating

Item	Symbol	Rated Value	Units
Power Supply Voltage	V_{CC}	-0.5 to +7.0	V
Input Voltage	V_{IN}	-0.5 to $V_{CC} + 0.5$	V
Storage Temperature Range	T_{STG}	-55 to +125	°C

Note:

If the part is used beyond absolute maximum ratings, it may cause internal destruction. The part should be used under the recommended operating conditions the reliability of this part may be damaged if those conditions are exceeded.

4-2. Recommended Operating Conditions

Item	Symbol	Min	Typ	Max	Units	Remarks
Power Supply Voltage	V_{CC}	1.6	3.3	5.5	V	
Input Voltage	V_{IN}	0	---	V_{CC}	V	
Operating Temperature Range	T_{OPR}	-10	25	+70	°C	

4-3. Electrical Characteristics

Item	Symbol	Min	Typ	Max	Units	Remarks
Frequency Range	F_o	1.789	---	50	MHz	
Frequency Tolerance	F_{tol}	-50	---	+50	ppm	Include initial tolerance, operating temperature range, rated power supply voltage change, load change, aging (1year @25°C), shock and vibration
Current Consumption (Loaded/ $1.6 \leq V_{CC} \leq 2.0V$)	I_{CC}	---	---	3.5	mA	$1.8 \leq f_o \leq 20MHz$
		---	---	4.5		$20 < f_o \leq 40MHz$
		---	---	5.0		$40 < f_o \leq 50MHz$
Current Consumption (Loaded/ $2.0 < V_{CC} \leq 2.8V$)		---	---	4.0		$1.8 \leq f_o \leq 20MHz$
		---	---	5.0		$20 < f_o \leq 40MHz$
		---	---	6.0		$40 < f_o \leq 50MHz$
Current Consumption (Loaded/ $2.8 < V_{CC} \leq 3.63V$)		---	---	5.0		$1.8 \leq f_o \leq 20MHz$
		---	---	6.0		$20 < f_o \leq 40MHz$
		---	---	7.0		$40 < f_o \leq 50MHz$
Current Consumption (Loaded/ $4.5 < V_{CC} \leq 5.5V$)		---	---	7.0		$1.8 \leq f_o \leq 20MHz$
		---	---	8.0		$20 < f_o \leq 40MHz$
		---	---	9.5		$40 < f_o \leq 50MHz$
Standby Current	I_{std}	---	---	10	μA	
Symmetry(Duty Ratio)	SYM	45	50	55	%	@ 50% V_{CC}
Rise Time/ Fall Time (10% V_{CC} to 90% V_{CC})	T_r / T_f	---	---	8.0	ns	$1.6 \leq V_{CC} \leq 2.0V$
		---	---	7.0		$2.0 < V_{CC} \leq 2.8V$
		---	---	6.0		$2.8 < V_{CC} \leq 3.63V$
		---	---	5.0		$4.5 < V_{CC} \leq 5.5V$
Output Voltage-"L"	V_{OL}	---	---	10% V_{CC}	V	$I_{OL} = 4mA$
Output Voltage-"H"	V_{OH}	90% V_{CC}	---	---		$I_{OH} = -4mA$
Output Load	CL	---	---	15	pF	CMOS
Input Voltage-"L"	V_{IL}	---	---	30% V_{CC}	V	
Input Voltage-"H"	V_{IH}	70% V_{CC}	---	---		
Output Disable Time	t_{dis}	---	---	150	ns	
Output Enable Time	t_{ena}	---	---	5	ms	
Start-up Time	t_{sta}	---	---	10	ms	@Minimum operating voltage to be 0sec
1 Sigma Jitter*	J_{Sigma}	---	---	8	ps	$1.8 \leq f_o \leq 40MHz$
		---	---	5		$40 < f_o \leq 50MHz$
Peak to Peak Jitter*	J_{PK-PK}	---	---	80	ps	$1.8 \leq f_o \leq 40MHz$
		---	---	50		$40 < f_o \leq 50MHz$

Note: All electrical characteristics have defined on the maximum loaded and recommended operating conditions.

* Based on Time Interval Analyzer "Wavecrest DTS-2079" with VISI 6.3.1.

Table 1



4-4. Measurement Condition

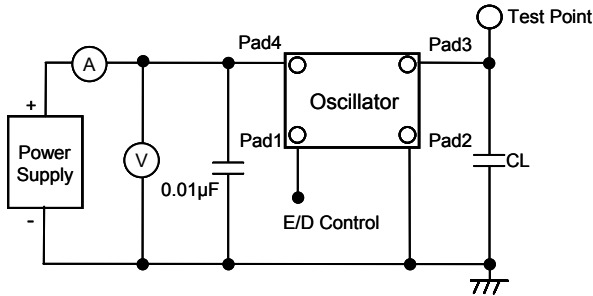
The reference temperature shall be $25 \pm 2^\circ\text{C}$. The measurement shall be performed at the temperature range of 5°C to 35°C unless otherwise the result is doubtful.

4-5. Measurement Circuit

The electrical characteristics shall be measured by test circuit "Fig. 1". Also jitter shall be measured by test circuit "Fig. 3".

4-6. Clock Timing Chart

The clock timing chart is "Fig. 2".



Note: CL includes probe and test fixture capacitance

Fig.1 Test Circuit

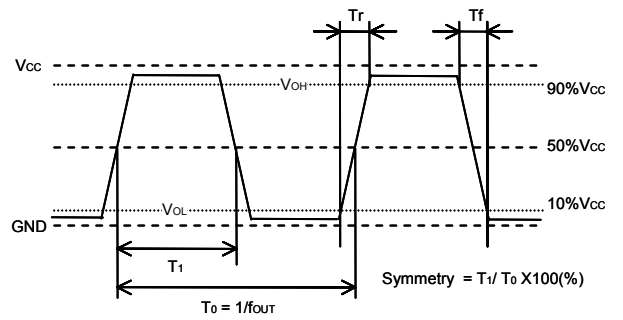


Fig.2 Clock Timing Chart (C-MOS Output)

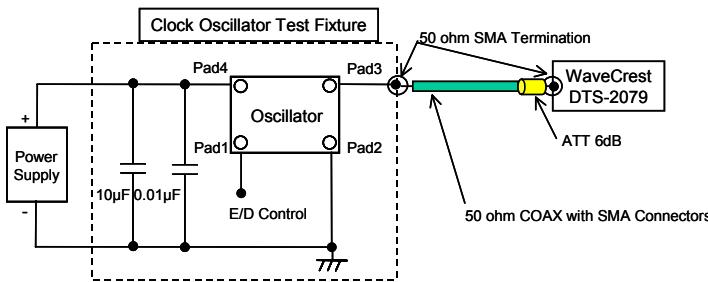
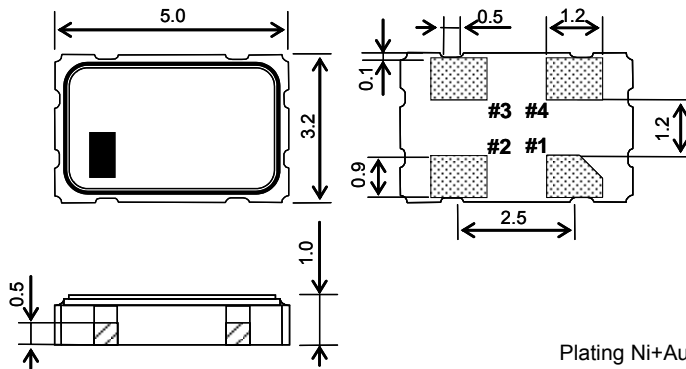


Fig.3 Jitter Test Circuit

<Measurement Conditions>

- Time Interval Analyzer
 - WaveCrest DTS-2079
- Jitter analysis software
 - VISI 6.3.1
- DTS timer calibration
 - Over 30minites warm-up
 - Extend 30minites calibration
- Jitter histogram conditions (Tail-fit)
 - More than 50,000cyc Hits
 - Bit Error Ratio (BER) -12 (14sigma)

5. Dimensions and Marking

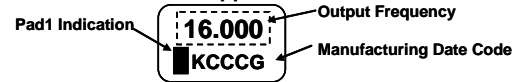


Plating Ni+Au
Tolerance: +/-0.1
Unit:(mm)

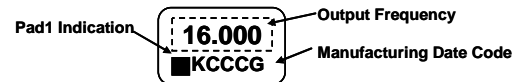
Pad arrangement	
1	Enable/Disable
2	Case GND
3	Output
4	V _{CC}

Enable/Disable Function	
Pad1	Pad3 (Output)
OPEN	Active
"H" Level	Active
"L" Level	High Z (No-Oscillation)

In case of made in Philippines



In case of made in Japan



(e.g. Frequency: 16MHz)

Output Frequency

The output frequency is six-digit including a decimal point. The frequency greater than the number of digits have rounded down. (E.g. 14.31818MHz → "14.318")

Manufacturing Date Code

Year	Code	Year	Code	Month	Code	Day	Code	Day	Code	Day	Code
2001	A	2011	L	1	1	1	1	11	B	21	M
2002	B	2012	M	2	2	2	2	12	C	22	N
2003	C	2013	N	3	3	3	3	13	D	23	P
2004	D	2014	P	4	4	4	4	14	E	24	Q
2005	E	2015	Q	5	5	5	5	15	F	25	R
2006	F	2016	R	6	6	6	6	16	G	26	S
2007	G	2017	S	7	7	7	7	17	H	27	T
2008	H	2018	T	8	8	8	8	18	J	28	V
2009	J	2019	V	9	9	9	9	19	K	29	W
2010	K	2020	W	10	A	10	A	20	L	30	X
It repeats from A in 2021 and afterwards.				11	B	11	B	31	Y		
				12	C	12	C				

e.g. : "C46" means "Apr-6-2003"

Table 2



6. Parts Numbering Guide

KC5032A 25.0000 C M 0 E 00
A B C D E F G

- A. Series (SMD Oscillator)
 - B. Output Frequency (E.g. 25.0000MHz)
 - C. Output
C: C-MOS
 - D. Supply Voltage
M: 1.8V/ 2.5V/ 3.3V/ 5.0V Compatible
 - E. Frequency Tolerance*
0: ±50ppm
 - F. Symmetry (Duty Ratio) and Enable/Disable Function
E: Symmetry: 45% to 55% with Stand-by Function
 - G. Suffix for Individual Requirements
(STD Specification is "00")
- Packing (Tape & Reel 1,000pcs/Reel)
 *Over All Conditions:
 Include initial tolerance, operating temperature range, rated power supply voltage change, load change, aging (1year @25°C), shock and vibration

7. Environmental Characteristics

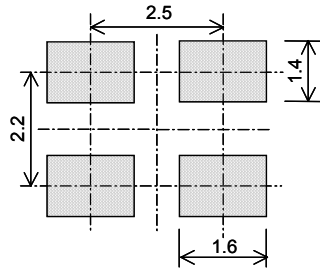
Items	Conditions	Criteria of Acceptance
7-1. Solderability	Soaking: 245±5°C, 5.0±0.5sec	Dipped potion: Minimum 95% coverage
7-2. Soldering Heat Resistance	Reflow soldering: Peak 260°C max, 10sec, Twice max Soldering iron: 380±5°C, 3+1/-0sec, Twice as one time for four pads	Without looseness or crack etc.
7-3. Temperature Cycle	10cycles: -55°C to +125°C (30minuts each/ cycle)	Clause 7-10 shall be satisfied.
7-4. Mechanical Shock (Pulse)	5 times 14,750m/sec ² (1,500G), Duration of pulse 0.5msec (MIL-STD-883D-2002.3 Condition B)	
7-5. Vibration	4 times each axis X, Y, Z: 20 to 2,000Hz and 2,000Hz to 20Hz/cycle Peak acceleration 196m/sec ² (20G) (MIL-STD-883D-2007.2 Condition A)	
7-6. High Temperature	1000 hours: Temperature: 85+5/-3°C	
7-7. Low Temperature	1000 hours: Temperature: -40+5/-3°C	
7-8. Humidity Cycle	10 cycles: Based on 1004 specifications (MIL-STD-883D-1004.7)	Clause 7-1 shall be satisfied.
7-9. Hermeticity 1 (Gross leak)	Soaking: 125°C, 5minutes	No bubbles appeared
7-10. Hermeticity 2 (Fine leak)	Measured by Helium Detector Equipment (MIL-STD-883D-1014.10 Condition A1)	5x10 ⁻⁹ Pa m ³ /sec max

After each testing, the parts shall be subjected to standard atmospheric conditions more than 2 hours. After that, the electrical characteristics shall be measured. The result of the test shall be satisfied **Table 1**.

Table 3



8. Recommended Land pattern and Soldering Guide

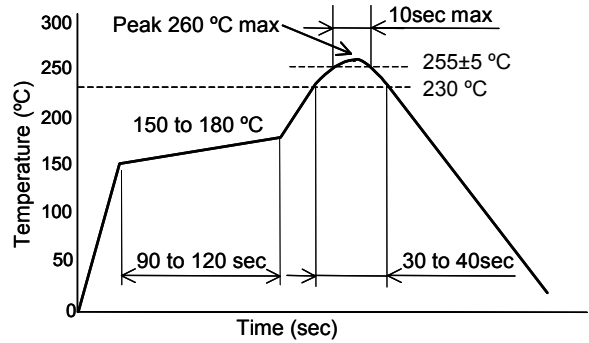


Unit: (mm)

Note:

Since the part doesn't have Bypass Capacitor between V_{cc} and GND, Please mount high frequency type capacitor $0.01\mu F$ to the nearest position of oscillator.

Fig.4 Land pattern

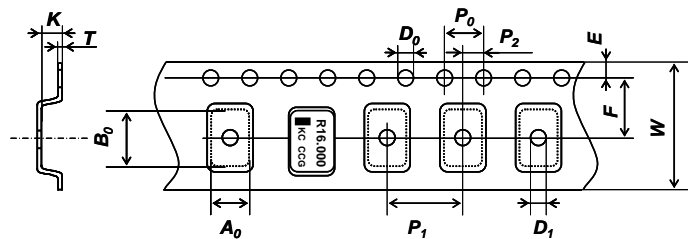


- Available reflow times: Maximum twice
- Fig.5 Reflow profile (Lead Free)**

8-1. Soldering Iron Conditions

- Tip temperature of soldering iron: $380^{\circ}C \pm 5^{\circ}C$, Soldering time: $3sec + 1/-0sec$
- Numbers of soldering iron: Maximum twice as one time for 4 pads

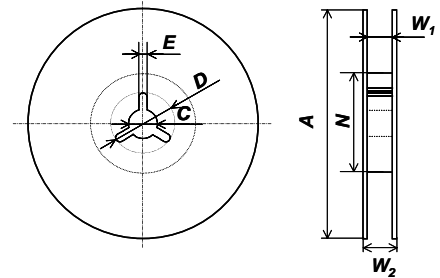
9. Taping Specifications



Unit: (mm)

Symbol	A_0	B_0	W	F	E
Dimensions	3.7 ± 0.1	5.5 ± 0.1	12.0 ± 0.3	5.5 ± 0.05	1.75 ± 0.1
Symbol	P_1	P_2	P_0	D_0	T
Dimensions	8.0 ± 0.1	2.0 ± 0.05	4.0 ± 0.1	$1.5 + 0.1/-0$	0.3 ± 0.05
Symbol	K	D_1			
Dimensions	1.4 ± 0.1	$1.5 + 0.1/-0$			

Fig.6 Emboss Carrier Tape



Unit: (mm)

Symbol	A	N	W_1
Dimensions	$180 + 0/-3$	$60 + 1/-0$	13.0 ± 0.3
Symbol	W_2	C	D
Dimensions	17.0 ± 1.4	13.0 ± 0.2	21.0 ± 0.8
Symbol	E		
Dimensions	2.0 ± 0.5		

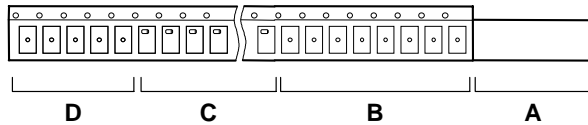
Fig.7 Reel

9-1. Taping Quantities

- The taping of per reel shall be packed 1,000 pcs.
- The parts shall be contained continuously in the pocket.

9-2. Leader and Blank Pockets

- The package shall be consisted of leader, blank pockets and loaded pocket as follows "Fig. 8".
- The power of peeling strength between top tape and carrier tape shall be $0.1N(10gf)$ to $0.7N(70gf)$ as follows "Fig. 9".



- A) Leader
- B) Blank Pockets (40mm to 320mm)
A+B: 500mm to 560mm
- C) Load Pockets
- D) Blank Pocket (40mm min)

Fig.8 Packing Method

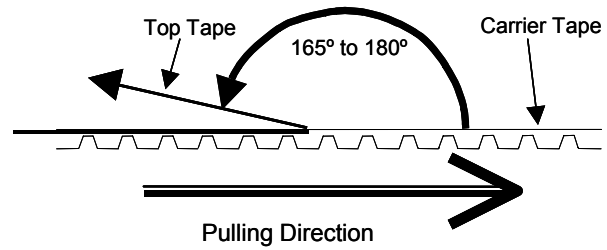


Fig.9 Peeling Strength

9-3. Reel Label

The reel label shall be consisted as below. (Based on EIAJ C-3 format)

- | | |
|-------------------------|------------------|
| A) Customer Part Number | D) Shipping Date |
| B) Lot No. | E) Vender Name |
| C) Quantities | |

9-4. Exterior Package Label

The oscillator shall be packed properly to avoid defect in transportation. The exterior package label shall be consisted as below.

- | | |
|-------------------------|------------------|
| A) Name of Customer | E) Quantities |
| B) P/O No. | F) Shipping Date |
| C) Customer Part Number | G) Vender Name |
| D) Lot No. | |

10. Manufacturing Locations

This part is produced on the following both locations.

- KYOCERA Crystal Device PHILIPPINES, Inc. (Philippines)
- KYOCERA Crystal Device Corporation Nagano Okaya Plant (Japan)

11. The agreement of this specifications

If the something suspicious is that part of the contents of this specification, it shall be resolved by mutual deliberations.

12. Remarks on Usages

- A) Storage Conditions
The parts shall be stored in temperature range of -5 to +40°C, humidity 40 to 60% RH, and avoid direct sunlight. Then the parts shall be used within 6 months.
- B) Handling Conditions
Although the part has protection circuit against static electricity, when excess static electricity is applied, the inside IC may get damaged.
Before mounting on the PCB, please make sure the direction of the part is correct. Otherwise the part of temperature will increase. And also the part will have some damages.
Please do not use the parts under the unfavorable condition such as beyond specified range in this specification.
Please do not use the parts under the condition, in the water or in the salt water also environment of dew or harmful gas.
- C) Soldering Conditions
This product can respond to the general Pb-free reflow profile. The wave soldering can not be supported.
- D) Washing Conditions
Ultra sonic cleaning is available. However there is a possibility that Crystal in the part may cause damaged under certain condition. Therefore please test before using.
After washing, please dry the parts completely. Otherwise water drops between the parts and PCB may cause migration.

In case of using this part without above precaution, Kyocera is unable to guarantee the specific characteristics.



AMEYA360

Components Supply Platform

Authorized Distribution Brand :



Website :

Welcome to visit www.ameya360.com

Contact Us :

➤ Address :

401 Building No.5, JiuGe Business Center, Lane 2301, Yishan Rd
Minhang District, Shanghai , China

➤ Sales :

Direct +86 (21) 6401-6692

Email amall@ameya360.com

QQ 800077892

Skype [ameyasales1](#) [ameyasales2](#)

➤ Customer Service :

Email service@ameya360.com

➤ Partnership :

Tel +86 (21) 64016692-8333

Email mkt@ameya360.com