

SDIP32/SO28 Connection Kit for ST7MDT10-EMU3

DATA BRIEF

The **SDIP32/SO28 Connection Kit** (AC7MDT10-D32/S28) provides the hardware you need to connect your ST7MDT10-EMU3 emulator to your application when debugging applications for ST7 microcontrollers in SDIP32 and SO28 packages.

Connection Kit Contents

- **SDIP32 adapter** (DB510) – Allows the connection of your ST7MDT10-EMU3 emulator to your application board in place of your ST7.
- **SDIP32-SO28 device adapter** (DB359) – Adapts the SDIP32 adapter to SO28 footprint of the ST7 on your application board.

For more information...

- **ST7-EMU3 User Manual** – Information common to all EMU3 series emulators
- **ST7MDT10-EMU3 Probe User Guide** – Information specific to ST7MDT10-EMU3

Figure 2. SDIP32 application connection

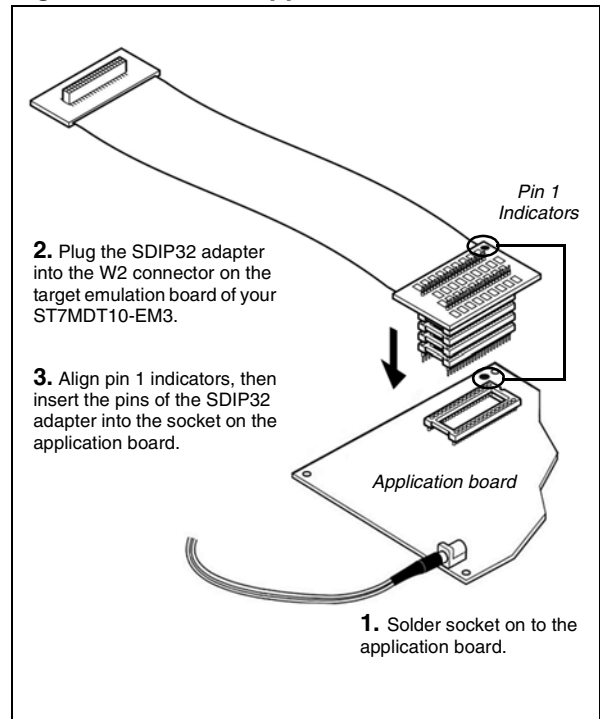


Figure 1. SDIP32 adapter

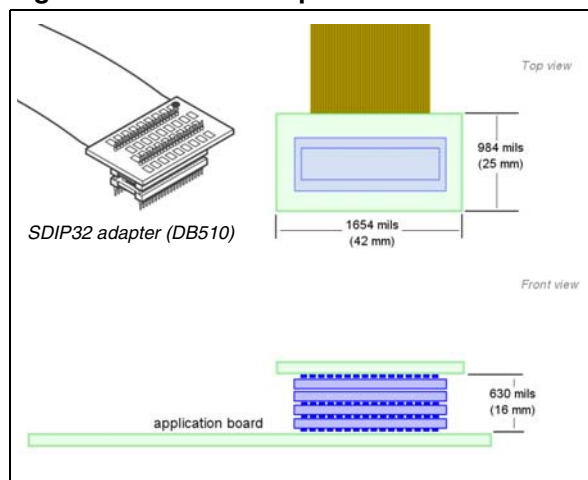


Figure 3. SDIP32 to SO28 device adapter

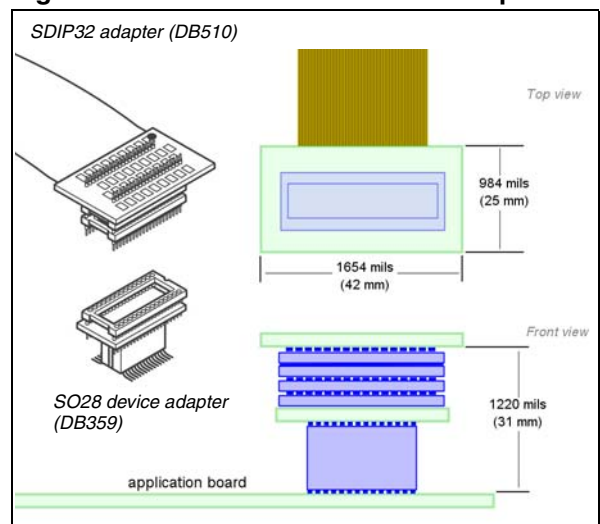
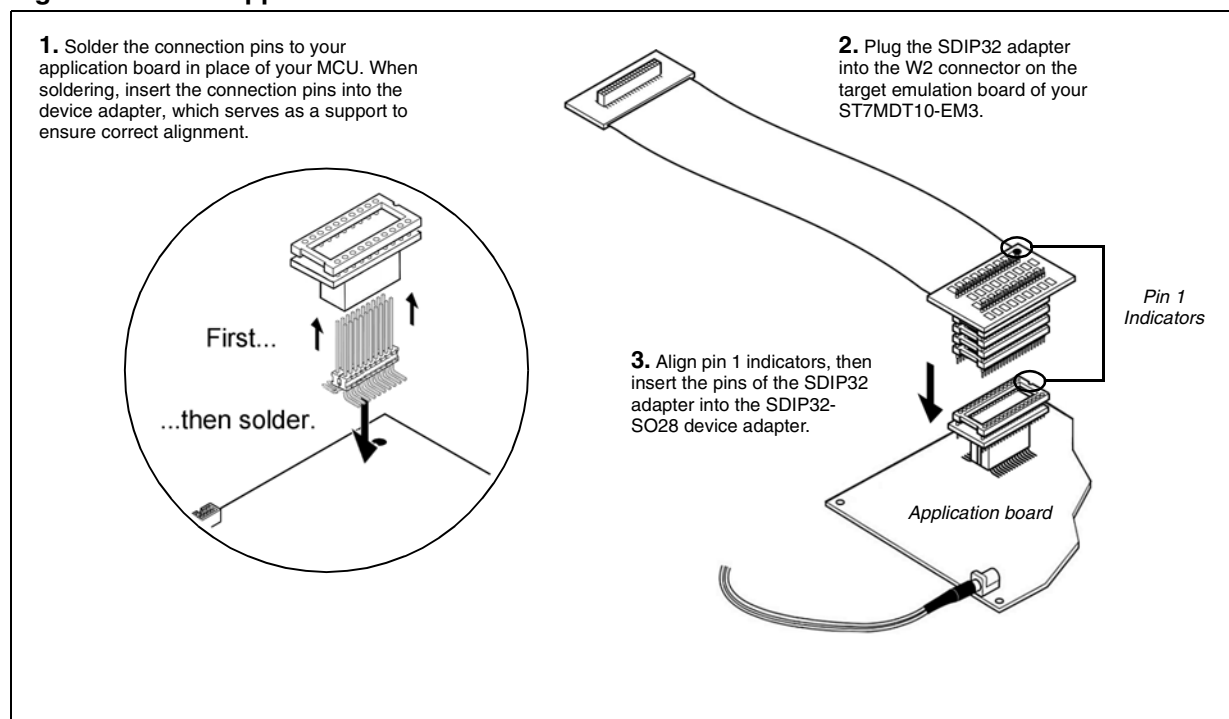


Figure 4. SO28 application board connection

Revision history

Date	Revision	Changes
14-November-2005	1	Initial release.

Information furnished is believed to be accurate and reliable. However, STMicroelectronics assumes no responsibility for the consequences of use of such information nor for any infringement of patents or other rights of third parties which may result from its use. No license is granted by implication or otherwise under any patent or patent rights of STMicroelectronics. Specifications mentioned in this publication are subject to change without notice. This publication supersedes and replaces all information previously supplied. STMicroelectronics products are not authorized for use as critical components in life support devices or systems without express written approval of STMicroelectronics.

The ST logo is a registered trademark of STMicroelectronics.
All other names are the property of their respective owners

© 2005 STMicroelectronics - All rights reserved

STMicroelectronics group of companies

Australia - Belgium - Brazil - Canada - China - Czech Republic - Finland - France - Germany - Hong Kong - India - Israel - Italy - Japan -
Malaysia - Malta - Morocco - Singapore - Spain - Sweden - Switzerland - United Kingdom - United States of America

www.st.com



AMEYA360

Components Supply Platform

Authorized Distribution Brand :



Website :

Welcome to visit www.ameya360.com

Contact Us :

➤ Address :

401 Building No.5, JiuGe Business Center, Lane 2301, Yishan Rd
Minhang District, Shanghai , China

➤ Sales :

Direct +86 (21) 6401-6692

Email amall@ameya360.com

QQ 800077892

Skype ameyasales1 ameyasales2

➤ Customer Service :

Email service@ameya360.com

➤ Partnership :

Tel +86 (21) 64016692-8333

Email mkt@ameya360.com