



Compact Automotive Connectors for PCB-to-Cable Applications

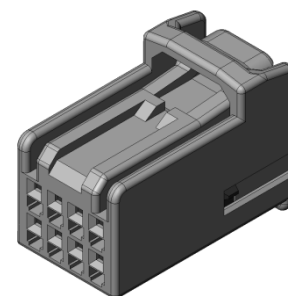
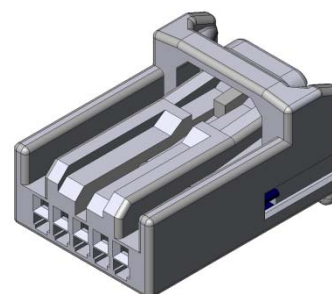
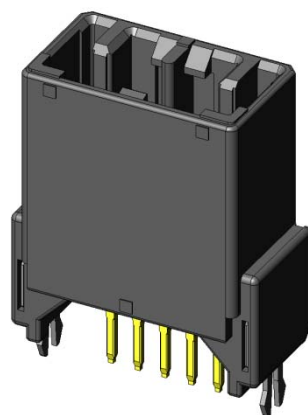
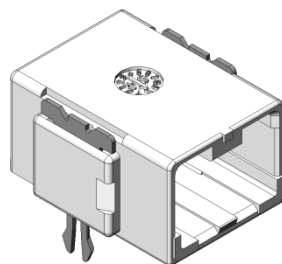
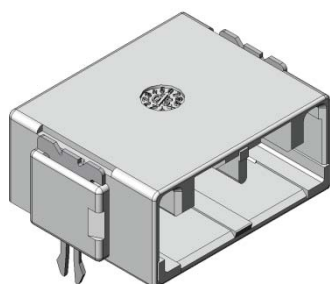
CONNECTOR

MB-0175-1

## MX34 Series (for Low Pin Counts)

October 2007

**RoHS Compliant**



Compact, single row type connectors have been developed to add to the existing line of MX34 Series connectors for automobiles.

The available pin counts are 3, 5 and 7 positions, available in straight and angle pin header type. (Straight type is available in 5 and 7 positions)

Hook pins are placed on both sides for easier board attachment. An 8 position, double row type has also been developed.

### Features

- Compact, single row PCB-to-cable connector with 2.2 mm horizontal pitch.  
(8 pos. is available in double row, 2.4mm pitch)
- Hook pins are placed on both sides for easier board attachment.
- Socket contact with box-type pin header is durable in external forces; contact is highly resistant to twisting and equipped with a proven double leaf spring.  
(In common with MX34 Series double row type)
- Adoption of a preset-type retainer facilitates easy wire harness operation.  
If retainer is not completely inserted in housing, the connector is not engaged, and incomplete contact insertion is detected.
- Lock spring is equipped with a bridge protecting the contacts from external load.

### General Specifications

- |   |   |
|---|---|
| • No. of Contacts: Single row 3, 5, 7 pos.<br>Double row 8 pos. | • Rated Current: 3A                             |
| • Contact Resistance:<br>5m $\Omega$ max. (initial)             | • Insulation Resistance: 100M $\Omega$ min.     |
| • Dielectric Withstanding Voltage:<br>AC 1000V (per minute)     | • Durability: 50 times                          |
| • Operating Temperature:<br>-40 Deg. C to +85 Deg. C            | • Applicable Wire:<br>Please refer to next page |

## Materials and Finishes

### •Socket Connector

Component	Material and Finish
Socket Housing	PPE+PA66 (ALLOY)
Retainer	PPE+PA66 (ALLOY)

### •Pin Connector

Component	Material and Finish
Pin Insulator	SPS GF 30
Pin Contact	Brass / Sn plating
Hook Pin	Copper alloy / Sn plating

### •Socket Contact

Component	Material and Finish
Socket Contact	Highly conductive material / Sn plating

## Applicable Wire

Part Number	Applicable Wire	SJ Drawing
M34S75C4F1	AVSS0.3mm <sup>2</sup> , CHFUS0.22mm <sup>2</sup> ~0.35mm <sup>2</sup>	SJ038527
M34S75C4F2	AVSS0.5mm <sup>2</sup> , CHFUS0.5mm <sup>2</sup> ~0.75mm <sup>2</sup>	SJ038528
M34S75C4F3	CAN SD 0.35mm <sup>2</sup> (Note1)	SJ038747
M34S75C4F4	AVSS0.85mm <sup>2</sup> (Note1)	SJ038893

Note 1: M34S75CF3 and M34S75CF4 can only be inserted in double row cavities on both sides, two housing cavities in total.

(8 position type can be inserted in any area.)

## Crimp Tool

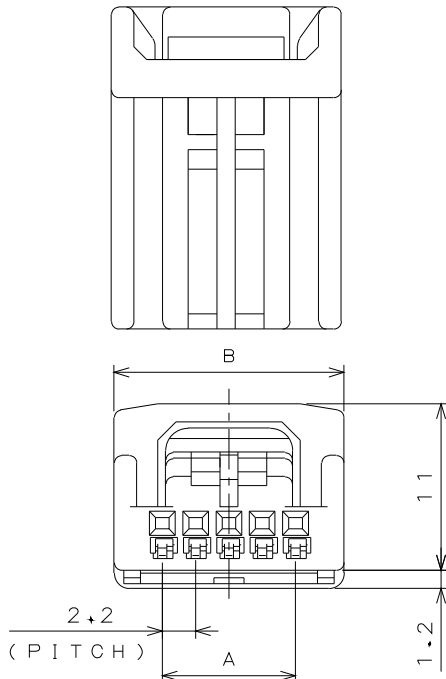
Part Number	Hand Crimp Tool	Semi Automatic Applicator	Automatic Applicator
M34S75C4F1	CT150-2-MX34	350-MX34D-2	350-MX34D-3B
M34S75C4F2	CT150-1-MX34		
M34S75C4F3, 4	-----	350-MX34C-2	350-MX34C-3B

## Withdrawal Tool

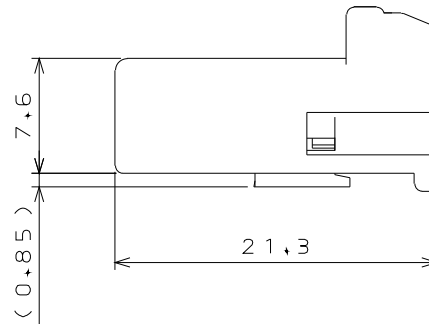
ET-MX34-1

## Outer Dimensions

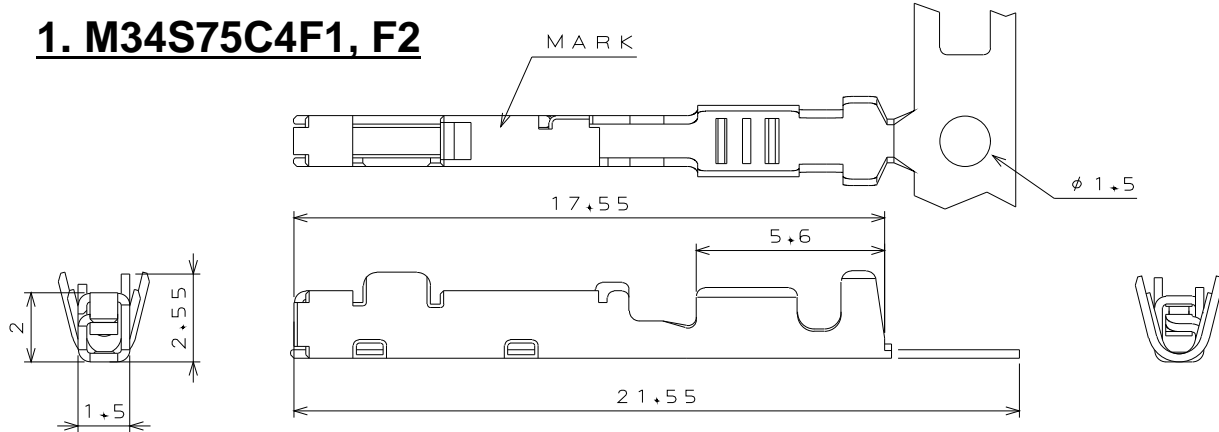
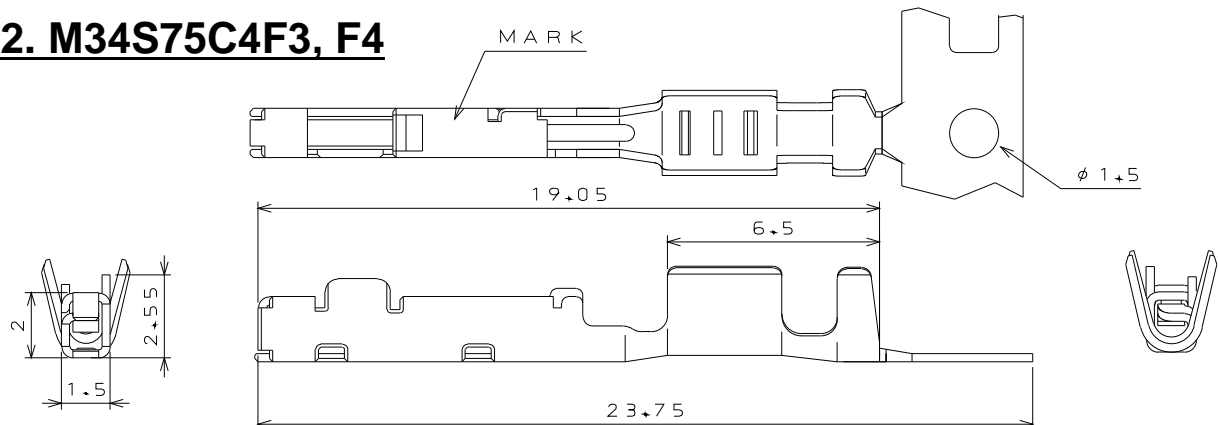
## •Socket Housing



No. of	Part Number	SJ Drawing	Diameter of each area	
			A	B
3	MX34003SF1	SJ100823	4.4	10.8
5	MX34005SF1	SJ100825	8.8	15.2
7	MX34007SF1	SJ104416	13.2	19.6



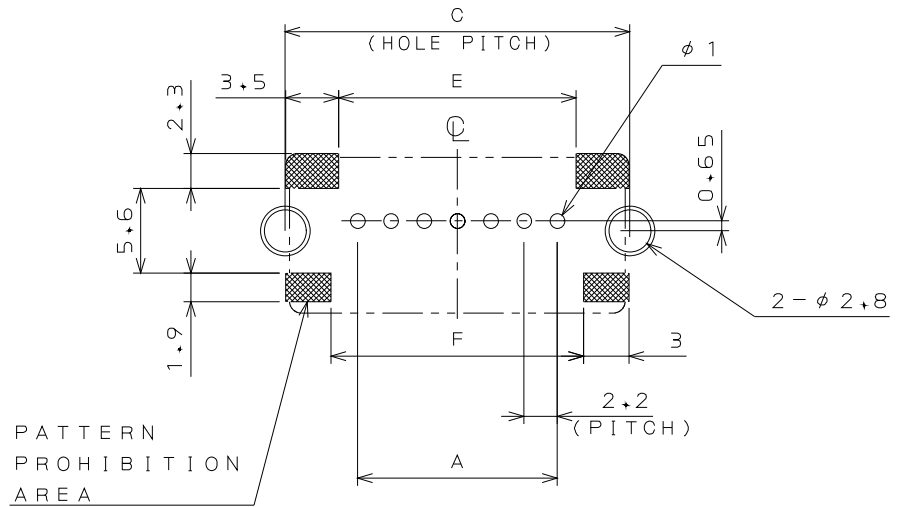
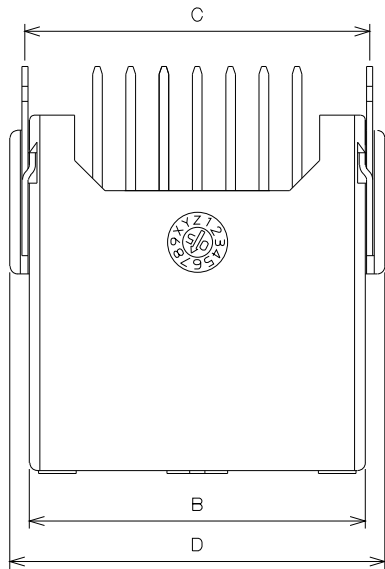
## •Socket Contact

**1. M34S75C4F1, F2****2. M34S75C4F3, F4**

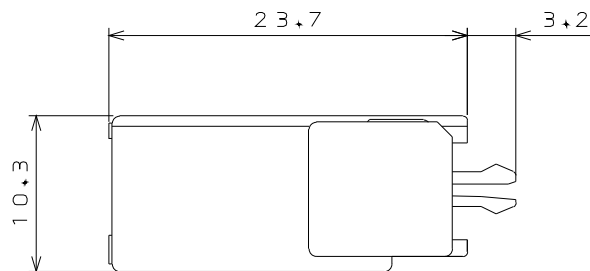
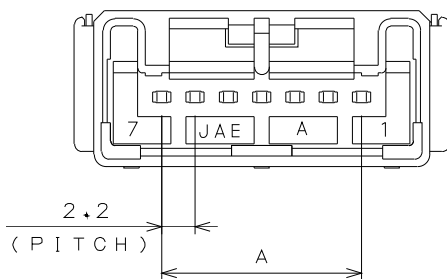


---

## •Straight Pin Header



APPLICABLE P.C.B. HOLE LOCATION (REF.)



No. of pos.	Part Number	SJ Drawing	Diameter of each area					
			A	B	C	D	E	F
5	MX34005UF1	SJ104369	8.8	17.8	18.4	20.4	11.3	12.3
7	MX34007UF1	SJ104370	13.2	22.2	22.8	24.8	15.7	16.7

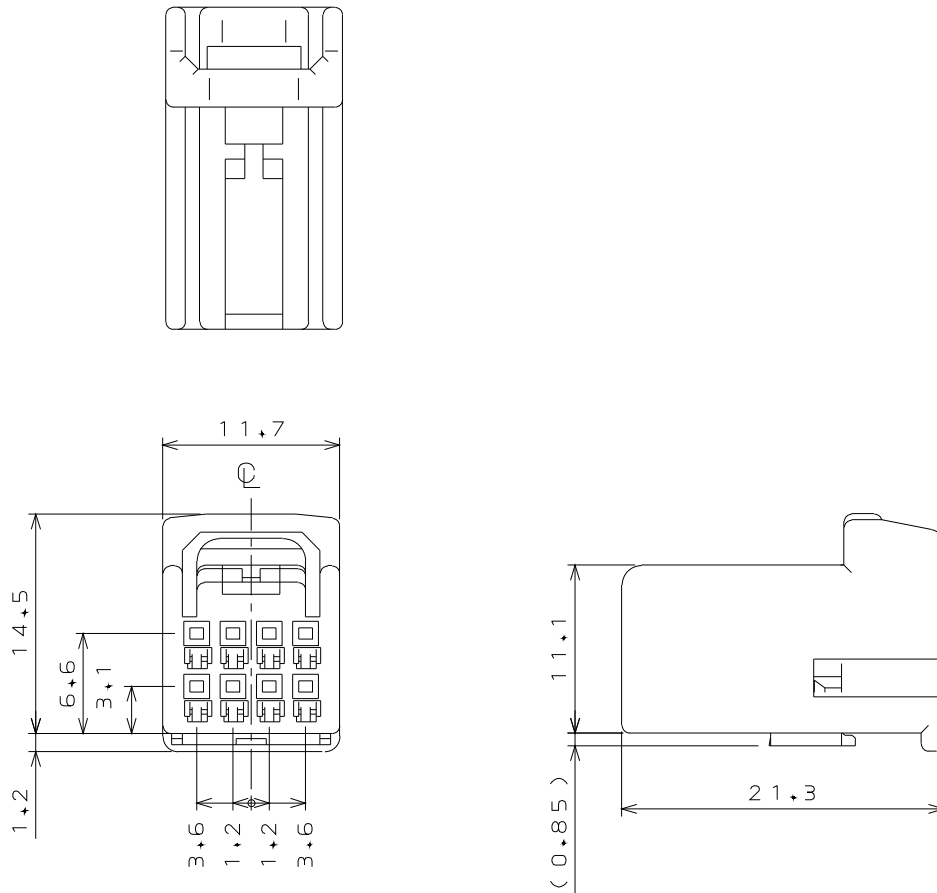
Note 1: 3 position not available for straight pin header

## 6/7

- 
- HOUSING EXTERNAL PROJECTION LINE
- 8-φ1
- (2-φ3.3)  
(LAND)
- 2-φ2.8  
(THROUGH HOLE PLATED)  
(PCB END)
- PATTERN PROHIBITION AREA
- APPLICABLE P.C.B. HOLE LOCATION(REF.)

## Shape of Double Row 8 Position Type

### •Socket Housing (MX34E08SF1) SJ Drawing: SJ106203



### Others

Specification

JACS-1754

Handling Instructions

JAHL-1754

**Notice:** Products shown in this brochure are made for the applications listed below. However, if the above-mentioned products are to be used in aerospace devices, marine cable-connection devices, atomic power control systems, medical equipment for life-support systems, or any other specific application requiring extremely high reliability, please contact JAE for further information.

Recommended applications: Computers, Office machines, Measuring devices, Telecommunication devices (Terminals, Mobile devices), AV devices, Household applications, FA devices, etc.

### Japan Aviation Electronics Industry, Limited

Product Marketing Division  
Aobadai Building, 3-1-19, Aobadai, Meguro-ku, Tokyo 153-8539  
Phone: +81-3-3780-2787 FAX: +81-3-3780-2946

\* The specifications in this brochure are subject to change without notice. Please contact JAE for information.

# AMEYA360

## Components Supply Platform

### Authorized Distribution Brand :



### Website :

Welcome to visit [www.ameya360.com](http://www.ameya360.com)

### Contact Us :

#### ➤ Address :

401 Building No.5, JiuGe Business Center, Lane 2301, Yishan Rd  
Minhang District, Shanghai , China

#### ➤ Sales :

Direct +86 (21) 6401-6692

Email [amall@ameya360.com](mailto:amall@ameya360.com)

QQ 800077892

Skype ameyasales1 ameyasales2

#### ➤ Customer Service :

Email [service@ameya360.com](mailto:service@ameya360.com)

#### ➤ Partnership :

Tel +86 (21) 64016692-8333

Email [mkt@ameya360.com](mailto:mkt@ameya360.com)