

### SPECIFICATIONS

**Material:** HEXSEALS: Silicone rubber conforms to A-A-59588 Class III, GR 60 unless otherwise specified.

**Mounting Nut:** HEXSEALS: Brass, nickel-plated (unless otherwise noted)

**Temperature Range:** HEXSEALS: -94°F to +400°F

**Pressure Range:** Exceeds 15 psi internal and 1500 psi external.

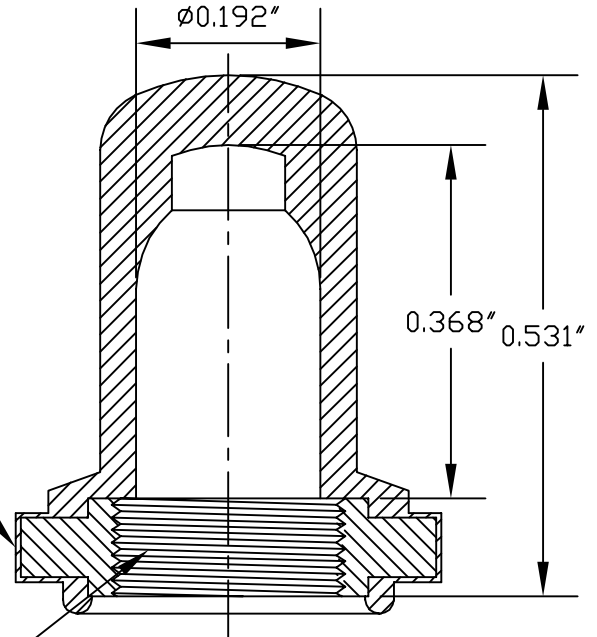
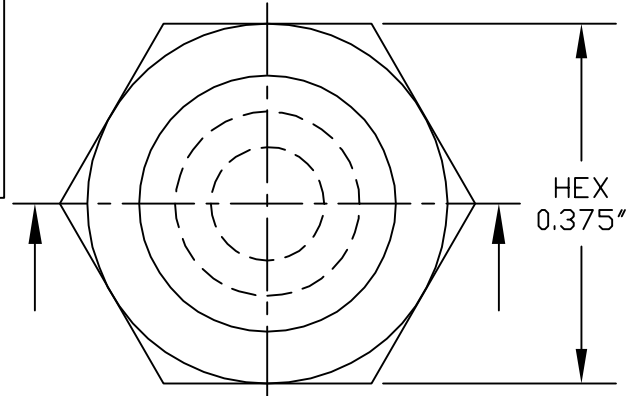
**Operational Life:** 50,000 actuations (minimum).

**Shelf Life:** Excess of 25 years.

**Resistant to:** Salt spray, sunlight, ozone, weather, fungus, and most acids and lubricating oils

**Agency Recognition:** E-SEELS and HEXSEALS are UL-listed to UL Std. 50 types 1-13, and meet CSA standards.

**Installation:** If a reducing adaptor is required - see page 14 of HEXSEAL catalog HEX200 for part numbers and drawing.



1/4-40 NS-2B

K	MAT'L CHANGED and REDRAWN-DRAWING REVISED				09.09.09		
J	REDRAWN-DRAWING REVISED- ID ADUSJSTED				09.12.06		
I	CAD COMPUTER GENERATED				09.23.02		
H	UPDATED, ADDED ORDER NUMBERS, DWG NO. WAS 12/31/SERIES			W.P.	11.24.76		
G	UPDATED			R.C.	08.04.24		
F	REDRAWN			TONY C.	12.11.69		
REV.	DESCRIPTION				DATE		
MAXIMUM AND MINIMUM MEASUREMENTS ARE STATED DIRECTLY ON EACH DIMENSION.		TITLE:	BOOT, PUSH BUTTON (1231/31)		ENG.	M.MORSE	01.21.60
					DWN.	S.ANDREWS	01.21.60
					CHKD.	B.GLICKSMAN	01.21.60
MAT'L: SILICONE RUBBER A-A-59588 CLIII GR60		APM-HEXSEAL CORPORATION	SCALE 5 : 1	DWG. NO. (1231/31) HEXSEAL®			
FINISH: GRAY							

THIS DRAWING COVERS PROPRIETARY ITEM AND IS THE PROPERTY OF THE APM-HEXSEAL CORPORATION.  
THIS DRAWING IS NOT TO BE COPIED OR USED WITHOUT THE WRITTEN APPROVAL OF AN OFFICER OF THE APM-HEXSEAL CORPORATION.

# AMEYA360

Components Supply Platform

Authorized Distribution Brand :



Website :

Welcome to visit [www.ameya360.com](http://www.ameya360.com)

Contact Us :

➤ Address :

401 Building No.5, JiuGe Business Center, Lane 2301, Yishan Rd  
Minhang District, Shanghai , China

➤ Sales :

Direct      +86 (21) 6401-6692  
  
Email        amall@ameya360.com  
  
QQ           800077892  
  
Skype        ameyasales1 ameyasales2

➤ Customer Service :

Email        service@ameya360.com

➤ Partnership :

Tel           +86 (21) 64016692-8333  
  
Email        mkt@ameya360.com