

Auto Line Transformer

- ~ Single winding for use where equipment is already isolated and only voltage change is required
- ~ **Does not provide isolation**
- ~ Input is circuit breaker protected
- ~ Hi-pot tested to 2 KV RMS
- ~ Standard 3-wire, grounded plug (can also be used with adaptors for proper grounding)
- ~ Input connected to a 5 foot cord & grounded North American 230V plug
- ~ Output connected to a standard N. American 115V - 3 wire grounded receptacle (NEMA 5-15R)
- ~ North American Mark of Safety: cUL & UL listed



230VAC to 115VAC

Step Down (North American 230V Plug & 115V Receptacle)

Part No.	Capacity VA	Dimensions (Inches)			Mounting Hole Centers (Inches)		Shipping Weight
		W	D	H	W	D	
175A-NA	100	3.16	4.25	3.81	2.50	2.94	3.5
175B-NA	200	3.16	4.50	3.81	2.50	3.19	4.5
175C-NA	300	3.16	5.00	3.81	2.50	3.69	6.0
175D-NA	500	3.80	6.00	4.68	3.00	4.38	10.0
175E-NA	750	3.80	7.06	4.68	3.00	5.38	14.0
175F-NA	1000	3.80	7.06	4.68	3.00	5.38	14.5
175G-NA	1500	4.40	6.63	5.39	3.50	6.09	22.0



- ~ Single winding for use where equipment is already isolated and only voltage change is required
- ~ **Does not provide isolation**
- ~ Input is circuit breaker protected
- ~ Hi-pot tested to 2 KV RMS
- ~ Standard 3-wire, grounded plug (can also be used with adaptors for proper grounding)
- ~ Input connected to a 5 foot cord & standard grounded European (Schuko) plug
- ~ Output connected to a standard N. American 115V - 3 wire grounded receptacle (NEMA 5-15R)
- ~ North American Mark of Safety: cUL & UL listed



230VAC to 115VAC

Step Down (European Plug & North American Receptacle)

Part No.	Capacity VA	Dimensions (Inches)			Mounting Hole Centers (Inches)		Shipping Weight
		W	D	H	W	D	
175A-EU	100	3.16	4.25	3.81	2.50	2.94	3.5
175B-EU	200	3.16	4.50	3.81	2.50	3.19	4.5
175C-EU	300	3.16	5.00	3.81	2.50	3.69	6.0
175D-EU	500	3.80	6.00	4.68	3.00	4.38	10.0
175E-EU	750	3.80	7.06	4.68	3.00	5.38	14.0
175F-EU	1000	3.80	7.06	4.68	3.00	5.38	14.5
175G-EU	1500	4.40	6.63	5.39	3.50	6.09	22.0



Auto Line Transformer

- ~ Single winding for use where equipment is already isolated and only voltage change is required
- ~ **Does not provide isolation**
- ~ Input is circuit breaker protected
- ~ Hi-pot tested to 2 KV RMS
- ~ Standard 3-wire, grounded plug (can also be used with adaptors for proper grounding)
- ~ Input is connected to a 5 foot cord & standard grounded North American plug (NEMA 5-15P)
- ~ Output is connected to a grounded European (Schuko) receptacle
- ~ North American Mark of Safety: cUL & UL listed



115VAC to 230VAC Step Up Transformer



Part No.	Capacity VA	Dimensions (Inches)			Mounting Hole Centers (Inches)		Shipping Weight
		W	D	H	W	D	
176A	120	3.16	4.25	3.81	2.50	2.94	3.5
176B	200	3.16	4.50	3.81	2.50	3.19	4.5
176C	300	3.16	5.00	3.81	2.50	3.69	6.0
176D	500	3.80	6.00	4.68	3.00	4.38	10.0
176E	750	3.80	7.06	4.68	3.00	5.38	14.0
176F	1000	3.80	7.06	4.68	3.00	5.38	14.5
176G	1500	4.40	6.63	5.39	3.50	6.09	22.0

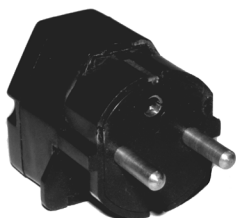
International - Grounded Adaptor Plugs

- ~ For use with our 171, 172, 175 & 176 series transformers.
- ~ Heavy duty design with plastic shell and double wipe contacts.
- ~ Allows for ground connection between equipment and international power sources.
- ~ With a set of all 4 adaptors, they will accept equipment with plugs from virtually every country South Africa
- ~ **Adaptors do not affect voltages**, they are a mechanical device only to match foreign "pinouts" of receptacles and/or plugs.

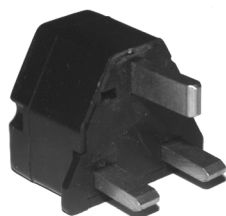


Rear View of all adaptors

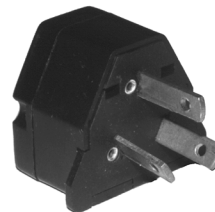
Part No.	Grounded Plug Type	Used in the Countries of:
298G4	European	Austria, Belgium, Finland, France, Germany, Middle East, Netherlands, Norway, Parts of Africa/Asia/South America/China/Tahiti & Caribbean, Sweden
298G3	British	Hong Kong, Ireland, Malaysia, Parts of Africa/Caribbean, Singapore, U.K.
298G6	Australian	Australia, People's Republic of China, S. Pacific Islands, New Zealand
298G7	N. American	Canada, Parts of the Caribbean/South America, Philippines, USA



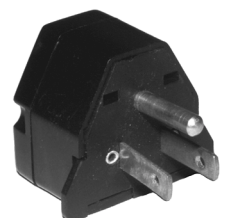
298G4



298G3



298G6



298G7



Hammond Manufacturing Co. Ltd.
394 Edinburgh Rd. North
Guelph, Ontario N1H 1E5 CANADA
© Phone: 519-822-2960 Fax: 519-822-0715



Hammond Manufacturing Co. Inc.
256 Sonwil Dr.
Cheektowaga, NY 14225 USA
Phone: 716-651-0086 Fax: 716-651-0726

AMEYA360

Components Supply Platform

Authorized Distribution Brand :



Website :

Welcome to visit www.ameya360.com

Contact Us :

➤ Address :

401 Building No.5, JiuGe Business Center, Lane 2301, Yishan Rd
Minhang District, Shanghai , China

➤ Sales :

Direct +86 (21) 6401-6692

Email amall@ameya360.com

QQ 800077892

Skype [ameyasales1](#) [ameyasales2](#)

➤ Customer Service :

Email service@ameya360.com

➤ Partnership :

Tel +86 (21) 64016692-8333

Email mkt@ameya360.com