

RF Power MOSFET Transistor 100W, 100-500 MHz, 28V

M/A-COM Products
Released - Ver 08.07

Features

- N-channel enhancement mode device
- DMOS structure
- Lower capacitances for broadband operation
- High saturated output power
- Lower noise figure than competitive devices
- RoHS Compliant

ABSOLUTE MAXIMUM RATINGS AT 25° C

Parameter	Symbol	Rating	Units
Drain-Source Voltage	V_{DS}	65	V
Gate-Source Voltage	V_{GS}	20	V
Drain-Source Current	I_{DS}	12*	A
Power Dissipation	P_D	250	W
Junction Temperature	T_J	200	°C
Storage Temperature	T_{STG}	-55 to +150	°C
Thermal Resistance	θ_{JC}	0.7	°C/W

TYPICAL DEVICE IMPEDANCES

F (MHz)	Z_{IN} (Ω)	Z_{LOAD} (Ω)
100	4.5-j6.0	14.5+j0.5
300	2.25-j1.75	7.5+j1.0
500	1.5+j5.5	3.5+j3.5
$V_{DD}=28V$, $I_{DQ}=600$ Ma, $P_{OUT}=100.0$ W		

Z_{IN} is the series equivalent input impedance of the device from gate to gate.

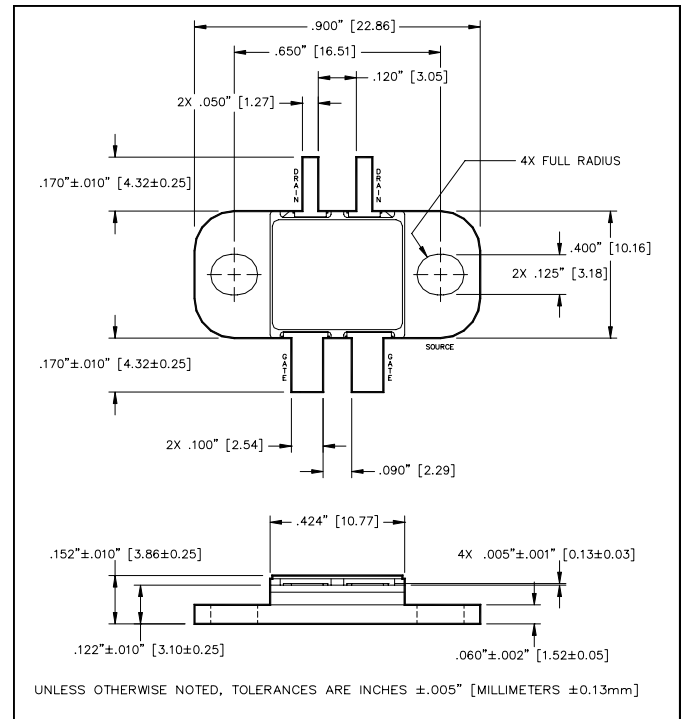
Z_{LOAD} is the optimum series equivalent load impedance as measured from drain

ELECTRICAL CHARACTERISTICS AT 25°C

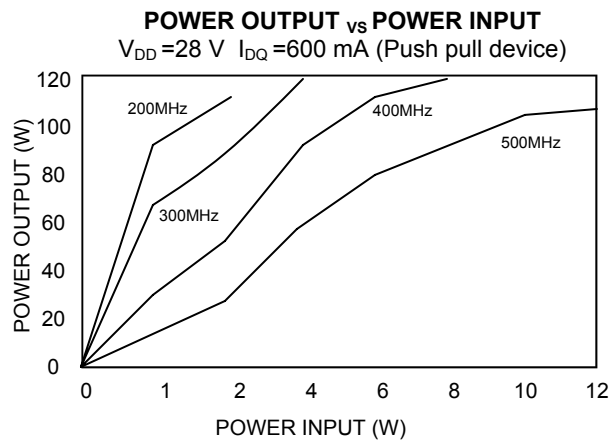
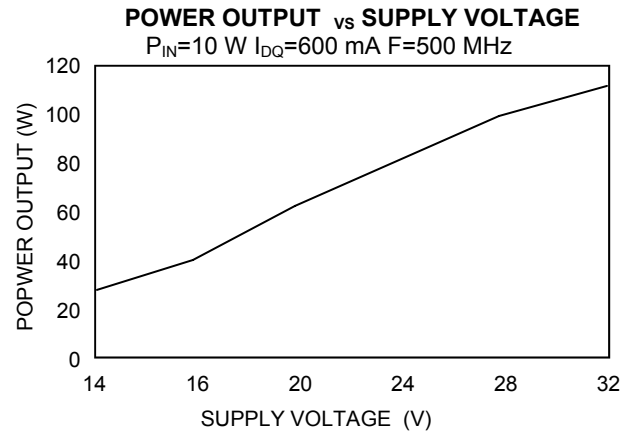
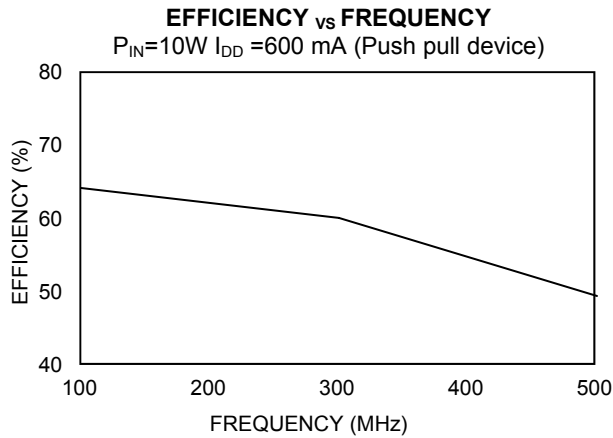
Parameter	Symbol	Min	Max	Units	Test Conditions
Drain-Source Breakdown Voltage	BV_{DSS}	65	-	V	$V_{GS} = 0.0$ V, $I_{DS} = 15.0$ mA
Drain-Source Leakage Current	I_{DSS}	-	3.0	mA	$V_{GS} = 28.0$ V, $V_{DS} = 0.0$ V
Gate-Source Leakage Current	I_{GSS}	-	3.0	μ A	$V_{GS} = 20.0$ V, $V_{DS} = 0.0$ V
Gate Threshold Voltage	$V_{GS(TH)}$	2.0	6.0	V	$V_{DS} = 10.0$ V, $I_{DS} = 300.0$ mA
Forward Transconductance	G_M	1.5	-	S	$V_{DS} = 10.0$ V, $I_{DS} = 3000.0$ mA, $\Delta V_{GS} = 1.0$ V, 80 μ s Pulse
Input Capacitance	C_{ISS}	-	135	pF	$V_{DS} = 28.0$ V, $F = 1.0$ MHz
Output Capacitance	C_{OSS}	-	90	pF	$V_{DS} = 28.0$ V, $F = 1.0$ MHz
Reverse Capacitance	C_{RSS}	-	24	pF	$V_{DS} = 28.0$ V, $F = 1.0$ MHz
Power Gain	G_P	10	-	dB	$V_{DD} = 28.0$ V, $I_{DQ} = 600.0$ mA, $P_{OUT} = 100.0$ W F =500 MHz
Drain Efficiency	η_D	50	-	%	$V_{DD} = 28.0$ V, $I_{DQ} = 600.0$ mA, $P_{OUT} = 100.0$ W F =500 MHz
Return Loss	R_L	10	-	dB	$V_{DD} = 28.0$ V, $I_{DQ} = 600.0$ mA, $P_{OUT} = 100.0$ W F =500 MHz
Load Mismatch Tolerance	VSWR-T	-	30:1	-	$V_{DD} = 28.0$ V, $I_{DQ} = 600.0$ mA, $P_{OUT} = 100.0$ W F =500 MHz

*Per side

PACKAGE OUTLINE



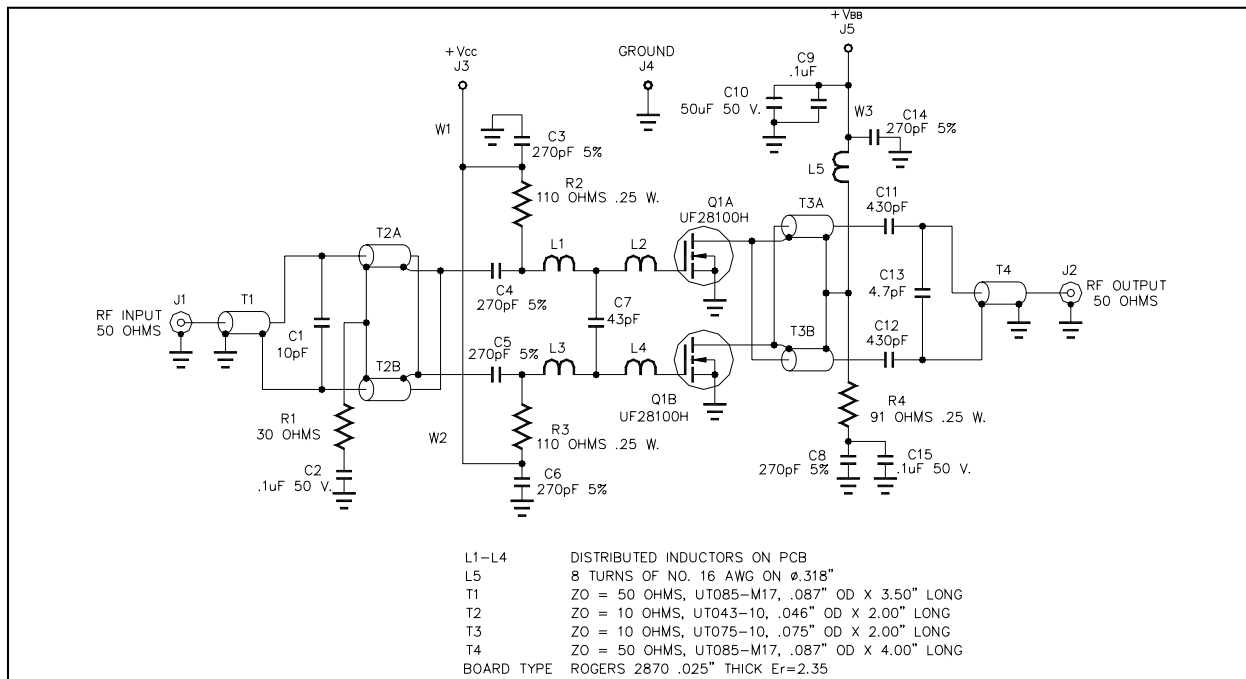
Typical Broadband Performance Curves



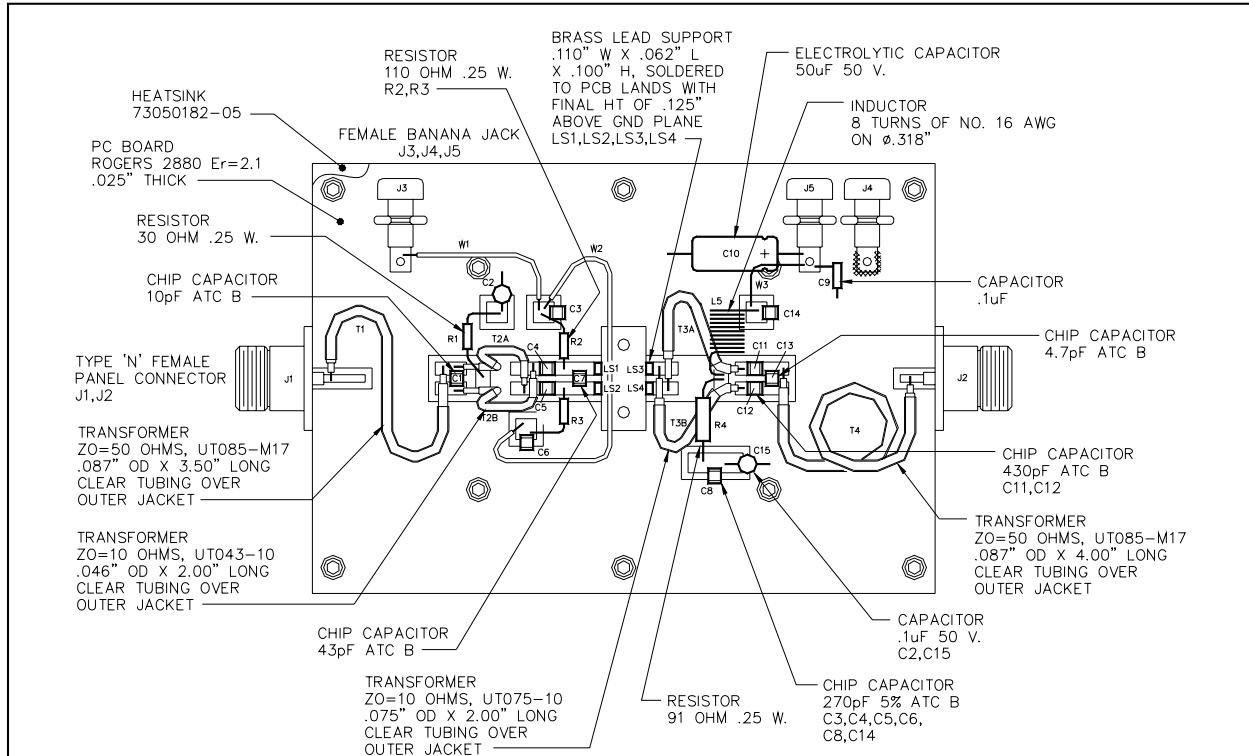
RF Power MOSFET Transistor 100W, 100-500 MHz, 28V

M/A-COM Products
Released - Ver 08.07

TEST FIXTURE SCHEMATIC



TEST FIXTURE ASSEMBLY



ADVANCED: Data Sheets contain information regarding a product M/A-COM Technology Solutions is considering for development. Performance is based on target specifications, simulated results, and/or prototype measurements. Commitment to develop is not guaranteed.

PRELIMINARY: Data Sheets contain information regarding a product M/A-COM Technology Solutions has under development. Performance is based on engineering tests. Specifications are typical. Mechanical outline has been fixed. Engineering samples and/or test data may be available. Commitment to produce in volume is not guaranteed.

- **North America** Tel: 800.366.2266 / Fax: 978.366.2266
- **Europe** Tel: 44.1908.574.200 / Fax: 44.1908.574.300
- **Asia/Pacific** Tel: 81.44.844.8296 / Fax: 81.44.844.8298

Visit www.macomtech.com for additional data sheets and product information.

M/A-COM Technology Solutions Inc. and its affiliates reserve the right to make changes to the product(s) or information contained herein without notice.

AMEYA360

Components Supply Platform

Authorized Distribution Brand :



Website :

Welcome to visit www.ameya360.com

Contact Us :

➤ Address :

401 Building No.5, JiuGe Business Center, Lane 2301, Yishan Rd
Minhang District, Shanghai , China

➤ Sales :

Direct +86 (21) 6401-6692

Email amall@ameya360.com

QQ 800077892

Skype ameyasales1 ameyasales2

➤ Customer Service :

Email service@ameya360.com

➤ Partnership :

Tel +86 (21) 64016692-8333

Email mkt@ameya360.com