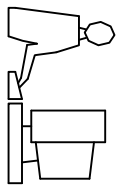
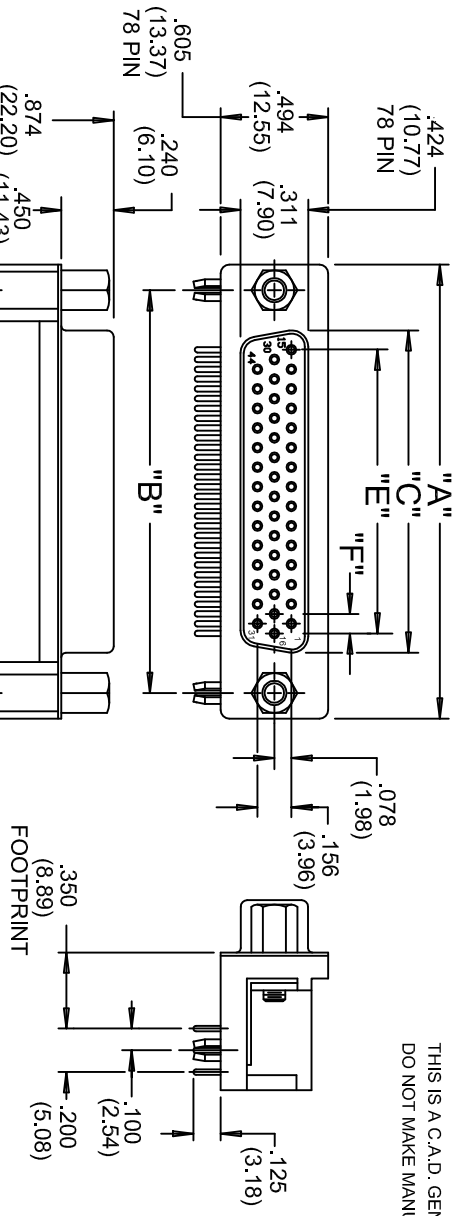


THIS IS A C.A.D. GENERATED DRAWING
DO NOT MAKE MANUAL REVISIONS TO MASTER.

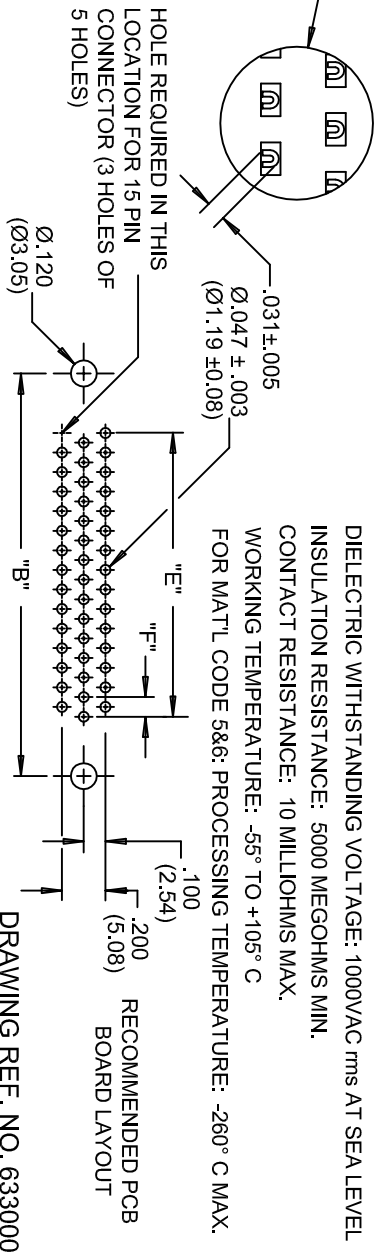


ISSUE NUMBER
ADD PCB LAYOUT
R.STAMONICA MAY 24/2011
(12)



MATERIALS:
 INSULATOR: THERMOPLASTIC POLYESTER, UL94V-0
 CHEMICAL RESISTANCE, COLOR BLACK
 SHELL: STEEL, NICKEL PLATED
 CONTACT: SEE ORDERING CODE
 GOLD FLASH (CONTACT CODE 263)
 10 MICRONS GOLD (CONTACT CODE 563)
 30 MICRONS GOLD (CONTACT CODE 663)
 TIN PLATING ON TAIL ENDS

ELECTRICAL:
 CURRENT RATING: 3 AMPERES
 DIELECTRIC WITHSTANDING VOLTAGE: 1000VAC rms AT SEA LEVEL
 INSULATION RESISTANCE: 5000 MEGOHMS MIN.
 CONTACT RESISTANCE: 10 MILLIOHMS MAX.
 WORKING TEMPERATURE: -55° TO +105° C
 FOR MATL CODE 5&6: PROCESSING TEMPERATURE: -260° C MAX.



DRAWING REF. NO. 633000

ORDERING CODE

- SERIES **634-015-563-042**
- NUMBER OF CONTACTS _____
- CONTACT FINISH CODE _____
- CONNECTOR CODE _____
- 63- STANDARD CONTACTS, BLACK INSULATOR
 73- 9TH PIN RECESSED .050(3.05) BLACK INSULATOR
 74- 9TH PIN RECESSED .050(3.05) BLUE INSULATOR
- CONNECTOR MATERIAL CODE: _____
- 0- PHOSPHOR BRONZE
 1- BRASS
 5- PHOSPHOR BRONZE, HIGH TEMP INSULATOR
 6- BRASS, HIGH TEMP INSULATOR
- GROUNDING FEATURE _____
- 1- 120(3.05) DIA. THROUGH HOLE TOP GROUND
 2- 120(3.05) DIA. THROUGH HOLE BOTTOM GROUND
 3- TWO PRONG BOARDLOCKS FOR .120(3.05)DIA.HOLE
 4- FOUR PRONG BOARDLOCKS FOR .120(3.05)DIA.HOLE
- MOUNTING OPTIONAL _____
- 0- FIXED ROUND STANDOFF WITH THREADED INSERT
 1- .125" DIA. THROUGH HOLE
 2- 4-40 UNC THREADED INSERT
 3- 4-40 UNC THREADED HEX STANDOFF

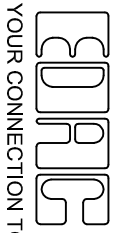
NUMBER OF CONTACTS	"A" Inch (mm)	"B" Inch (mm)	"C" Inch (mm)	"E" Inch (mm)	"F" Inch (mm)
15	1.214 (30.84)	.984 (24.99)	.642 (16.30)	.405 (10.29)	.090 (2.29)
26	1.545 (39.24)	1.312 (33.32)	.971 (24.66)	.765 (19.43)	.090 (2.29)
44	2.088 (53.04)	1.852 (47.04)	1.511 (38.38)	1.305 (33.15)	.090 (2.29)
62	2.730 (69.34)	2.500 (63.50)	2.159 (54.84)	1.948 (49.47)	.095 (2.41)
78	2.635 (66.93)	2.406 (61.11)	2.064 (52.42)	1.805 (45.85)	.095 (2.41)

634 SERIES HIGH DENSITY SUBMINIATURE D CONNECTOR RECEPTACLE(SOCKET) RIGHT ANGLE .350(8.89) FOOTPRINT

DRAWN: F.BRIONES DATE: NOV. 26/97
 CHECKED: DATE:



THIS SERIES FULLY CONFORMS TO THE EUROPEAN UNION DIRECTIVES 2002/95/EC AND 2002/96/EC FOR ROHS COMPLIANCY.



EDAC INC
 TORONTO, ONTARIO
 CANADA

THESE DRAWINGS AND SPECIFICATIONS ARE THE PROPERTY OF EDAC INC. AND SHALL NOT BE REPRODUCED OR COPIED OR USED AS THE BASIS FOR THE MANUFACTURE OR SALE OF APPARATUS WITHOUT WRITTEN PERMISSION.

SEE ORDERING CODE
 DRAWING NUMBER **634-000-001**
 ISSUE 12

AMEYA360

Components Supply Platform

Authorized Distribution Brand :



Website :

Welcome to visit www.ameya360.com

Contact Us :

➤ Address :

401 Building No.5, JiuGe Business Center, Lane 2301, Yishan Rd
Minhang District, Shanghai , China

➤ Sales :

Direct +86 (21) 6401-6692

Email amall@ameya360.com

QQ 800077892

Skype [ameyasales1](#) [ameyasales2](#)

➤ Customer Service :

Email service@ameya360.com

➤ Partnership :

Tel +86 (21) 64016692-8333

Email mkt@ameya360.com