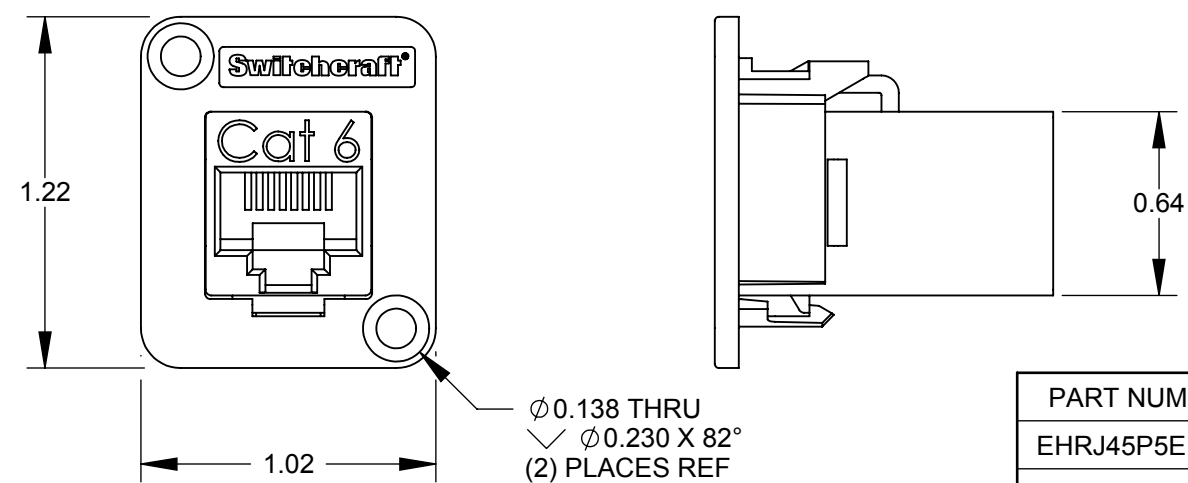
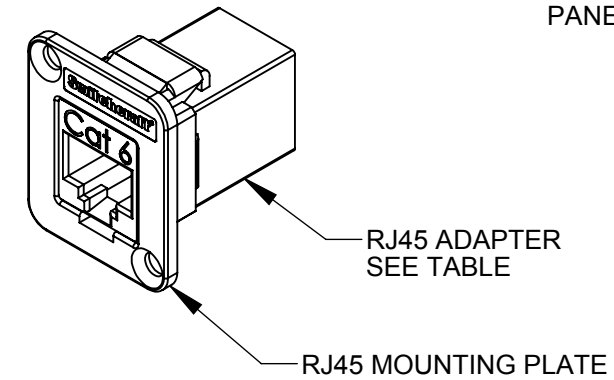
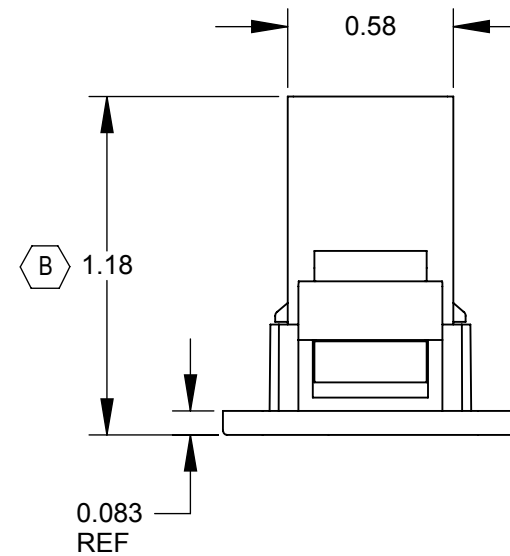


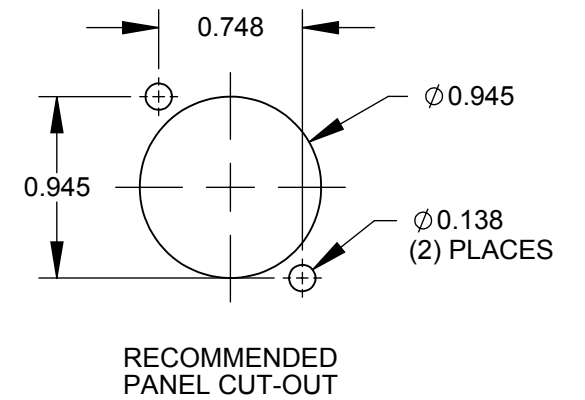
SHIELDED VERSIONS
EHRJ45P5ES
SHOWN

NOTES:

1. ADAPTER MEETS:
CAT5e: TIA/EIA-568-B.2 STANDARD
CAT6: TIA/EIA-568-B.2-1 STANDARD
2. MATERIALS:
RJ45 MOUNTING PLATE - THERMOPLASTIC, BLACK
RJ45 HOUSING - THERMOPLASTIC, BLACK
RJ45 SHIELD - COPPER ALLOY, NICKEL PLATED
3. FOR SCREWS TO BE SHIPPED WITH ASSEMBLY,
ADD SUFFIX -PKG TO PART NUMBER.
4. WHEN MOUNTING ASSEMBLY, USE A SCREW
TORQUE OF 10 INCH-LBS MAXIMUM.
5. THIS PRODUCT IS RoHS COMPLIANT.



UNSHIELDED VERSIONS
EHRJ45P6
SHOWN



PART NUMBER	RJ45 ADAPTER
EHRJ45P5E	CAT5e UNSHIELDED
EHRJ45P5ES	CAT5e SHIELDED
EHRJ45P6	CAT6 UNSHIELDED
EHRJ45P6S	CAT6 SHIELDED

CUSTOMER DRAWING

					<div>UNLESS OTHERWISE SPECIFIED</div> <div>1. ALL DIMENSIONS IN INCHES</div> <div>- TWO PLACE DECIMALS ±0.02</div> <div>- THREE PLACE DECIMALS ±0.005</div>	THIS DRAWING DESCRIBES A DESIGN CONSIDERED PROPRIETARY IN NATURE, DEVELOPED AND MANUFACTURED BY SWITCHCRAFT INC. AND IS RELEASED ON A CONFIDENTIAL BASIS FOR IDENTIFICATION PURPOSES ONLY.										
						SIZE	WIDTH		MULT		LBS/M		TEMPER			
						FINISH SPEC No.					MATERIAL SPEC No.					
						FIRST USED ON				SCALE 1.5:1		<div>Switchcraft®</div>				
						DATE DRAWN	BY	CHKD		APVD						
B	27247	1/21/14	JGK	TJK		7/7/08	JGK	RS 7/28/09		TJK 10/24/09						
A	26387	5/15/09	RS	TJK								SHEET 1 OF 1				
REV	ECO NUMBER	DATE	BY	APVD		NAME					PART No.					REV
REVISIONS					DO NOT SCALE DRAWING	EH SERIES RJ45, RoHS					EHRJ45P SERIES					B

Authorized Distribution Brand :



Website :

Welcome to visit www.ameya360.com

Contact Us :

➤ Address :

401 Building No.5, JiuGe Business Center, Lane 2301, Yishan Rd
Minhang District, Shanghai , China

➤ Sales :

Direct +86 (21) 6401-6692

Email amall@ameya360.com

QQ 800077892

Skype ameyasales1 ameyasales2

➤ Customer Service :

Email service@ameya360.com

➤ Partnership :

Tel +86 (21) 64016692-8333

Email mkt@ameya360.com