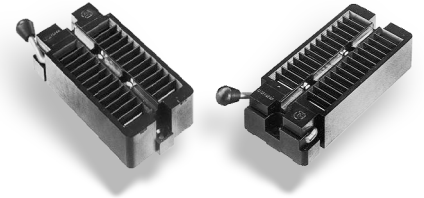




Series 55 Universal Zero-Insertion-Force DIP Test Socket

FEATURES

- Accepts Devices on 0.300 to 0.600 [7.62 to 15.24] Centers
- All Pin Count Sockets go into PCB with either 0.300 or 0.600 [7.62 or 15.24] Centers
- Contacts Normally-closed to Eliminate Dependence on Plastic to Sustain Contact Integrity
- Socket Handle Configured with Closed Contacts (on) when in the Up or Down Position, and Mounted on the Right- or Left-hand Side
- Sockets may be Soldered into PCBs or Plugged into Any Socket or Receptacle



GENERAL SPECIFICATIONS

- **SOCKET BODY:** Black UL 94V-0 glass-filled Polyphenylene Sulfide (PPS)
- **HANDLE:** Stainless Steel
- **HANDLE KNOB:** Brass 360, 1/2-hard
- **CONTACTS:** BeCu 172 per QQ-C-533 **-OR-** Spinodal Alloy
- **CONTACT PLATING:** 50μ [1.27μ] min. Ni under-plate per QQ-N-290, over-plated with either 200μ [5.08μ] min. matte Sn per ASTM B545-97 **-OR-** 50μ [1.27μ] NiB
- **CONTACT CURRENT RATING:** 1 amp
- **INSULATION RESISTANCE:** 1000 MΩ min.
- **DIELECTRIC WITHSTANDING VOLTAGE:** 1000 VAC
- **LIFE CYCLE:** 25,000 to 50,000 cycles
- **OPERATING TEMPERATURE:** 221°F [105°C] Sn plating; 302°F [150°C] Au plating; 392°F [200°C] NiB plating
- **RETENTION FORCE (closed):** 55g/pin based on a 0.020 [0.51] dia. test lead
- **ACCEPTS LEADS:** 0.015-0.045 [0.38-1.14] wide, 0.110-0.280 [2.79-7.11] long

MOUNTING CONSIDERATIONS

- See Socket Footprint

ORDERING INFORMATION

XX-X55X-X X

Plating

- 0 = Sn over Ni
- 0TL = Sn/Pb over Ni
- 1 = Au over Ni
- 6 = NiB (Spinodal only)

Termination

- 1 = Solder Pin Tail

Handle Options

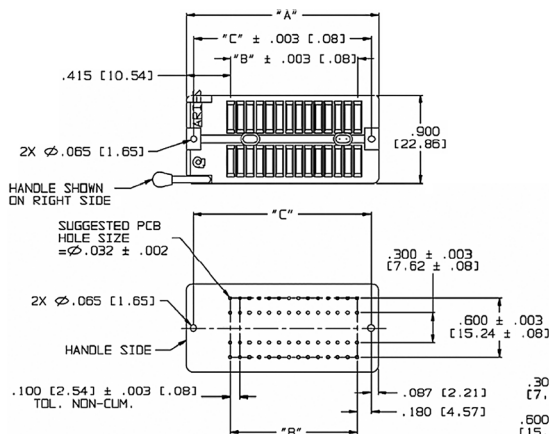
- 1 = Left up is closed
- 2 = Right up is closed
- 3 = Left down is closed
- 4 = Right down is closed (std)

Row-to-Row Spacing (btm)

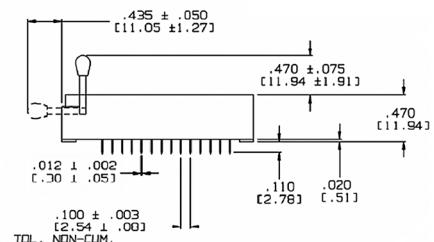
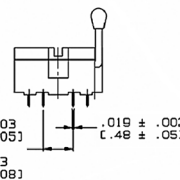
- 3 = 0.300 [7.62]
- 6 = 0.600 [15.24]

No. of Pins

- 24, 28, 32, 36, 40, 42, 44, 48



$$\begin{aligned} \text{"A"} &= (\text{NO. OF PINS PER ROW} \times 0.100 [2.54]) + 0.590 [14.99] \\ \text{"B"} &= (\text{NO. OF PINS PER ROW} - 1) \times 0.100 [2.54] \\ \text{"C"} &= (\text{NO. OF PINS PER ROW} \times 0.100 [2.54]) + 0.415 [10.54] \end{aligned}$$



ALL DIMENSIONS: INCHES [MILLIMETERS]

ALL TOLERANCES: ±0.005 [0.13] UNLESS OTHERWISE SPECIFIED

FOR TEST SOCKET RECEPTACLES, SEE [DATA SHEET 10003](#)

DO NOT USE THIS SOCKET IN A BURN-IN OVEN WITH CONTACTS IN OPEN POSITION, AS IT WILL DAMAGE THE SOCKET

CONSULT FACTORY FOR OTHER SIZES AND CONFIGURATIONS

CUSTOMIZATION: ARIES SPECIALIZES IN CUSTOM DESIGN AND PRODUCTION. SPECIAL MATERIALS, PLATINGS, SIZES, AND CONFIGURATIONS CAN BE FURNISHED, DEPENDING ON QUANTITY.

ARIES RESERVES THE RIGHT TO CHANGE PRODUCT GENERAL SPECIFICATIONS WITHOUT NOTICE

PRINTOUTS OF THIS DOCUMENT MAY BE OUT-OF-DATE AND SHOULD BE CONSIDERED UNCONTROLLED



ARIES
ELECTRONICS, INC.

2609 Bartram Road • Bristol, PA 19007-6810 USA

TEL 215-781-9956 • FAX 215-781-9845

WWW.ARIESELEC.COM • INFO@ARIESELEC.COM



10001
Rev. 1.7
1 of 1

AMEYA360

Components Supply Platform

Authorized Distribution Brand :



Website :

Welcome to visit www.ameya360.com

Contact Us :

➤ Address :

401 Building No.5, JiuGe Business Center, Lane 2301, Yishan Rd
Minhang District, Shanghai , China

➤ Sales :

Direct +86 (21) 6401-6692

Email amall@ameya360.com

QQ 800077892

Skype ameyasales1 ameyasales2

➤ Customer Service :

Email service@ameya360.com

➤ Partnership :

Tel +86 (21) 64016692-8333

Email mkt@ameya360.com