

# Ground Blocks

Use ground blocks instead of grounding studs and wire lugs to terminate ground wires, saving installation and wiring time.

Ground blocks clamp mechanically onto the DIN Rail by tightening the center mounting screw, making a reliable electrical connection between the cage clamp terminals and the DIN Rail. The rail serves as a busbar and automatically distributes ground potential to all other ground terminals on the same rail.

Ground blocks can also be used as end stops, preventing other terminal blocks and components from moving laterally on the DIN Rail.

They are supplied with a standard green/yellow housing for easy identification and accept standard marking tags.

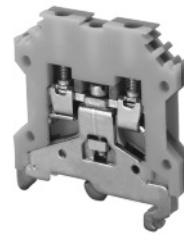
CGT4U, CGT10U and CGT35U can be mounted on both DIN 32mm and DIN 35mm rails.

CGT4N, CGT6N and CGT16N can be mounted on 35mm DIN rail and have the same top outer profile as the feed through blocks (CTS4U-N, CTS2.5U-N, CTS6U, CTS10U and CTS16U).

- High density
- Screw-cage clamp
- Special clamping foot
- Polyamide 6.6
- Color: green/yellow



CGT4U



CGT4N



Terminal Width	6 mm	6 mm
Height x Length	48 x 43 mm	45.4 x 54.2 mm
Stripping Length	9 mm	9 mm
Insulation Material	Polyamide 6.6	Polyamide 6.6
Type of Connection	2 screw clamps	2 screw clamps
Approvals		
Wire Range	22-10 AWG 0.5-4 sq.mm	22-10 AWG 0.5-4 sq.mm
Torque	7 lb-in 0.5 Nm	7 lb-in 0.8 Nm

Other Approvals



AEx ell  
Ex ell



### Terminal Block

DIN Rail for ordering information refer to page 72

End Plate

Marking Tags (MT Type)

Cat. No.	Std. Pk.
----------	----------

CGT4U

50



EPCGT4U

100

MT6

100

Cat. No.	Std. Pk.
----------	----------

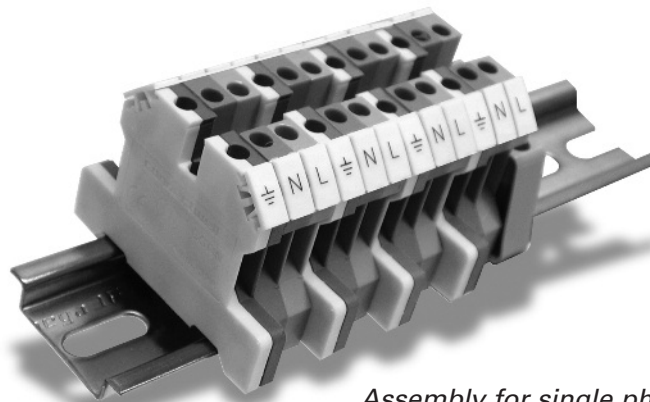
CGT4N

50



MT6

100



Assembly for single phase 3 wire circuits.

# AMEYA360

## Components Supply Platform

Authorized Distribution Brand :



Website :

Welcome to visit [www.ameya360.com](http://www.ameya360.com)

Contact Us :

➤ Address :

401 Building No.5, JiuGe Business Center, Lane 2301, Yishan Rd  
Minhang District, Shanghai , China

➤ Sales :

Direct +86 (21) 6401-6692

Email [amall@ameya360.com](mailto:amall@ameya360.com)

QQ 800077892

Skype [ameyasales1](#) [ameyasales2](#)

➤ Customer Service :

Email [service@ameya360.com](mailto:service@ameya360.com)

➤ Partnership :

Tel +86 (21) 64016692-8333

Email [mkt@ameya360.com](mailto:mkt@ameya360.com)