

CME2425-6

Description:

Highly dependable Triad common mode EMI suppression inductors are used in various types of power supplies to eliminate noise common to all lines. These units also provide effective differential mode filtering. Meeting VDE, IEC, UL and CSA requirements, they minimize AC line transmitted interference often created by high frequency switching power supplies.

Construction:

Constructed with UL rated 130°C materials.

Electrical Specifications (@20°C):

Min. Inductance*	Amps RMS	Max. DC (Ω) Resistance	Min. Leakage
16.0 mH	.80	.500	90.0 μH

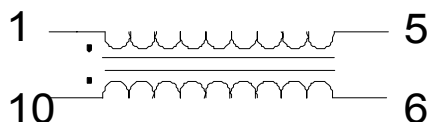
*inductance per winding.

Dimensions:

A	B	C	D
1.050	1.075	0.092-0.187	1.050

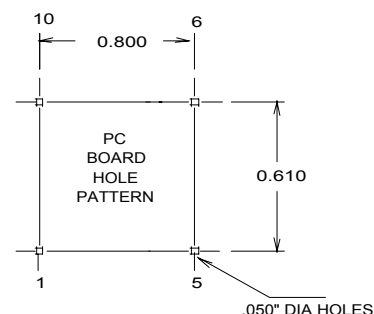
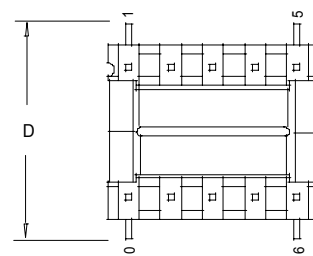
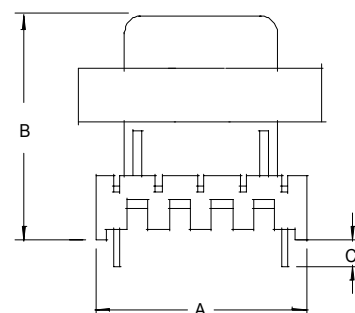
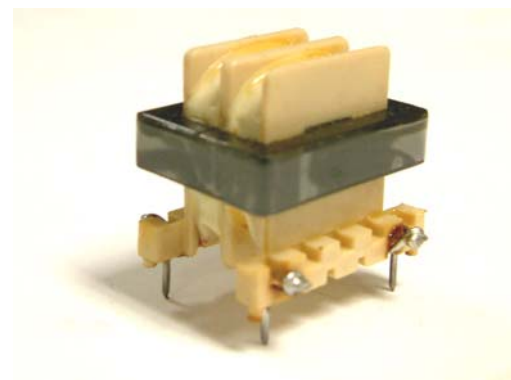
- Note: 1. Pin diameter: 0.029 SQ.
 2. Units in inches.
 3. Rated current yields approximately 40°C temperature rise.
 4. Weight: .154 lbs.

Schematic:



RoHS Compliance: As of manufacturing date February 2005, all standard products meet the requirements of 2002/95/EC, known as the RoHS initiative.

* Upon printing, this document is considered "uncontrolled". Please contact Triad Magnetics' website for the most current version.



AMEYA360

Components Supply Platform

Authorized Distribution Brand :



Website :

Welcome to visit www.ameya360.com

Contact Us :

➤ Address :

401 Building No.5, JiuGe Business Center, Lane 2301, Yishan Rd
Minhang District, Shanghai , China

➤ Sales :

Direct +86 (21) 6401-6692

Email amall@ameya360.com

QQ 800077892

Skype ameyasales1 ameyasales2

➤ Customer Service :

Email service@ameya360.com

➤ Partnership :

Tel +86 (21) 64016692-8333

Email mkt@ameya360.com